



RE/MAX EXPERIENCE COMPETENCE! PERFORMANCE!

SERVING MARKHAM / UNIONVILLE, STOUFFVILLE, UXBRIDGE AND SURROUNDING AREAS

COSTAIN SILVER MAPLE
Super 4 br. very spacious master suite, greenhouse kitchen, fenced landscaped, excellent location. \$155,900.

COUNTRY ESTATE
5 minutes north of Claremont. Scenic 44 acres spring fed pond, 2 barns, fields, 2 deeds, charming comfortable home. 18 x 30 family room, beamed ceilings, fireplace wall. 4 + 2 bedrooms. \$278,500. Call Shirley Kortschof 477-5500 or 294-4574. Re/max Markville Realty Ltd.



STOUFFVILLE NORTH
Tastefully decorated. Kit. with walkout to deck, main floor family rm, fireplace, finished rec. rm., 3 baths, \$144,900. Mary Jean Sider, 640-4960. Re/max Executive Realty Inc. Rltr.



MARKHAM NORTH
1.6 ac. bright kit. with plenty of pine cupboards, main floor fm. rm. with stone fireplace, many extras. \$239,000. Mary Jean Sider 640-4960. Re/max Executive Realty Inc. Rltr.



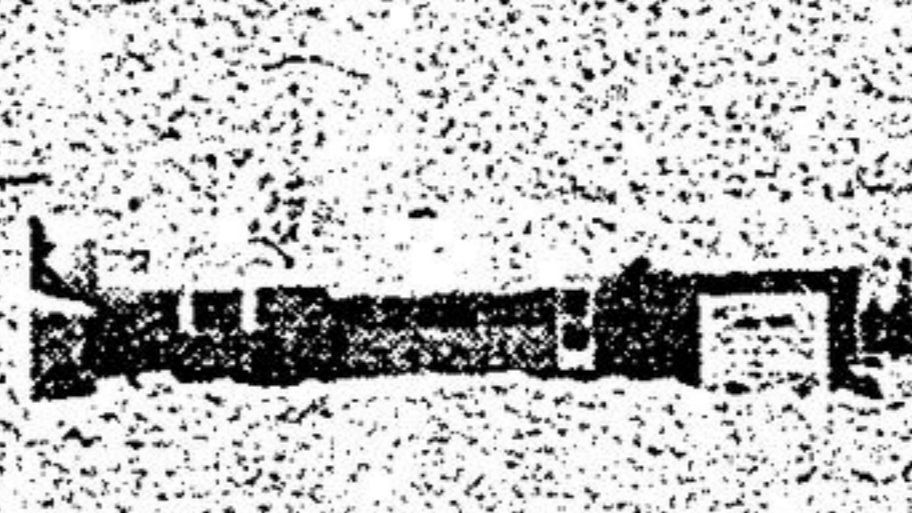
WHAT AN OPPORTUNITY!
Potential unlimited. Solid century home. Many possibilities. Main St. commercial potential. Huge lot. Bob Newman 294-5817, 640-4960. Re/max Executive Realty Inc. Rltr.



TWO FAMILY HOME!
Five bedrooms, large warm family room with crackling fireplace, walkout basement, good financing available. Bob Newman 294-5817, 640-4960. Re/max Executive Realty Inc. Rltr.



BEHIND THIS BLUE SPRUCE
Lies one of the nicest sidesplits in Markham - 60x150. Huge private lot with pool, patio and shed. Huge rec. room with fireplace. A beauty for only \$143,900. Call me now. Charles deBourbon, 477-5500. Re/max Markville Realty Ltd., Rltr.



AURORA SIDEROAD
Cozy home! Large lot, 615 ft. deep, bright liv. & din. rm., 2 fireplaces, rec. rm. and plenty of storage area. \$124,900. Mary Jean Sider, 640-4960. Re/max Executive Realty Inc. Rltr.



\$124,500.00
LOCATION - LOCATION
A 3 bedroom bungalow on a 70' wide treed lot. Attached garage, knotty pine rec. rm. Immed. poss. Good Mortgage!! Don't wait! Mary Jane Swanson 477-5500. Re/max Markville Realty Ltd.

MARKHAM/UNIONVILLE
477-5500
REMAX markville realty ltd. rltr.

STOUFFVILLE
640-4960
REMAX executive realty inc. rltr.

UXBRIDGE
640-6755 - 852-6143
REMAX scugog realty limited rltr.



ARTISTS
CONCEPT

MAPLE PARK ESTATES

A mini community located on the west side of Hwy. 48, just 700 feet north of Aurora Sideroad in Ballantrae with easy access to the 404 and with a captivating entrance of hardwood bush.

28 exclusive homes reflecting ageless design, exciting interiors and custom features included only in better built homes. Homes designed with today's lifestyle in mind. Homes that are built to last and to pass on to the next generation. Come and see these innovative plans today - brochures available at our office. Order now for June possession.

SOME CUSTOM FEATURES:

- * 2x6 wall construction
- * All clay brick exterior
- * Quality accessories
- * 200 amp service with circuit breaker panel
- * R-22 wall insulation
- * Approx. 1/4 acre lots with 150' frontage
- * Brick fireplace
- * 3/8" spruce plywood for flooring
- * Wood sectional garage doors
- * R-32 ceiling

TAKE A DRIVE OUT TODAY

WE'VE GOT IT ALL! PRICES, LOCATIONS, QUALITY AND VALUE

8 PLANS TO CHOOSE FROM OR YOUR OWN PLAN

VICTORIAN REPRODUCTION PLAN WITH GINGERBREAD TRIM AVAILABLE

Options are available. Starting at \$144,900.00 for 1775 sq. ft. bungalow with attached double car garage and \$159,900.00 for 2245 sq. ft. 2 storey with attached double car garage. Triple car garage additional \$3,000.00 only. Prices, terms & spec. subject to change without notice.

**STOUFFVILLE REAL ESTATE LTD.,
EXCLUSIVE AGENT**

North-west corner Hwys. 47 & 48, Stouffville

640-1200

649-2266



TONI SULLIVAN

Bob Challenger, Broker of Remax East Realty Ltd. is pleased to announce the addition of Toni Sullivan (Associate Broker) to our professional real estate team. Toni has been very active in the Unionville/Markham area for the last 5 years and she feels that by moving into our office she will be able to add a new dimension to her real estate scope as well as continuing to service her clients in the Unionville/Markham area. Toni can be reached at 291-9988.



MARKVILLE REALTY LTD.
477-5500



**Joyce Ramer Walker
Associate Broker**

I'd like to extend to my many friends a warm and hearty new year - 1986 is going to be a very exciting and challenging year for me following my 13 successful years in Real Estate in Markham. Once again I pledge to serve you with professionalism, confidentiality, integrity and the best my experience can give. Please call me at:

477-5500 or pager 237-8215
or res. 294-7878



REAL ESTATE LTD.
4460 NO. 7
HIGHWAY
UNIONVILLE,
ONT.
477-2223

WANTED!

STOUFFVILLE or BALLANTRAE

We have a family anxious to buy a 4 bedrm. home, preferably with a main floor family room and laundry room. Our client can close quickly and has all cash. Please call Cathi Lee 477-2223 or 887-5177.

GET YOUR LOT NOW BUILD IN SPRING

We have 3 prime, 5 acre building lots in a prestigious area close to Stouffville, 4 mins. to 404. Call Debbi Jefferson 477-2223 or 640-6598.

PRIVATE SALE SUNDERLAND

5 year old brick sidesplit home & shop on 43 acres (1/2 rolling farmland, 1/2 bush), large kitchen, living room with fireplace, 3 bedrooms, 2 bathrooms, family room with wood burning stove, laundry room, 30' x 45' insulated shop, 24' above ground pool. On Hwy. 7, 16 miles north of Port Perry. Asking \$134,000.

Call 705-357-3896