

Economist/Tribune

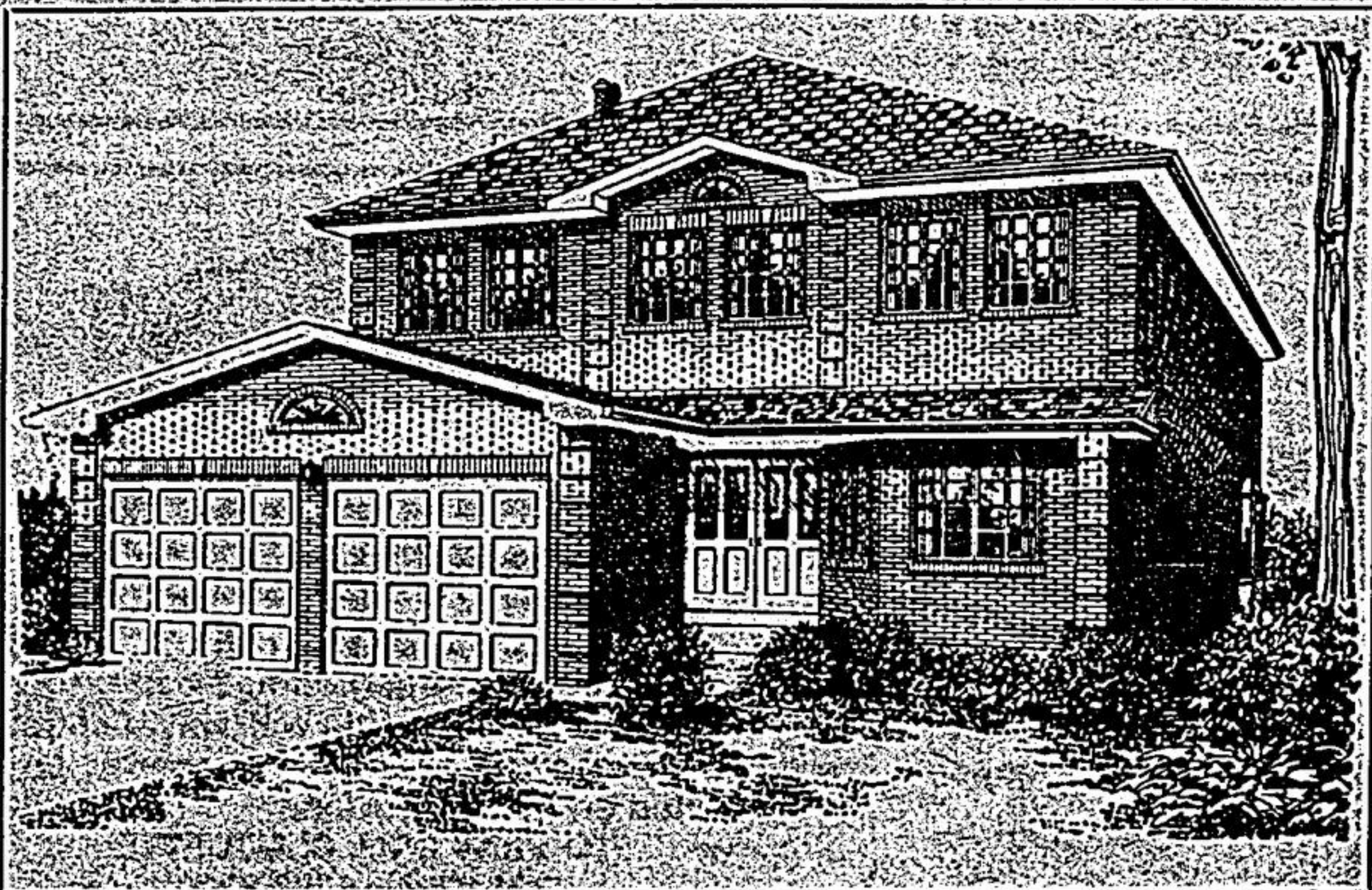
# showcase



## ONLY 4 HOMES LEFT

Maple Lane Lands and Developments Co. Ltd. are offering three large two-storey homes in the north-east area of Markham. The shops, restaurants and entertainment of Main Street, Markham, are only minutes away. Public transportation, churches and schools are conveniently nearby. The homes, located on the south side of 16th Ave., east of Hwy 48, range in price from \$151,800 to \$166,200.

All have four bedrooms with the master bedrooms featuring ensuites with Roman-styled tubs and large walk-in closets. All have spacious family rooms with finished fireplaces and walkouts. The sales office is open noon to 6 p.m. Saturday and Sunday and from 1 to 8 p.m. Monday through Thursday. For more information call Allan Brown at 294-9072.



THE SCARLETT MAPLE (top right), the Silver Maple (left) and the Sugar Maple (right) are being offered in Markham by Maple Lane Lands and Developments Co. Ltd. Prices range from \$151,800 to \$166,200.

**MAPLE LANE LANDS & DEVELOPMENT CO. LTD.**

**SCARLETT MAPLE**

**SUGAR MAPLE**

**MAPLE LANE STANDARD FEATURES**

- Ceramic tile floors in entry & powder rooms.
- Tongue and groove, plywood subfloors.
- Direct entrance into house from garage.
- Traditional or European furniture-finish cupboards & vanities.
- Glass clad sheathing.
- Ceramic tile and wonderboard up to ceiling in bath & shower enclosures.
- Gas furnace & forced air ducts sized for air conditioning.
- Double glazed casement windows.
- Mirrors in all bathrooms, medicine cabinet in ensuite.
- Higher than standard insulation.
- Wood sectional garage doors.
- Colonial or Mahogany interior trim.
- Central vacuum and intercom rough-in.
- Door chime and smoke detector.
- Circular stairs & Oak railings.
- Basement bathroom and fireplace rough-in.
- Metal clad, insulated double entrance doors.
- Oval Roman Tub in ensuite.
- 2 exterior water-taps and power outlets.
- All brick construction.
- Aluminum eaves, soffit and fascia.

**SITE: 294-9072**  
**HEAD OFFICE: 477-1706**  
**AFTER HOURS: 475-3583**

All dimensions & specifications are approximate and are subject to change without prior notice.