



(Toronto Direct) 640-4151
(Mt. Albert) 473-3600

Farquharson REALTY LIMITED **realtor**

114 Main Street West, Stouffville, Ontario L0H 1L0
"SERVING OUR COMMUNITY SINCE 1956"



STOUFFVILLE NORTH - WON'T LAST!

Aluminum 3 bdrm. bungalow, family rm. with woodstove, garage, on 100 x 90' fenced lot. Just listed \$63,900. Jim Payne 640-4151.

\$7,000 DOWN STOUFFVILLE NORTH

Country bungalow, 2 decks, full block basement, huge 50' x 125' lot. Why rent when you can buy for \$61,900. Jim Payne 640-4151.

UXBRIDGE AREA FARMS

100 Acres — dairy farm with century brick home — \$250,000. 50 Acres — horse farm with beautiful home \$209,900. 100 Acres — 1865 brick home — \$189,900. Call Ruth Dick 852-3592.



COUNTRY BUNGALOW - \$89,900.

Stouffville n/w — 3 bdrm. hollywood kitchen, walkout, fireplace. All this and more on 75 x 294' mature treed lot. Shows immaculate & will sell quickly. Just listed. Jim Payne 640-4151.

BUY NOW - BUILD LATER!

Can't afford to buy a home? Buy this large investment building lot. In small village, just north of Uxbridge. Colleen Brown 640-4151.

OPPORTUNITY KNOCKS ONCE!

Stouffville — established bowling business, snack bar. Shows excellent return. Just listed. Colleen Brown 640-4151.



Bring JOY to a Child's Christmas

FOR THE EIGHTH CONSECUTIVE YEAR, FAMILY TRUST IS ORGANIZING A COMMUNITY TOY DRIVE.

LAST YEAR, OUR REPRESENTATIVES COLLECTED OVER SIXTY-THREE HUNDRED GIFTS, WHICH WERE DISTRIBUTED BY LOCAL CHARITABLE ORGANIZATIONS TO MANY GRATEFUL CHILDREN IN OUR SERVICE AREA.

THIS YEAR, WITH YOUR CONTINUING SUPPORT, WE'D LIKE TO HELP EVEN MORE. IF YOU HAVE ITEMS TO DONATE, PLEASE GIVE US A CALL.

MARKHAM 294-1372
UNIONVILLE 477-1270
STOUFFVILLE 640-2082
UXBRIDGE 852-3443

FAMILY TRUST CORPORATION REALTOR

GERRY

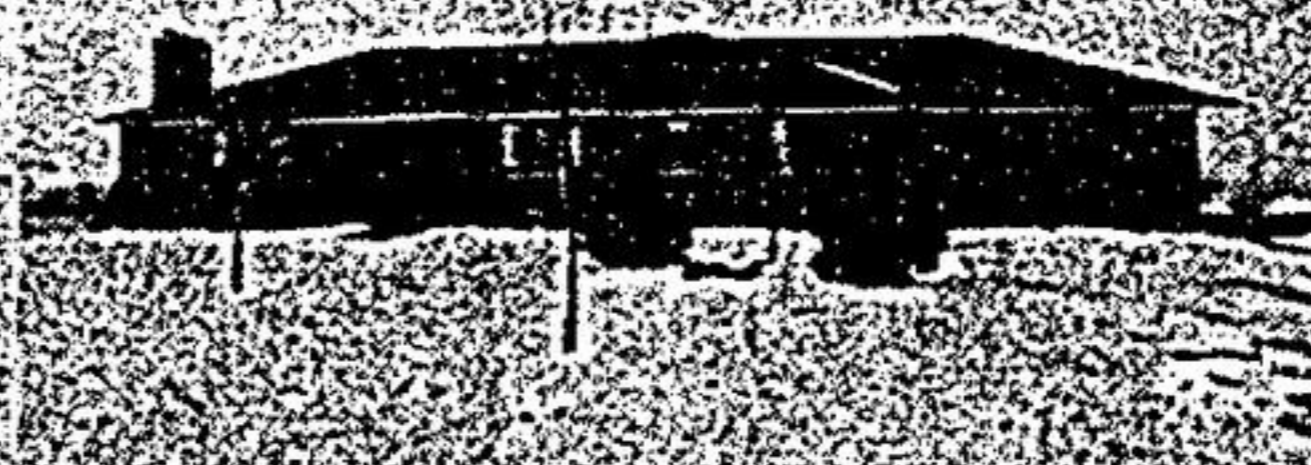
Meharg
LTD
REALTOR

SPECIALIZING IN THE "SMALL TOWN - COUNTRY" LIFESTYLE!

NEW LISTING \$126,000—Beautifully finished 3 br. sidesplit on large country lot southwest of Uxbridge. Large living, eat-in kitchen, fireplace in fam. room, large master with ensuite, walkout from dining. 2 car garage. Close access to paved road for excellent commuting to 404 & Toronto. Call now: Dennis Irwin. Off. 640-2600. Res. 852-5009.

GOODWOOD — 10 ACRES—3 bedroom bungalow on paved road. Mature hardwood setting, inground heated pool. Brick fireplace in large living with walkout. Asking \$159,000. Call Dennis Irwin. Off. 640-2600. Res. 852-5009.

REDUCED TO \$144,900—9.8 Acres with bungalow south of Uxbridge in prestige area. Brick, 3 brs., very large master, living has fireplace, rec room — pine wainscoting. Secluded in pine forest. 2 fenced dog runs, barn for horses & 3 fenced paddocks. Call Dennis Irwin. Off. 640-2600. Res. 852-5009.

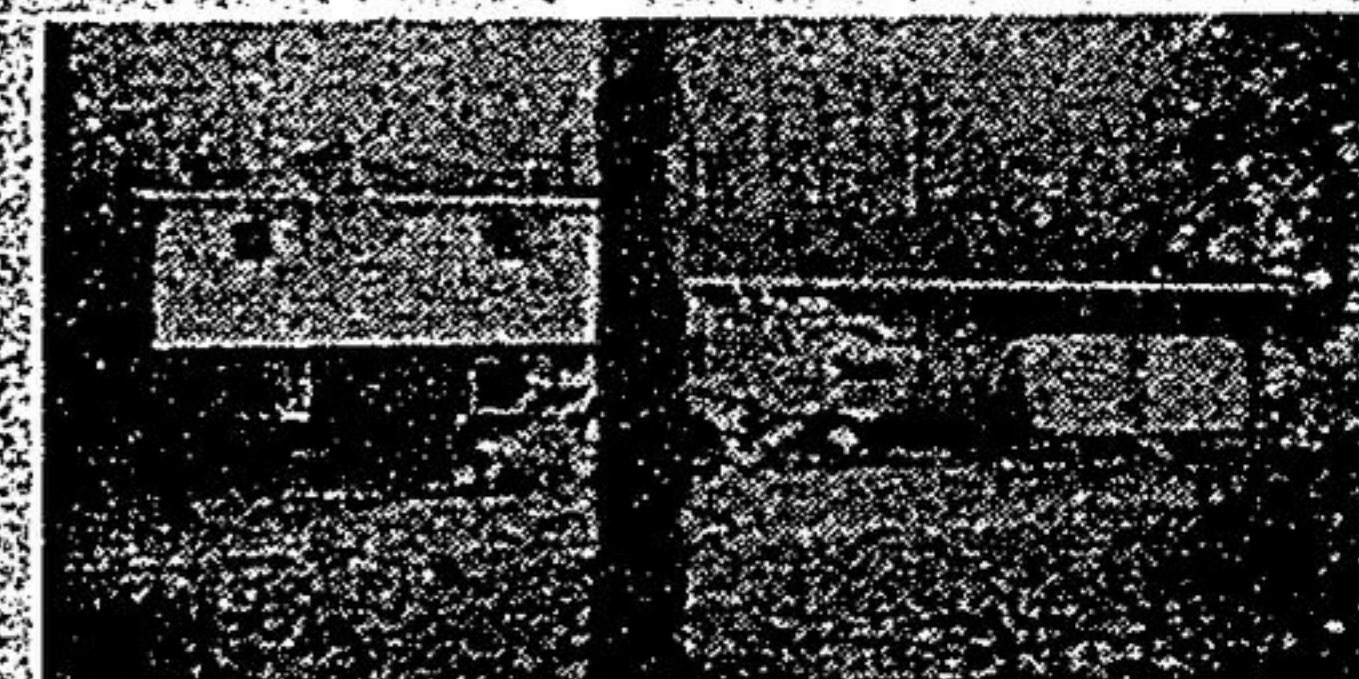


PANORAMIC VIEW — 2 1/2 ACRES—Overlooking Town of Uxbridge on one side, with view of rolling hills & city lights on the other. Ranch bungalow — 4 brs., large fam. rm. with fireplace, billiard table & walkout. All this for only \$189,900. To view call Joanne Kay. Off. 640-3131. Res. 640-1942.



NEW LISTING \$135,000—Uxbridge West — Large pool sized lot - fenced - walkout to patio. Immaculate quality built 3 br., 3 bath home. Eat-in kitchen, large fam. rm. with fireplace. Lovely landscaped setting. To view call Joanne Kay. Off. 640-3131. Res. 640-1942.

1.5 ACRES - \$139,900—Picturesque setting east of Stouffville. Large split level brick home features 10 rooms; 4 br.; large living/dining den, fam. rm. with fireplace, utility room, laundry, walkout to rock garden, fruit trees. 20 x 14' shed. Must be seen. Call Brian Meharg. Off. 640-3131. Res. 640-5000.



HARDWOOD SETTING — 10 ACRES—Spacious custom built split-level features large principal rooms, 3 + 1 bedrooms, walkouts from kitchen, master bedroom & family room. Desirable South Uxbridge location. Asking \$159,000. Call Lee Welton. Off. 640-2600. Res. 640-2770.



MAPLE PARK ESTATES

A mini community located on the west side of Hwy. 48, just 700 feet north of Aurora Sideroad in Ballantrae with easy access to the 404 and with a captivating entrance of hardwood bush. 28 exclusive homes reflecting ageless design, exciting interiors and custom features included only in better built homes. Homes designed with today's lifestyle in mind. Homes that are built to last and to pass on to the next generation. Come and see these innovative plans today - brochures available at our office.

SOME CUSTOM FEATURES

- 2x6 wall construction
- All clay brick exterior
- Quality accessories
- 200 amp service with circuit breaker panel
- R-22 wall insulation
- Approx. 3/4 acre lots with 150' frontage
- Brick fireplace
- 5/8" spruce plywood for flooring
- Forced air electric heat
- R-32 ceiling

TAKE A DRIVE OUT TODAY
WE'VE GOT IT ALL! PRICES, LOCATION, QUALITY AND VALUE
8 PLANS TO CHOOSE FROM OR YOUR OWN PLAN

VICTORIAN REPRODUCTION PLAN WITH GINGERBREAD TRIM AVAILABLE

Options are available. Starting at \$144,900.00 for 1775 sq. ft. bungalow with attached double car garage and \$159,900.00 for 2245 sq. ft. 2 storey with attached double car garage. Triple car garage additional \$2,500.00 only. Prices, terms & spec. subject to change without notice.

**STOUFFVILLE REAL ESTATE LTD.,
EXCLUSIVE AGENT**

North-west corner Hwys. 47 & 48, Stouffville
640-1200 649-2266

