

Economist/Tribune showcase



ONLY 5 HOMES LEFT

Maple Lane Lands and Developments Co. Ltd. are offering three large two-storey homes in the north-east area of Markham.

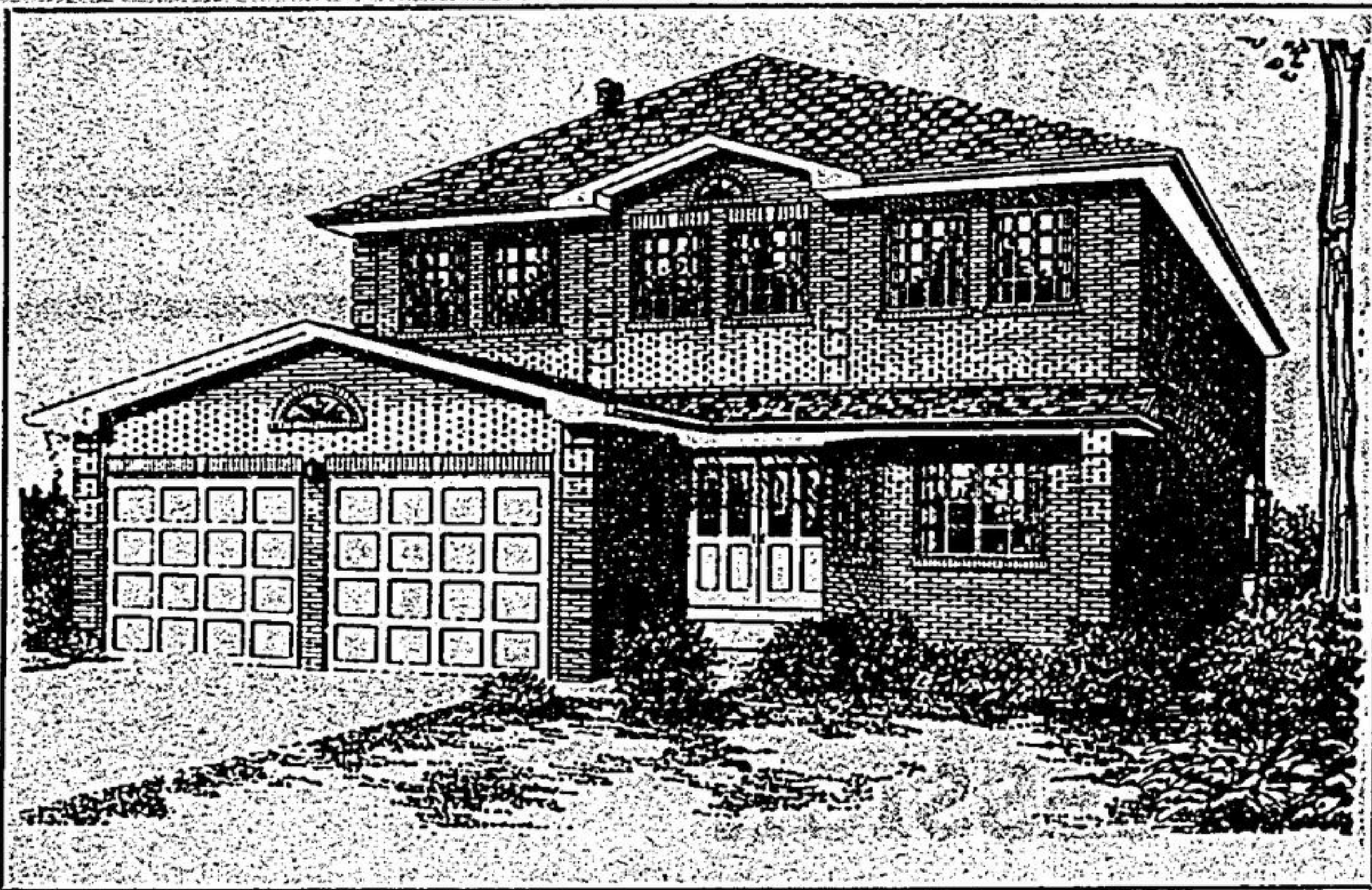
The shops, restaurants and entertainment of Main Street, Markham, are only minutes away. Public transportation, churches and schools are conveniently nearby.

The homes, located on the south side of 16th Ave., east of Hwy 48, range in price from \$151,800 to \$166,200.

All have four bedrooms with the master bedrooms featuring ensuites with Roman-styled tubs and large walk-in closets. All have spacious family rooms with finished fireplaces and walkouts.

The sales office is open noon to 6 p.m. Saturday and Sunday and from 1 to 8 p.m. Monday through Thursday.

For more information call Allan Brown at 294-9072.



THE SCARLETT MAPLE (top right), the Silver Maple (left) and the Sugar Maple (right) are being offered in Markham by Maple Lane Lands and Developments Co. Ltd. Prices range from \$151,800 to \$166,200.



**MAPLE LANE
LANDS & DEVELOPMENT CO. LTD.**

SCARLETT MAPLE

SUGAR MAPLE

MAPLE LANE STANDARD FEATURES

- Ceramic tile floors in entry & powder rooms.
- Traditional or European furniture-finish cupboards & vanities.
- Gas furnace & forced air ducts sized for air conditioning.
- Higher than standard insulation.
- Central vacuum and intercom rough-in.
- Basement bathroom and fireplace rough-in.
- 2 exterior water-taps and power outlets.
- Tongue and groove, plywood subfloors.
- Glass clad sheathing.
- Double glazed casement windows.
- Wood sectional garage doors.
- Door chime and smoke detector.
- Metal clad, insulated double entrance doors.
- All brick construction.
- Aluminum eaves, soffit and fascia.
- Direct entrance into house from garage.
- Ceramic tile and wonderboard up to ceiling in bath & shower enclosures.
- Mirrors in all bathrooms, medicine cabinet in ensuite.
- Colonial or Mahogany interior trim.
- Circular stairs & Oak railings.
- Oval Roman Tub in ensuite.

SITE: 294-9072
HEAD OFFICE: 477-1706
AFTER HOURS: 475-3583

All dimensions & specifications are approximate and are subject to change without prior notice.