

Great way to make lace wafer cookies

Here's a cookie recipe that's so versatile it will fit almost every baking need and so easy that you can have a kitchen full of cookies in a single afternoon.

Lace wafers are delicious little cookie thins with a delightful brown sugar flavor.

As for versatility—just look at some of the ways you can vary the lace wafer recipe for different tasty treats:

- Add unsweetened cocoa and you have chocolate lace wafers.
- Toss in chopped candied fruit for a sweet, fruity taste.
- Sandwich melted chocolate between two wafers for a Florentine treat that's an Italian delight.
- Roll still warm wafers into cones or tubes and dip into melted chocolate or fill with whipped cream.
- Press warm wafers over upside-down muffin pan cups to form lace cups that you can fill with ice cream or fruit.

Now that you've got a scrumptious variety of lace wafer treats, why not wrap up some "winter perk-up" packages for your favorite people? But remember one thing: The present should suit the person who will receive it.

Use your imagination to create packages that will be fun to look at and to open.

For the special niece or nephew, wrap plain lace wafers in a brightly colored box, tie with a big ribbon and attach a small toy to the top.

For those with a more sophisticated palate, fill a calico-lined basket with a variety of rolled, sandwiched and dipped lace wafers. A canister of tea nestled in the basket will complete the ingredients for the perfect winter pick-me-up for everyone.

LACE-WAFERS

- 1 cup sifted flour
- 1 cup finely chopped almonds

- ½ cup light corn syrup
- ½ cup firmly packed brown sugar
- ½ cup margarine
- 1 tsp. vanilla

Stir together flour and almonds. In a one quart saucepan stir together corn syrup, brown sugar and margarine.

Stirring constantly, bring to a boil over medium heat. Remove from heat. Gradually stir in flour mixture. Stir in vanilla.

Drop mixture by scant teaspoonfuls onto cookie sheets, 3 inches apart. Bake in a 350 degree F. oven 6 to 8 minutes or until lightly browned and bubbly.

Cool on cookie sheet on wire rack 1 to 3 minutes, or until cookies are set and slide off cookie sheet.

Remove from cookie sheet with rubber or plastic spatula. Cool cookies completely on wire rack, covered with paper towel. Store in tightly covered containers.

Makes about 6 dozen.
NOTE: Finely chopped pecans or walnuts may be substituted for almonds.

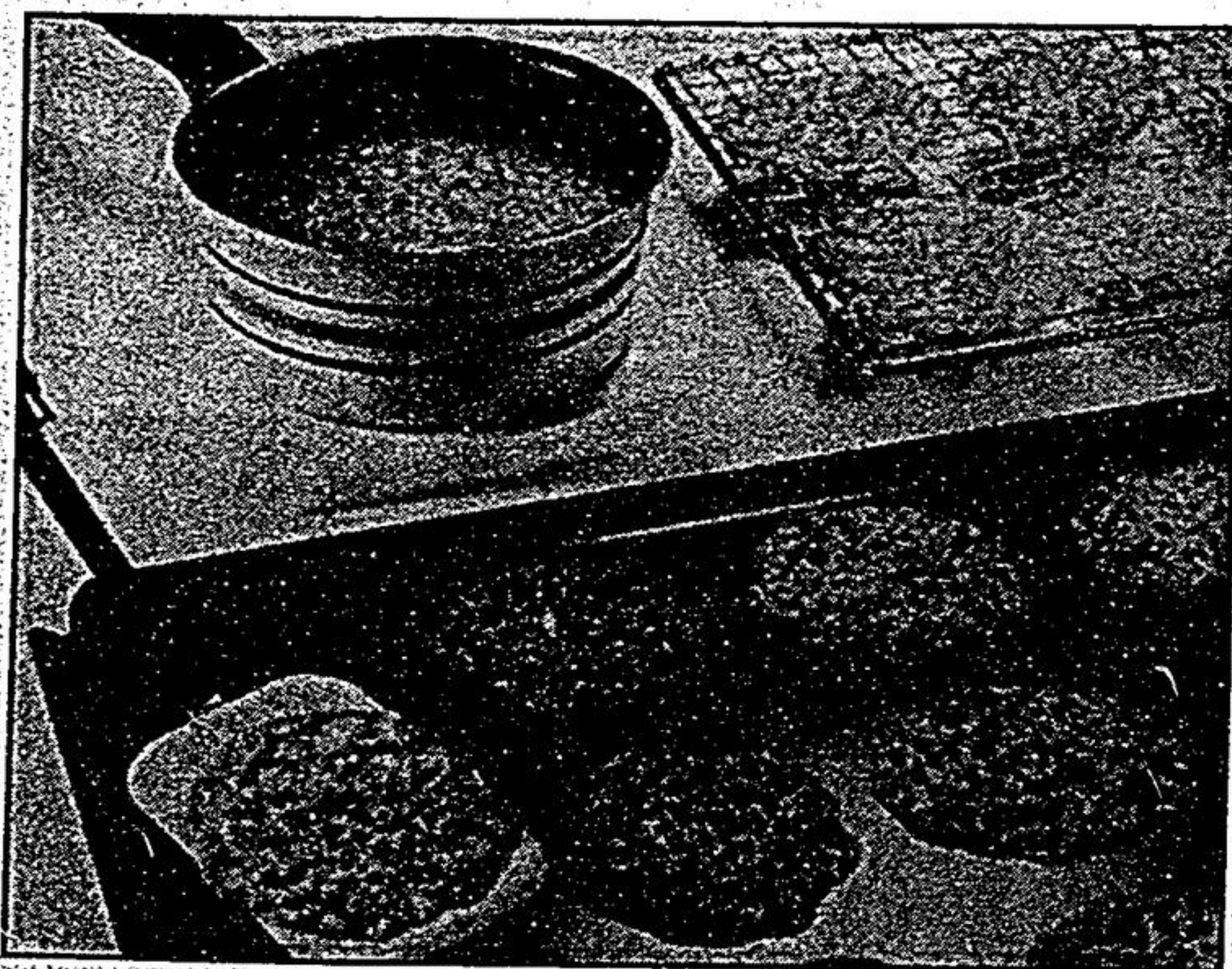
Chocolate Lace Wafers: Follow recipe for lace wafers. Reduce flour to ¾ cup. Sift ¼ cup unsweetened cocoa with flour.

Florentines: Follow recipe for lace wafers. Melt 1 package (6 oz.) semisweet chocolate pieces. Spread melted chocolate on smooth side of one cookie and top with plain cookie, lace side out.

Makes about 2½ dozen.
Rolled Lace Wafers: After removing cookies from cookie sheet, place several cookies lace-side down on cookie sheet.

Heat in 350 degree F. oven 2 minutes. Remove from cookie sheet, one at a time, and roll up lace-side out. Cool on wire rack.

If desired, melt 2 squares (1 oz. each) semi-sweet chocolate; dip one end of each cookie into chocolate. Let stand until chocolate is set.



Lace wafer cookies are simple to make, so simple that if the baker works at it, a large number of cookies can be produced in an afternoon. This is a great timesaver in the Christmas season.

STORE HOURS:
MONDAY TO FRIDAY
 9:00 a.m. - 9:00 p.m.
SATURDAY & SUNDAY
 9:00 a.m. - 6:00 p.m.

PLANT PARADISE

Exotic and Tropical Plants & Trees

GIFT CERTIFICATE IN THE AMOUNT OF

\$ (SAMPLE)

THIS CHRISTMAS GIVE A LIVING GIFT

4 FOOT NORFOLK PINES NOW ONLY... \$20⁰⁰

THEY MAKE GREAT CHRISTMAS TREES

8407 WOODBINE AVE., MARKHAM,
 JUST SOUTH OF HWY. 7 EAST SIDE

SALE **475-1426**

COUPON

CHILDREN EAT FOR 1/2 PRICE

OFF OUR GOODY'S CHILDREN'S MENU

Valid 'til November 30/85

Monday to Thursday only

FAMILY RESTAURANT

Fully Licenced
Children's Menu

Reasonably Priced
For Fine Dining

ROAST PRIME RIBS OF BEEF, QUALITY STEAKS, HOMEMADE BURGERS
 HALIBUT FISH & CHIPS, SALADS AND DAILY SPECIALS
 Price Range from \$2.35 to \$9.95

Markville Shopping Centre
 Upper Level 477-6420

SINGER

CHRISTMAS SAVINGS SALE

Christmas Layaway & Credit Plan Available

THE DEBUTANTE
 Machine Model 6212

\$224⁰⁰

Take-up lever is self-threading. Bobbin removes without fuss. Sews perfect buttonholes. Offers 5 popular stitches including blind hem and overedge. Free arm makes cuffs, sleeves easy to sew. Handle makes it easy to carry.

Get Your Machine In Top Working Order For Christmas Creations at 1/2 PRICE

TUNE UP!

TREAT YOUR SEWING MACHINE TO THE SINGER 19-POINT TUNE-UP!

ONLY \$19⁹⁵

WITH THIS COUPON

Markville Shopping Ctr.
Hwy 77 & McCowan
474-1911

SINGER
Yonge-Eglinton Centre
2300 Yonge St. (at Subway)
487-4438

Fairview Mall
1800 Sheppard Ave. E.
491-4431

Reconditioned Trade-In Machines Available