

G.I.C.
10 1/2%
5 YEAR ANNUAL RATE



REAL ESTATE & FINANCIAL SERVICES

MORTGAGES
11 3/4%
5 YEAR TERM

JUST LISTED



CENTURY CHAMER
3 bedrooms, maple floors, cozy country kitchen, Franklin stove, large front porch, nestled on 133 foot lot. \$122,900.



Larry Raymer
294-1372.



WYCLIFFE BACKSPLIT
\$169,900. Flexible floor plan, main floor den, original owners, pride shows throughout. Upgrades galore, security system. Thornhill Green super location.



Linda & John Hawco
294-7270.



ABSOLUTELY LOVELY
13 Willowgate - Conservation - 4 bedroom, sidesplit, ceramics in foyer, dropped ceiling fluorescent & new floor in kitchen, beautiful landscaping. Betty Innes 294-1372.



SOUTH FORKS NORTH
Georgian style 3400 sq. ft. mansion on nearly 11 acres, barn, pond, just south of Sutton, January possession, gorgeous. \$219,900. Diane Stewart Nigh 294-1372.



BACK TO NATURE
Immaculate bungalow on 10 beautiful treed acres. Double heated garage & workshop, sauna. \$225,000. Agnes Faggiani 640-2082.



POTENTIAL IN-LAW APT.
\$129,900. 2200 sq. foot, 4 bedroom backsplit in Sherwood Estates. Lots of room for a family & Grandma & Grampa too! Heat Pump. Betty Innes 294-1372.



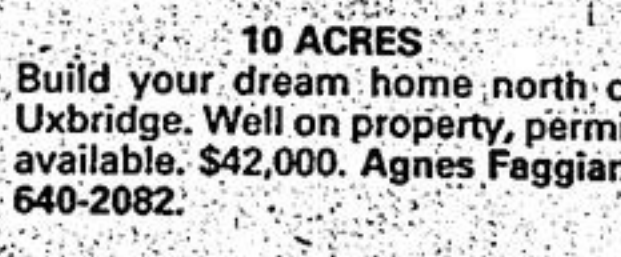
FIREPLACE FOR STOCKINGS
Spacious 4 bedroom with main floor family rm. and fireplace, close to schools and shopping. Good financing available. Come and see! Linda Norman 294-1372.



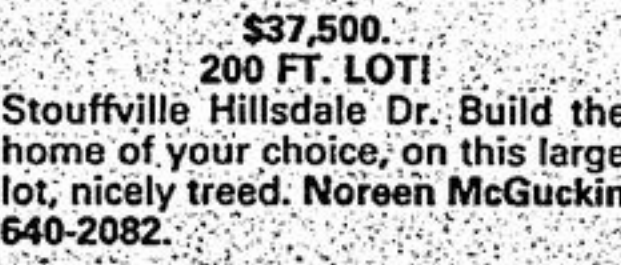
SHERWOOD FOREST
Solid brick home featuring large eat-in kitchen, rec. room with bar plus play room for the kids! Mature tree lot plus more. Maria Gordon 477-1270.



WANT A GOOD INVESTMENT?
\$85,900.
Two family home, 1/3 acre, excellent commuting to 404, great potential for the fixer upper, backing onto open fields. Noreen McGuckin 640-2082.



10 ACRES
Build your dream home north of Uxbridge. Well on property, permit available. \$42,000. Agnes Faggiani 640-2082.



\$37,500.
200 FT. LOT!
Stouffville Hillsdale Dr. Build the home of your choice, on this large lot, nicely treed. Noreen McGuckin 640-2082.

OPEN HOUSES



OPEN HOUSE SAT. 2:30-4:30
- 27 SPRAGG CIRCLE
\$119,500. Well appointed home in excellent condition on an extra large lot. Many upgrades including central air conditioning. Gail Dwyer. Cavill 294-1372.



OPEN HOUSE
4 EUGENIA COURT
SAT. & SUN. 2:00 - 4:00 P.M.
Super starter home. Beautifully decorated. 4 pce. ensuite, fin. rec. rm., fireplace, walkout, premium lot. \$124,500. Wendy Butler 294-1372.



OPEN HOUSE
63 CAMELOT WAY
Saturday, November 23, 2-4; Sunday, November 24, 2-4. Lovely townhouse north of Hwy. 7; East of Wooten Way. \$85,900. Diane Stewart Nigh 294-1372.

SELLING? REFINANCING?

CALL FOR YOUR FREE MARKET ANALYSIS ... COMPUTERIZED AND PERSONALIZED

MARKHAM UNIONVILLE STOUFFVILLE UXBRIDGE
294-1372 477-1270 640-2082 852-3443



(Toronto Direct) 640-4151
(Mt. Albert) 473-3600

Farquharson REALTY LIMITED realtor

114 Main Street West, Stouffville, Ontario L0H 1L0
"SERVING OUR COMMUNITY SINCE 1956"



CLASSIC VICTORIAN
Gorgeous near century home on double lot in Stouffville. Severance possibilities. List \$195,000. Call Sharron Brazier 640-4151.

ONLY ONE IN TOWN
Own your own business. Stouffville - thriving bowling business showing excellent return with repeat business year after year. Just listed \$36,900. Colleen Brown 640-4151.

COMMERCIAL & INDUSTRIAL
5,000 sq. ft. insulated block building on 2 acres. Between Stouffville & Uxbridge on main road. \$110,000. Vendor anxious, try an offer to buy or possible lease. Susan Jenkins 640-4151.

STOUFFVILLE NORTH
\$61,900.
Only 3 mi. to town from this cozy 2 bedroom bungalow with full block basement, 2 decks, plus 50 x 125' lot. Why rent? Qualified purchaser can purchase with only \$7,000 down. Jim Payne 640-4151.

TREE LINED O'BRIEN AVE.
One of Stouffville's loveliest streets offers this 2 1/2 storey red brick on huge L-shaped lot. 3 bdrms, fireplace in dining room, eat-in kit, family room. List \$159,900. Sharron Brazier. 640-4151.
260 ACRES - \$250,000.
Uxbridge area. 150 acres workable, stream, pond and bush. 2 road frontage. Priced to sell. Call John Walley 640-4151.



GERRY Meharg LTD REALTOR

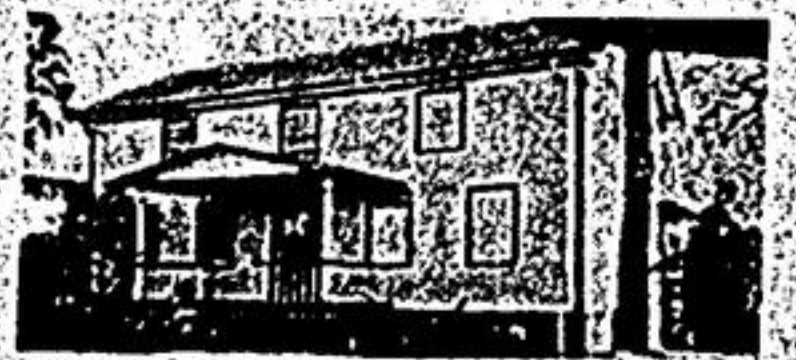
SPECIALIZING IN THE "SMALL TOWN - COUNTRY" LIFESTYLE!

30 ACRES - BALLANTRAE
Excellent property for complete horse set-up or market gardening. Minutes to 404. Permits available. Terms. Asking \$149,900. Call Brian Meharg. Off. 640-3131. Res. 640-5000.

PICTURESQUE SETTING - \$139,900.
10 minutes east of Stouffville. Brick multi-level home surrounded by fruit trees & rock gardens. 4 bedrooms + 1, rec. room with fireplace, den, fam. rm. Many extras. 20 x 14' shed. A must to see. Call Brian Meharg. Off. 640-3131. Res. 640-5000.

30 MINUTES TO 404/401
10 acres with a lovely 3 + bedroom bungalow, 10 stall barn with loft. Small pond. 2 small bushes. 3 fenced paddocks. Value @ \$149,900. Call Hank DeGroot. Off. 640-3131. Res. 640-3948.

MT. ALBERT \$35,900.
10 acres, bush, river. Just North of Mt. Albert. Possible future bldg. site. Priced to sell quickly @ \$35,900. Call Hank DeGroot. Off. 640-3131. Res. 640-3948.



CIRCA 1830 - MARKHAM
Professionally restored - many original features. 2,000 sq. ft., 4 bedrooms, 3 baths; hand-carved fireplace mantel, separate dining room, rec. room with antique (1881) bar, marble/granite fireplace & sauna. Outdoor brick barbecue. Paved drive, tandem 2 car garage with automatic doors. Mature trees. Call Hank DeGroot. Off. 640-3131. Res. 640-3948.

SECLUSION & LOCATION
Ballantrae - 3 separate, 10 acre lots on paved road just 10 minutes from Hwy. 404. 11,000 pine on each. Permits available. Asking \$139,000 with good terms. Call Brian Meharg. Off. 640-3131. Res. 640-5000.



N.E. BALLANTRAE - \$129,500
Almost 2 acres backing onto farm. Quiet location close to paved road. Custom brick raised bungalow - open floor plan - spiral stairway to fully finished lower level. 2 baths. 2 + 2 bedrooms. Loaded with closet space. Quality Throughout. Call Lee Weldon. Off. 640-2600. Res. 640-2770.

STOUFFVILLE - 4 BEDROOMS!
Brick 2 storey on quiet dead-end street. Large lot backing onto fields. Charming home features recently renovated kitchen, cozy family room with fireplace, main floor laundry, 1 1/2 baths, rec. or 5th bedroom. Shows well. Early spring possession. See it with Lee Weldon. Off. 640-3131. Res. 640-2770.



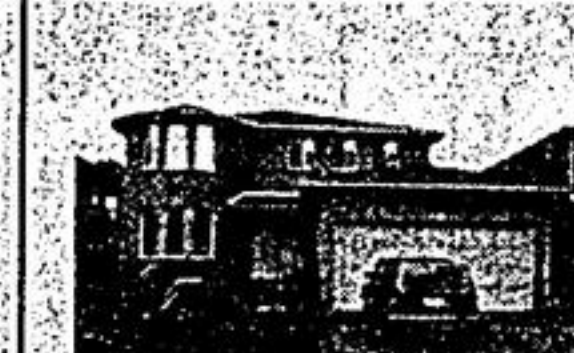
RE/MAX EXPERIENCE COMPETENCE! PERFORMANCE!

SERVING MARKHAM / UNIONVILLE, STOUFFVILLE, UXBRIDGE AND SURROUNDING AREAS

10 MIN. TO 404 \$149,900.
Uxbridge West. 37. Rolling acres on paved road. Some mixed bush. Great place to build your energy efficient dream home. Pauline Mancini 640-6755. Re/max Scugog Realty Limited Rltr.



COUNTRY IN TOWN
Gorgeous Treed Lot Backs To CONSERVATION. Super View. Right in Markham. 5 Br. Sidesplit. REDUCED TO SELL \$154,000. Immediate possession possible. For details call Shirley Kortschot 477-5500, 294-4574. Re/max Markville Realty Ltd. Rltr.



WON'T LAST LONG... 3 BEDROOM LINK
Extras include fireplace in living room, walk to GO train & downtown Markham. \$113,500. Joyce Ramer Walker 477-5500, res. 294-7878. Re/max Markville Realty Ltd. Rltr.



LOVELY HALCOURT MODEL
2 storey brick home, well appointed, 4 bedroom, ceramic kitchen, main floor family room. 2375 sq. ft. home, shows immaculate. Melodie Shurgour 477-5500. Re/max Markville Realty Ltd. Rltr.

DOWNTOWN MARKHAM - \$295,000.
Custom built Canadian design!! 3,000 sq. ft. overlooking ravine. Master bedroom on main floor. Cathedral ceiling with huge antique brick fireplace. 3 1/2 oak floors. A must to see!! Dan LeBarr 477-5500, res. 471-1774. Re/max Markville Realty Ltd. Rltr.



NEW LISTING! MUSSELMAN'S LAKE
1 1/2 storey, 3 bedrooms, large cozy kitchen with wood stone den or 4th bedroom needs a little work but great potential. \$61,900. Vera Lidster 640-4960. Re/max Executive Realty Inc. Rltr.



CAPE COD BEAUTY
Ravine 1/2 acre lot, Markham North. 3 or 5 bedroom; study, separate LR and DR, main floor family, fireplace. Asking \$179,000. Len Powell 640-4960. Re/max Executive Realty Inc. Rltr.



TREES ALL AROUND!!
This beautiful large home is surrounded by trees - ravine at the rear for real privacy yet it is in the middle of town. 5 bedrooms, den and fam. room. Call Mary Jane Swanson or Charles de Bourbon 477-5500. Re/max Markville Realty Ltd. Rltr.



ENJOY XMAS IN YOUR NEW HOME
Just listed in Stouffville 2 storey, 4 bedroom, 1 1/2 baths, fireplace, eat-in kitchen, 3 appliances, fenced yard. \$109,900. Derek Thornton 640-4960. Re/max Executive Realty Inc. Rltr.



JOHANNA PARKER
I am urgently looking for properties for my clients.

Firm Buyers for a CABRIOLET in the Bridle Trail.
Firm Buyers for a semi in Unionville or Hepworth Way/ Bramble Way in Markham.
Firm Buyers for 3,000 sq. ft. in Unionville on Ravine.
If you are contemplating a move, please call me. Johanna Parker. 477-5500. Re/max Markville Realty Ltd. Rltr.



NEW ON THE MARKET!
Court location in Unionville. Large pie lot with pool, backing to park. Traditional 4 bedroom home with main floor family rm. A must to see! Johanna Parker 477-5500. Re/max Markville Realty Ltd. Rltr.



UNIONVILLE TOWNHOME
\$89,900. Three storey, 3 bedrm., oversized kitchen, rec. rm. w/southern exposure, lots of closets, new furnace, central air, immaculate! Hurry! Mary Jane Swanson 477-5500. Re/max Markville Realty Ltd.



MARKHAM/UNIONVILLE 477-5500 **STOUFFVILLE 640-4960** **UXBRIDGE 640-6755 - 852-6143**
RE/MAX markville realty ltd. rltr. RE/MAX executive realty inc. rltr. RE/MAX scugog realty limited rltr.

shop
Economist & Sun The Tribune before you shop the stores