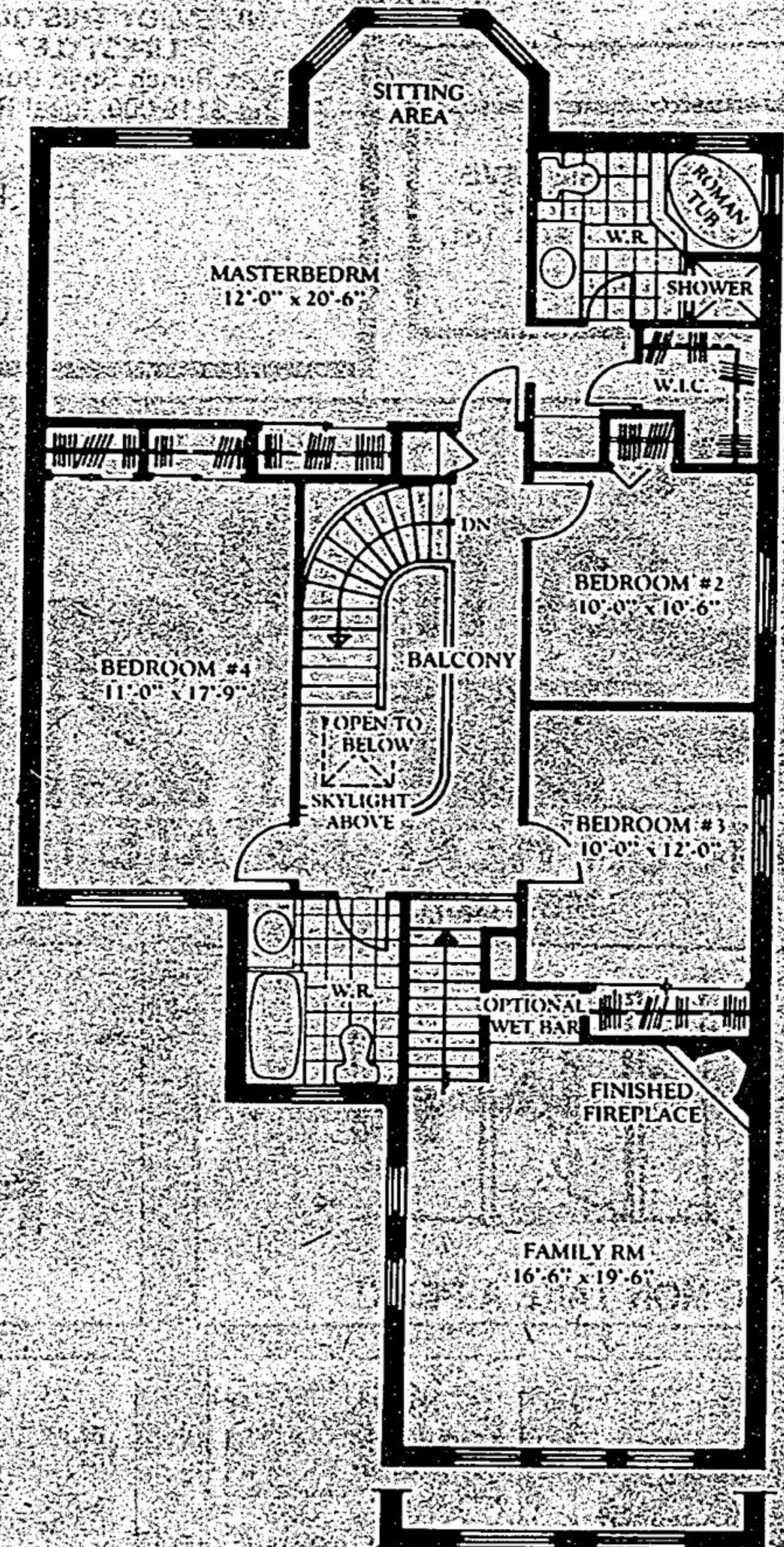
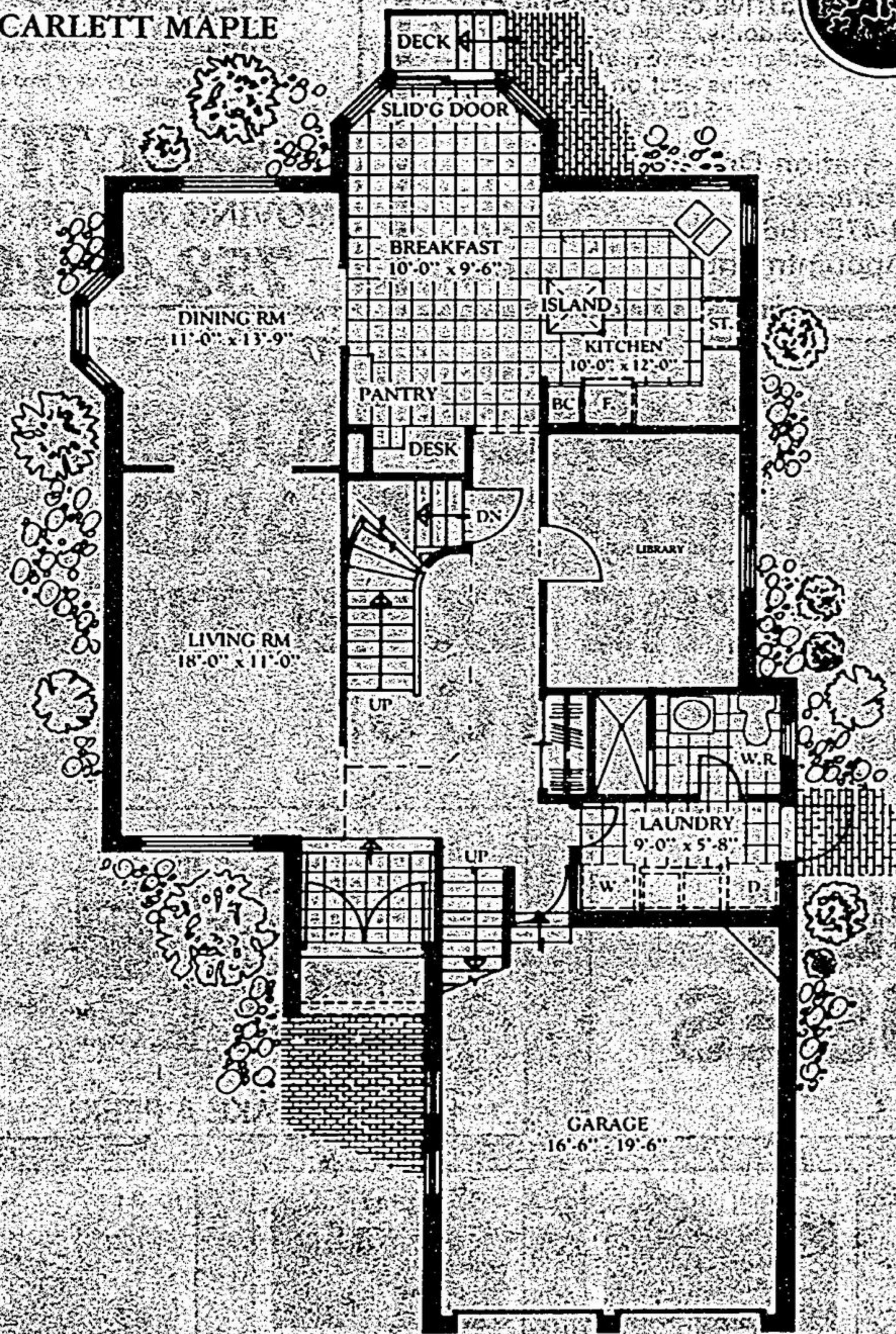


MAPLE LANE
LANDS & DEVELOPMENT CO. LTD.

SITE: 294-9072
HEAD OFFICE: 477-1706
AFTER HOURS: 475-3583

SCARLETT MAPLE



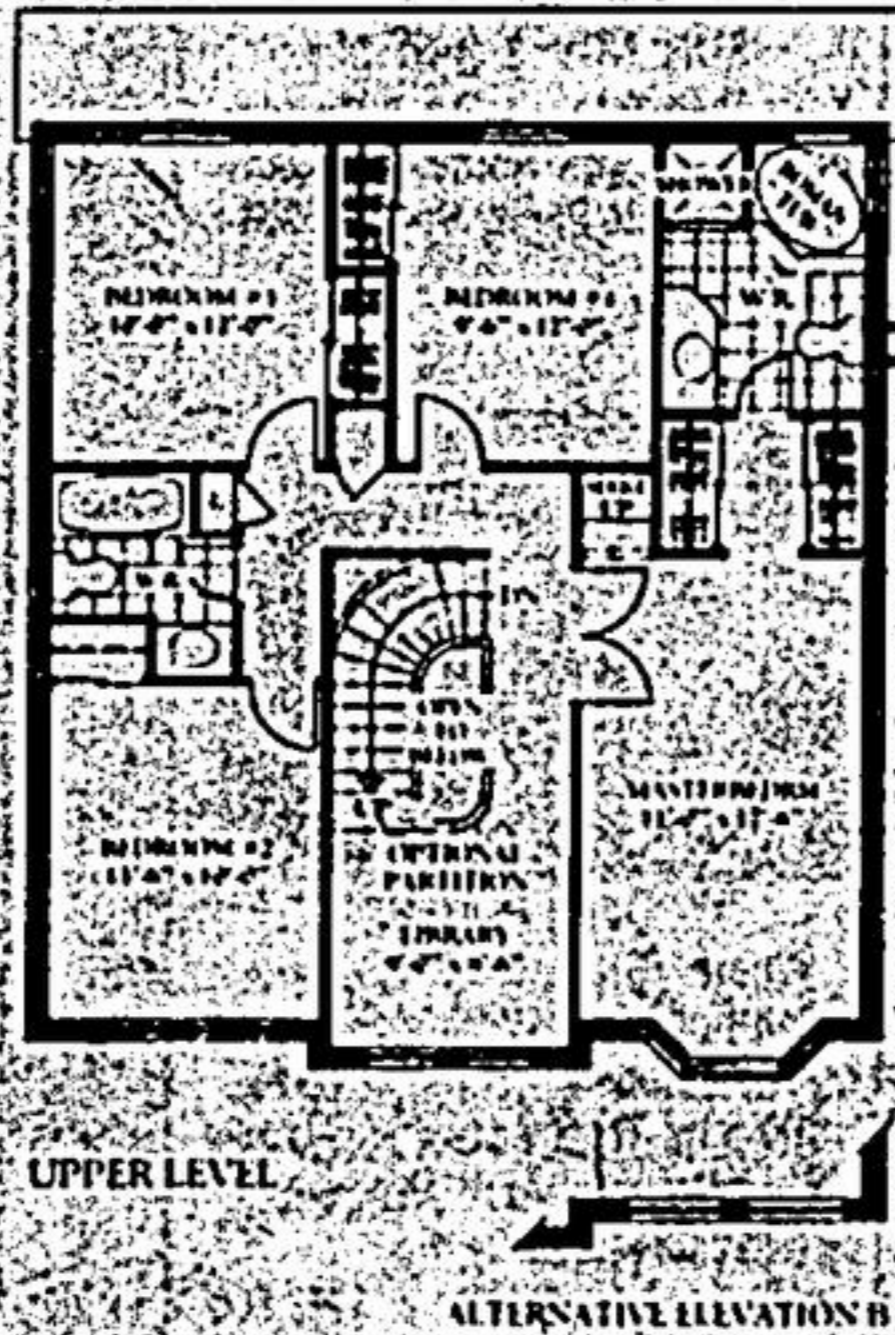
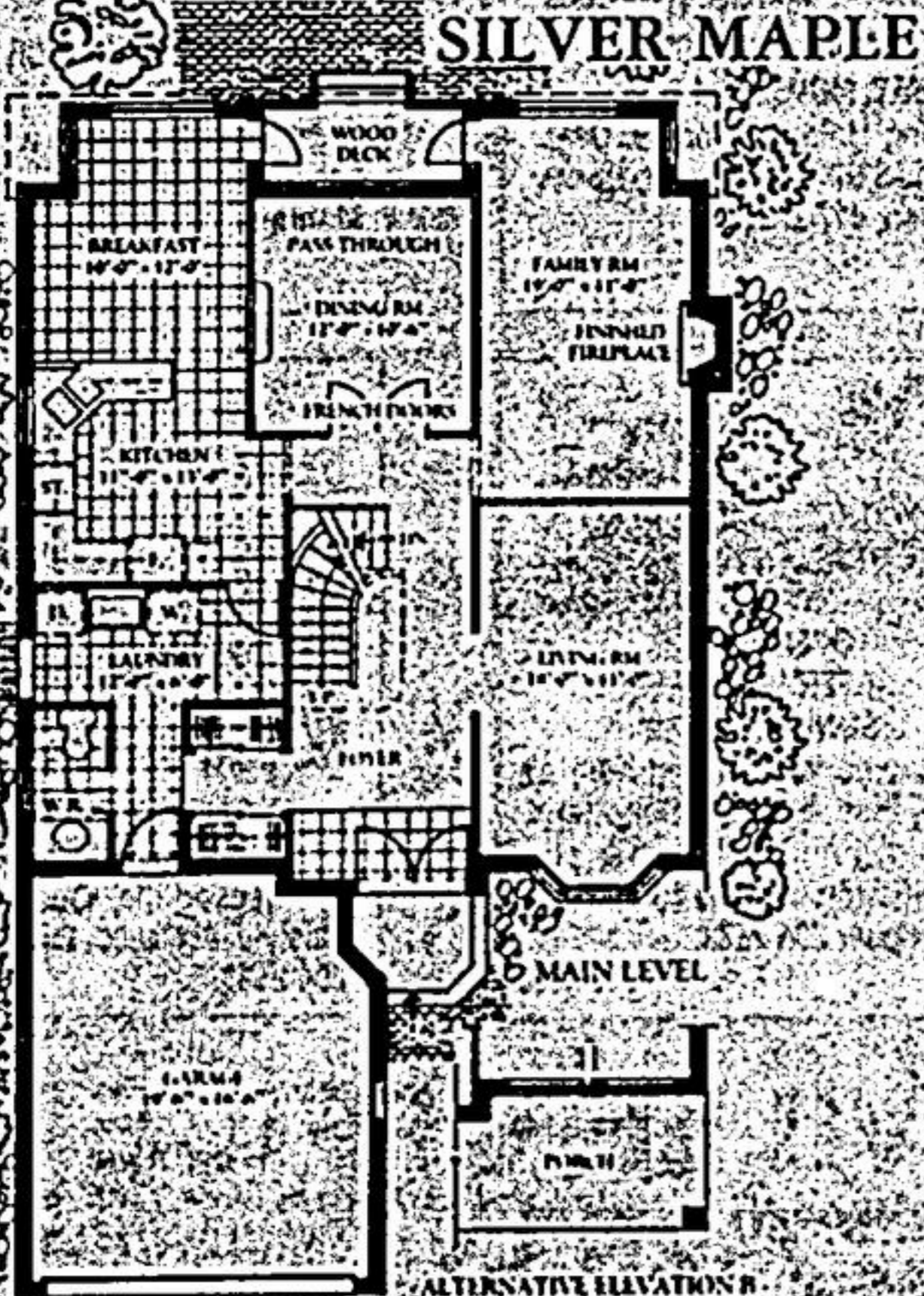
MAPLE LANE STANDARD FEATURES

- * Ceramic tile floors in entry & powder rooms
- * Traditional or European furniture-finish cupboards & vanities
- * Gas furnace & forced air ducts sized for air conditioning
- * Higher than standard insulation
- * Central vacuum and intercom rough-in
- * Basement bathroom and fireplace rough-in
- * 2 exterior water-taps and power outlets

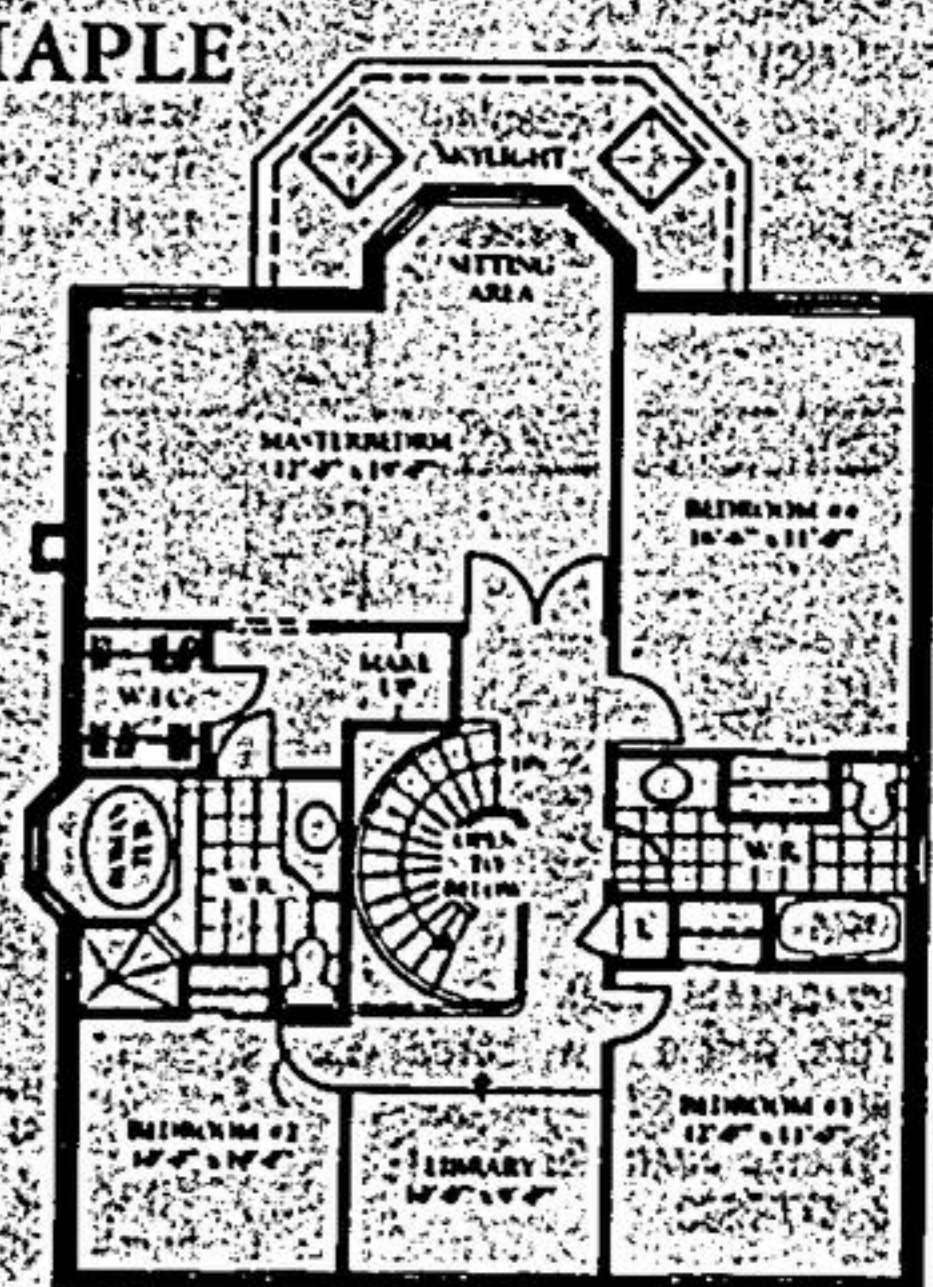
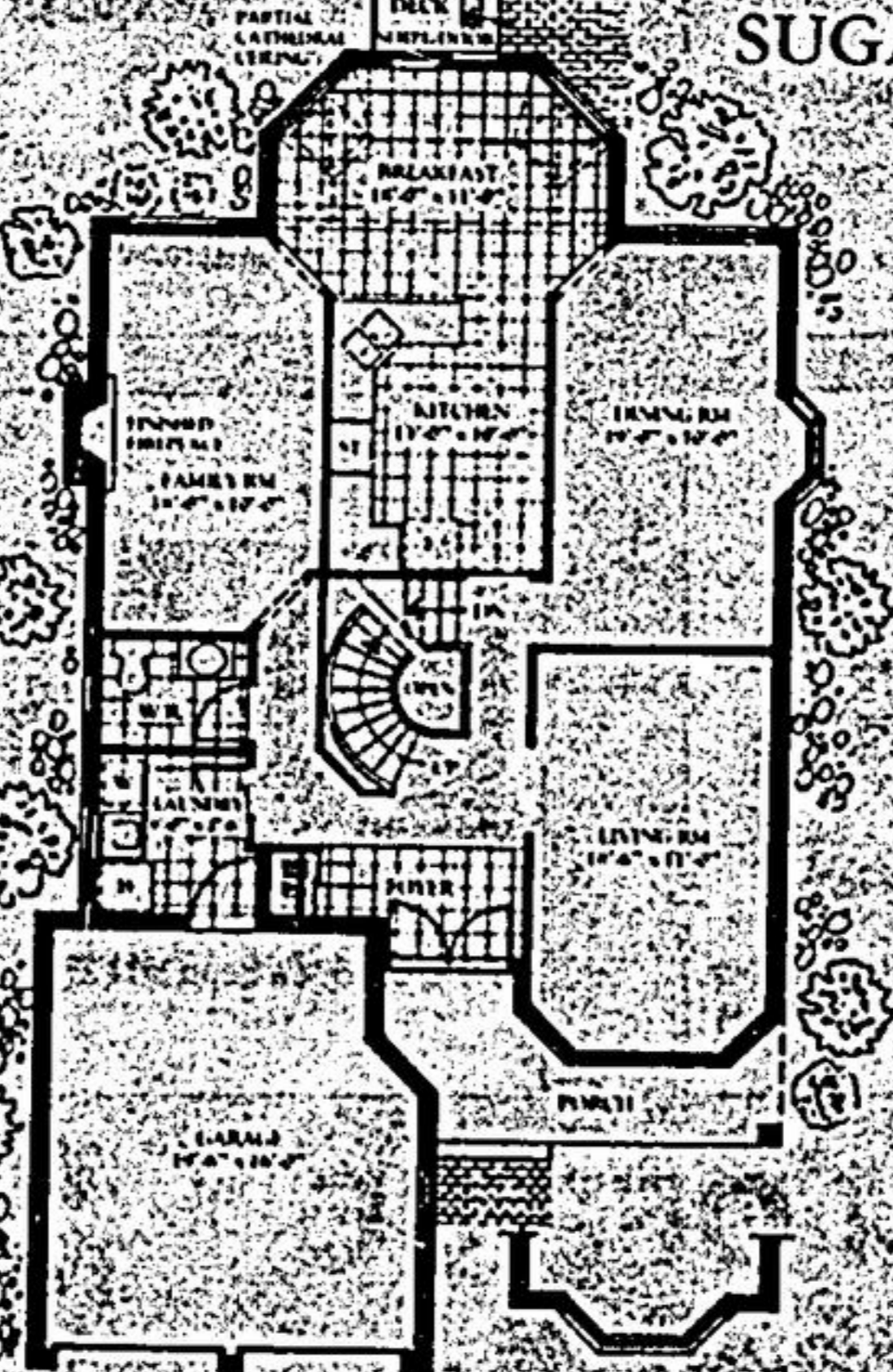
- * Tongue and groove, plywood subfloors
- * Glass clad sheathing
- * Double glazed casement windows
- * Wood sectional garage doors
- * Door chime and smoke detector
- * Metal clad, insulated double entrance doors
- * All brick construction
- * Aluminum eaves, soffit and fascia

- * All dimensions & specifications are approximate and are subject to change without prior notice.
- * Direct entrance into house from garage
- * Ceramic tile and wonderboard up to ceiling in bath & shower enclosures
- * Mirrors in all bathrooms; medicine cabinet in ensuite
- * Colonial or Mahogany interior trim
- * Circular stairs & Oak railings
- * Oval Roman Tub in ensuite

SILVER MAPLE



SUGAR MAPLE



All dimensions & specifications are approximate and are subject to change without prior notice.

All dimensions & specifications are approximate and are subject to change without prior notice.