

**Peter L. Mason**  
LIMITED REALTOR



**SOLD IN 4 WEEKS**  
7 SUMMERFELDT CRES.  
Asking \$149,900. Joyce Crix 474-1710, 477-6174.



**EXCELLENT FAMILY HOME**  
UNIONVILLE  
135' lot, quiet court, 4 bdrms., super fam. room, W/O to fenced yard, cac, F/Place, yours to enjoy. Vendors bought.



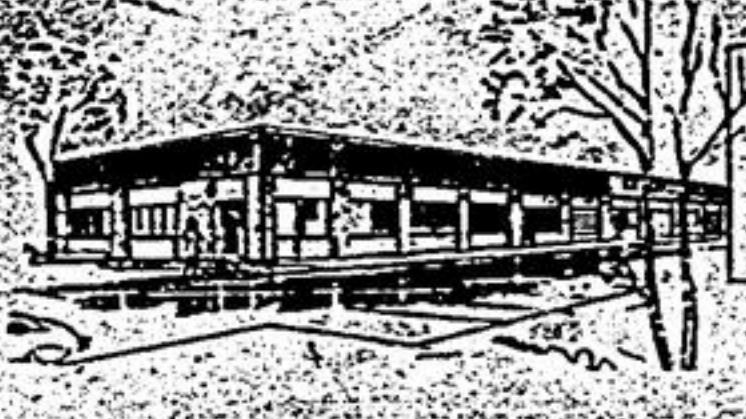
**HOT OFF THE PRESS**  
UNIONVILLE EXECUTIVE  
Features 3200 sq. ft. 4 bdrms., den, M.B. with bed-sitting, gourmet kitchen, circular staircase, pool, huge deck, M.F., fam., laundry, 160' lot, beautiful throughout. Joyce Crix 474-1710, 477-6174.



**JUST REDUCED - \$149,900.**  
UNIONVILLE  
4 bedrooms, 2 storey, main floor family room, central air, inground pool. Call Jeanne Page 474-1710, 477-1233.

**THE SIGN OF QUALITY**  
474-1710 HWY #7 UNIONVILLE

**NOW LEASING**  
22,000 sq. ft.  
Mulock and Yonge Area



11,000 sq. ft. available mid-Oct.  
**COMMERCIAL - RETAIL OFFICE SPACE**

**Erron Industrial Units**  
895-7677 773-6296  
Days Evenings  
Newmarket's Finest Commercial Complex



**K.R. MAY REAL ESTATE LIMITED**  
640-2223  
1830's LOG HOME

Nestled in the trees on 2 acres near Uxbridge is a fabulous restoration of an original Québec square timber home. Cooking fireplace with bread oven in the living room, library with fireplace, adjoining master with ensuite. Perfect couple's weekend retreat. \$197,500. Call Lynda Hayward-Baird, 640-2223 or 640-2738.

**BLOOMINGTON ROAD**  
Charming 1/2 acre lot with fine old maples and excellent garden. Existing cottage with updated services on quiet street. Asking \$55,000. Call Lynda Hayward-Baird 640-2223 or 640-2738.

**BROOKDALE ROAD**  
A piece of elegant history just south of Uxbridge, 7 acres of trees, south ravine, pond and stream waiting for interesting architecture. Asking \$85,000. Call Lynda Hayward-Baird, 640-2223 or 640-2738.



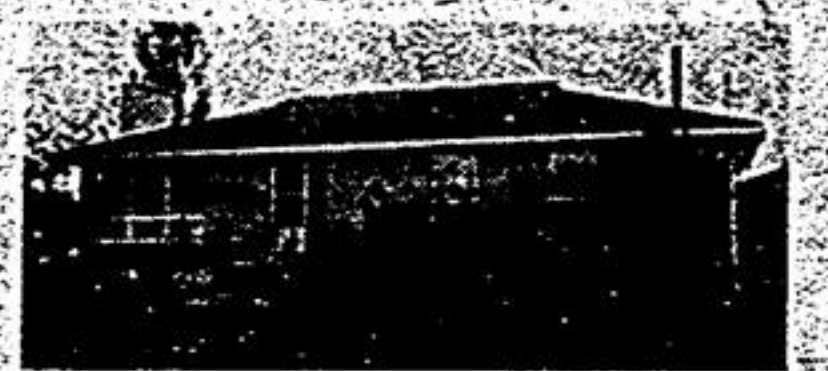
**10720 YONGE STREET**  
Richmond Hill, Ontario  
**UNIONVILLE BEAUTY**  
Bridle Trail, \$163,000. Lovely home near green belt, pool size lot. Located on Quiet Cres.  
Call Andre Parent  
84-0111 or 474-1549

**GERRY Meharg**  
LTD REALTOR

SPECIALIZING IN THE "SMALL TOWN - COUNTRY" LIFESTYLE!



**JUST NORTH-EAST OF MOUNT ALBERT**  
10 acres, pond, some bush, 10 stall barn with hayloft, 3 fenced paddocks. Roomy 3 bedroom bungalow. Extra bedroom or office. New kitchen, fireplace in living room, large family room. Double attached garage. Lots of extras. Asking \$149,900. Call Hank DeGroot 640-3131 Res. 640-3948.



**VANDORF NORTH EASY COMMUTING**  
1/2 mile to new 404 interchange. 3 bedroom bungalow living room has stone fireplace and picture window. Finished rec room comes with airtight stove. Mature 75 x 200' lot. Asking \$102,500 Call Hank DeGroot 640-3131 Res. 640-3948.



**PEPPERLAW - LAKE ACCESS**  
One lot on river, plus one tree lined lot with newer, quality built 3,000 sq. ft. home. Separate apartment with large stone fireplace and walkout, huge kitchen, 2 bedrooms. House features walkout to arden, main floor laundry, large living room with southern exposure. Asking \$118,000. Call Hank DeGroot 640-3131 Res. 640-3948.



**DUPLEX \$86,900.**  
6 miles to Stouffville - Large fenced yard, separate entrances. Go bus @ door. Call Lee Weldon. Off. 640-3131, Res. 640-2770.



**OPEN HOUSE**  
VANDORF - SUNDAY SEPT. 29  
1:30 - 4:30 P.M.  
North on Woodbine from Bloomington Road to 7 Wilmac Court. Spacious 4 bedroom home, main floor family room & den. \$189,900. Frank Hippmann. Tor. 640-3131, Res. 640-1149.



**BACKSPLIT - UXBRIDGE**  
Spacious custom built in 1981. Fenced yard, 3 + 2 bedrooms, kitchen overlooks family room with fireplace. Insulated garage. Walk to shopping! Asking \$99,900. Call Lee Weldon. Off. 640-3131, Res. 640-2770.

**PEPPERLAW \$77,900.**  
Very attractive 1,700 sq. ft. 3 bedroom bungalow on treed 85 x 200' lot. A pleasure to own. Call Conny Hippmann. Tor. 640-3131, Res. 640-1149.

**Town Living** 104 Main Street West  
Stouffville, Ontario. Stouffville 640-2225 Uxbridge 473-2440  
Realty Limited



**NEW LISTING - STOUFFVILLE**  
1 1/2 storey, board and batten, 3 bedroom home on a large lot. Central location with schools and shopping within easy walking distance. Main floor family room, 2 baths, pine eat-in kitchen with built-ins. Detached garage. \$98,500. Lorraine Harman 640-2225 or 640-3154.

**\$2,000 DOWN!**  
With a \$2,000 downpayment your monthly payments will be less than \$100. (based on a 2-yr. term at 10.75%) for one of these 10 acre lots near Kirkfield. Permits available now, or hold for investment. All lots include deeded lake access. 4 to choose from at \$12,500. For more details call Peter Harris 640-2225, 473-2440.

**CHALK LAKE SIDEROAD**  
Listed at \$56,900. 3 bedroom cottage located on a lovely treed 4/5 acre lot near two ski areas. Peter Harris 640-2225, 473-2440.

**WASAGA BEACH**  
Choose your year round vacation homesite in this parklike setting close to superb beach, golf courses and ski areas. Paved roads, underground hydro, phone and cable TV. Peter Harris 640-2225, 473-2440.

**THE TOWN AND COUNTRY SPECIALISTS**

**RE/MAX EXPERIENCE COMPETENCE PERFORMANCE!**  
SERVING MARKHAM / UNIONVILLE, STOUFFVILLE, UXBRIDGE AND SURROUNDING AREAS

**STOUFFVILLE**  
Gorgeous raised bungalow with spectacular view cathedral ceiling in living room, fin. basement, walkout to huge deck. \$86,900. Vera Udster 640-4360 Re/max executive realty inc. rtr.

**A REAL PRICE REDUCTION**  
A prime location. Full finished basement. Lots of space for extra vehicles. Move-in condition, easy commuting. Bob Newman 294-5817, 640-4960 Re/max executive realty inc. rtr.

**CENTURY HOME**  
Charming home on mature lot, main floor family, 1 1/2 bath, pine floors, tastefully restored. Asking \$135,900. Len Powell 640-4960 Re/max executive realty inc. rtr.

**Looking For A Retreat**  
Uxbridge North: 50 acres, maple, birch, pine. Great firewood supply. Only \$34,900. 1 Rm. log cabin. Pauline Mandl, 649-6795 Re/max Scougog Limited Rtr.

**"GROWN YOUR OWN!"**  
"Preserve Your Own" 12.24 acres bush & farm, 3 br. raised bungalow with fireplace & in-law apt. on main road, just east of Stouffville. Cut your own wood - Also barn. Joyce Ramer Walker 477-5500 pager 237-8215 Re/max Markville Realty Ltd. Rtr.

**THANKSGIVING**  
Will be a special occasion this year to you & your family in your "New". Costain with greenhouse kitchen, family room with fireplace, cent. air & vac. Joyce Ramer Walker 477-5500 pager 237-8215 Re/max Markville Realty Ltd. Rtr.

**LUXURIOUS ESTATE**  
Rural Markham Village - Close to 404, 2700 sq. ft. Quality handcrafted kitchen cabinets. Sunken living room. Huge rec. room with walk-out. Extensive decking and large granite pool. Call John Mosteard or Ron Elliott 477-5500 Re/max Markville Realty Ltd. Rtr.

**DAY CARE - PRIVATE SCHOOL?**  
Thornhill small church total usable area almost 5000 sq. ft. Auditorium, gym kitchen, etc. 75x290' lot. Close to Yonge St. Ron Elliott, 477-5500. Re/max Markville Realty Ltd. Rtr.

**EXCELLENT INVESTMENT**  
Unionville - Luxury townhouse - very attractive 3 bedroom on quiet court, large eat-in kitchen, ground floor family room. Near schools and shopping. Call John Mosteard 477-5500, Res. 294-3677. Re/max Markville Realty Ltd., Rtr.

**1/4 ACRE RURAL BUILDING LOT**  
CLOSE TO 404  
Ron Elliott 477-5500  
Re/max Markville Realty Ltd. Rtr.

**FRESH ON MARKET TREES - POOL - CABANA**  
Truly a family home. 3 + 2 bedrooms, huge eat-in kitchen, unique brick fireplace, fabulous 155 ft. lot - backs park mins. to main street & schools. \$149,500. Tony Sullivan 477-5500, 294-8442.

**STORES FOR LEASE!**  
New shopping centre on highway 7. Space available to 10,000 sq. ft. Be a part of the excitement coming to this excellent area. Charles de Bourbon, Mal Crawford 640-4162 Re/max Markville Realty Ltd. Rtr.

**"AUTUMN TOUR OF COUNTRY HOMES"**  
Located on Estate Lots in Stouffville and Uxbridge sponsored by the Stouffville Christian School October 17th, 1985 from 1:00 P.M. TO 5:00 P.M. Tickets \$8.00 Seniors \$5.00 available at Re/max Markville Realty Limited - across from Markville Mall and Re/max Executive Office on Main Street in Stouffville.

**MARKHAM/UNIONVILLE 477-5500**  
**STOUFFVILLE 640-4960**  
**UXBRIDGE 640-6755 / 852-6143**  
RE/MAX markville realty ltd. rtr. RE/MAX executive realty inc. rtr. RE/MAX scougog realty limited rtr.

(Toronto Direct) 640-4151 (Mt. Albert) 473-3600  
**Farquharson REALTOR**  
114 Main Street West, Stouffville, Ontario L0H 1L0  
"SERVING OUR COMMUNITY SINCE 1956"

**EXECUTIVE 2 STOREY**  
Stouffville: You've got it all in this one! 4 bdrms, 3 baths, eat-in kitchen, family rm. with fireplace, main floor laundry, rec. rm., 2 car garage, 225' deep lot. List \$119,000. Sharron Brazier. 640-4151.

**STOUFFVILLE NORTH 33 ACRES/SIDESPLIT**  
Speculation plus on this one! 16 lot subdivision with 1500 sq. ft. sidesplit! Only \$164,900. Jim Payne 640-4151. **SOLD**  
**BRICK HOME/HUGE LOT**  
Stouffville finished bungalow, 2 bdrm. 100' lot. Just listed. Jim Payne 640-4151.

**PICKERING COUNTRY ESTATE**  
Within easy commuting distance of Toronto lies a special dream. Tall trees surround this large magnificently preserved century home on 92 acres. Swimming pool, trout pond, duck pond, mature dwarf apple orchard, garden, out buildings, all contribute to a feeling of serenity and well being. North east of Toronto. This property is priced at \$445,000.  
To view this lovely estate call between the hours of 10 a.m. - 8 p.m. (416) 649-2626.  
no agents please

**UNIONVILLE CHARMER \$88,500**  
Brick 3 bedroom, finished recreation room, with cosy fireplace. Almond refrigerator and stove. Mortgage 8-7% till July/86.  
Call Dale Smith 438-7070 or 298-3162  
MAYFLOWER REAL ESTATE LTD.

**PHILIP MIHOREAN & ASSOCIATES LTD. REALTORS & APPRAISERS 4701 HWY 7, UNIONVILLE**  
**OPEN HOUSE UXBRIDGE NORTH TOWNLINE SUNDAY, SEPT. 29, 12 NOON - 4 P.M.**  
1/4 mile east of Wilson Sales Barn. 30 acre working horse farm with superb view, 6 stall horse barn, 3 bedroom, cedar log home, rolling hills, stream, trees, fenced paddocks & pastures 5 minutes from Uxbridge. Asking \$179,000. Call John Clifford 477-1777 or 261-8758.

**MODEL HOME WILL BE UP SOON**  
STOUFFVILLE REAL ESTATE LTD. presents MAPLE PARK ESTATES, a mini community located on the west side of Hwy. 48 just 700 feet north of Aurora Sideroad in Ballantrae with 6 acres maple bush park.  
28 exclusive homes reflecting ageless design, exciting interiors and custom features included only in better built homes. Homes designed with today's lifestyle in mind. Homes that are built to last and to pass on to the next generation. Come and see these innovative plans today.

**SOME CUSTOM FEATURES:**  
2 x 6 wall construction  
All clay brick exterior  
Circular staircase  
Quality accessories  
Some with greenhouse kitchen  
thermopane windows Dastwood  
Roughed-in vacuum system  
Roughed-in AM/FM radio

Approx. 1/4 acre lots with 150' frontage  
Some lots with hardwood bush  
Some lots partially treed  
Brick fireplace  
Forced air electric heat  
Aluminum soffits and fascia  
3/4" spruce plywood for flooring  
200 amp service with circuit breaker panel

**WE'VE GOT IT ALL PRICES, LOCATION, QUALITY AND VALUE 8 PLANS TO CHOOSE FROM OR YOUR OWN PLAN**  
Options are available. Starting at \$139,900.00 for 1775 sq. ft. bungalow with attached double car garage and \$154,900.00 for 2245 sq. ft. 2 storey with attached double car garage. Triple car garage additional \$2,500.00 only. Prices, terms & spec. subject to change without notice.

**STOUFFVILLE REAL ESTATE LTD. EXCLUSIVE AGENT**  
North-west corner Hwys. 47 & 48, Stouffville  
**640-1200 OR 649-2266**