

Come to Church

Stouffville Pentecostal Church

460 MAIN ST., STOUFFVILLE, ONTARIO • 640-5696
 SUNDAY SCHOOL 9:45 A.M.
 WORSHIP SERVICE
 11:00 A.M.
 Pastor Pitts Preaching
 SUNDAY EVENING RALLY
 6:00 P.M.
 Hear Ex-Convict ERNIE HOL-
 LANDS - A dynamic true story
 "From Jail to Jesus"
 BIBLE STUDY - TUES. 7:30 P.M.

MCCORMACK MEMORIAL CHURCH
 PASTOR: REV. W. GAWA
 9:45 A.M. - Sunday School - Balanced Living
 11:00 A.M. - "The Word of Truth"
 7:00 P.M. - Evil and Good
 Fri. Oct. 11
 Thanksgiving Supper
 Vivian Rd. #48
 Ballantrae

NURSERY SUPERVISION AND JUNIOR CHURCH PROVIDED

STOUFFVILLE BAPTIST CHURCH
 (a Fellowship Church)
 176 Main St., West
 Sun. Sept. 29th 1985
 9:50 A.M. Bible School
 11:00 A.M. Morning
 Worship - Rev. Corbett
 6:50 P.M. Evening Ser-
 vice - Rev. Corbett
 Wednesday
 8:00 P.M. Prayer and
 Bible Study
 For information call
 640-2651

APOSTOLIC LUTHERAN CHURCH
 70 Dickson Hill Rd.
 Dickson Hill
 Pastor-Matti Valitalo
 831-4950
 9:45 A.M. - Sunday
 School
 9:45 A.M. - Finnish Ser-
 vice
 11:00 A.M. - English Ser-
 vice
EVERYONE WELCOME

SPRINGVALE BAPTIST CHURCH
 Gormley-Stouffville
 Rd.
 At 6th Conc. (Kennedy Rd.)
 Rev. Robert Flemming
 Sun. Sept. 29th 1985
 9:45 A.M. - Bible School
 11 A.M. - Morning
 Worship
 7 P.M. - Evening Service
ALL ARE WELCOME

HEISE HILL BRETHREN IN CHRIST CHURCH
 Gormley, Ontario
 Rev. Marlin K. Ressler
 Pastor
 Phone: 887-5489
SUNDAY, Sept. 29th
 Christian Education
 Hour 10:00 A.M.
 100th Anniversary of
 the Heise Hill Sunday
 School
 Worship Hour 11:00
 A.M.
 Message by Pastor
 Ressler
 Fellowship Luncheon
 12:30 P.M.
 Pictures and Re-
 miniscing 2:00 P.M.
 No Evening Service
WED. Oct. 2nd
 Club Program 7:00
 P.M.
 Bible Study 7:30 P.M.
 You Are Welcome
 At Heise Hill

THE ANGLICAN PARISH OF CHRIST CHURCH
 254 Sunset Blvd.,
 Rev. David Bolton
 640-1461
 Sun. Sept. 29, 1985
 8:00 a.m. & 10:00 a.m.
HOLY COMMUNION

ST. MARK'S CATHOLIC CHURCH
 STOUFFVILLE
 640-6665
SUNDAY MASS SCHEDULE
 Saturday 5 p.m.
 Sunday 10:30 a.m.

STOUFFVILLE UNITED CHURCH
 34 Church St. N.
 Rev. Cecil W. Tiller
 Minister
 Sun. Sept. 29th 1985
 11:00 A.M. - Morning
 Worship
 Guest Speaker - Rev.
 Chris Miller
 Church School Pro-
 gram for all ages, in-
 cluding infant care.
ALL ARE WELCOME

MEMORIAL CHRISTIAN CHURCH
 Sun. Sept. 29th 1985
 Pastor Calvin Stone
 Main-Stouffer
 10 A.M. Sunday School
 11 A.M. Worship Ser-
 vice
 Wed. 7:30 P.M. Prayer
 Meeting

BLOOMINGTON CHRISTIAN GOSPEL CHURCH
 REV. C.W. SORLEY
 9:45 a.m. - Sunday
 School
 11:00 a.m. - Morning
 Worship
 7:00 p.m. - Evening
 Worship
 Wed. 8 p.m. - Prayer
 Meeting

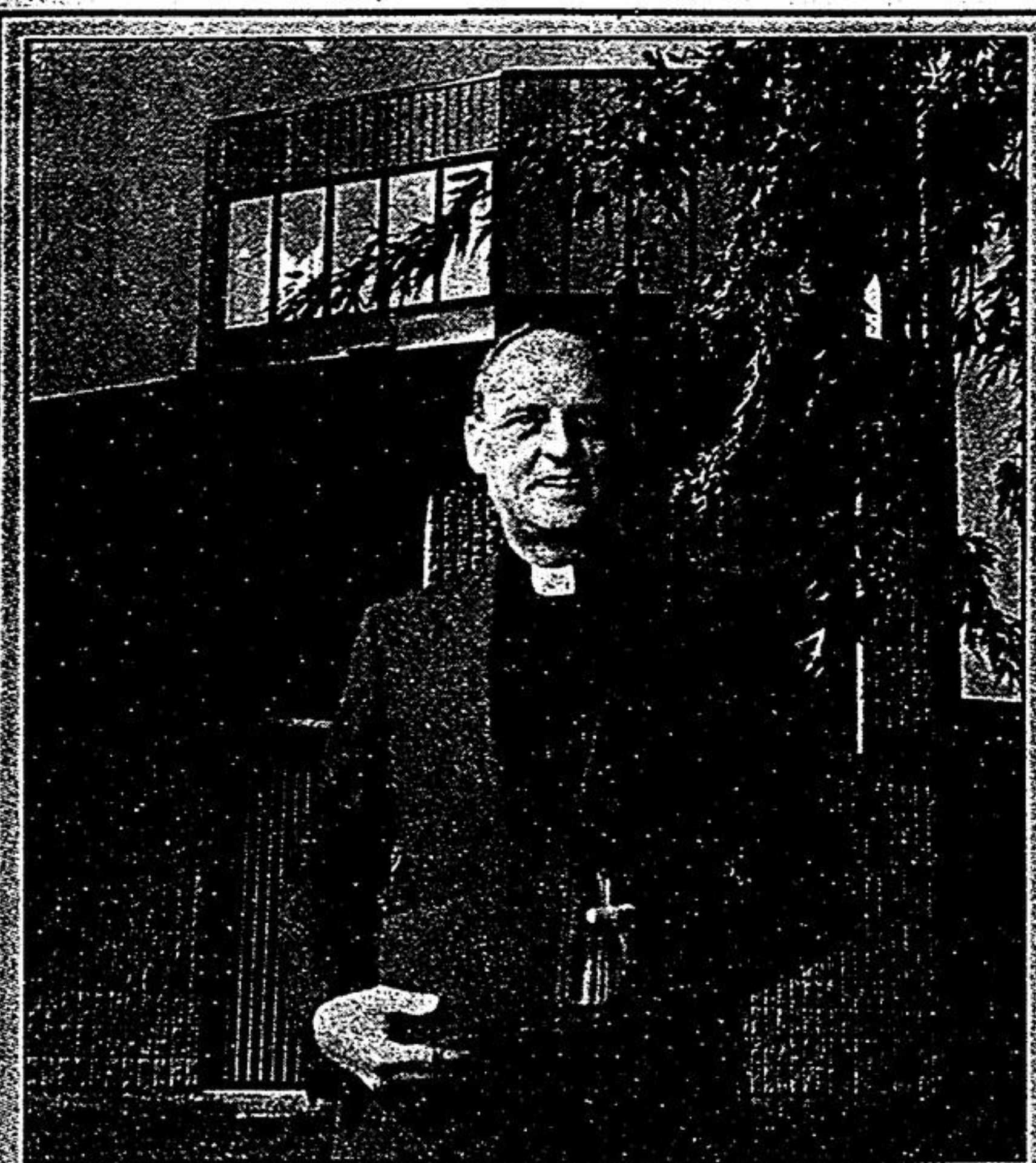
ST. JAMES PRESBYTERIAN CHURCH
 Rev. Herb Gale
 101 Main St. E.
 640-3151
 Sunday, Sept. 29th 1985
 9:45 a.m. - Sunday
 School
 11 a.m. - Worship
 Nursery supervision
 and Junior Church pro-
 vided.

WIDEMAN MENNONITE CHURCH
 Hwy. 48 N. of 17th Ave.
 Phone 640-1227
 Pastor James R. Shantz
 Sun., Sept. 29, 1985
 10:00 am - Worship
 11:00 am - Sunday
 School
 7pm - Film #2 in series
 "The Counterfeits"
 "The Jesus of the Cults"
 Film #3 in Series "The
 Counterfeits"
TRANSCENDENTAL MEDITATION & YOGA
ALL WELCOME

BAKER HILL BAPTIST CHURCH
 On Hwy 48
 2 mi. north of Hwy 47
 Pastor Dana Struve
 9:50 a.m. Bible School
 11 a.m. Morning
 Worship
WEDNESDAY
 7:30 p.m. Prayer & Bi-
 ble Study

GORMLEY MISSIONARY CHURCH
 Sun. Sept. 29th 1985
 9:50 a.m. Sunday School
 11 a.m. Morning Worship
 7:30 p.m. "The Watchmen Quartet"

STOUFFVILLE MISSIONARY CHURCH
 153 Main Street East 640-3911
 Pastor: Rev. James Clabine
 Assoc. Pastors: Douglas Gray
 Charles Mashinter
 Sunday, Sept. 29th 1985
 9:30 & 11:00 am Morning
 Worship
 7:00 PM - Evening Service
WEDNESDAY
 7:00 pm - Family Night
 Pioneer girls, C.S.B. adult & youth
FRIDAY
 7:30 pm - Youth
 "You're Always Welcome at the
 Missionary Church"



Rev. David Bolton of Toronto is presently their interim pastor at Christ Church (Anglican), Stouffville. Rev. Bolton will serve as minister to the congregation until such time as a successor to Rev. Philip Poole is appointed. Rev. Poole has accepted the position of chaplain at Trinity College, Port Hope.

Interim pastor

STOUFFVILLE - Rev. David Bolton considers himself a caretaker pastor or a custodian to the congregation of Christ Church (Anglican) in Stouffville. He's filling the pastoral position made vacant through the recent resignation of Rev. Philip Poole, now the chaplain at Trinity College, Port Hope. While his stay here could extend anywhere from two to six months, Rev. Bolton wants to feel part of the community and the Ministerial. He doesn't plan any changes as far as Christ Church is concerned, he says. Born at Winnipeg, Rev. Bolton received his formal education at Walkerton and Windsor. Currently on leave for study pur- poses his last pastorate was three years ago in Etobicoke. Rev. Bolton says he's impressed with the dedication of the Christ Church congregation, particularly the strength of the lay leadership. With their kind of commitment, he's certain the parish can bridge the gap between permanent pastors. Rev. Bolton said he'd only visited Stouffville on one previous occasion and that was, you guessed it, a trip to the Flea Market. His acquaintance with Rev. Poole, however, goes back to before Phil's ordination. Rev. Bolton's appointment here was authorized by Archbishop Garnsworthy.

AROUND TOWN

PLAN DOG SHOW
 The Scarborough Kennel Club is holding its annual dog show in the (old) Stouffville Arena, Sunday, Sept. 29. Visitors will be welcome.

BALL CLUB TREATED
 Coach Jim White of the Country Stop Burger T-Ball team, treated the players to a barbecue, recently, marking the end of their season in the Whitechurch-Stouffville League. Each boy and girl received a trophy, donated by their sponsor.

RECEIVES SCHOLARSHIP
 Congratulations to 19-year-old Cathy Morin, Elm Road, Stouffville, recent recipient of a scholarship from Texaco Canada Limited. The award will pay her tuition and compulsory fees for four years. Cathy is a first-year student in the Music Degree course, University of Toronto.

LOVELY CEREMONY
 Michael Grove and Janet Hutson were married Sept. 7 in a lovely ceremony conducted by Rev. Jim Clabine in the Stouffville Missionary Church. Michael is the son of Chuck and Betty Grove, Main Street East, Stouffville. Janet is the daughter of Mr and Mrs John Hutson, R.R. 2, Stouffville. The happy couple are now residing on Edward Street, Stouffville.

HONORED AT SHOWER
 Kim Sleeth, Rupert Avenue, Stouffville, was honored at a lovely shower, last week, hosted by Jean Ireland, Winlane Drive. Another shower in Kim's honor will be held Sept. 25, (to-night), at the home of Elsie Jones, William Street, Stouffville. Kim and Scott Renshaw, of Richmond Hill will be married Oct. 19 at the United Church in Aurora.

FROM OTTAWA
 Mrs Joan Avery of Ottawa spent several days with her parents; Mr and Mrs James Ojdham, R.R. 2, Stouffville.

FIGURE SKATING
 Registrations for the Stouffville Figure Skating Club will be accepted at the Rec. Centre, Ninth Line North until Monday, Oct. 7. The telephone number there is 640-6527.

NINETIETH BIRTHDAY
 Mrs Catherine Girling celebrated her 90th birthday, Sept. 18. To mark the occasion, an 'open house' was held at the home of her daughter and son-in-law, Grace and William Burd, Sunday. Mrs. Girling was born on the 'same day' as former Prime Minister, the late John Diefenbaker. Until his death, Mr Diefenbaker always sent her a hand-written personal card stating it was a very special day for them. Mr Girling was a chief engineer on the staff of the Toronto Globe and Mail. Following a short stay at Green Gables Manor, Bloomington, Mrs. Girling went home for a weekend. However, after four years, the 'weekend' still exists. She maintains a senior citizen's apartment in Scarborough.

TO ATTEND INDUCTION
 A bus load of members from the congregation of Christ Church (Anglican), Stouffville, plan to attend a special induction service for Rev. Philip Poole at Trinity College, Port Hope, Oct. 1.

SILVER JUBILEE CLUB
 Edge and Betty Pegg of Claremont will show slides of "Canadian Winter Birds" at a Silver Jubilee Club meeting, Tues., Oct. 15. Musical entertainment for the evening will be provided by The Sweet Adelines Quartette from Scarborough. Refreshments will be served.

"FRECKLES" OPENS
 "Freckles", a gift and specialty shop operated by Sandra Stronah at 4 Main Street West, Stouffville, opens for business this Friday, (Sept. 27), at 10 a.m.

EIGHTIETH BIRTHDAY
 On Sat., Oct. 5, Cliff Burholder will celebrate his 80th birthday. To mark the occasion, an 'open house' is planned at his home from 7:30 to 9:30 p.m. Friends and neighbors are invited.

CHURCH ANNIVERSARY
 The congregation of Ringwood Christian Church will celebrate their 161st anniversary, Sunday, Sept. 29 with special services at 11 a.m. and 7:30 p.m. Guest speaker will be former area resident, Will Lawrenson.

EUCHRE AT VANDORF
 A community euchre will be held in the Vandorf Hall, Fri., Sept. 27, beginning at 8 p.m., with all proceeds going to the Ontario Arthritis Society. Admission, including refreshments, is two dollars. For additional information call 727-2908 or 888-1715.

MICROWAVE CLASSES
 Pat Byer, Tenth Line South, Stouffville is conducting a series of classes for Microwave owners. The second of these is Tues., Oct. 1 at 7:30 p.m. The location is Card's Hardware, Main Street West. The registration fee is \$10.

UNHEARD OF LOW PRICES!

FALL LANDSCAPE SALE!

White Rose

CRAFTS & NURSERY

PEAT MOSS

Fall planting starts with Canada's finest sphagnum moss... Break down heavy clay... Improve water retention capacity of sandy soil... WEED FREE... Great for top dressing your lawn.

SUPER SPECIAL

588

5 CU. FT. BALE
Reg. 9.99

WHILE SUPPLIES LAST!

PREMIER PEAT MOSS TOURBE

DIRECT-TO-YOU FROM CANADA'S LEADING NURSERY

No. 1 Quality Evergreens

Pyramidal Junipers SALE

3 to 4 FT. TALL BEAUTIES
Choose from our entire selection of White Rose container grown landscape plants including: Spartan, Skyrocket, Cologreen.

19⁹⁵

Reg. 29.95

Spreading Junipers

Grown to perfection... Choose from our entire selection of White Rose No. 1 quality spreaders including: Mint Julep, Heidi, Blue Pitzer, Goldcrest and Andora... 12 to 18" wide.

488

Reg. 8.98

SUPER SPECIAL

25% OFF

Shade Trees

FALL IS FOR PLANTING

CHOOSE FROM OUR ENTIRE SELECTION OF WHITE ROSE QUALITY SHADE TREES.

Including:
 CANADIAN RED MAPLE
 SHADEMASTER LOCUST
 JAPANESE CHERRY
 GREENSPIRE LINDEN
 FLOWERING CRAB
 CANADIAN RED OAK

Reg. 18.95 to 39.90

SALE PRICED FROM

14²¹ TO 29⁹²

FLOWERING SHRUBS

FOR COLOUR & PRIVACY PLANT NOW!

It's a fast economical way to a colorful full screen or showy decorative specimen... Spring, Summer or Fall.

Choose from:
 - Potentilla, Forsythia,
 - Bridewreath Spiraea
 - Double Weigela
 - Weigela Bristol Ruby
 - Weigela Abel Carrier

YOUR CHOICE

388

Reg. 4.99 to 6.99

DEVIL'S IVY

Exotic Golden Pothos on a totem pole... Bushy colourful green and yellow foliage growing top to bottom on an 18" sturdy bark post. Accented with a Devil's pick and folied for gift giving.

SUPER SPECIAL

666

Reg. 9.99

20% OFF FALL FERTILIZER

So Green WINTER PRO

6-8-12

10³⁹

Reg. 12.99 to 18 kg 19.99

1/2 PRICE TROPICALS SALE

Add nature's charm to your home or office with our 1/2 Price Decorator Tropical Plants! An outstanding selection at unbeatable prices.

ARECA PALMS & SCHEFFLERAS

3-4 FT. TALL
From the best growers in North America White Rose brings to you finest florist quality lush tropical plants grown to perfection... We Guarantee It!

12⁴⁹

Reg. 24.99

YUCCA CANES

Hardy plants... Ideal for today's modern lifestyle... huge multiple heads of foliage to add a stunning accent to your decor.

19⁹⁹

Reg. 39.99

BOSTON Ferns

Beautiful, huge, lush Boston ferns overflow a 6" Hanging basket... grown to perfection.

288

Reg. 8.99

CRAFT SALE

WATCH FOR THE UPCOMING FALL CRAFT CATALOGUE SATURDAY STARWEEK TV GUIDE!

White Rose

CRAFTS AND NURSERY... SALES LIMITED... OPEN 7 DAYS A WEEK - OPEN SUNDAYS

HOURS: Mon., Fri. 9:00 am. to 8:00 pm.
 Sat., Sun., and Holidays 9:00 am. to 6:00 pm.

UNIONVILLE

No. 7 Highway East of Woodbine Ave.

SALE ENDS OCTOBER 3, 1985. PROFESSIONAL EXCELLENCE... PERSONAL INTEGRITY HAVE MADE US WHAT WE ARE TODAY.