

Museum's classic auto show draws largest field of entries

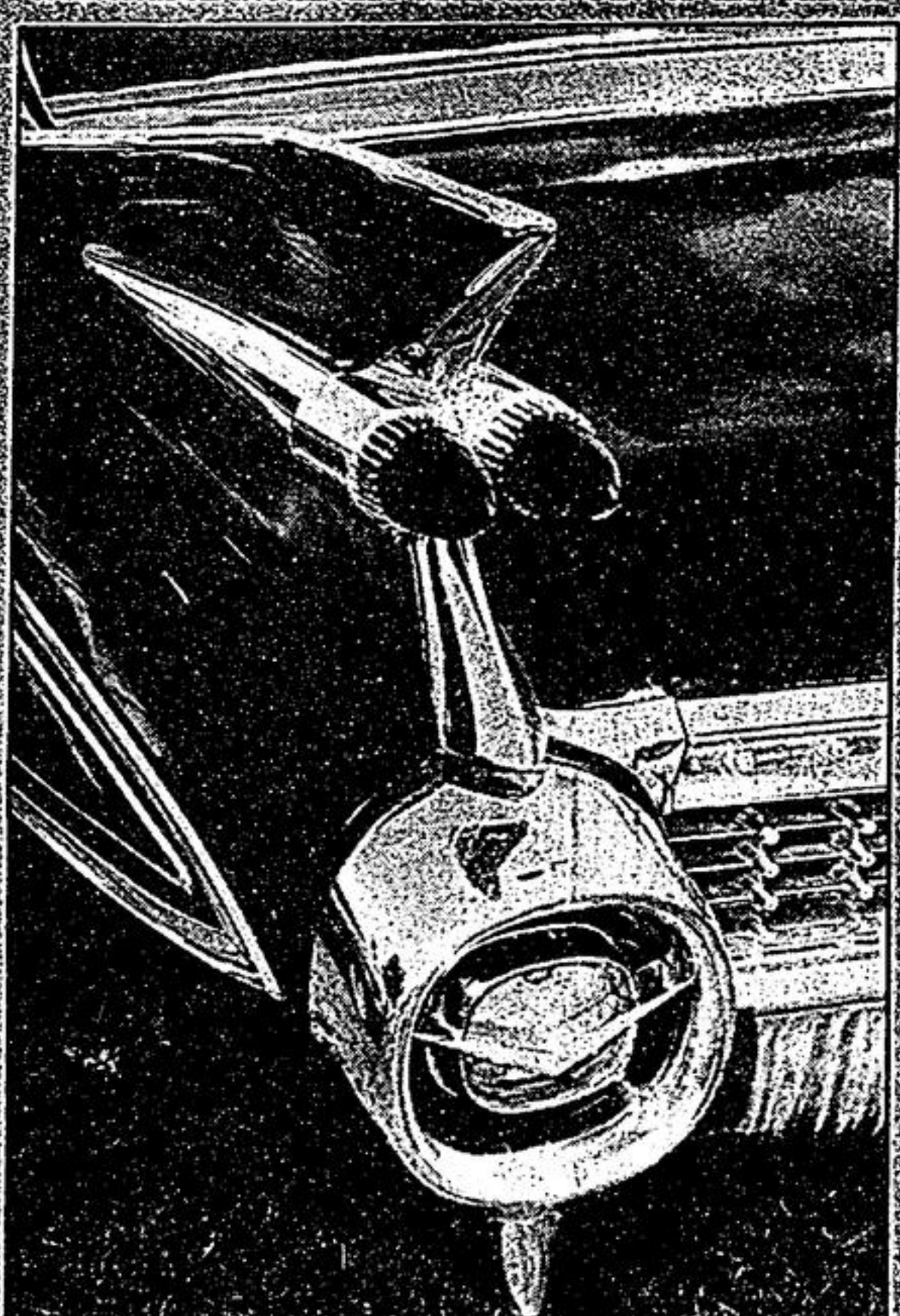


There were a record 126 entries in the annual Antique and Classic Car Show, Sunday, on the grounds of Whitchurch-Stouffville Museum. One of the participants, Norma Daniel of R.R. 2, Stouffville, attempts to start her husband's 1912 Hupmobile.

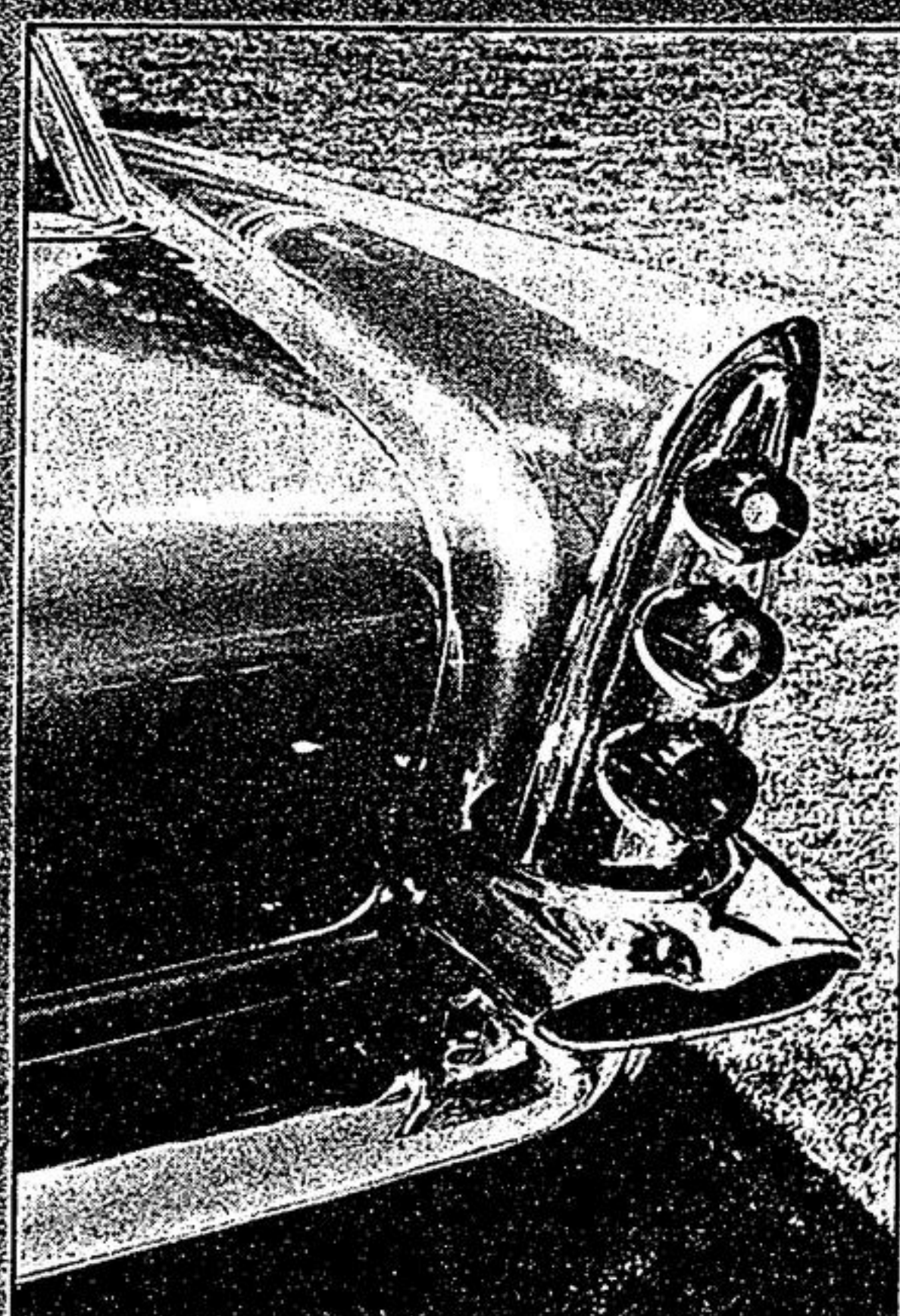


A 1915 Model T Touring, owned by John Brumwell of R.R. 2, Gormley, won the Drivers' Choice award. Mr. Brumwell values his car at \$15,000.

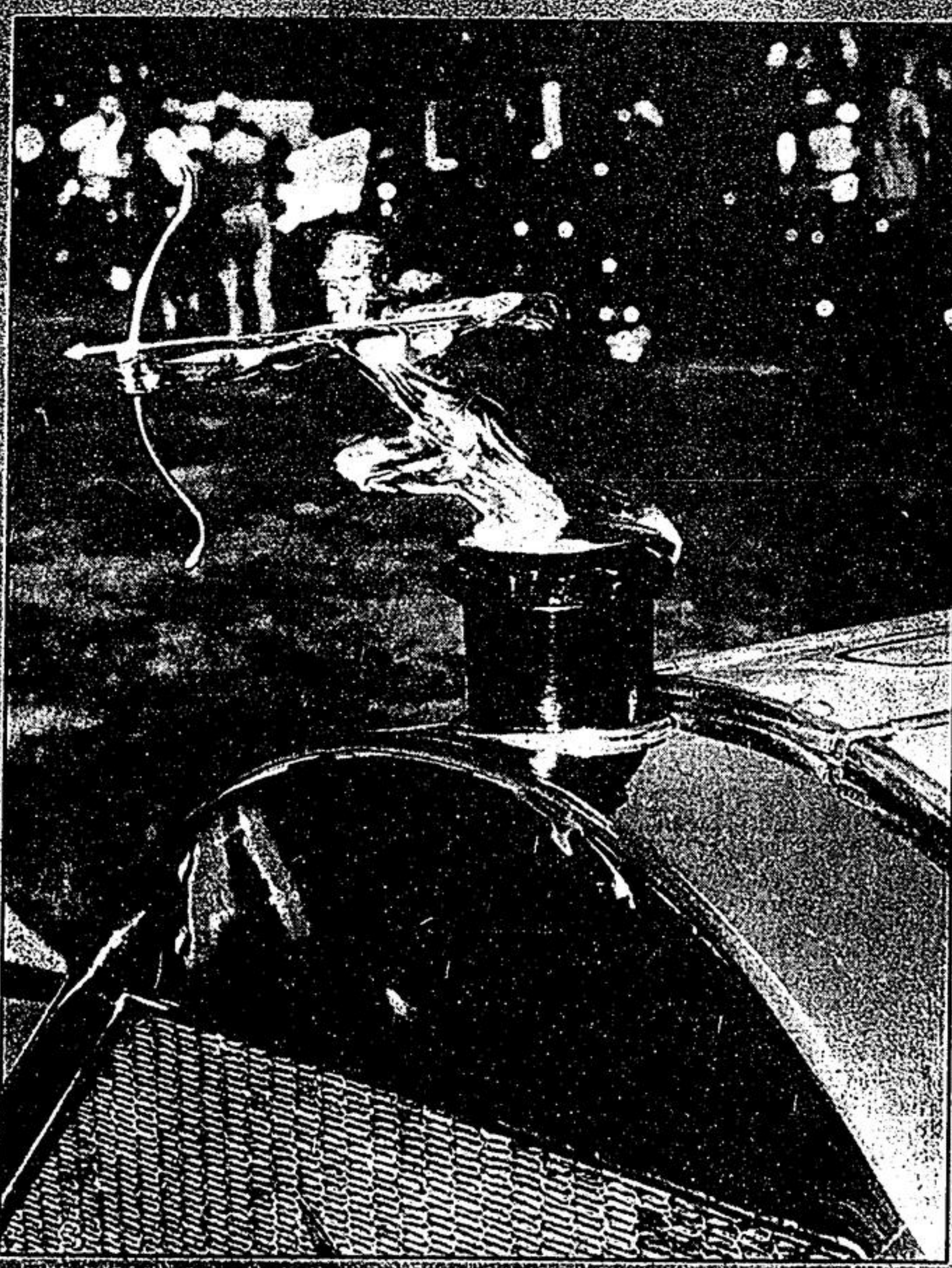
Photos by Jim Thomas



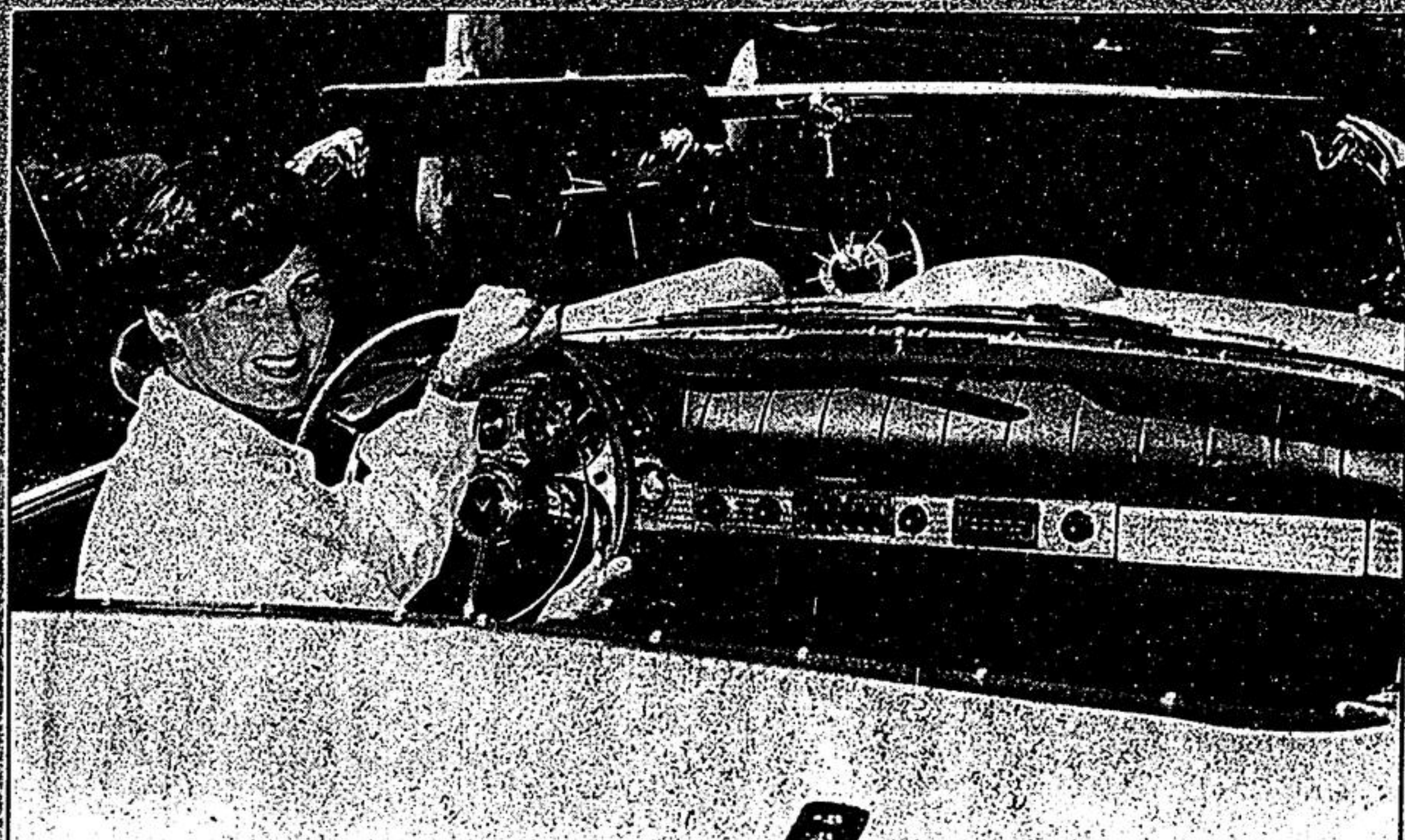
There's no mistaking a 1959 Cadillac by its distinctive tail fin.



The unique back portion of this 1958 DeSoto drew many glances from interested visitors at the museum-sponsored show.



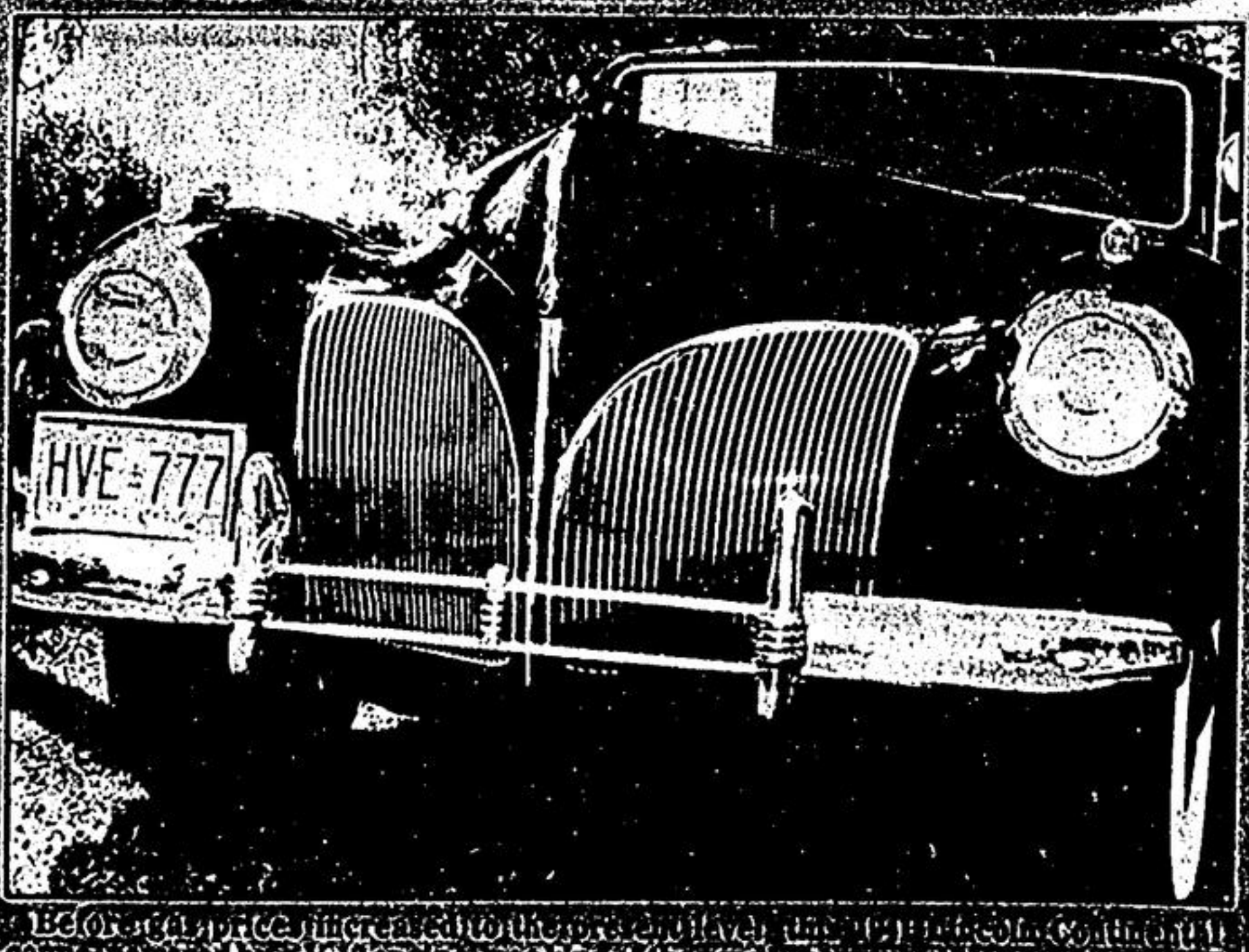
This attractive hood ornament belongs to a 1927 Pierce Arrow, owned by John Bosworth (Cedar Valley, R.R. 3, Newmarket).



Diane DeToro of Craigmont Drive, North York, sits behind the wheel of her husband's 1957 Thunderbird.



Newmarket's Ed Hurd is proud of his 1957 Corvette, one of the few he's ever owned and many admirers.



Before its price increased to the present level, the 1914 Ford Continental coupe, powered by a V-8 engine, was king of the road. It's owned by Harry Johnson of Toronto.