

A PRICKLY SITUATION  
watercolour by PIE

**The Keirstead Family  
of Artists**

Original Watercolours by PIE MENGER  
Oils and Limited Edition Reproductions by  
COLEBROOK and MITCH KEIRSTEAD  
Reproductions by JAMES L. KEIRSTEAD  
Collector Plates, Oak Plate Frames  
Art Consultation

**THE  
MENGER GALLERY**

Stouffville Rd., Between Hwy. 404 & Woodbine Ave., Gormley

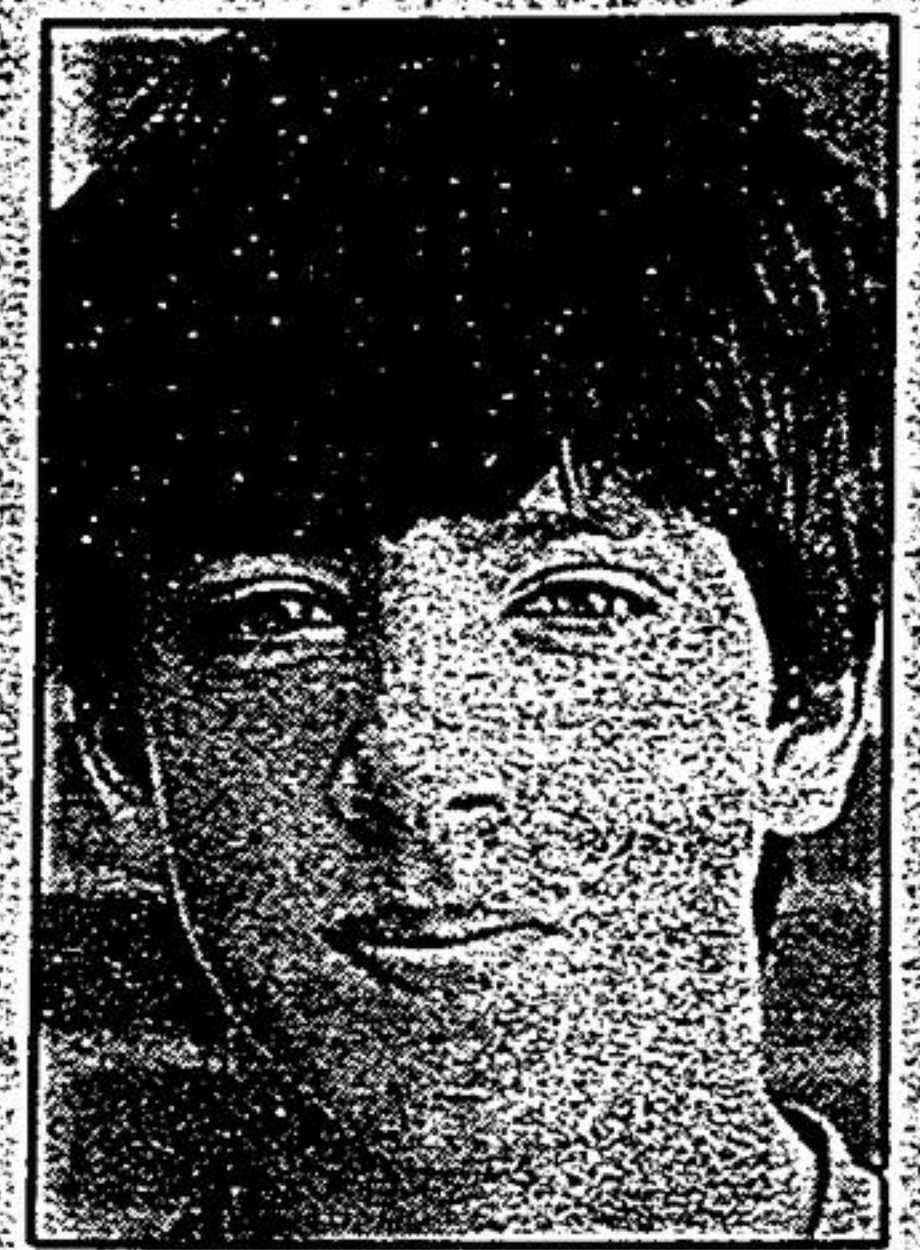
Tues. - Fri. 1 p.m. - 9 p.m.  
Closed Monday

**887-5795**

Saturday 10 a.m. - 5 p.m.  
Sunday 1 p.m. - 5 p.m.



GREG ROSS  
Loved the sports



BRAD WILLIS  
Boys overfed

**Local Scouts  
at Jamboree**

By BRENDA LITTLE  
Although they're sleeping in warm beds now, two Stouffville youths weren't quite so comfortable during the recent Boy Scout Jamboree near Guelph.

From July 2 to July 12, the Brad Willis and Greg Ross, along with about 10,000 other young troopers from across Canada, sacrificed the comforts of home to live in a giant tented city near Guelph.

The event was the 1985 Canadian Boy Scout Jamboree. For 10 days, Boy Scouts from across Canada were united in various sporting events and educational workshops.

From 6 a.m. to 11 p.m. every day, the boys engaged in activities of their choice.

Sporting events at this year's Jamboree included canoeing, water basketball, water soccer, battle-axing and jousting. The workshops included kite-making, woodburning and computer studies.

The jousting match was a battle between two patrols of boys in which one member of the each squad sat in a wooden cart pulled by his other team members and tried to stab his opponent with a flexible pole cushioned on the end by a pillow. This revival of an old Roman tradition was Brad's favorite.

Brad also enjoyed meeting people from different provinces and the independence he felt camping without his parents.

Greg liked making new friends from other towns, cities and provinces. "I now have a friend from British Columbia," says Greg.

"We're going to be pen pals." Greg's favorite activity was kite-making.

"I really enjoyed it, even though my kite wouldn't fly," he chuckled.

Both boys agreed the worst part of the Jamboree was the cold water showers.

Greg also felt the get-together could have been better organized.

"We could only pre-register for two of the workshops," he explained. "For the others, we had to line up. Sometimes we waited half an hour."

The boys certainly didn't have to wait for food. Both Greg and Brad admit they were overfed.

"One day our patrol of nine was given nine loaves of bread and seven tubs of margarine," said Greg.

"On the last afternoon we also were given about 50 donuts to share among eight people," added Brad. "Of course we managed to eat them all."

Provincial pins were almost as abundant as food. They passed from hand-to-hand as the Scouts followed the trading tradition. Each one wanted a memento to take home.

The trip back to Stouffville was much easier on Greg and Brad than the journey to Guelph. Going home they travelled by car the entire way. They hiked part of the way to the site. In total, the two boys, along with the Mt. Albert Scout Troop, walked 45 kms. They left home June 30 in order to make it on time.

In spite of tired feet, both Greg and Brad want to go to the next Jamboree at Prince Edward Island in 1989.

**QUALITY  
meats**  
**Victoria Square  
Country Meats Inc.**

WOODBINE AVE. - (3 MI. N. #7 HWY.)

★★★★ 887-5804 ★★★★★

**BETTER THAN EVER QUALITY!**

**BEEF • LAMB • VEAL • PORK**

- ★ CUSTOM KILLING
- ★ FREEZER ORDERS
- ★ NATURAL CURING
- ★ HOMEMADE SAUSAGE
- ★ SUCKLING PIGS
- ★ BARBECUE RENTALS
- ★ CHEESES
- ★ DELI MEATS



**HOURS:  
CLOSED MONDAY**

TUES. .... 7 A.M. to 6 P.M.  
WED. .... 7 A.M. to 6 P.M.  
THURS. ... 7 A.M. to 6 P.M.  
FRI. .... 7 A.M. to 9 P.M.  
SAT. .... 7 A.M. to 5 P.M.

**WEEKLY SPECIALS**

• JOHN FULLER  
MANAGER

**CARIDE & KIMMERLEE**

Computerized and Manual Bookkeeping  
and Accounting Service  
Small Business is our Specialty

**475-9676**



**Ballantrae & District  
Lions Club**

**HORSE  
SHOW '85**

— THIS WEEK —

*Sunday, July 21st*

Equitation - Hack - Hunter Class  
Ballantrae Community Centre - 1/2 Mile East of Hwy. 48

For More Information Call: 640-3965 or 727-2908