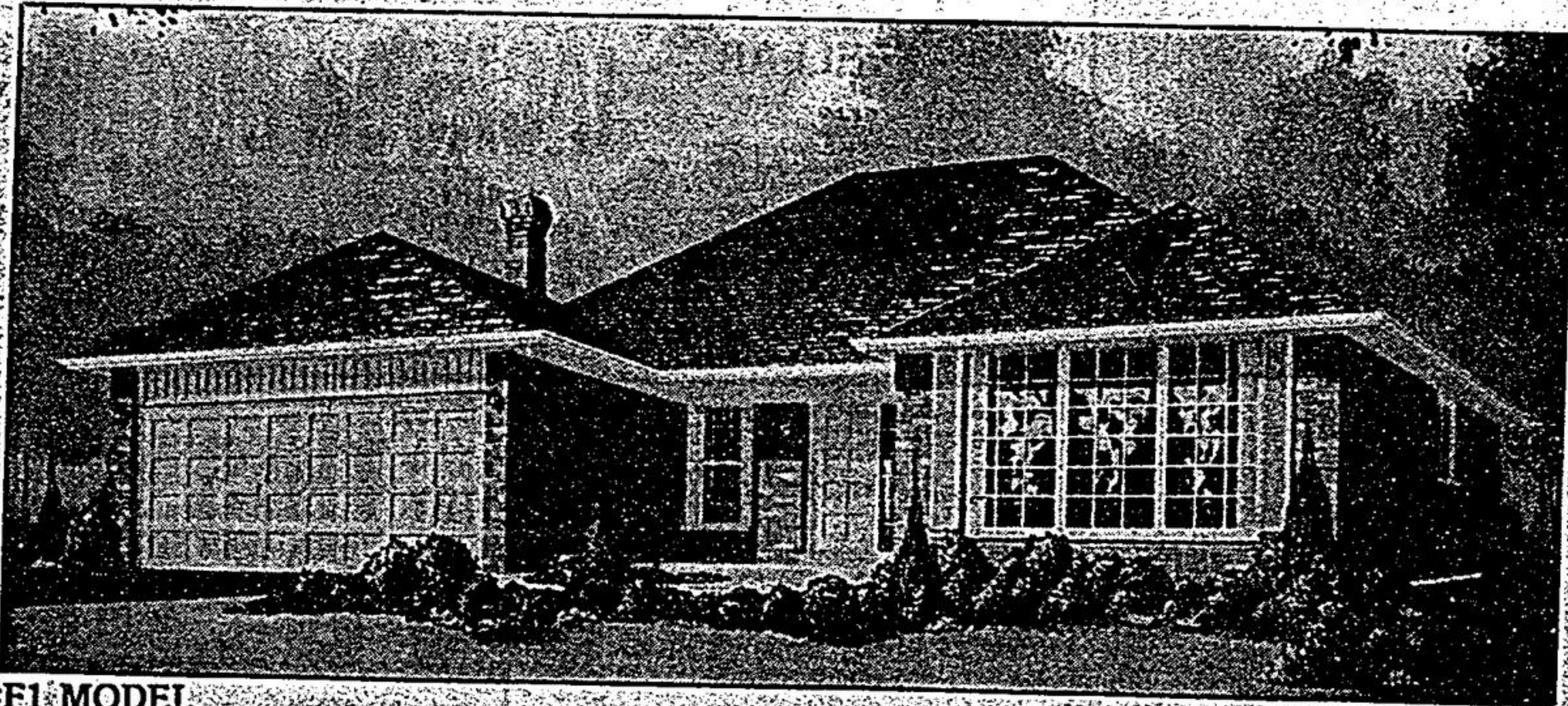


# FAIRGATE HEIGHTS STOUFFVILLE

**3RD PHASE NOW UNDER CONSTRUCTION  
38 MORE HOMES AVAILABLE**



F1 MODEL

\$109,900

**HOMES STARTING AT \$109,900.**

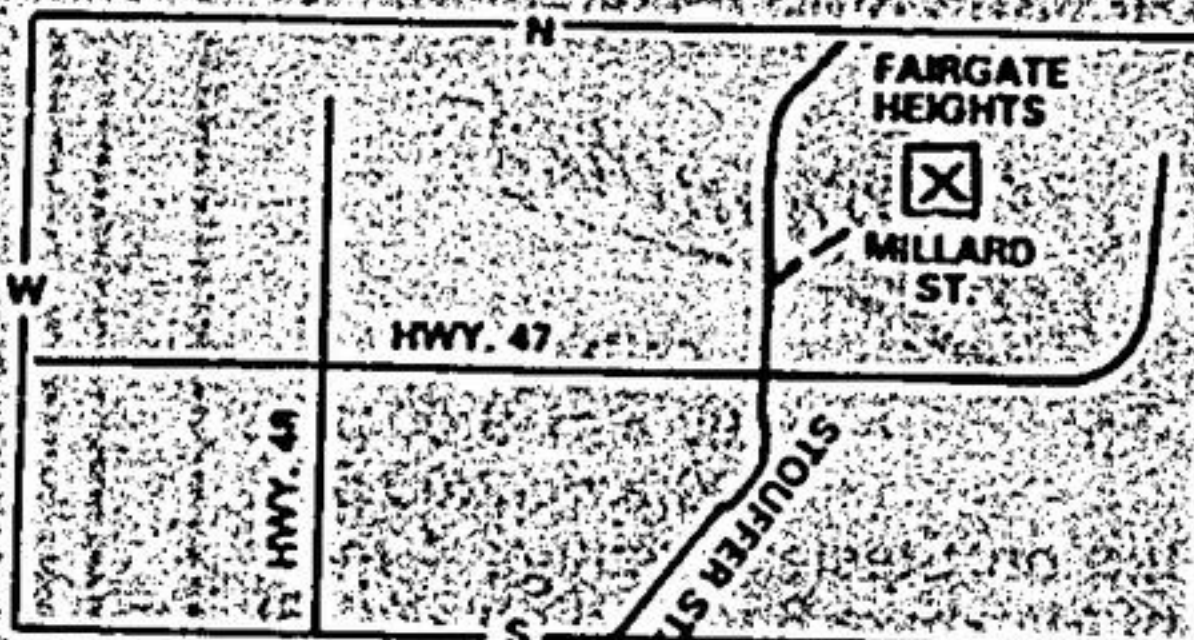
**50' LOTS  
11 1/4% FIRST MORTGAGE  
3 YR. TERM  
Carries like rent  
BUNGALOWS & 2 STOREYS  
AVAILABLE**

Choose one of our 6 models or  
have your home custom built to your taste.

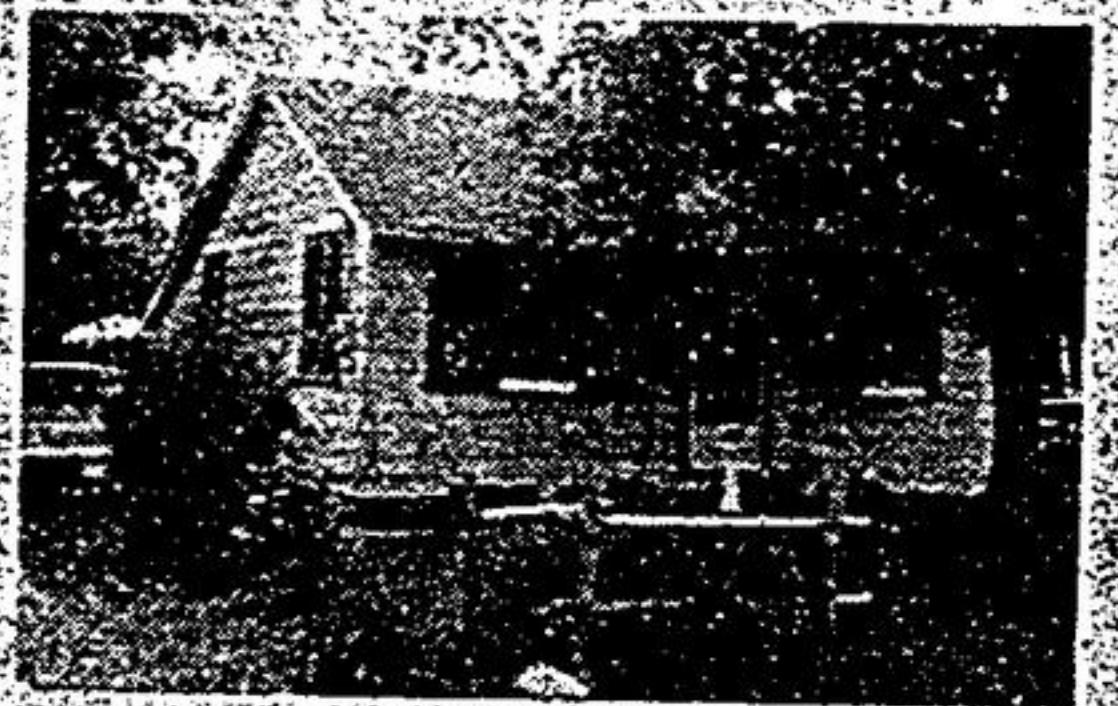
Open: Weekdays noon to dusk  
Sat. & Sun. 10 a.m. to dusk  
For information call Jenny Ronco or Lina Ronco  
640-5307 days or 497-9654 evenings  
**CANDO REAL ESTATE**

### FEATURES

- Clay brick
- Oak Staircase & railings
- Brick fireplace in main floor family room
- Mahogany trim or Series 800
- Ceramic tile in front entry & bath



(Toronto Direct) 640-4151  
(Mt. Albert) 473-3500  
**Farguharson** REALTOR  
114 Main Street West, Stouffville, Ontario L0H 1L0  
SERVING OUR COMMUNITY SINCE 1954



### WHY PAY RENT?

2 bedroom home located 3 mi. north of Stouffville. Included eat-in kitchen, pine floors, woodburning stove, 50x100' treed lot, detached garage. A pleasure to show. Asking \$56,500. Call Bev Sefton 640-4151.



### STOUFFVILLE IN TOWN

\$89,900. Board and batten exterior enhances this charming home. Interior includes 3 bedrooms, 2 baths, living room, den and extra large kitchen, 300' deep, treed lot allows privacy. Call Bev Sefton 640-4151.

### 2400 SQ. FT. HOUSE VIEW

Markham — 8 miles N/E. 9.6 acres. Exceptional value. Too much to describe in this ad. For all details and description please call Peter 640-6777. Only \$219,000.

\$85,500  
3 bedroom brick bungalow in A-1 condition. Attached garage, 80x100 treed lot, chain link fence, includes separate dining, cut stone fireplace, finished family room with bar, Workshop and laundry room. Stouffville area. Call Bev Sefton 640-4151.

## Phase II

REAL ESTATE LIMITED REALTOR

CALL  
Newmarket.....888-7533  
Toronto.....888-1290



### MARATHON OPEN HOUSE

9 AM - 9 PM  
SAT. & SUN JULY 6 & 7  
9 ESTYNE CRT. BALLANTRAE

Hwy #48 to Felcher (first street south of the Aurora Sideroad on the east side). Follow signs. Owner is building, wants an offer. Beautiful sidesplit on 1/2+/-, 6 yrs old, 2200 sq. ft. of living space, 4 bedrooms, 3 baths, large eat-in kitchen, finished family room, double car garage and much much more. \$138,900. Must be seen. Betty Gutormson, Phase II Real Estate 888-1290, 1-800-263-2091 #493.

Oct. Occupancy — Top of Hwy. 404

**Preston Lake Estates**  
Country Estate Homes

**3/4 ACRE LOTS**



**Brillinger**

2,530 SQ. FT.

Preston Lake Estates is a unique community of 29 lots adjacent to a 75 acre spring fed lake just outside of Metro Toronto, only 15 minutes north of Highway 401. Lots range from 3/4 to 1 1/2 acres with over 100 foot frontages. House prices start from \$184,000 with six models, (five two storey and one bungalow) ranging in size from 2330 to 3010 sq. ft. Travel north on Hwy. 404 to Bloomington Road, go east just past Woodbine to site office open Friday, to Sunday afternoons, open Holiday Monday or by appointment Monday to Thursday 888-1110.

**KELLY AND KRAAG LTD., REALTOR, 493-2311**

**Family Trust Ltd.**  
FAMILY TRUST CORPORATION

8 Wellington Street West  
Markham, Ontario L3P 1A2

**Guaranteed Investment  
Certificates**

**11%**

5 year term  
30 days to 5 year rates  
available on request

**294-1372**

Ext. 273

\* Rates subject to change  
Member: Canada Deposit Insurance Corporation

## CLASSIFIEDS

Economist and Sun **294-2200**  
The Tribune **640-2100**

**FOR FAST RESULTS**

**MARKHAM**  
2 storey all brick house, 3 bedrooms,  
double garage, 4 years old. \$92,500.  
Call:  
294-0823