

June is seniors' month to shine

June is Senior Citizens Month in Whitechurch-Stouffville. Activities geared to seniors commence Wednesday (June 5) and continue through Sunday (June 30). All events are free of charge. The committee chairman is Mayor Tom Wood. The schedule follows:

WED. JUNE 5 - Worship service in Christ Church (Anglican) at 11 a.m. with refreshments to follow. Contact persons are Jean Anderson, (640-1417) and Win Napier, (640-2946).
THURS. JUNE 6 - Film at the Town Library entitled "My Fair Lady" Time 2 p.m. with refreshments to follow. Contact person Barbara

Smith, (640-1974).
TUES. JUNE 11 to **FRI. JUNE 14** - Open House at the Silver Jubilee Club, 1:30 to 4 p.m. Refreshments. Contact persons are Syd Cooper, (888-1260) and Nola Porter, (640-3613).
WED. JUNE 12 - Musical Concert at Christ Church beginning at 8 p.m. Participants

are Jr. Choir of the Missionary Church; Jr. Choir, Orchard Park School; trumpet player Geoff Tiller and vocalist Judy Steckley. Contact persons are Jean Anderson, (640-1417) and Win Napier, (640-2946).
TUES. JUNE 18 - Bus Trip to Cullen Gardens. Pick-up time at the Silver Jubilee Club, Green

Gables and Parkway Home, 6 p.m. Contact persons are Vera Moyer, (640-1386) and Jean Anderson, (640-1417).
THURS. JUNE 20 - Film "On Golden Pond" at the Town Library 2 p.m. Refreshments to follow. Contact person Barbara Smith, (640-1974).
MON. JUNE 24 -

Strawberry Festival at Green Gables, 2 to 4 p.m. Contact person Vera Moyer, (640-1386).
WED. JUNE 26 - Band Concert in the Stouffville Park at 7:30 p.m. Bring own lawn chairs.
THURS. JUNE 27 - Barbecue at Parkway Home beginning at 5:30 p.m. Entertainment by The Cadieux Family.

Contact persons Sheila Jones, Lorna Hogg and Arlene Raymer, (640-1911).
SUN. JUNE 30 - Sr's. Worship Service at Parkway Home beginning at 6 p.m. Persons requiring transportation are asked to call Home Support Services at 640-6554 between 9 a.m. and 1 p.m.

STOUFFVILLE QUALITY JEWELLER
Bartholomew
JEWELLERS STILL ON MAIN ST.
24 MAIN ST., STOUFFVILLE 640-4648

The Tribune

Serving Whitchurch-Stouffville, Uxbridge & Area

Counrye Tyme Realty Ltd.
MAKE A SMART MOVE LIST WITH THE "COUNTRY FOLK"
649-5090 640-5090

VOL. 98, NO. 4 A Metroland Community Newspaper Wednesday, June 5, 1985 40 pages 50 cents

Tornado scene 'unbelievable' says witness

DICKSON'S HILL — "Unbelievable." That was the only word veteran ambulance operator Bill Keeping of Dickson's Hill, (R.R. 2, Markham), could describe the devastation that met his eyes on arrival in Barrie Friday afternoon.

Keeping, in charge of a Response Unit with the Metro Ambulance Service, was dispatched to the tornado scene from a depot at Yonge Street and Sheppard Avenue, North York.

Minutes before the call came in, he recalled switching on a TV monitor at the station and tuning in the Barrie channel. When there was no response, he sus-

Art exhibit by Cranston

STOUFFVILLE — Toller Cranston, the artist, comes to Stouffville Thursday (tomorrow) night.

This distinguished personality, known best for his prowess in skating, will display his artistic side at a ceremony in Latcham Gallery, (Town Library), 7:30 to 9:30 p.m.

Damage

Mervin Hie, Spring Street, Stouffville, knows something of the devastation in the Orangeville area.

Price lowered on clubhouse

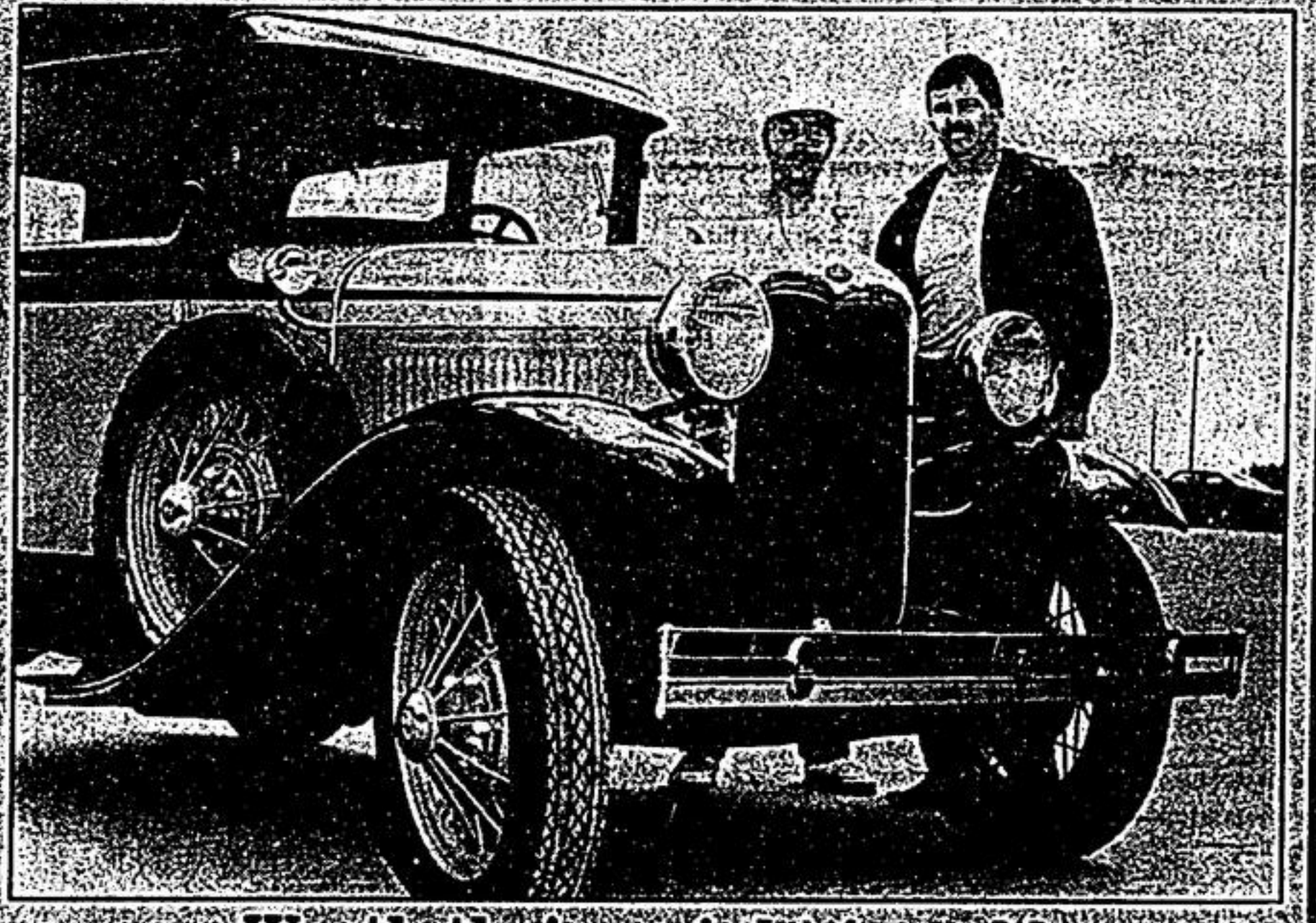
STOUFFVILLE — A price tag of \$100,000 has been placed on the Silver Jubilee Clubhouse in Stouffville.

The valuation was received Friday by Mayor Tom Wood.

Clean-up
STOUFFVILLE — A Saturday Clean-Up Day in Stouffville is being held on June 8, from 9 a.m. to 12 p.m. People will meet at the (old) area where committees are collecting for the event.



The Stouffville Christian School hosted its annual Spring Fair in the Town Park Saturday. A feature attraction was an auction that included several classic cars and a truck, owned by Denny Alsop. This 1956 Ford custom pick-up was purchased by Jim Duggan, R.R. 4, Stouffville, for \$7,200.



Worth their weight in gold
This 1930 Model A Ford, also owned by Denny Alsop, (left) was purchased by Ralph Cooper of Stouffville for \$8,000. Mr. Alsop donated a large portion of the sale receipts to the Stouffville Christian School. Jim Thomas

'Neigh' to horses

WHITCHURCH — In recent years, the rural area of Whitchurch-Stouffville has become 'horse country'. Unfortunately, certain areas

where horses are kept aren't exactly rural. Their presence are causing problems and members of Council are receiving com-

plaints. For example, one resident is accommodating six horses on a single acre.



Proud pastor, receives Town crest
Expansion of facilities at Stouffville Pentecostal Church, Main Street East, was celebrated Sunday with special services morning, afternoon and evening. Prior to dedication, Mayor Tom Wood, (right), presented a Town crest to the congregation's pastor, Rev. Craig Pitts.

Artist donates painting

STOUFFVILLE — The Bunker Farm, Ninth Line, Markham, has been memorialized through the brush of Stouffville artist Jim Bessey, Booth Drive.

The beautiful painting will hang in the Markham-Stouffville Hospital, a tribute to the generosity of the late Harvey Bunker, long-time resident on the property. Mr. Bunker died Feb. 29, 1984, at Green Gables Manor, Bloomington. In his will, he bequeathed an amount in excess of \$500,000 to the Hospital Building Fund.

Church expands

PINE ORCHARD — While many rural area churches have experienced difficult times in recent years, the congregation of Church of Christ, Pine Orchard, has just completed a sizeable addition plus other renovations.

The cost has been estimated at \$65,000.

To celebrate completion of improved facilities, a dedication service will be held this Sunday (June 9) at 2 p.m., followed by an open house, and refreshments at 3:15.

The church's location is west side of the 5th Concession of Whitchurch-Stouffville, south of the Vian Road.

The addition includes classrooms for Sunday School, washrooms and a kitchen. The main building has also been remodelled and the parking lot improved.

History of Pine Orchard Church of Christ dates back to 1916. Previously, services were held in area homes, a practice started by the late Wesley Lundy back in 1904.

The 2 p.m. service this Sunday is 'special'. Regular worship is at 11 a.m., with Sunday School at ten.

Meeting
MURRAY — A public meeting will be held on June 10, 7:30 p.m. at the Murray Community Centre, 100 Main Street, Murray. The meeting is open to all and will discuss the proposed expansion of the Murray Community Centre.