

## NOTICE TO ALL RESIDENTS OF THE TOWN OF MARKHAM

### NOTICE OF THE PASSING OF A ZONING BY-LAW BY THE CORPORATION OF THE TOWN OF MARKHAM

TAKE NOTICE that the Council of the Corporation of the Town of Markham passed By-law 171-85 on the 14th day of May, 1985 under Section 34 of the Planning Act, 1983.

AND TAKE NOTICE that any person or agency may appeal to the Ontario Municipal Board in respect of the by-law by filing with the Clerk of the Corporation of the Town of Markham not later than the 18th day of June, 1985 a notice of appeal setting out the objection to the by-law and the reasons in support of the objection.

An explanation of the purpose and effect of the by-law, describing the lands to which the by-law applies, and a key map showing the location of the lands to which the by-law applies are attached. The complete by-law is available for inspection in my office during regular hours, Monday to Friday, 8:30 a.m. to 4:30 p.m.

DATED at the Town of Markham this 17th day of May, 1985.

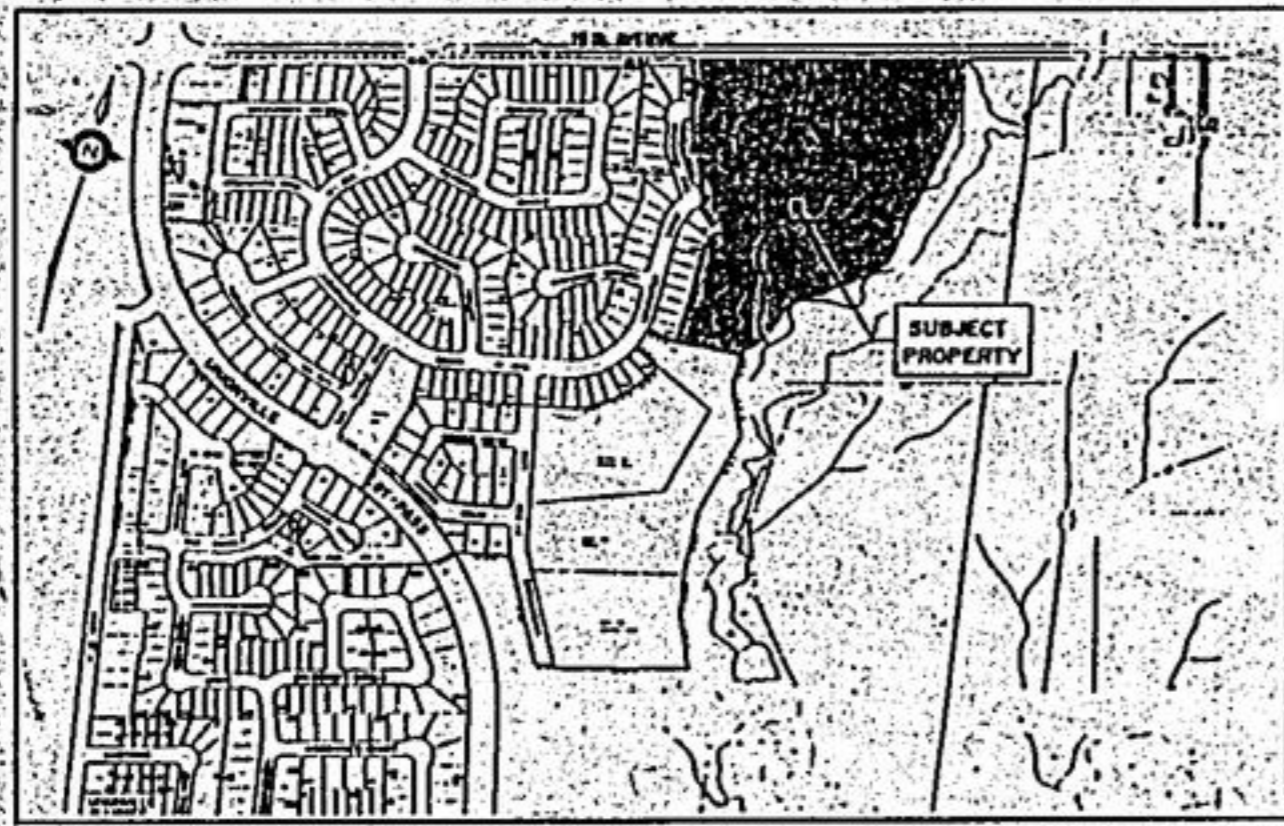
Explanatory Note:  
By-law No. 171-85  
Amending By-law 125-85  
Part of Lot 15, Concession 6 - Monarch Construction Limited (19T-79029)

This by-law applies to a 9.44 hectare parcel of land on the south side of 16th Avenue approximately 330 metres east of its intersection with Longwater Chase.

A plan of subdivision for the subject lands has been draft approved by the Region of York. The lands are zoned Simple Family Residential Third Density (R3), Single Family Residential Sixth Density (R6), and Single Family Residential Eighth Density (R8) by By-law 134-79, as amended.

The subject lands were inadvertently included within the area covered by By-law 125-85, which is an Interim Control By-law intended to apply to lands presently covered by By-law 2325-68 south of 16th Avenue and west of 9th Line.

The purpose of this by-law is to delete the subject lands from the area covered by Interim Control by-law 125-85. The current approved zoning under By-law 134-79, as amended, will continue to apply.



# MARKHAM



### Town receives Music Mania memento

In recognition of Town assistance through the years and in memory of its 25th anniversary, the cast of Music Mania '85 presented a framed autographed poster to Mayor Tom Wood and members of Council, May 14. The presentation was made by Suzanne McNair on behalf of the Stouffville United Church Couples Club. Don

and Suzanne McNair are co-presidents. Mayor Wood thanked Suzanne for the memento and promised to hang it in an appropriate location within the Whitchurch-Stouffville municipal office.

—Chris Shanahan

## Shur-Gain to open dairy research centre on farm near Maple

Bob Selvage, Vice-President and General Manager of Shur-Gain Division, has announced construction of a new Dairy Research Centre at the Shur-Gain Research Farm in Maple.

The facility will cost approximately \$885,000 and will include a milking barn, maternity and calf barn, heifer barn and a hay barn as well as three vertical silos for haylage, corn silage, and high moisture corn. In announcing the new facility to be opened in the Spring of 1985, Mr. Selvage said "it is our desire to remain in the forefront of dairy nutrition research and to do so our research people require adequate facilities."

Describing the details of the new complex, Bob Robson, Manager of the Shur-Gain Research Farm, explained that the milking barn is 42' x 232' using a tie stall system for the milking herd of 90 cows. The maternity and calf barn is 42' x 160' and the heifer barn is 42' x 176'. All barns will be single storey using a concrete sandwich type of construction for the side walls with steel clad wood framing above the concrete side walls.

"We plan to introduce the batch-calving concept which will provide a significant number of cows (30) calving within a 6 week period, to properly conduct nutrient utilization studies with all (30) animals in the same stage of lactation. We will have three such calving groups per year, a total of 90 head of milking age females," said Mr. Robson.

Dr. Evans emphasized the considerable work which has yet to be done in the area of feed metabolism and how this new facility will allow researchers to extrapolate to conditions other than those imposed in specific trials, thus providing the best possible information and service to dairy producers across Canada.

When asked about the cost of producing milk, Bob Robson pointed out that "our overall feed cost is exactly two times what it was ten years ago and that our return from milk is 2.06 times that of ten years ago." But costs in 1975 represented 62.4% of total returns from milk, whereas they now represent 55.6%, an improvement of 11%. He then explained that the new Dairy Research Centre would require additional quota, base and 5 full time people.

The Shur-Gain Research Farm is one of the essential links between the Company's Corporate Research Centre and livestock producers across Canada. The other major link is the network of Shur-Gain Service Centres whose franchise gives them the opportunity to pass on the advantages of the research to their customers.

The Shur-Gain Farm is 490 acres comprising Research and Demonstration centres for swine, turkeys, laying hens, chicken broilers and beef cattle in addition to the new Dairy Research Centre.

### ROSE BUSHES



3 BUSHES  
\$15<sup>00</sup>

### HANGING BASKETS



A WIDE VARIETY OF OUTDOOR HANGING PLANTS WITH BEAUTIFUL BLOOMS PATIENTS, BEGONIAS, PETUNIAS, FUSCHIAS AND MANY, MANY MORE

\$7<sup>95</sup>

## Colangelo Bros. Nurseries and Garden Centres

### SPECIALS

MAY 15 TO 22 INCLUSIVE

### FLOWERS

PETUNIAS, MARIGOLDS, ALYSSUM, SALVIA, ETC.



99¢  
BOX

### IMPATIENS & BEGONIAS

\$1<sup>29</sup>  
BOX

3024 KENNEDY RD.  
(JUST NORTH OF FINCH)

299-1775

### PANSIES

BEAUTIFUL ARRAY OF COLOURS TO CHOOSE FROM



69¢  
BOX

### VEGETABLE PLANTS

PEPPERS, TOMATOES, AND THE LIST GOES ON & ON

\$1<sup>19</sup>  
BOX

2380 MIDLAND AVE.  
(JUST SOUTH OF SHEPPARD)

293-9064

### GERANIUMS

EXCELLENT SELECTION



\$1<sup>29</sup>  
4" POT



### GLOBE CEDARS

REG. \$14.95

NOW \$10<sup>95</sup>

### EVERGREEN SALE

BRING IN THIS AD AND GET

25% OFF ON ALL EVERGREENS

### SERVICE DIRECTORY ADS

#### GET RESULTS!

TO PLACE YOURS, CALL TODAY  
294-2200 or 640-2100

Under Instructions Received From Estate Managers:  
\$200,000.00 INVENTORY OF STEREO, VIDEO, T.V.'s  
CLOCKS, WATCHES, 10-14 K GOLD CUSTOM & DESIGNER  
DIAMOND & GENUINE STONE RINGS, ESTATE PCS, CRYSTAL

Will be sold by:  
**PUBLIC AUCTION**

RAMADA RENAISSANCE HOTEL  
2035 KENNEDY RD. (Scarborough)  
(401 & Kennedy Rd.) SALON A

SUNDAY MAY 26th  
Sale Time 1:30 P.M.  
Preview From 11:30 A.M.

Partial Listing:  
JEWELLERY: 14kt Gold Diamond & Genuine Stone Rings  
valuing to over \$5000.00 ea. w/certificates, Gold Chains,  
Bracelets, Diamond Earrings, Pendants, Estate Rings GP Bulova  
Swiss Watches, SEIKO LaSalle, Pen Sets, Pocket Watches,  
Gents Socktars Rings, FW Pearl Bracelets  
COLLECTOR: Lge. Selection Collector Plates by: Royal Cop-  
penhagen, Lisa Calvert, Norman Rockwell, Goebel Fashion  
On Parade Ser., Royal Doulton, N.F. Figurines, Fine Bone  
China, Czech, Poland, German Hand Cut Crystal  
MISC: HITACHI & SANYO Video Machine, Col. TV, 35mm  
German Camera, Cocks, Port, Radios, Walkmans, Stereo  
OVER 500 ITEMS TO BE SOLD - DEALERS WELCOME  
TERMS: \$100.00 Cash Deposit Bal. Cash Known Chq. CC  
SALE CONDUCTED BY:  
M. FLEISHMAN & SONS AUCTIONEERS  
249-9542

## 21st CENTURY IS COMING!

TO WHITCHURCH-STOUFFVILLE

### ARE YOU READY?

FOR INFORMATION CALL  
731-5601