

Countrye Tyme Realty Ltd.

12 MAIN ST. E. STOUFFVILLE, ONT.

IF YOUR HOME IS NOT BECOMING TO YOU... YOU SHOULD BE COMING TO US!

We are experiencing a demand from prospective buyers looking for a variety of properties... in-town residences, country building lots, estate residential and small farm operations. Thinking of selling - We're ready when you are.

Countrye Tyme Realty Ltd., Realtor Stouffville 640-5090



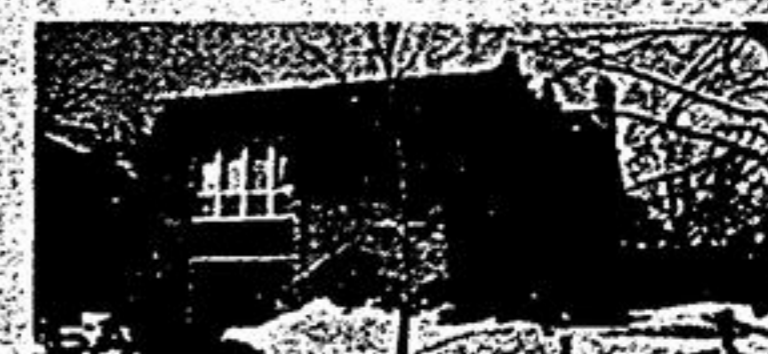
BEST OF BOTH WORLDS
Country living in a residential atmosphere. 3 or 4 bedroom brick & redwood sidesplit on 1 acre. Easy commuting via 404 from Ballantrae. A super buy at \$132,900. vendor transferred - immediate possession.



KENNEDY RD. RANCHER
34 ACRES
This 4 bedroom has it all for the country gentleman and his family plus barn, stream and gently rolling acreage. 5 minutes to 404. Reduced to \$299,000 for action.



NEW LISTING - WON'T LAST
1/3 ACRE
2 minutes to Stouffville, this 2 bedroom bungalow is a fantastic starter or retirement home. Detached garage and detached workshop or barn. Priced to sell fast at \$89,500.



STOUFFVILLE \$99,500
3 bedroom backsplitted, main floor family room/fireplace. Quiet in-town court location. Inground pool.



SUPER FAMILY HOME
Fabulous 4 bedroom family home. Main floor family room, fireplace and walk-out to landscaped yard and inground pool: \$116,900.

RE/MAX omega realty ltd.

446 DAVIS DR., NEWMARKET

898-1211

773-9335

Mt. Albert and surrounding Areas.

Many more to choose from. Prices from \$60,000 to \$500,000

john green



AVAILABLE LAND ALL GOOD LAND
-27 Acres \$69,900.
-2 Acres \$39,900.
-2 Acres \$41,900.
-20 Acres \$59,900.
-65 Acres \$169,000.
-10 Acres \$49,900.
-102 Acres Beef Set Up \$495,000.
john green 773-9335, 898-1211

"BURGER BAR" ON
1 1/3 ACRE
On Woodbine Ave. Seating for 100 people. Also 4 apt. house. House with income of \$2000.00 per month. john green 773-9335, 898-1211



2 ACRES \$89,900.
Sitting high on a hill. Great view large kitchen and master bedroom, main floor family room, wood burning stove, fenced lot.
john green 773-9335, 898-1211



RAVINE LOT 200' DEEP
4 bedroom home features 3 pc. ens., W/I closet, main floor family room, fireplace, main floor laundry, 2300 sq. ft. overlooking valley below.
john green 773-9335, 898-1211



20 ACRE HOBBY FARM
Good barns and Century farmhouse. Good shape: \$159,900.
john green 773-9335, 898-1211



3/4 ACRE \$69,900.
KIRKFIELD
1500 SQ. FT. BUNGALOW
Full finished rec. room, fieldstone fireplace, large kitchen, separate dining.
john green 773-9335, 898-1211



LARGE LOT \$69,900.
3 bedroom aluminum siding home, features large eat in kitchen, main floor laundry, woodburning stove.
john green 773-9335, 898-1211



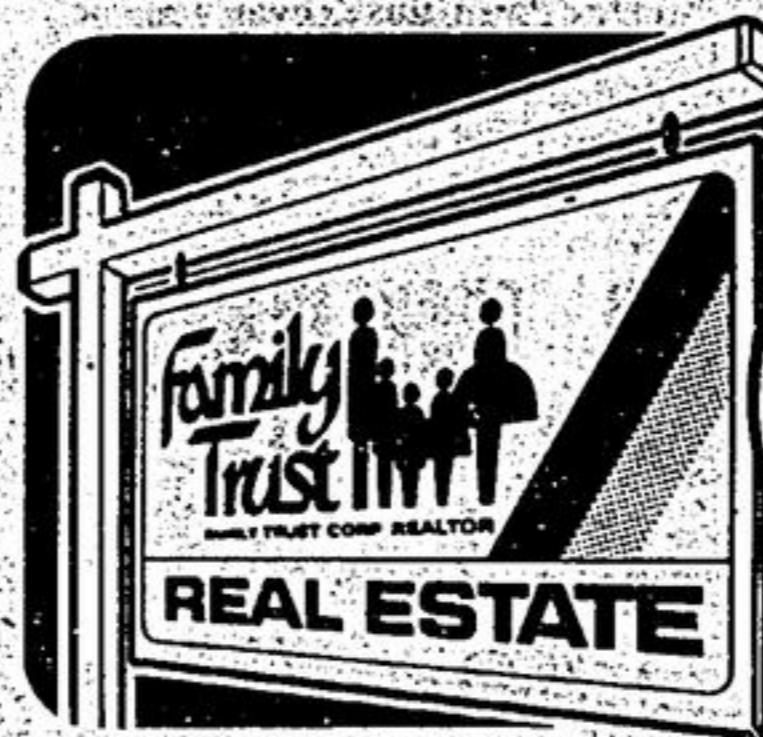
BRAND NEW \$86,900
3 bedroom, 1-4 pc. bath and 1-2 pc. Choose own carpets and cupboards. Large lot.
john green 773-9335, 898-1211



15 ACRE HOBBY FARM
4 bedroom bungalow, features 2 fieldstone fireplaces. Good barn on rolling acres. \$146,000.
john green 773-9335, 898-1211



1 1/3 ACRES
4 bedroom home: features separate living and dining rooms. Main floor family room with fireplace, M/F laundry, 4 pc. ens., 2 walkouts. Prestigious area. Nicely landscaped. Loads of trees.
john green 773-9335, 898-1211



TO YOU... ABOUT A CAREER IN REAL ESTATE



Betty Webber, Manager, Markham Office 294-1372



Eria Kulba, Manager, Unionville Office 477-1270



Pat Zwaal, Manager, Stouffville Office 640-2082

Meet three great managers!
If you are thinking about a career in real estate, these ladies can give you the guidance to get off to a good start.
All three have shown their ability to be top home sellers in this area and are willing to share their successful careers with you.
I invite you to call Betty, Eria or Pat for a confidential appointment to discuss your possible future in a real estate career.
Sincerely,
Robert A. Shea
Robert A. Shea, Senior Vice President
P.S. We will provide a complimentary career profile to help you decide if a real estate career is for you.
EXECUTIVE OFFICES: 8 WELINGTON STREET WEST, MARKHAM, ONTARIO L3P 1A2

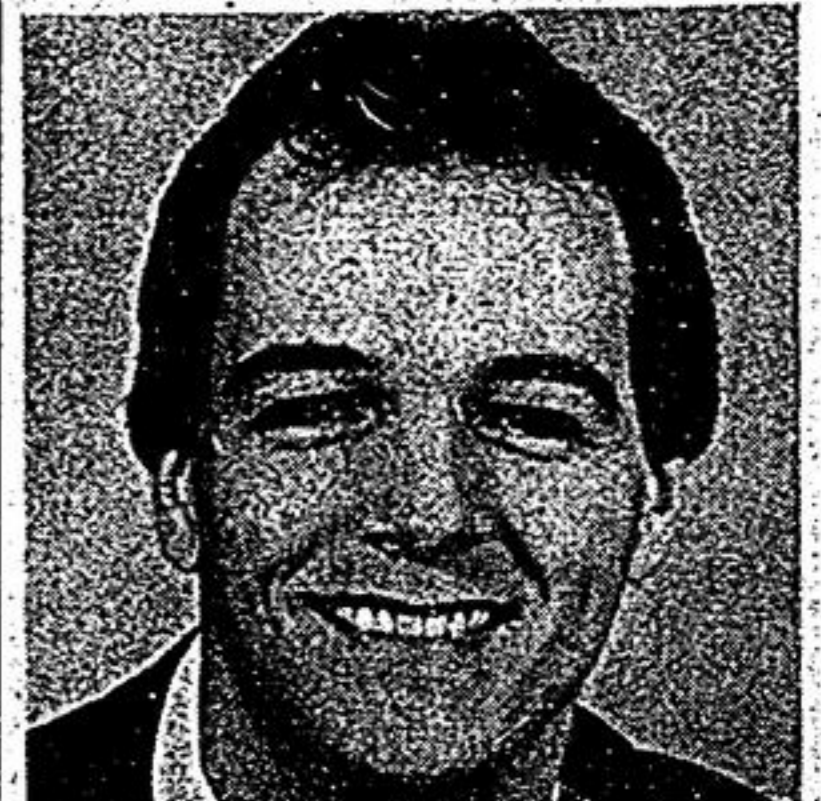
OPEN HOUSE
UXBRIDGE
SAT. & SUN
APRIL 13-14
10 A.M. - 1 P.M.
180 VICTORIA DR.
Bright and spacious charming brick 3 bedroom updated century home on privately fenced treed lot, pine floors, high ceilings, main floor laundry and bathrooms: off eat-in country kitchen. \$89,900.

family Trust REAL ESTATE ANNOUNCEMENT



BETTY-LOU TODD
L.Y. (Betty) Webber is pleased to announce the addition of Betty-Lou Todd to the Family Trust team of Real Estate professionals.
Betty-Lou comes to the job with a various work background which includes radio announcing, broadcast engineering and retail store management.
I am confident Betty-Lou will provide added depth to our group of talented and dedicated sales agents.
Let Betty-Lou help you.
Call 294-1372 (Bus.) or 294-1726 (home).

ANNOUNCEMENT



BRIAN MEHARG
Gerry Meharg takes great pleasure in welcoming his son Brian as a member of his sales team. Brian has gained considerable business & sales experience over the past 6 years working in industry. He looks forward to his chosen career in Real Estate.
Res: 640-5000.
Gerry Meharg Ltd. Realtor
Off: 640-3131

RE/MAX EXECUTIVE REALTY INC.

467 Main St., Stouffville 640-4960

NEW LISTING \$123,500
Stouffville 3 bedroom bungalow on treed 1/2 acre lot. Main floor laundry, separate dining room and den with walkouts, eat-in kitchen. Many extras. To view call Derek Thornton or Bill Shields 640-4960.

CONVENIENT LOCATION
Popular bungalow, double garage, fireplace, \$70,000 in financing. Asking \$91,900. Len Powell 640-4960.

OPEN HOUSE
SUN. APRIL 14
2-4 P.M.
76 ROBINSON ST.
Markham 3 bedroom bungalow on 62 x 156' fenced lot. Walk to all amenities. Fireplace in living room, 1 1/2 baths, possible in-law apt. Asking \$109,900. See you Sunday or call Derek Thornton 640-4960.

Howard Forder 985-7371



SPRING-LIKE OVERLOOKS LAKE \$118,500
3 bedroom raised bungalow, cathedral ceilings, angelstone fireplace and wall separate living and dining room, 3 walkouts to balcony overlooking lake, insulated playhouse, double garage, identify with quality.
CALLING DOCTORS, LAWYERS, ACCOUNTANTS \$100 ACRES
OUTSTANDING PROPERTY AND QUALITY NOT TO BE REPEATED!!
PORT PERRY, EAST, \$168,500. 3 bedroom brick home features fabulous quality living, grandly proportioned rooms, horse barn, easy to see. Call Howard Forder 1-985-7371.

14 ACRES
ENJOY A SWIMMING POOL THIS SUMMER! 7 miles Port Perry, \$119,500. Two-storey, five bedroom home, office, den, walkout from lounge to 16 ft. inground pool, double carport, wonderful family home.
SPECIAL IN-TOWN INCOME PROPERTY
Zoned C3 - attractive 2 bedroom Port Perry home, body shop, spray booth and office on large lot. Asking \$84,900.

SPRING CLEARANCE
Super opportunity to buy the space and business. Garden supplies, farm supplies, Shur-Gain franchise, 100 x 453 ft. irregular lot, 40 Venedward Dr., Port Perry. Offered at \$135,000.

14 ACRES
ZONED COMMERCIAL
2 miles Uxbridge, \$179,900. Large barn suited to heavy duty construction equipment, concrete silo, extensive 2 acre trout pond, 3 bedroom brick bungalow, garage, ideal trucking or excavation location.

1-416-985-7371

BALLANTRAE ROYAL ESTATES



PRICES STARTING AT \$127,900 AND UP
ALL LOTS 3/4 ACRE OR LARGER BUNGALOWS - 2 STOREYS
ALL BRICK CONSTRUCTION
ALL HOMES CUSTOM BUILT
WITH 2" X 6" CONSTRUCTION

SALES TRAILER LOCATED ON HWY. 48 JUST NORTH OF BLOOMINGTON SIDE RD. 640-1156 640-3787

BLOOMINGTON SIDE RD. HWY. 48 HWY. 47