

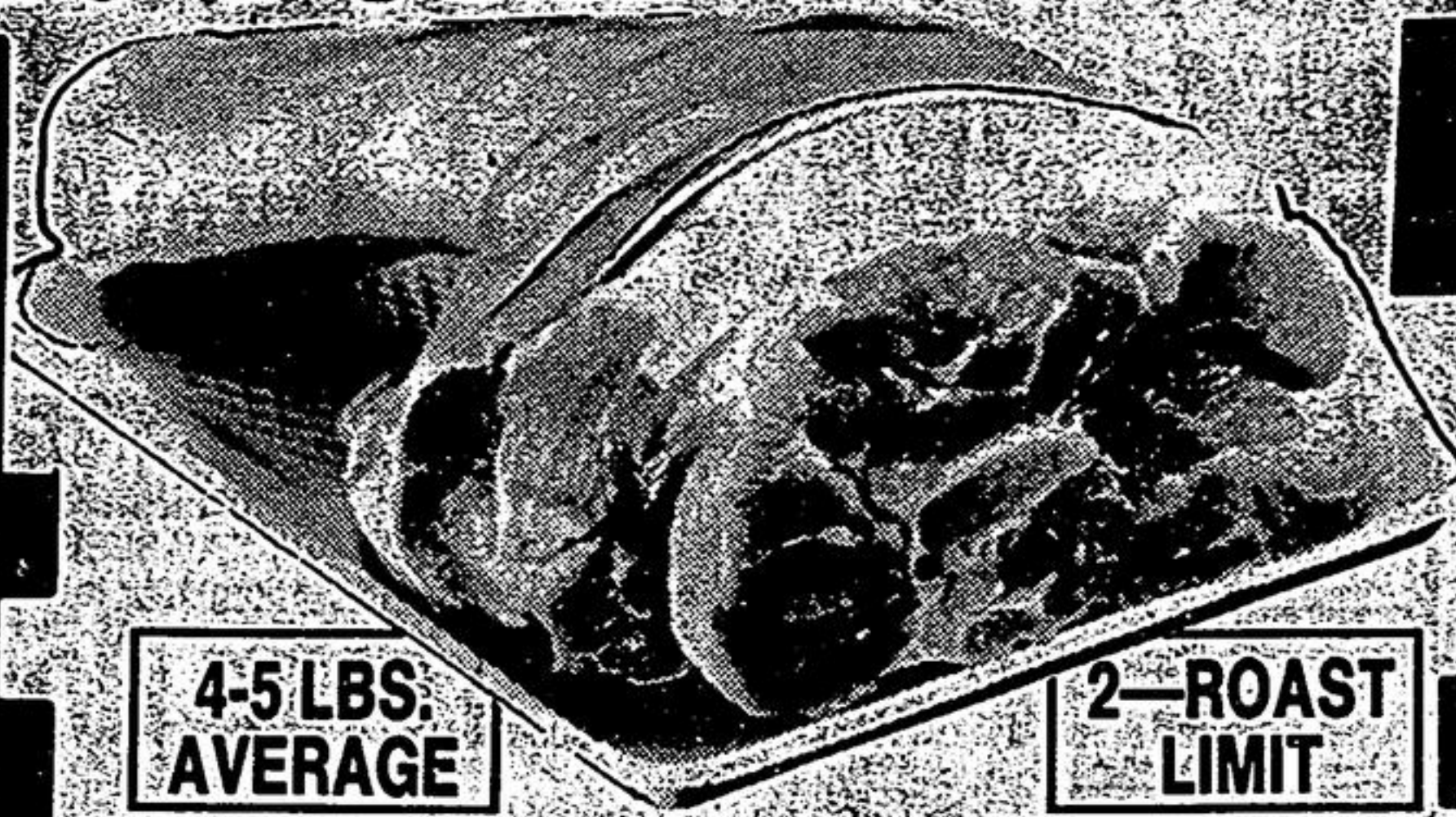
KNOB HILL SPECIALS AVAILABLE ALL WEEK, MON.-SAT.!

FRESH...
NEVER FROZEN
SHANKLESS...

PICNIC PORK SHOULDERS



1.74
kg



79
LB.

4-5 LBS.
AVERAGE

2-ROAST
LIMIT

FROM CONCENTRATE — CANADA CHOICE



**GRANNY SMITH
APPLE JUICE**

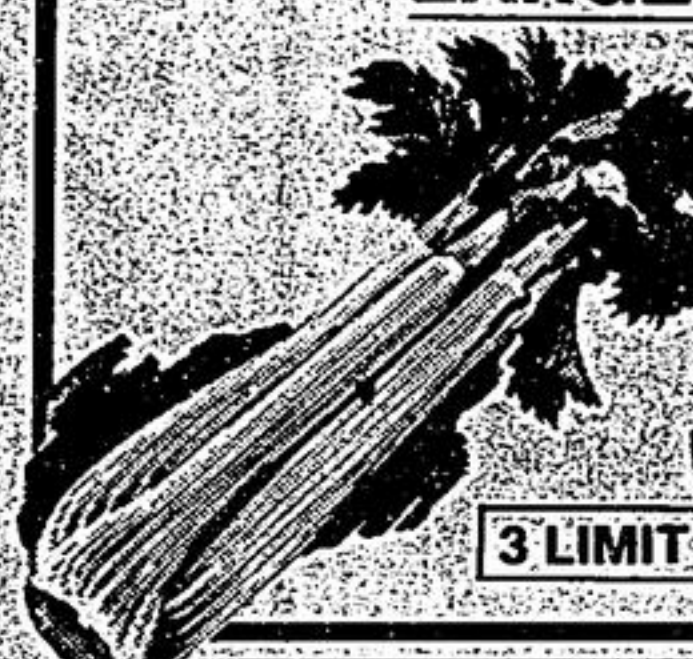
1.36 L. 48 fl. oz. btle.

3 LIMIT

69
ea.

PRODUCT OF U.S.A.
CANADA #1 GRADE

CELERY
LARGE SIZE 24's



3 LIMIT

3/\$1

**DEMPSTER SUNSHINE BRAND
BREAD**

LARGE 675 g LOAF!

- WHITE • 60% WHOLE WHEAT
- 20% CRACKED WHEAT
- HOT DOG ROLLS (8 PAC)
- HAMBURGER BUNS (8 PAC)
- ENGLISH MUFFINS (6 PAC)

DEMPSTER SUNSHINE
HOT CROSS BUNS
(8 PAC)

99
c

59
c

MIX & MATCH — 9 LOAF OR PKG. LIMIT

**RAGU OLD WORLD STYLE
SPAGHETTI SAUCE**

LARGE 28 OZ./796 mL JAR



REGULAR OR
WITH MEAT
MIX & MATCH

99
c

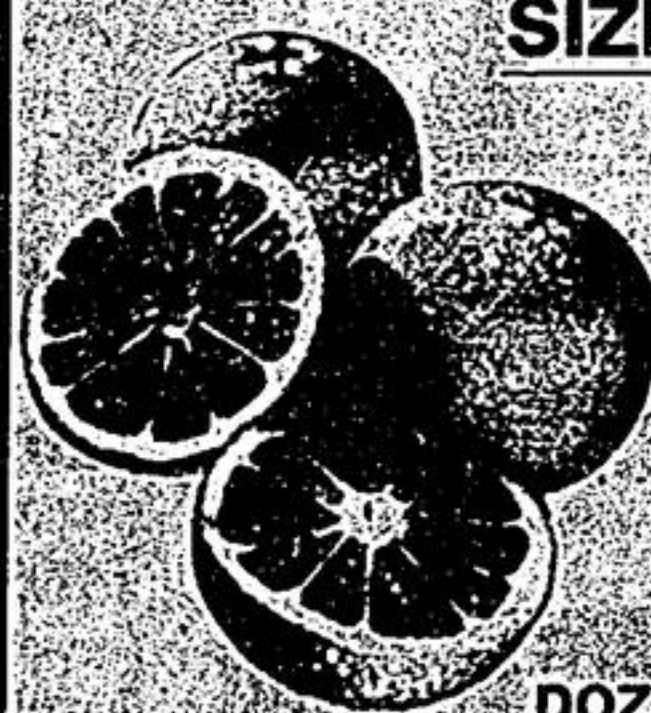
3 LIMIT

PRODUCT OF ISRAEL

JAFFA ORANGES

SIZE 123'S

SELECT YOUR OWN



DOZ

1.69

**LIPTON
CHICKEN NOODLE
SOUP MIX**

4 POUCH PKG. 264 g



1.29

2 LIMIT

**SCOTT COTTONELLE
BATHROOM TISSUE**

8 ROLL PKG.



2.49

2 LIMIT

PRODUCT OF U.S.A. — WASHINGTON
CANADA FANCY GRADE

**GOLDEN DELICIOUS
APPLES**

FILL YOUR OWN BAG

1.08
kg

49
c
LB.

**AJAX
CLEANSER**



69
c

3 LIMIT

**SARAN
WRAP**



79
c

2 LIMIT

**SCOPE
MOUTHWASH**



2.99

2 LIMIT

**"PLEDGE"
FURNITURE POLISH**
(LEMON OR REGULAR)



2.99

2 LIMIT

PRODUCT OF U.S.A.
**ROMAINE
LETTUCE**



LARGE SIZE
49
c

ea.

FROM ONTARIO GREEN HOUSES SMALL & MEDIUM
CANADA #1 GRADE
**ENGLISH
CUCUMBERS**

79
c

ea.

PRODUCT OF MEXICO
LARGE ORIGINAL BUNCHES
**GREEN
ONIONS**



SELECT YOUR OWN
4/\$1

PRODUCT OF ONTARIO
CANADA NO. 1 GRADE
3.28 LARGE **1.49**
kg. MUSHROOMS LB.

5 LB. LIMIT

PRODUCT OF U.S.A. CANADA NO. 1 GRADE
1.30 ANJOU **59**
kg. PEARS LB.

PRODUCT OF FLORIDA
SEALD™ SWEET INDIAN RIVER
GRAPEFRUIT

LARGE SIZE 32's
3/\$1

PRODUCT OF ONTARIO
CANADA FANCY GRADE
**McINTOSH
APPLES**

5 LB. CELLO BAG
1.99

PRODUCT OF ONTARIO
CANADA #1 SMALL
COOKING ONIONS

10 LB. BAG
99
c

Thank You for Shopping at Knob Hill!

KNOB HILL FARMS

"The Markham Food Terminal" WOODBINE NORTH
At No. 7 Highway, Markham

WE RESERVE
THE RIGHT
TO LIMIT

WEDNESDAY
9 A.M. - 10 P.M.

THURSDAY
9 A.M. - 10 P.M.

FRIDAY
8 A.M. - 10 P.M.

SATURDAY
7 A.M. - 10 P.M.

PRICES EFFECTIVE
UNTIL SATURDAY
MAR. 23/85