



## DURING OUR CONSTRUCTION SALE



LOADED WITH STANDARD FEATURES:  
 1700 cc. for less tax  
 Factory Rust Protection  
 4 Door Hatchback (including childproof rear door locks)  
 Power Brakes  
 Reclining Front Seats  
 All Season Steel Belts  
 Michelin Radial Tires (including spaces)

IMMEDIATE DELIVERY!  
 BUY OR LEASE

## TAKE A PONY FOR A RIDE AT JACKSON MOTORS

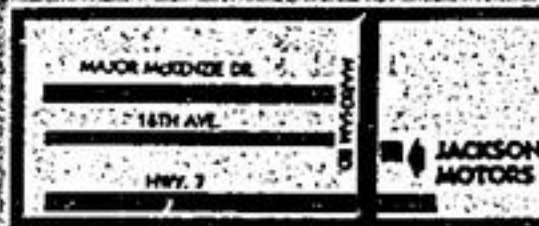
(MARKHAM LTD.)

347 MAIN ST. N.  
 (HWY. 48) MARKHAM

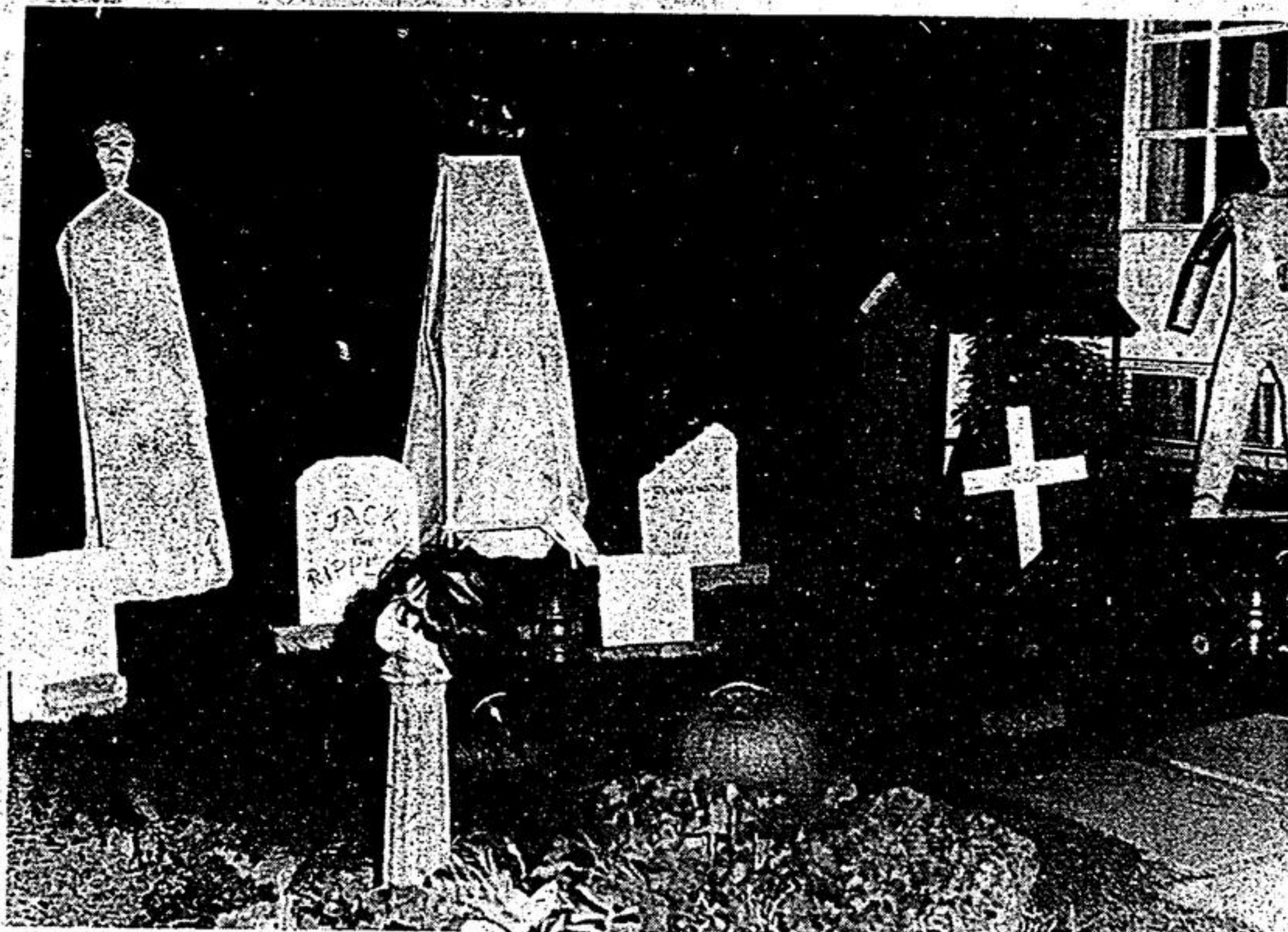
ALSO IN BARRIE  
 AT 140 BRADFORD ST.  
 (705) 732-7733

471-4505

JACKSON GROUP SINCE 1927



# This haunted house a Hallowe'en haven



The house at 191 Manitoba Street, Stouffville, isn't haunted. It only looks that way—on Hallowe'en night. For the past several years, Maureen and Robin Loveday have been exciting trick-or-treaters with their lawn ghosts and goblins. Their

children, Heather, six and Melina, three, enjoy it just as much as their guests. Last Wednesday, they had 168 callers, with some returning for a second look.

—Jim Thomas

## Remember!

STOUFFVILLE — The annual Remembrance Day Service will be held in the Stouffville Legion Hall, Sunday, Nov. 11 at 2:30 p.m.

Prior to the worship, a special Service of Remembrance will be held in Stouffville United Church at 11 a.m. Later, at 1:30 p.m., veterans will gather at the Stouffville Cemetery to pay respect to comrades, now deceased.

Following the service in the Legion Hall, a parade will travel east on Main Street to the cenotaph in the Town Square for the laying of wreaths.

The annual bazaar, sponsored by the Legion Ladies Auxiliary, (Branch 459), will be held Sat., Nov. 10 from 1:30 to 3:30 p.m.



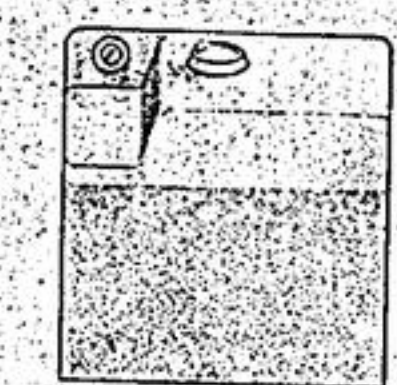
This creature, with its head tucked under its arm, presented a scary sight. However, the enticement of cookies and candies surpassed the children's fears; in fact, they loved it.

—Jim Thomas

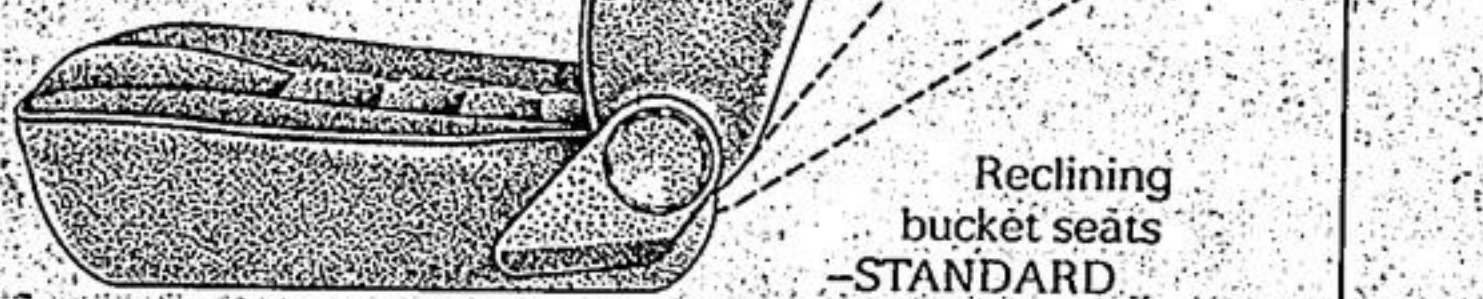
# PONY HAS HIGH STANDARDS



Michelin all-season steel-belted radial tires—STANDARD



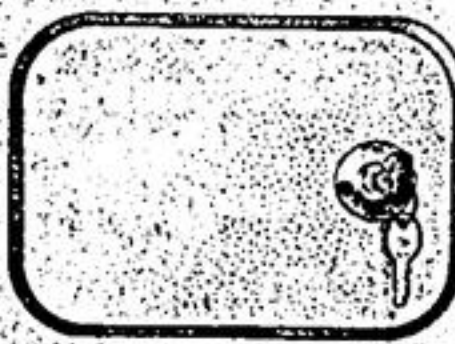
High capacity windshield washer container—STANDARD



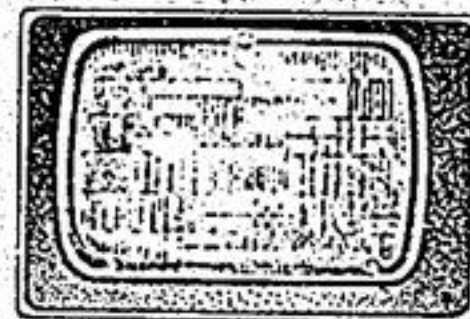
Reclining bucket seats—STANDARD



Rear window defroster—STANDARD



Lockable gas tank door—STANDARD



Halogen headlights—STANDARD

You can buy a Pony in any of three levels of trim, none of which is dull, drab or bare bones.

Even the basic Pony L has standard features that often cost extra on competing cars. If they are offered at all.

Like what? Like full interior carpeting. And four doors plus a hatchback.

The Pony GL model has a few more luxury touches, such as five-speed manual transmission and exterior protective rubber moulding.

The top-of-the-line GLS is so complete you can drive it off the lot as is and be happy. It comes with AM/FM stereo cassette player, passenger-side rear view mirror, cloth covered seats and much more.

Inside every Pony is a solid frame spot-welded by an industrial robot for extra strength. Outside, the Pony also receives inhuman attention with another robot applying perfectly even coats of paint.

Such high standards and such modest prices. No wonder Pony set an all-time record for import car launches last year.

See the car that sets new standards for standards. Test drive a Pony.



TAKE A PONY FOR A RIDE



Westend Hyundai  
 (div. of Marino's Fine Cars)  
 3466 Lakeshore Blvd. W.  
 Toronto 259-8401

Tiger Motor Cars Ltd.  
 2321 Keele St.  
 (2 Blocks S. of Lawrence)  
 Toronto 243-8500

Downtown Hyundai  
 951 Queen Street East  
 Toronto 461-2323

P & A Euro Cars Ltd.  
 961 Eglinton Avenue East  
 Unit 11-F  
 Toronto 425-4488

Auto Trend  
 11262 Yonge Street  
 Richmond Hill  
 884-8841

Limbert's Motors Ltd.  
 95 Eagle Street  
 Newmarket 895-3222

Maxcan Motors  
 230 Rexdale Blvd.  
 Rexdale 746-6771

Rotom of Canada Ltd.  
 1957 Eglinton Avenue East  
 Scarborough 759-4458

Jackson Motors (Markham) Ltd.  
 347 Main Street North  
 (Markham Rd. north of Hwy. 7)  
 Markham 471-4505

## Latham Gallery New members receive a bonus

STOUFFVILLE — Latham Gallery, (located in the Public Library), is holding a membership drive this month.

New members will be eligible to win four tickets for dinner theatre at Stouffville's Theatre-In-The-Park, Deer Park Inn.

The draw will be held Sat., Dec. 1 when the board of Latham Gallery hosts its annual Christmas party.

Gallery membership, (that includes the entire

family), costs ten dollars for the year. For those persons interested in giving a membership as a Christmas gift, a card will be sent directly to the individual or family.

Also, Latham Gallery is considering a tour of artists' studios either in Toronto or within this area.

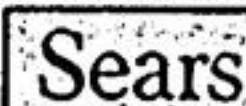
Volunteer assistance at the Gallery would be much appreciated.

For additional information call Deen Glover at 640-2395.

## Sears Super Saturday 1 day only November 10th, 1984

Doors open at 8:30 for savings and values

up to **50% off**  
 YOUR LOCAL SEARS RETAIL STORES



your money's worth...and more