

"Girl Next Door" Praises her school

By Jim Thomas
STOUFFVILLE
—If the Stouffville Christian School requires a public relations person, it need look no further than 16-year-old Heather Johannessen, Thicketwood Boulevard, Heather, in Grade 11, has been a student there since Grade 7 and enjoys it.

She's our "Girl Next Door". Heather admits she was apprehensive at first, mainly because most of her friends had graduated from Summitview and were going on to Stouffville High. However, her parents urged her to give it a try. She's never been sorry.

"There's a close association between the teachers and students," Heather says. She hopes to continue through Grade 12 and following graduation, take a course related to Business Administration. Heather and her family moved to Stouffville from Oakville eight years ago. She's a member in the congregation of St. James' Presbyterian Church and assists with the children (Junior Church) there. She's also associated with the Youth Group of Stouffville Pentecostal Church and attends evening services there. Heather's an excellent athlete



Sixteen-year-old Heather Johannessen, is a Grade 11 student at Stouffville Christian School. Recreation interests include gymnastics,

with gymnastics her "first love". She was involved in the gymnastics program at York University and was a member of the Markham Gymnastics Club. She's advanced to the stage where she can coach at the elementary level.

Heather credits Mrs. Mumford, a

teacher on the staff at Summitview, with kindling her interest in the sport. She also enjoys soccer, downhill skiing, water skiing and tennis.

She's taken piano lessons and was a member of the Stouffville Figure Skating Club.

Heather doesn't hide the respect

she holds for her parents. "They're very special," she says. Special also is boyfriend Jeff Laird of Bristol Ponds, R.R. 3, Stouffville.

This past summer, Heather worked in her father's office. She's become quite proficient in various accounting procedures

and computer operation. The experience, she feels, will prove invaluable in the years ahead.

Travel-wise, Heather's been to Florida and Calgary. Some day she hopes to see first-hand some of the places so familiar to her through stories in the Bible.

—Jim Thomas

School Heritage Week

BALLANTRAE — For twenty-one students from Grades 2 to 7, at Ballantrae School, history is repeating itself this week.

The boys and girls have returned to the days of their mothers and fathers, grandmothers and grandfathers, even their great-grandmothers and great-grandfathers.

They're visiting the Whitechurch-Stouffville Museum and, for a few hours, re-enacting scenes familiar to the little red brick schoolhouse, located there.

The four-day event is part of Heritage Week at Ballantrae School and a tribute to Ontario's Bicentennial. Neil Beatty is the staff teacher in charge, working in co-operation with Museum curator Mary Hopkins.

The day will begin at 9:20 a.m. and conclude at 2:45 p.m. A portion of the activities will be planned by Museum personnel and portion by the school. Many of the boys and girls will be appropriately dressed for the occasion.

BIG SAVINGS DURING OUR ... CONSTRUCTION SALE

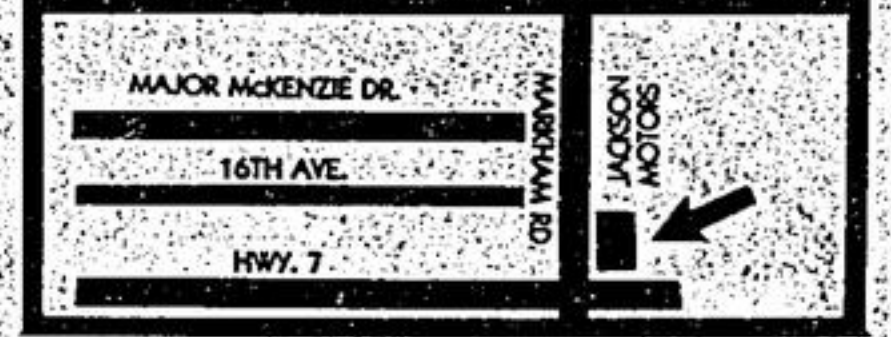


1985 HYUNDAI PONY IMMEDIATE DELIVERY

TAKE A PONY FOR A RIDE AT JACKSON MOTORS

347 MAIN ST. N. (HWY. 48) MARKHAM 471-4505

SINCE 1927



Dominican Republic

Dominican Beach Village
from \$599. per person all inclusive

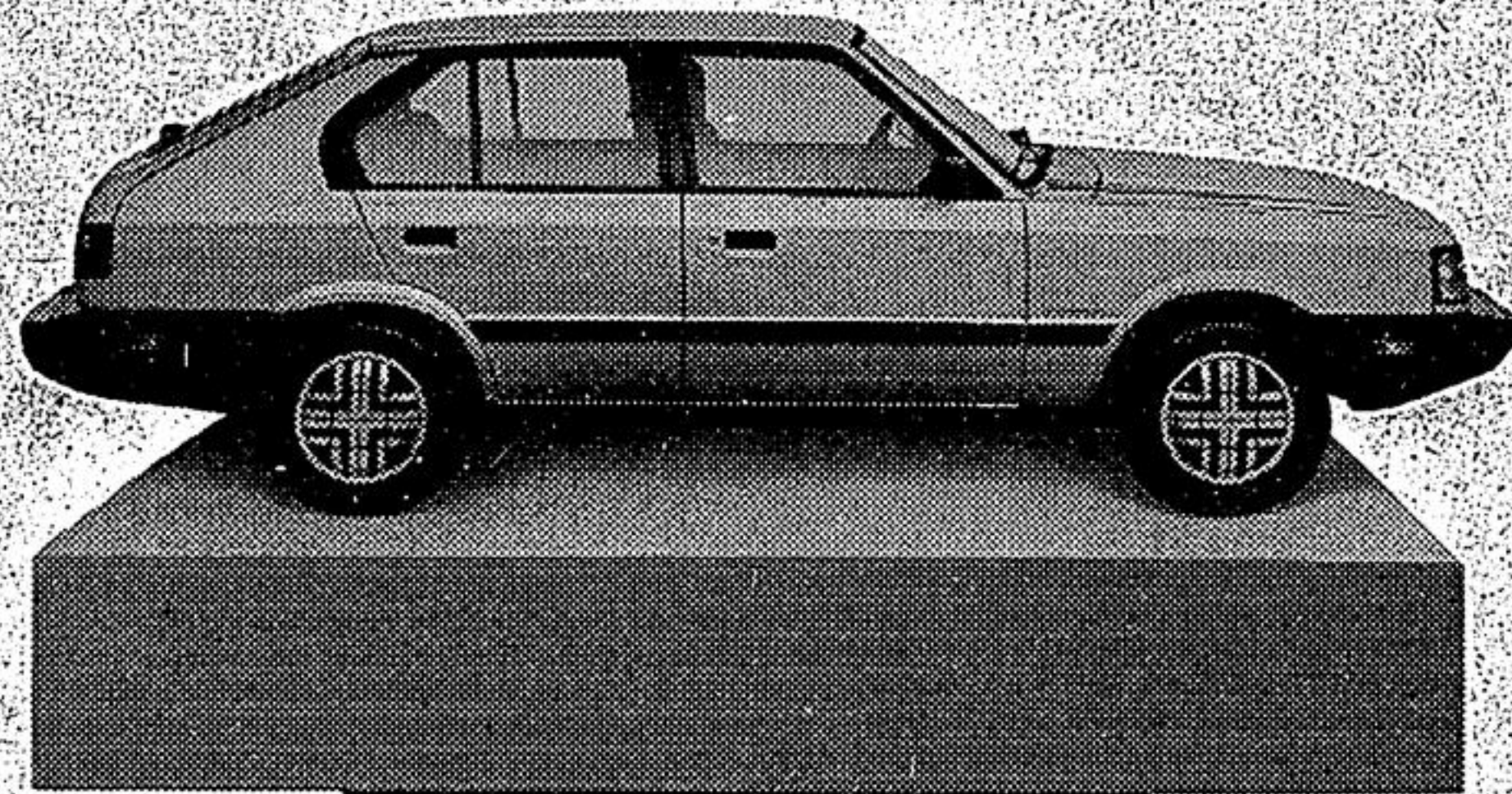
- breakfast/brunch dinner daily
- UNLIMITED rum based drinks & beer



Jo Demasson

Holiday Inn Centre Strip
Goliger's
Call for details
54 Wellington St. In the Markham Shopping Centre 294-7620
serving travellers since 1955

INTRODUCING THE MOST SUCCESSFUL IMPORT EVER INTRODUCED



Introducing the 1985 Pony. Looks a lot like the '84, doesn't it? That's no accident. The '84—which set a sales record for import car launches in Canada—looked much like the '83, sold around the world. Which looked reassuringly like the '82, the '78 and the original '76 which Italian styling genius Giugiaro designed so beautifully in the first place.

By now, Pony has developed a well-deserved reputation for value, reliability and comfort. Year after year, Hyundai builds in more features to keep making the Pony an irresistible buy for its asking price.

For 1985, Pony sports a black grill, door handles and other trim. The colour of the seat belt webbing coordinates with the rest of

the interior. The seat belt and door ajar buzzers are being replaced by chimes. And an efficient 1600 cc engine replaces the penny-pinching 1439 cc engine in the top-of-the-line GLS model.

You can review all of the changes from 1984 to 1985 at your Hyundai dealer, but that won't take very long. Take the time to check out what *hasn't* changed.

The 1985 Pony still boasts remarkable standard features. Michelin steel-belted all-season

radial tires are standard. So is full interior carpeting and so are fully adjustable front bucket seats. Four doors and a hatchback are standard. A cigarette lighter, factory rustproofing and halogen head lights are standard, standard and standard.

The Pony still uses regular, leaded gasoline—the cheapest kind. So the 1985 Pony is economical to own and maintain.

Like the 1984 Pony, this year's model is one of the best bargains you can drive. Only more so. See it at a Hyundai dealer.

TAKE A PONY FOR A RIDE
HYUNDAI

19th HOLE GOLF SHOPPE

P.G.A. Professional
BILL SMITH

DO IT NOW!

GOLF CLUB REPAIRS

Beat the rush - all Major and Minor repairs expertly done on our premises.

WE CARRY MOST NAME BRANDS
19th Hole GOLF SHOPPE
NORTHEAST CORNER HWY. 7 & McCOWAN
PHONE 471-GOLF

HOURS: MON., TUES., WED. 10-7 THURS. 10-8, FRI. 10-9 SAT. 10-5

- | | | | | |
|--|---|---|---|---|
| Westend Hyundai
(div. of Marino's Fine Cars)
3466 Lakeshore Blvd. W.
Toronto 259-8401 | Tiger Motor Cars Ltd.
(div. of Northwest Motors Ltd.)
2321. Keele Street
Toronto: 243-8500 | Downtown Hyundai
951 Queen Street East
Toronto 461-2323 | P & A Euro Cars Ltd.
961 Eglinton Avenue East
Unit 11-F
Toronto 425-4488 | Auto Trend
11262 Yonge Street
Richmond Hill
884-8841 |
| Limbert's Motors Ltd.
95 Eagle Street
Newmarket 895-3222 | Maxcan Motors
230 Rexdale Blvd.
Rexdale 746-6771 | Rotom of Canada Ltd.
1957 Eglinton Avenue East
Scarborough 759-4458 | Jackson Motors (Markham) Ltd.
347 Main Street North
(Markham Rd. north of Hwy. 7)
Markham 471-4505 | |