

High school sports are well underway

Stouffville Dist. Secondary School's fall term began less than two weeks ago, but a full sports program is already underway or planned.

The first major competition is a Girls' Golf Tournament, Sept. 20 at The Maples of Ballantrae. The coach is Chuck Roche and the G.B.S.S.A. convenor is Lin Jones.

Other team coaches are: Midget Boys' Volleyball-Jim Fletcher; Junior Boys' Volleyball-Cathy Croucher; Senior Boys' Vol-

leyball-Jim Rehill; Junior Girls Basketball-Ken Jones and Bob Tooker; Senior Girls' Volleyball-Al Piette; Boys' and Girls' Cross-Country-Dave Connell and Boys' and Girls' Tennis-Dave Connell.

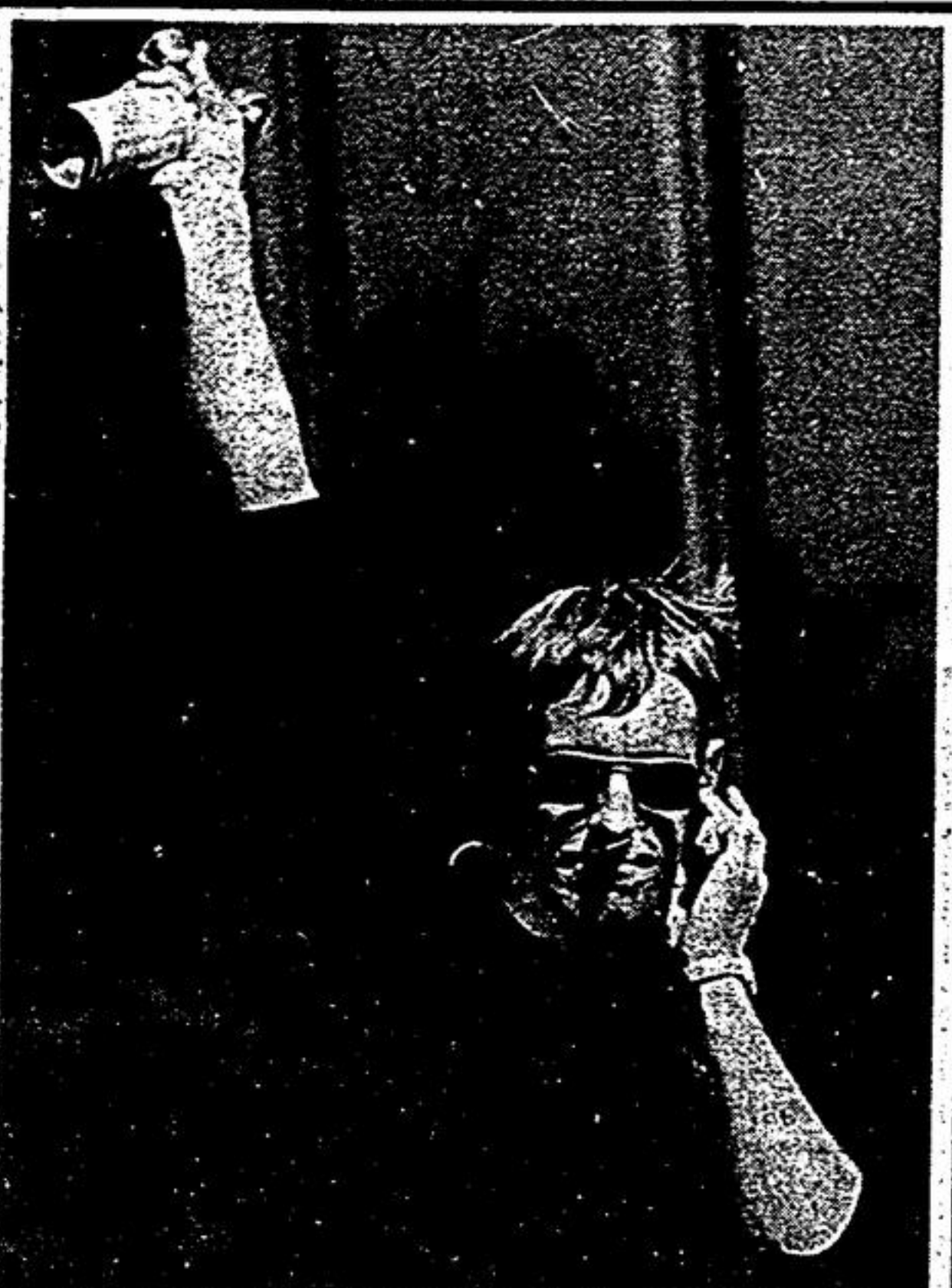
Judo registration

Registration for the Ballantrae Judo Club will be held Tuesday, Oct. 2 at 6:30 p.m. at Ballantrae Public School.

The first session, which runs for 10 weeks, is an introductory course for children ages 9 to 14. No experience is

necessary. The cost is \$15 per student. Instructor Kathy Gordon, who has a third degree black belt, said physical fitness and discipline will be stressed in the class.

For further information on the course call 640-3788 between 9 a.m. and 5 p.m.



Assistant Golf Pro Bob Speirs prepares to start the first group during Friday's Chamber of Commerce Golf Tournament held at Stouffville's Sleepy Hollow Country Club.



Chamber of Commerce president Ged Stonehouse (centre) presents golf tournament awards to Don Norris (left) of Stouffville, for the low net score, and to Peter Bulliss (right) of Mississauga, for the low gross score.



Ken Smurthwaite chips on to the green during Friday's Chamber of Commerce Golf Tournament.

RENT AN "OLDIE" CAR RENTAL
221 WELLINGTON ST. EAST
DAILY - WEEKLY - MONTHLY
SAVE \$\$ - LOW, LOW RATES
CALL 294-6024

ATTENTION CURLERS
Unionville Curling Club
has limited openings available for Men, Ladies & Junior members
Instruction Available
For information call 477-2711

HOCKEY
MARKHAM MINOR HOCKEY ASSOC.
"A" REP TEAM TRY-OUT SCHEDULE
HELD AT CENTENNIAL ARENA, McCOWAN ROAD NORTH OF HIGHWAY 7
COST IS \$3.00 PER HOUR PLAYED
FOR FURTHER INFORMATION CALL:
JOHN CRAW - O.M.H.A. DIRECTOR
294-2042

DATES	DIVISION	TIME
SAT. SEPT. 22/84	ATOM A	8:00 a.m.-9:00 a.m.
	PEEWEE A	9:10 a.m.-10:10 a.m.
	BANTAM A	10:20 a.m.-11:50 a.m.
SUN. SEPT. 23/84	MIDGET A	9:20 p.m.-11:00 p.m.
	ATOM A	8:00 a.m.-9:00 a.m.
	PEEWEE A	9:10 a.m.-10:10 a.m.
MON. SEPT. 24/84	BANTAM A	10:20 a.m.-11:50 a.m.
	MIDGET A	12:00 a.m.-1:20 p.m.
	ATOM A	7:00 p.m.-7:55 p.m.
TUES. SEPT. 25/84	PEEWEE A	8:05 p.m.-8:55 p.m.
	BANTAM A	9:05 p.m.-9:55 p.m.
	MIDGET A	10:05 p.m.-11:00 p.m.

Markham Youth Soccer Club
Indoor Soccer Registration
For Boys & Girls born in 1970 up to and including 1978
All Registrations will be Accepted at Markham District High School (cafeteria) On Tuesday, Sept. 18th and Wednesday Sept. 19th
6:30 p.m. - 8:00 p.m.
Registration Fee \$35.00 per child maximum \$105.00 per family

Quick Start ...It Works
Quick Start! It's the fastest Weight Watchers program ever. And it's a proven success because hundreds of thousands have tried it and lost weight quicker in the very first weeks. Quick Start is simple and sensible. It's flexible, too, with a practical exchange system that allows you to substitute the foods that you like. And the appetizing, easy-to-follow menus consist only of real foods - no food substitutes or supplements.
We're accepting enrollments now for the Quick Start Program. So, call Weight Watchers today. Hurry! All you need is Quick Start, and you'll really take off.

WEIGHT WATCHERS
1/2 PRICE SPECIAL
September 4 to September 21, 1984
Join Weight Watchers for \$9.00 instead of the regular \$18.00 on your first meeting and registration fee, \$7.00 weekly thereafter.
Senior Citizens and students join for \$4.50 instead of the regular \$9.00, \$4.00 weekly thereafter.
New Member Registration Times:
Morning - 9:20 a.m. Evening 6:45 p.m.
FOR FURTHER INFORMATION CALL:
1-800-268-3915

104th ANNIVERSARY PARADE OF VALUES

HOTPOINT REFRIGERATOR RT 162
• 16 Cu. Ft.
• 2 Door Frost Free
• Vegetable Crispers Plus Meat Drawer
• Deluxe Trim
ANNIVERSARY SPECIAL (almond only)
\$769.95 DELIVERED
Monthly payments only \$19.67

GENERAL FREEZER G12L1
• 12 Cu. Ft.
• 410 lb. Food Storage
• Food Protection Plan
ANNIVERSARY SPECIAL
\$369.95 DELIVERED
Monthly payments only \$9.40

HARDWICK RANGE PC9611MW539R
• 30" Gas Range
• Deluxe Black Glass Door
• Custom-Trim
BONUS: Chrome Burner Bowls
INTRODUCTORY SPECIAL
\$649.95 (white) DELIVERED
Monthly payments only \$16.51 (almond \$10 extra)
Prices in effect until Saturday October 13, 1984 or while stock lasts.

INGLIS LAUNDRY PAIR LIBERATOR PLUS WASHER T043500
• Automatic C/W 4 Cycles
• 4 Wash/Rinse Temperatures
• Fabric Softener-Bleach Dispensers
ANNIVERSARY SPECIAL (white) \$599.95 DELIVERED
Monthly payments only \$15.24

LIBERATOR PLUS GAS DRYER T073500
• 3 Temperature Selections • Custom Dry - Regular, Permanent Press • Drying Rack
ANNIVERSARY SPECIAL (white) \$449.95 DELIVERED
Monthly payments only \$11.43

HOTPOINT MICROWAVE RK9102
• Dual Wave System (electronic)
• 10 Power Levels
• Programmable up to 3 Stages
• Defrost, Auto Roast
• 2 Position Shelf
ANNIVERSARY SPECIAL \$629.95 DELIVERED
Monthly payments only 16.01

PURCHASE POWER PACKAGE
*Charge your purchase on your gas bill. Lowest monthly payments available - up to five years to pay. Installation arrangements are available and may also be financed.
*No down payment with approved credit based upon 5 years financing at an interest rate of 15% a month or 18% per year.
FOR EXAMPLE: Unit price of \$300 plus credit charges of \$157.20 for a total of \$457.20.

THE CONSUMERS' GAS COMPANY STORE
Best selection of gas and electric appliances.
Keswick Z4 7800 Woodbridge, Uxbridge Z8 2500
884-9105 - 887-5847 - 895-4577

BUY, BYE.

If you don't buy a new Polaris now, you'll miss a good buy. If you don't buy a new Polaris now, you may not get another chance.

But if you do buy now, or before October 15th, you'll get \$200 worth of clothing or accessories FREE. Wait and buy a new Polaris between October 16th and November 30th and get \$100 worth of extras FREE.

We're making Polaris snowmobiles easy to buy. So easy in fact, you'd be wise to buy early.

Plus, watch for our 30th Anniversary Open House at your nearby Polaris dealer. It runs September 15-23. Take advantage of more deals, sign up for prizes and be one of the first to see our best ever 1985 model line-up. Also find out about on-the-spot financing.



WALL'S SALES & SERVICE
R.R. #4
STOUFFVILLE
888-1998

