

TerraGold HOMES



\$119,900 - Separate living and dining rooms is only one of many great features in this 4 bedroom house complimented with large kitchen with walk-out, main floor family room with fireplace, powder room, side entrance, circular stairs, master bedroom with full bathroom and walk in closet, oversized main bathroom (1 elevation).



\$99,900 - Main floor family room and full 4 pc. ensuite bathroom were added to this house to make it the most popular model in the area. Add to it large main floor hallway with circular stairs, oak pickets and handrail, cosy kitchen, main floor powder room, 3 spacious bedrooms. Fireplace is optional at the cost of \$1500 (2 elevations).



\$96,900 - 3 bedroom home featuring spacious living and dining room, bright kitchen and "Green house" dinette with walkout to patio, main floor powder room, side entrance to house and basement, master bedroom, walk-in closets and door to main bathroom, oak pickets and handrail. (2 elevations).

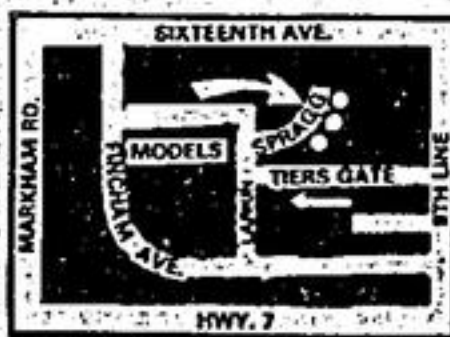


\$114,900 - 3 bedrooms, 2 full baths, main floor powder room, master bedroom with 4 pc. ensuite and walk in closet, large living room with bay window, spacious kitchen with walkout to patio, main floor family room with fireplace, large main floor centre hall with circular stairs, oak pickets and handrail. This is truly a model home of new generation of Cadillacs in home industry. (2 elevations).



\$118,900 - Choose between 3 and 4 bedroom home (same price) that features large bedrooms, main floor family room with corner fireplace, oversized kitchen with "Green house" dinette with bay window and walkout to patio, main floor powder room, "L" shaped living and dining room, large hall with circular stairs, oak pickets and handrail. (1 elevation).

NOTE: MORTGAGE AT 10% FOR 3 YEARS
***2 CAR GARAGES**
***ALL BRICK CONSTRUCTION**
***MODELS AVAILABLE**



Lerman real estate limited
 Res. 439-4573 Site: 471-1118 Office: 665-7888

GERRY Meharg LTD. REALTOR

SPECIALIZING IN THE "SMALL TOWN - COUNTRY" LIFESTYLE!



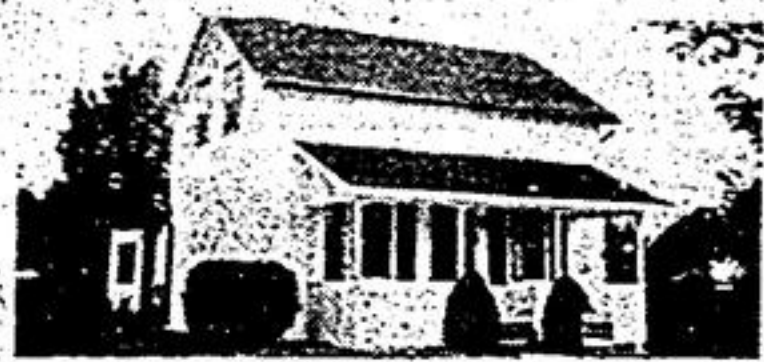
SUPER SIDESPLIT \$94,500

Stouffville, 3 bedrooms, 2 baths, family room with walk-out & stone fireplace, rec. room, garage. Mature trees, open fields. Immediate possession! Call Fran Sainsbury 640-3131 or Res. 640-1142



CIRCA 1876 UXBRIDGE

66 x 165' mature lot in preferred area. Pine & cherrywood plank floors, open stairway in living room, 3 spacious bedrooms, 1 1/2 baths, updated wiring, heating, roof, etc. Asking \$89,900. Financing available. Call Lee Weldon 640-3131 or Res. 640-2770



UXBRIDGE \$79,900

Well maintained vinyl sided home on large lot. Spacious living/dining room, big country kitchen, modern bath, main floor laundry-workshop. Call Lee Weldon 640-3131 or Res 640-2770



KNOCKOUT SIDESPLIT 1.25 ACRES

East Stouffville Area - Custom built. Shows to perfection. 4 bedrooms, country kitchen overlooking family room with fireplace & glass walk-out. Large living room & separate dining room, upper level laundry, entry from garage to basement. Beautiful lot, easy access to 404. Asking \$142,900. Call Lee Weldon 640-3131 or Res. 640-2770



INDOOR BETZ POOL

3.7 acre ravine lot. Prestigious Bristol Pond Estates. 12 minutes from 404 via Bloomington. Custom designed 2 storey, 4 bedrooms, sunken family room with fireplace, many walk-outs. Asking \$189,900. Call Lee Weldon 640-3131 or Res 640-2770



STOUFFVILLE \$97,500

Spacious front entry, cozy main floor family room with fireplace, outstanding "oak kitchen" with south glass walk-out. Spacious master bedroom, rec. room. Excellent value in desired area. Call Lee Weldon 640-3131 or Res. 640-2770



28 ACRES - WEST UXBRIDGE \$154,900

Scenic property with view, large pond, mature trees. 3 bedroom board & batten bungalow features spacious living and family rooms separated by an efficient central fireplace, office or den, oversized garage. Inground pool. Vendor will assist with financing! Call Lee Weldon 640-3131 or Res. 640-2770



"OPEN A BUSINESS"!

Stouffville - Cl. 6 rooms includes apartment & appliances. B.I.A. area. Adequate parking. Grow with out town. Listed \$119,900. Call Fran Sainsbury. 640-3131 or Res. 640-1142

BUY NOW! \$89,900

Stouffville 3 bedroom, 2 storey, Franklin fireplace in rec. room, 2 baths, garage, deck, fenced yard. 12 1/2% 1st of \$65,000. Call Fran Sainsbury 640-3131 or Res. 640-1142

10 ACRES - GOODWOOD

Asking \$64,900 Excellent terms available. Call Lee Weldon. 640-3131 or Res. 640-2770

Help keep Red Cross ready. +

kids are citizens too!



So let's acknowledge the outstanding young citizens of Ontario, through the Bicentennial Year "Junior Citizen of the Year" awards program.

Young people aged 6 to 18 who have proven their courage, ingenuity, resourcefulness, initiative, leadership, fortitude, community service and selfless performance are eligible for nominations. We're not looking for the "super-heroes" -- all-round, good kids are good citizens too.

This year the 24 top-ranking nominees will receive a CP Air ticket, good for any Canadian destination. Twelve of the recipients will attend the Ontario Community Newspapers Association convention in Toronto and a reception with the Lieutenant Governor.

Submit your nomination now. The final deadline for 1984 nominations is **October 31**.

Nomination forms are available through this newspaper. Contact:

Economist & Sun
 9 Heritage Rd.
 Markham, Ont.
 L3P 1M3

Stouffville Tribune
 54 Main St. W.,
 Stouffville, Ont.
 L0H 1L0

ATTENTION: Don Atanasoff

ATTENTION: Jim Thomas

...or call 1-800-268-5054 to have a nomination form mailed to you.

A joint Bicentennial Year project of the Ontario Ministry of Tourism and Recreation, CP Air and Ontario Community Newspapers Association.



Advertisement designed & prepared by Kate L. O'Leary

Family Trust REAL ESTATE CAREER NIGHT

THURSDAY, SEPTEMBER 20th, 1984 - 7:30 p.m.



ROBERT SHEA BETTY WEBBER ERLA KULBA ROBERT JONES

CAREER TRAINING

Bob Shea, graduate Lawyer and Senior Vice President and General Manager of Family Trust, supervises the firm's 600 Sales Representatives, will talk about the training aids that will help you succeed.

SELF EVALUATION

Betty Webber, consistent \$3 Million producer and Manager of the Markham Sales Office for the past year, will talk about the personal qualities it takes to succeed.

ACHIEVING SUCCESS

Erla Kulba, a consistent top producer in the Unionville area and now Manager of the Unionville office, will talk about proven methods and techniques of success.

MORTGAGE FUNDING

Bob Jones, Mortgage Manager for Family Trust, will talk about the support and advantages to sales representatives of our in-house Mortgage Department.

LOCATION: Family Trust Corporate Headquarters Training Centre, 8 Wellington Street West, Markham. (Highways No. 7 & 48)

To provide participants with a meaningful evening, space will be limited to the first 25 registrants.

REGISTER EARLY - In MARKHAM call Betty Webber - 294-1372
 UNIONVILLE - Erla Kulba - 477-1270
 THORNHILL - Bob Shea - 889-8770

Before you close the deal open the door to the basement.

Ask for gas "I did"

Consumers' Gas
 It's Natural Gas in 8 out of 10 new homes!

THE PLANNING ACT NOTICE

Application for Amendment to Minister's Restricted Area Order - 104/72 Town of Markham

Take notice that application to amend the restricted area order filed as Ontario Regulation 104/72 has been received by the Minister of Municipal Affairs and Housing. The application is:

Applicant: Maurice D. Frisque
 File No.: 19-20-002-8404
 Proposal: To permit the expansion of Markham Airport and to allow the erection of a new office building with a 720m² floor area, proposed new hangars with an area of 2000m² and a new runway on part of Lot 27, Conc. 8.

All submissions in support of, or in opposition to, the application described above, and received by the Ministry of Municipal Affairs and Housing, 777 Bay Street, 14th Floor, Toronto, M5G 2E5 on or before the 20th day of September, 1984, will be fully considered before a final decision is made. Please refer to the file number indicated above.

In addition, under Section 46(10) of the Planning Act 1983 any interested person may request a hearing by the Ontario Municipal Board on an application for amendment to a restricted area order.

Ministry of Municipal Affairs and Housing
 Ontario Claude Bennett, Minister

Consumers' Gas has a new address. Yours.

One of the most important features of your new home is the heating system. With natural gas, you'll enjoy the lowest energy costs, 24-hour service, and a plentiful supply for decades to come.

Combine the gas furnace with central air and you have the cheapest, most effective year-round home comfort. It makes sense to move in with us.

Ask for gas "I did"

Consumers' Gas
 It's Natural Gas in 8 out of 10 new homes!