

Stop, smell the flowers

By LISA PARTSA
Staff Reporter
Mrs. Doris Fischer-Jenssen's kitchen is filled with the aroma of her award-winning hobby. No, not gourmet cooking, but an attractive array of fragrant flowers and exotic plants.

The Markham resident says she has always been an avid plant-lover. Her home has plants and flowers in every corner: in the summer, she and her family cultivate a huge vegetable garden in the backyard. Since 1981, she has been an active member of the Markham Horticultural Society, a club of about 125 plant enthusiasts.

The society meets once each month in the Veteran's Hall to discuss their mutual hobby and listen to guest speakers on topics germane to horticulture. The members are of all ages and occupations.

"We're all amateurs," said Mrs. Fischer-Jenssen, rearranging a pot of purple violets on a shelf in the kitchen. "Anyone with an interest in plants can join."

She said new members don't have to have an extensive knowledge in horticulture. "We'll help anyone who's new and not familiar with the plants," she explained. Most of the members even encourage their young children to develop an interest in plants.

Her son Kristian, 4, and daughter Andrea, 7, are both proud when they grow their own flowers or vegetables. Seven times per year, the members have a chance to display their talents at a flower show organized by the Society. At the end of each year, awards are given for competition winners.

At the Society's annual general meeting last week, Mrs. Fischer-Jenssen's talents were rewarded with the Royal Bank Trophy for the member having the greatest



Mrs. Fischer-Jenssen proudly displays the Royal Bank Trophy she received from Markham's Horticultural Society for the member having most points during the year.

— Lisa Partsa

number of points gained at shows during the year. Points are received in two categories; the specimen and the decorative.

In the specimen class, points are given for the overall quality of the leaf or flower. Attractiveness in arrangement and presentation of an exhibit are the criteria for judging in the decorative class.

Other awards were also given at the meeting. A special Life Membership was presented to Director Elaine Hutcheson in tribute to her many years of service and dedication to the Society. According to Director and Promotion Manager Sadie Turnbull, the certificate is "very rarely" awarded.

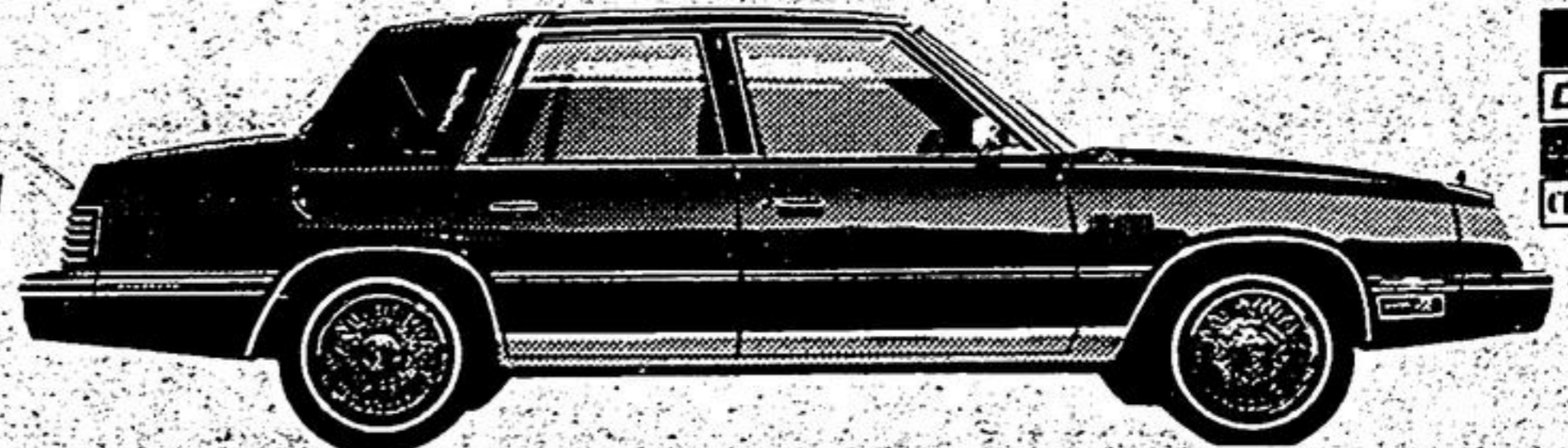
Elections and installation of officers for 1984 were also conducted. Dorothy McKelvey is president, Bea Petrie and

Barbara Brand are vice presidents. Doris Fischer-Jenssen is secretary, Isabel Risebrough is treasurer,

and directors for 1984-85 are Jane Forbes, Helen Burton, Louise Dart, Elaine Hutcheson and Sadie Turnbull.

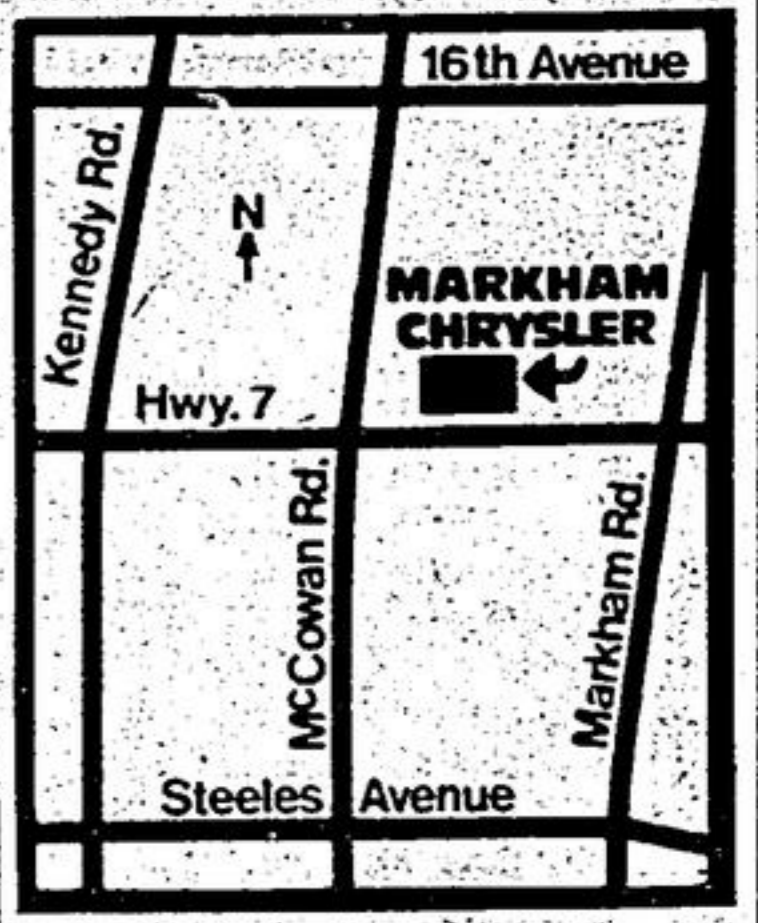
"A WINNER" AT THE 1984 Auto Show

THE 1984 CHRYSLER NEW YORKER



...it does more than just look good

John Longman is proud to present the new 1984 Chrysler New Yorker in the Markham area. The car is beautifully styled and conforms to the most discriminating luxury car buyer. It represents an advanced pairing of beauty and technology. It handles with amazing ease and seating is excellent on short or long trips. A quieting and relaxing experience any time. John Longman invites you personally to take a test drive in this excellent car. Please call him at 471-1500.



FOR A BETTER DEAL!

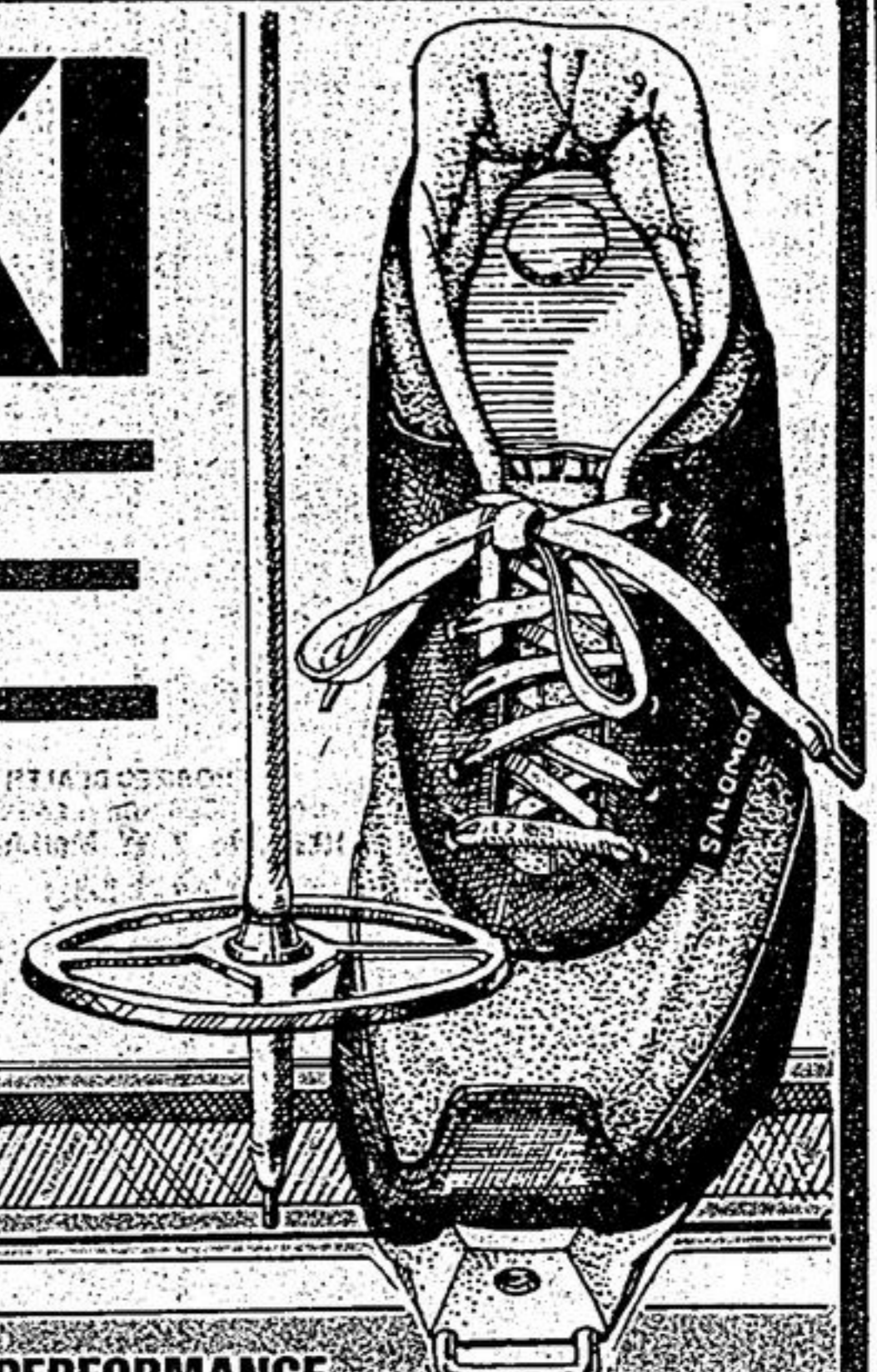
JOHN LONGMAN'S

Markham Chrysler!
471-1500

HIGHWAY #7, MARKHAM, EAST OF McCOWAN

SKINNY SKI CLEARANCE

OUR SKINNIEST LOWEST PRICES THIS YEAR — ON NAME BRAND QUALITY



THIN PRICED PACKAGE SALE

RECREATIONAL

SKIS: ELAN 232 WAX OR NO WAX
BOOTS: MUNARI TOUR
BINDINGS: PINSO
POLES: EXEL NOVA
INSTALLATION
our reg. 165.00

79

REC-PERFORMANCE

SKIS: ROSSIGNOL CARIBOU
BOOTS: ALPINA SARNA
BINDINGS: VILLOM 415
POLES: EXEL NOVA
INSTALLATION
our reg. 228.00

99

PERFORMANCE

SKIS: KARHU MULTIGRADE 46
BOOTS: SALOMON SR-90
BINDINGS: SALOMON RACING TEAM
POLES: EXEL NOVA
INSTALLATION
our reg. 340.00

199

SKIS: TITAN TOUR
BOOTS: ALPINA SARNA
BINDINGS: VILLOM 335
POLES: EXEL NOVA
INSTALLATION
our reg. 192.00

89

SKIS: TRAK MARATHON
BOOTS: TRAKKER CHALLENGE
BINDINGS: TRAKKER 50/4
POLES: EXEL NOVA
INSTALLATION
our reg. 271.98

149

CROSS-COUNTRY SKIS & BINDINGS
KNEISS ELAN KARHU
ROSSIGNOL
DISPLAY OR DEMO MODELS
ONE SUPER LOW PRICE our reg. to 150.00
39

TINY INDIVIDUALLY PRICED X-COUNTRY BUYS

SKIS

ELAN R.B. OR RT.
WAXLESS our reg. 79.98
39
KARHU MULTIGRADE 52
our reg. 135.98
89
TRAK SIERRA
FOAM INJECTED NO WAX
our reg. to 99.98
69

BOOTS

ALPINA SARNA
FULL GRAIN LEATHER
our reg. 49.98
29
SALOMON SR40
RIBBED SOLE our reg. 72.00
59
TRAKKER CHALLENGE
GORE-TEX SHELL
our reg. 89.98
69

BINDINGS

PINSO SUPER
75mm ADULT
our reg. 9.98
5
VILLOM 335
75mm ALLOY
our reg. 9.98
6
SALOMON AUTOMATIC
EASY ENTRANCE
our reg. 33.00
17

ALL OTHER POLES WAXES & ACCESSORIES UP TO 60% OFF

JACKETS

HIGH SIERRA & CARIBOU
MEN'S & LADIES
CORDUROY & LTD. SIZES
19

SUITS

ODLO
LADIES SUITS
4-WAY STRETCH
our reg. 110.00
19

KNICKERS

HIGH SIERRA
CORDUROY KNICKERS
MEN'S & LADIES
our reg. 69.98
10

FRANCIAL MID-LENGTH JACKET

our reg. 160.00
79

HIVERNA 1-PIECE SUITS

MEN'S & LADIES
our reg. 139.98
69

SOCKS

SKI LECT
X/C SOCKS
our reg. 14.00
5

ALL OTHER CLOTHING UP TO 60% OFF

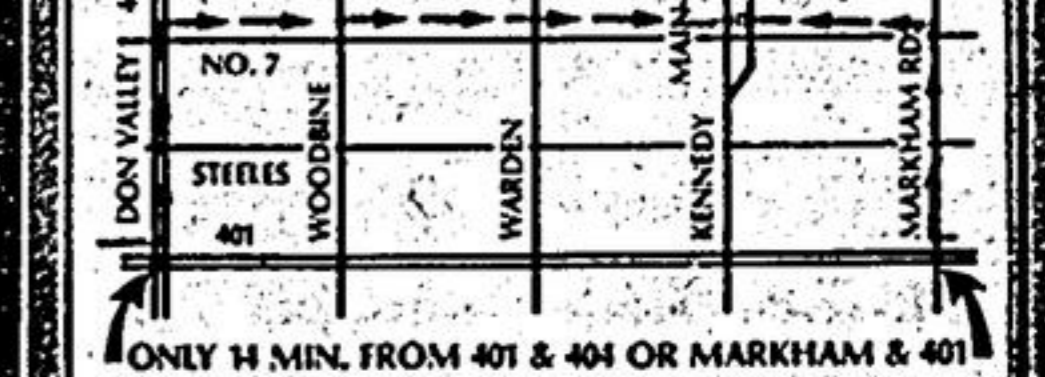
MITTS & GLOVES

OUR REG. 20-40
NOW ALL X-C
12-24

OLD FIREHALL SPORTS

170 MAIN STREET (KENNEDY ROAD) UNIONVILLE 477-4604

JUST NORTH OF HWY 7 ON UNIONVILLE'S OLD MAIN STREET MON-FRI: 10-9 SATURDAY: 10-5



Your life

Dear friends:

A few years ago, twenty women in a "Moms and Tots" group, noticed that five recent pregnancies among their members had ended either in miscarriages or birth defects. That was the beginning of Whitchurch-Stouffville's fight against toxic waste.

The environment affects us all—very personally. Maybe you think there's someone out there looking after your interests. But only you can do that.

Toxic waste isn't a distant issue. It's a dump that could drain into your town's drinking water supply.

Acid rain crosses borders and backyards.

Pesticides end up in the food you eat, or in your lungs.

Nuclear issues deal with the kind of world your children will inherit.

You may or may not have time to join environmental groups, lobby government, save a stream or wave a placard. But you owe it to yourself to know what's going on.

Sincerely,
Richard Beharriell,
Editor, Probe Post,
12 Madison Avenue,
Toronto.



Go treasure hunting

There's a treasure chest of value every week in the Classified pages of The Economist & Sun and The Tribune.

All sorts of great buys on everything you'd normally pay much more for if you bought them new!

294-2200
640-2100

Classified Advertising