



Queen's graduate

James Michael Rice recently graduated with a Bachelor of Arts degree in Economics from Queen's University at Kingston. Mr. Rice resides in Gormley and has taken a position with the General Contracting firm of James A. Rice Ltd.

Rights' speaker

Still much to be done

STOUFFVILLE — Canon Borden C. Purcell, Chairman of the Ontario Human Rights Commission, pulled no punches in his remarks from the pulpit of Christ Church (Anglican), Stouffville, Sunday.

The speaker praised Canada's role in the world struggle for justice and peace. At the same time, he criticized the treatment of native Indians and Japanese-Canadians during World War II.

With respect to Indians, he said "this is no jewel in Canada's crown". Of Japanese-Canadians, he called their treatment "inhuman".

"We must do a great deal of soul-searching in this regard," he stated.

Canon Purcell challenged the congregation to show a greater respect for New Canadians; for women in the work force; for the elderly and the handicapped.

The speaker pointed to the fact only three handicapped persons had been hired by Metropolitan Toronto over a period of ten years. Last year, however, 85 were hired and their employers are extremely pleased, he said.

The Human Rights advocate dealt the Anglican Parish a rap on the knuckles for its slow-to-action response on equality for women. "We, let the women, raise the money, but we don't let them spend it," he stated. He chided the church, claiming if Eaton's and Simpson's treated women so unfairly, they'd be charged.

Canon Purcell said too often, individuals throw up their hands in despair, saying "what does it matter?"

"The struggle," he concluded, "involves each one of us".

Dining with Cal

BY CAL AVERY

I'm firmly convinced that we in the York-Durham Regions can survive! After fifteen years of business travel, it's been my good fortune to experience some of the finest eating places in Ontario. In a series of articles, Cathryn and I hope to share with you, some of the likes (and dislikes) related to restaurants in this area.

First, I ask you to think of me, not as a connoisseur but more of a tour guide as we drop in on these establishments and attempt to impart our feelings to you the reader.

This week, we'll visit the Deer Park Inn, a secluded, warm and very diversified place. One finds a touch of class with the very elegant old-world furnishings nestled in the warm glow of a stone fireplace.

If reservations are not made, you may sit in the comfortable lounge area, while awaiting a table. Part of the pleasant evening is the hospitality offered by hosts Eric and Marg Farrell. Dinner here is not rushed but very relaxing. A tangy shrimp cocktail following the usual before-dinner drink, sets the mood.

The steak, medium well-done, seems to be a house specialty as well as a delicious offering of surf and turf enjoyed by Cathryn. The tender eight-ounce lobster tails and melt-in-your-mouth filet mignon are surrounded by perfectly cooked fresh vegetables. Complimented with a bottle of Prince de Galles Anjou, the main course is exquisite.

Other diners seem to enjoy a fine fare of succulent rack of lamb.

Following the superb dinner, a delightful offering of tantalizing cakes and pastries are presented. Instead, we elect to go downstairs where a five-piece band entertains, and people feel comfortable dancing or lounging in high-backed chairs. The music is contemporary and this very professional band has offered many enjoyable evenings to the public since the opening of Deer Park, seven years ago.

Ladies and gentlemen, may I say, though the attire is formal, prices are reasonable for family dining or that special personal occasion. Prices for two, with drinks, range from \$40 to \$50. The location is Concession 10, Whitechurch-Stouffville, a mile north of Main Street. Next week our tour will take us to the Old Country Inn at Unionville.

UXBRIDGE MEMORIAL COMPANY

MEMORIALS OF DISTINCTION
GRANITE MARBLE
BRONZE



CEMETERY LETTERING & RENOVATIONS CUSTOM DESIGNING & LETTERING

Quality & Satisfaction assured by our own Written Guarantee

Owned and operated by Reg & Clara Tomkinson

Home appointments and transportation by request

852-3472

108 BROCK ST. WEST

UXBRIDGE FOR PERSONAL SERVICE VISIT OUR SHOWROOM

STOUFFVILLE DISTRICT CREDIT UNION Official Notice - 1983 Annual Meeting

Monday, November 28th, at the Stouffville Legion Hall
DINNER AT 6:30 P.M. MEETING AT 8:00 P.M.

Guest speaker Mr. Len Cullen, Weall and Cullen Nurseries. We are very fortunate to have the services of LEN CULLEN, from the FAMOUS WEALL AND CULLEN GARDENS, as this year's speaker. Len, as you may know is renowned for his refreshing outlook on life and as a speaker is in great demand by the many thousands who make up his faithful following.

- THE PURPOSE OF THE MEETING IS TO:**
1. Receive the Annual Report and Reports of the Board of Directors, Credit and Supervisory Committees.
 2. Appoint Auditors for 1984.
 3. Election of Board of Directors and Committee Officers.
 4. Consider and approve a general by-law amendment to increase mortgage and commercial loan lending limits.
 5. Address other properly presented business.
- PLAN TO ATTEND YOUR CREDIT UNION'S BUSINESS & SOCIAL EVENT OF THE YEAR!**

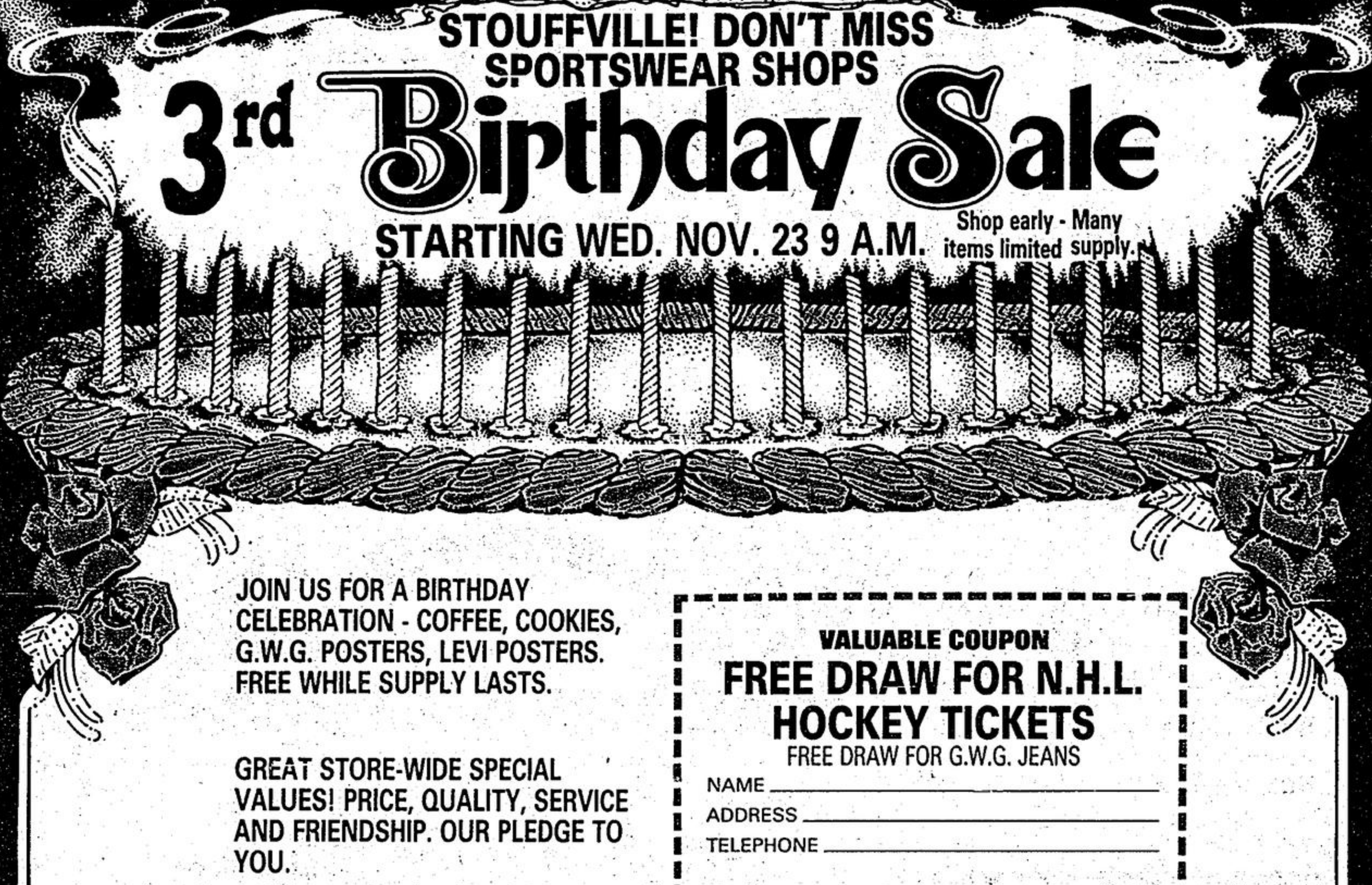
THE CREDIT UNION BELONGS TO YOU AND ME



STOUFFVILLE! DON'T MISS SPORTSWEAR SHOPS

3rd Birthday Sale

STARTING WED. NOV. 23 9 A.M. Shop early - Many items limited supply.



JOIN US FOR A BIRTHDAY CELEBRATION - COFFEE, COOKIES, G.W.G. POSTERS, LEVI POSTERS. FREE WHILE SUPPLY LASTS.

GREAT STORE-WIDE SPECIAL VALUES! PRICE, QUALITY, SERVICE AND FRIENDSHIP. OUR PLEDGE TO YOU.

VALUABLE COUPON FREE DRAW FOR N.H.L. HOCKEY TICKETS

FREE DRAW FOR G.W.G. JEANS

NAME _____
ADDRESS _____
TELEPHONE _____



SPORTSWEAR SHOP & GWG PARTNERS IN RETAIL - ALL THE WAY!

FREE! WITH PURCHASE OF \$50.00 MERCHANDISE OR OVER 1 G.W.G. WESTERN BUCKLE ONE PER PURCHASE WHILE SUPPLY LASTS

HUGE ASSORTMENT OF LADIES SWEATERS BLOUSES, LINGERIE SUPERB VALUE & SELECTION. "IDEAL CHRISTMAS GIFT"

ANY SALE ITEM MAY BE RETURNED FOR EXCHANGE OR CREDIT NOTE

GWG BOOT CUT STRAIGHT LEG DENIM JEANS Men's 32 to 36 sizes 16⁰⁰ SPECIAL	G.W.G. DENIM VESTS Sizes 34 to 48 7⁰⁰ SPECIAL	UNBELIEVABLE! G.W.G. LADIES DENIM DRESS BIB OVERALLS Sizes 26 to 36 9⁹⁹ SUGG. LIST 34.95 SPECIAL
G.W.G. DENIM OR CORD JEANS 7 to 18 2 31⁰⁰ PR. \$16.99 PR.	"LEVI" 2PC. JOGGING SUITS Fleece Lined. 8 to 18 Heather Blue 15⁰⁰ SUPER SPECIAL SUIT	"LADY STANFIELD" SUNBLAZER SWEATSHIRTS 4 Shades LESS THAN HALF PRICE 7⁰⁰ EA.
MEN'S INSULATED GREB BOOTS Steel Toe & Sole Green Patch - 6 to 11 58⁰⁰	CHILDREN'S EXTRA HEAVY LEOTARDS 1 to 14 - 4 shades 2⁹⁹ PR.	MEN'S QUILTED SHIRTS With snap fronts 18⁹⁵ S., M., L., XL.
CHILDREN'S "LEVI" JEANS Famous "505" Red Tag 8 to 12 2 31⁰⁰ PR. \$16.99 PR.	MEN'S G.W.G. CORD PANTS 5 shades, 28 to 38 2 45⁰⁰ PR. \$23.95 PR.	LADIES ZIPPER JACKET JOGGING SUITS 4 shades S., M., L. 17⁰⁰ SUITS
STANFIELD THERMAL TURTLE NECK SWEATERS S., M., L. Reg. \$14.00 ea. 7⁰⁰ SPECIAL	BAUER TRACK SHOES SUPER SPECIAL Children's 11 to 6 Adults 6 1/2 to 12 19⁹⁹ 22⁹⁹	MEN'S WOOL JAC SHIRTS Toasty warm! S., M., L. XL 14⁹⁵ 16⁹⁵
LADIES GORGEOUS PERFECT FIT STRETCH POLYESTER SLAX 5 shades - 8 to 20 16⁰⁰ SPECIAL	LADIES 2 PC. ACRYLIC CASUAL SUITS Zip Jacket 3 shades 20⁰⁰ SUPER SPECIAL	
BIG BEAUTIFUL EAR MUFFS 6 Shades 2⁹⁸	MEN'S BLACK LEVIS #619 JEANS 28, 31, 34 & 36 waists Reg. \$34.95 16⁰⁰ PR.	

We carry in stock Sizes from 2 to 60 G.W.G. Western & Work Shirts to 20 1/2 neck. Briefs & T-Shirts to 5x Fantastic Savings

SPORTSWEAR SHOP
24 WESTLAWN CR., STOUFFVILLE 640-5111