

Area exhibitors do well at Royal Winter Fair

Again this year, area exhibitors have enjoyed excellent success at the Royal Agricultural Winter Fair.

The show continues through Nov. 19. In 4-H Field Crop competition, Allin Lewis of R.R. 2, Markham has won the plaque donated by Stewart Seeds for his first place entry in Six-Rowed Barley. Murray Norton of R.R. 1, Goodwood, has been similarly honored for his exhibit of seed potatoes.

In the same Six-Rowed Barley class, Tony Kersten of Port Perry placed third and David Ball of Uxbridge, sixth.

In the class for Two-Rowed Barley, Brian Lewis of Markham was second; Russ Brown, Unionville, fourth and Don Smith, Markham, fifth.

Burke Pugh of R.R. 1, Locust Hill was ninth with his entry of corn.

Other exhibitors from the area follow: Bruce Risebrough, Markham, second-cut hay (9th); Carolyn and Grant Davidson, Stouffville, first-cut hay (4th); Davidson Bros., Stouffville, first-cut hay (6th); Carolyn and Grant Davidson, Stouffville, red clover (6th); Davidson Bros., Stouffville, white winter wheat (9th); Allin Lewis, Markham, six-rowed barley, (2nd); Davidson Bros., Stouffville, six-rowed barley, (5th); Trevor Watson, Markham, six-rowed barley, (6th); Davidson Bros., Stouffville, two-rowed barley, (3rd); Brian Lewis, Markham, two-rowed barley, (4th); Russ Brown, Unionville, two-rowed barley, (6th).

Ivan and Lillian Norton, son Murray and daughter Marion of R.R. 1, Goodwood, won several prizes in potato and vegetable classes. Also "in the money" with entries were

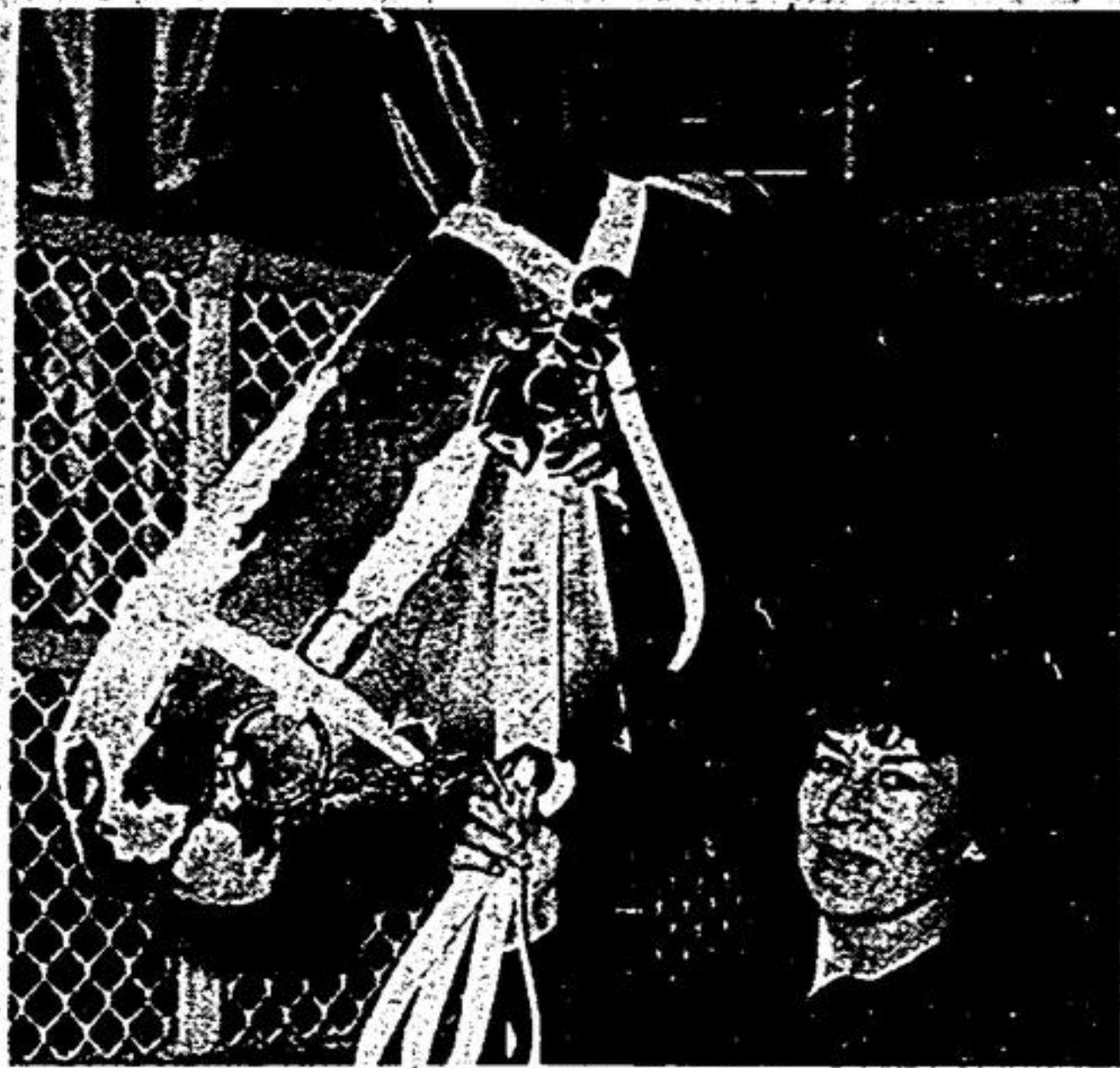
Mark Hendy and Tom Smith of R.R. 1, Claremont.

Murray Norton was a champion in the half-bushel carrot class.

In classes for heavy horses, Murray Grove and Victor Wilson of Stouffville, (Belgians); Gordon Lewis of Unionville, (Clydesdales) and Don Tribbling of Uxbridge, (Percherons), all captured ribbons in various categories.

Judith (Grove) Saunders, formerly of Markham and now of Omamee, won the Canadian-Owned Belgian Class with her horse "Rocky".

The Danny Grove Memorial Trophy, donated by Murray and Marion Grove of R.R. 2, Stouffville, in memory of son Danny, was won for the second year in a row by Carlsberg of Schomberg.



Judy (Grove) Saunders, formerly of Markham and now of Omamee and her Canadian Belgian Champion, "Rocky" at the Royal Winter Fair.

A need?

STOUFFVILLE — The Stouffville Family Life Centre has been asked to initiate a sign-language course for persons interested in learning this skill in dealing with their own deafness and/or working or living with deaf persons.

In order to commence classes in Stouffville, the Canadian Hearing Society requires at least ten interested people.

The contact number is 640-2123.

When the required numbers are in touch with the Centre, a date, location and fee will be advertised in The Tribune and all persons will be contacted.

—Jim Thomas.

SAVE WITH SAFECO INSURANCE

The Insurers
 4461 NO. 7 HWY.
 UNIONVILLE

INSURANCE FOR
 HOME LIFE
 AUTO BUSINESS
 477-5000

X-RAY ASSOCIATES
 are pleased to announce the addition of X-RAY and Ultra sound to their Nuclear Medicine Service at

The Markham Diagnostic Centre
 111 Main St. N., Markham
 Phone: 294-9801

Stouffville Bakery Specials!
 (Nov. 16-26)

White Bread 450 g. 49¢	Kaiser, Sesame or large crusty Rolls \$1.09/DOZ
Mince Meat Tarts \$2.39/DOZ	Christmas Cakes 10% off (during Nov.)
Christmas Puddings small \$2.29	large \$3.29

Clip this coupon and **SAVE \$1.00** ON ANY GINGERBREAD HOUSE Small \$13.99 Large \$19.99 (Valid until Nov. 30)

STOUFFVILLE 57 Main St. W. 640-3146
 MARKHAM Sherwood Plaza 294-1673

THE PLANNING ACT AND THE PARKWAY BELT PLANNING AND DEVELOPMENT ACT
 Town of Markham

Take notice that application for amendment to the Parkway Belt Land Use Regulation filed as Ontario Regulation No. 473/73 in the Town of Markham has been received.

Applicant: Markham Board of Trade
 File No: 11(145)
 Proposal: To permit the placement of a temporary mobile office trailer on lands leased from the Ministry of Government Services on Woodbine Avenue, immediately north of B & M Motors Ltd., Part of Lot 8, Conc. 3.

All submissions received in the office of the Minister of Municipal Affairs and Housing, Plans Administration Branch, 777 Bay Street, 14th Floor, Toronto, Ontario M5G 2E5 on or before the 30th day of November 1983, dealing with this application will be considered before a final decision is made. Under Section 46 (10) of the Planning Act 1983, any interested person may request a hearing by the Ontario Municipal Board on an application for amendment to the Provincial Land Use Regulation.

Ministry of Municipal Affairs and Housing
 Ontario Claude Bennett, Minister



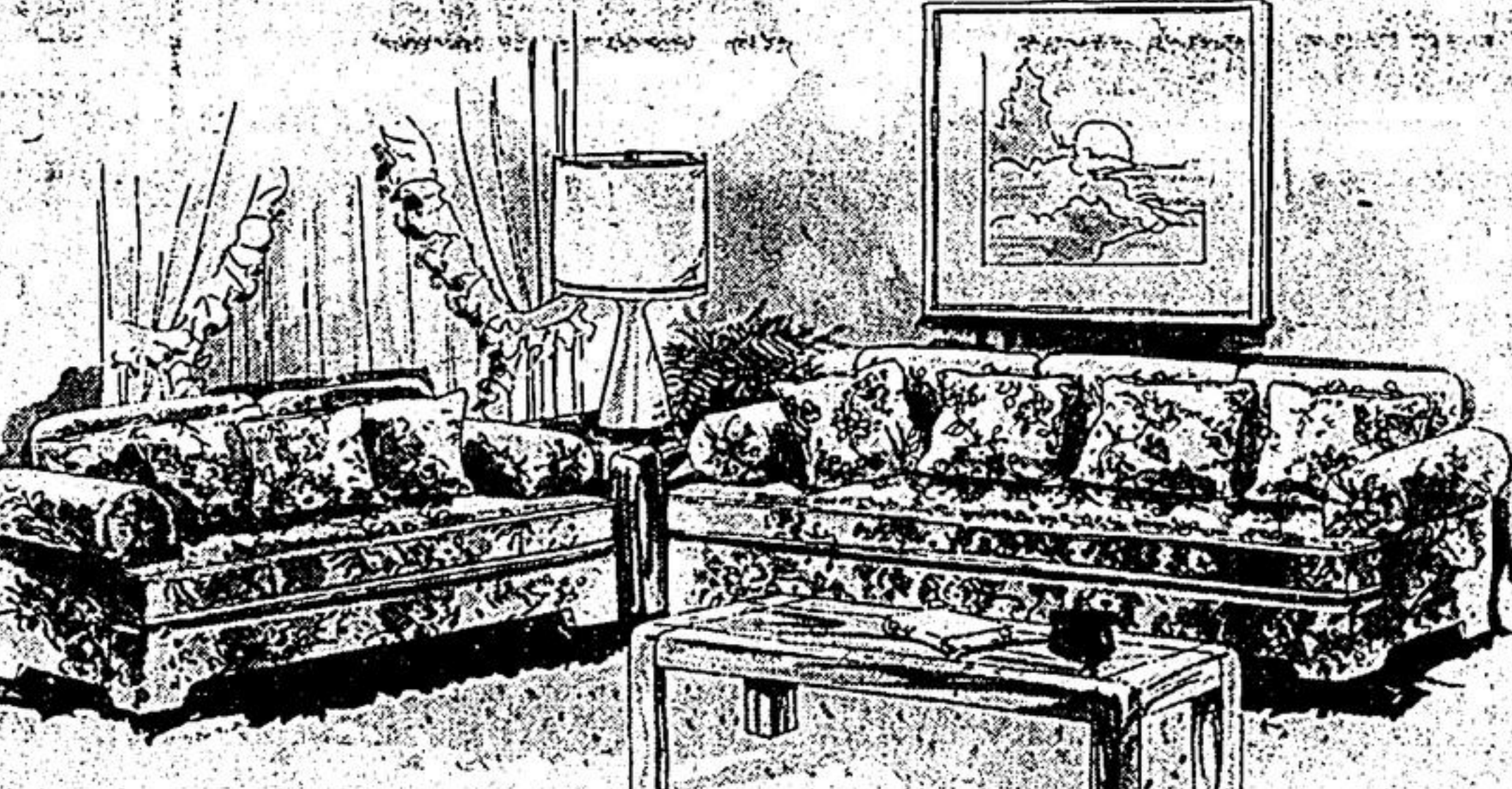
Pascal Furniture and Appliances

Contemporary Bedroom Suite by Unique



"Rally" by Unique is casual but tailored, a style that appeals to today's contemporary needs. This exquisite bedroom ensemble is made of oak solids and pecan veneers, enhanced by the crispness of straight lines and the symmetry of proportion. Only a touch of burnished brass hardware, a finish soft and warm with a resulting low sheen patina complete Unique's presentation of "Rally" into the world of casual but sophisticated living.

- | | | | |
|--------------------------|-------------------------|--------------------------|--------------------------|
| Dresser | Wing Mirror | Drawer Chest | 5 Pce Wall System |
| 1299⁸⁸ | 469⁸⁸ | 1299⁸⁸ | 3699⁸⁸ |



Traditional Living Room Set with the "Concept Collection"

Once again, extra true value savings only Pascal's volume buying power could make possible. This traditional sofa/loveseat combination from the "Concept Collection" will grace your living with impeccable style. It's smart seating that lets you relax in comfort and style whether you're unwinding from a busy day or entertaining friends. Features loose pillow back seating, roll arms, and is covered in a long-wearing 100% cotton fabric.

- | | |
|----------------|-------------------------|
| Sofa | 589⁸⁸ |
| Loveseat | 499⁸⁸ |

"Champlain Collection" Tables by Craftline

To finish a room as beautifully as you started it, here is the solution... this grouping by Craftline. Made of solid maple matched with fancy-cherry veneer tops, these tables feature magnificently carved legs and rails that give them a look of distinction that you will treasure for years to come.

- | | |
|-------------------------|-------------------------|
| A. Drawer End Table | B. Dressing End Table |
| 239⁸⁸ | 249⁸⁸ |
| C. Oval Coffee Table | |
| 289⁸⁸ | |



Contemporary Bed by Amisco

Amisco has created the bed that we feel should become the focal point of your bedroom. Its classic charm in a contemporary mood that blends stunningly with any decor. The brass finished finials atop sturdy steel tubing add a touch of stately elegance to this exceptional linear design. Available in a black or white acrylic baked enamel.

- | | |
|-------------|-------------------------|
| Single Size | 249⁸⁸ |
| Double Size | 279⁸⁸ |
| Queen Size | 309⁸⁸ |

Juvenile Bedroom Grouping by Amisco

Amisco has the juvenile bedroom solution. This grouping is a unique practicality for the way we live. All pieces are made of tubular steel that is both sturdy and fun. The finish is bright red or yellow acrylic baked enamel. The artist table is covered with a white laminate finish. For the bunk bed, mattress and bedspread are extra.

- | | |
|---------------------------------|----------------------------|
| A. L-Shaped Bunk Bed | 299⁸⁸ |
| B. Adjustable Large Shelf Extra | 45⁸⁸ ea. |
| C. Adjustable Small Shelf Extra | 32⁸⁸ ea. |
| D. Adjustable Artist Table | 89⁸⁸ |
| E. Adjustable Roller Chair | 88⁸⁸ |

Pascal West Mississauga **275-2980**
 Highway 10 between 401 and Eginton

Late Night Shopping
 Open Monday through Friday from 10:00 a.m. to 9:30 p.m. Saturdays from 9 to 6. Major Credit Cards Welcome.

Pascal East Scarborough **292-9200**
 Corner Markham Road and Finch Avenue

