



Ten blooms plus

Audrey Hamlin, Edward Street, Stouffville, has a green thumb. Everything she plants "comes up roses" or, in this case, geraniums. The family's home is a town beauty spot. This particular geranium has no less than ten blooms with nine more on the way.

**Shopping Plaza
New stores**

STOUFFVILLE — A site plan application for a proposed addition to the Stouffville shopping plaza at 399 Main Street West was referred to committee for further study by Stouffville's Planning Committee last Tuesday.

The owners of the plaza, Southwick Investment Ltd., have proposed a two-store addition which would be located at the south-east end of the plaza beside the

present Brewers Retail store.

Robert Bradley, a Southwick representative, said the Stouffville restaurant also wants to expand so they want to block the pedestrian walkway between the Liquor Licencing Control Board and the restaurant.

"It means closing off that portion of the mall," said Mr. Bradley. Mayor Eldred King stated his con-

cerns about the traffic and pedestrian flow on the eastside. "We're concerned about the east entrance... there should be some improvements."

"I don't think there's anyway of moving the entrance closer to the intersection," said Mr. Bradley. Committee members agreed to have engineers examine the proposed site plan for sidewalk location and traffic flow.

Who cares?

Dear Editor: When there was fear of water pollution in Whitechurch-Stouffville, many residents became extremely vocal, demanding a solution to the problem.

Here in Claremont, many wells ARE polluted,

but to date, no one (to my knowledge) has offered any solutions.

What are we supposed to do? Do our municipal politicians not realize the seriousness of the situation? Not only is our health threatened but our

properties aren't worth a plugged nickel as long as this condition continues. We all seem very important prior to an election but when faced with a problem, we're virtually ignored.

Sincerely,
Kathleen Wilton,
Claremont.



Horse-rider enhance parade

On July 31, summer residents at Cedar Beach, Mus-selman's Lake, organized a colorful parade with many families taking part. One of the participants was lovely Dana Randolph, R.R. 1, Gormley, aboard her equally lovely horse "Dana".

—Jim Thomas

centre ice
3550 Victoria Park Ave.
WILLOWDALE
POWER SKATING SCHOOLS
AUGUST SPECIALS
5 day intensive course
• Aug. 22 - Aug. 26
• Aug. 29 - Sept. 2
FOR BROCHURES CALL
497-4545

NASHHEAD
NORTH
7276 Woodbine
476-6405
HAPPY HOUR
SUN. - TUES.
ALL NIGHT
HONEYMOON SUITE
& IRA BROWN
AUG. 10
FRANKS SODA
AUG. 11
LYDIA TAYLOR
Juno Awards Winner
AUG. 12
CHAMPION
& EVEREST
AUG. 13
ROCK VIDEOS
SATELLITE SPORTS

**BUYING OR SELLING
TURN TO THE
CLASSIFIEDS**

TO PLACE YOUR AD, CALL TODAY
MARKHAM 294-2200
STOUFFVILLE 640-2100

**THE ADVANTAGES
OF OUR ADJUSTABLE RATE
MORTGAGE...EVEN WITH
INTEREST RATES LOW AGAIN**

11%
2 OR 3-YEAR TERM
ADJUSTABLE RATE

If you are looking for a mortgage, Royal Trust's Adjustable Rate Mortgage could offer several advantages over a fixed-rate mortgage. The interest rate, based on bank prime rates, will fluctuate over the term, but the monthly payment*, in most circumstances, would remain constant.

- If rates continue to go down, the overpayment will reduce the principal.
- If rates begin to rise, you have three choices. You could maintain the monthly payment level and have the shortfall in interest added to the principal.
- You can choose to pay the shortfall in interest and maintain the principal of your Adjustable Rate Mortgage at its present level.
- Or you could pay off your entire Adjustable Rate Mortgage on any payment date, without penalty, and apply for a fixed rate mortgage. Appraisal and legal fees would apply to the new mortgage.
- If you are looking for a mortgage, have 30% equity in your home and meet other mortgage requirements, you may qualify for our Adjustable Rate Mortgage. For full details, contact our Mortgage Loans Officer.



For mortgage rates please call our quote line 867-3653.
For further information please call 867-2224.

*Calculated monthly, not in advance, rates subject to confirmation.

"RACQUETBALL"

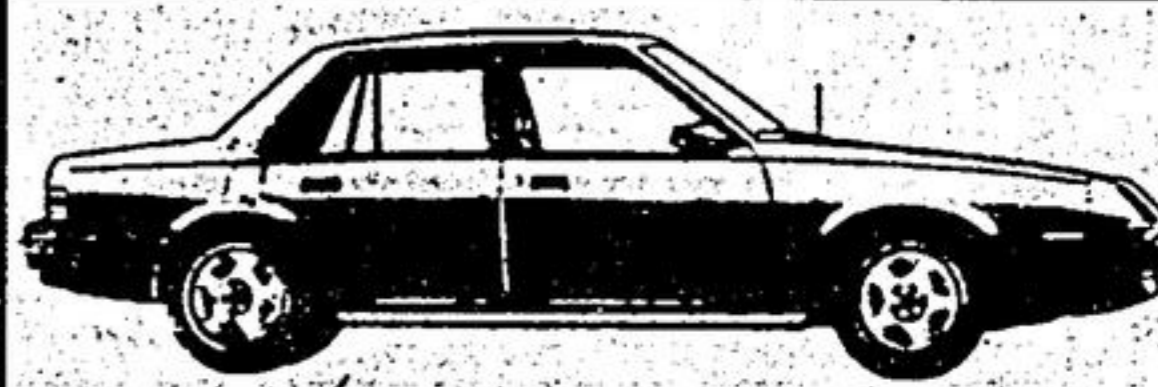
\$160 Per Year
plus court fees

MAYFAIR RACQUET CLUB

- *9 Racquetball Courts
- *Whirlpools, Saunas, Gym
- *Licensed Lounge

Tennis and Squash Memberships Also Available!

475-0350



CAR CARE GUIDE

W.D. STEWART AUTO BODY

Complete Body and Collision Repairs
Acrylic Enamel & Lacquer Painting
COURTESY CAR AVAILABLE
COMPETITIVE RATES

Phone 294-4533
and ask for Walt

WALTER STEWART HAS BEEN
A RESIDENT OF MARKHAM

FOR 34 YEARS AND IS COMMITTED TO SERVING YOU!
R.R.#1 MARKHAM, BOX GROVE

SEE THE NON-ADVERTISED IN-STORE SPECIALS
On sale at most of our stores. While stocks last.

SIZZLER OF A SALE

LITE SAVE 9.00 ON THIS RESIDENTIAL
ABS PLASTIC END CAPS
24-Ft. Lightweight Aluminum Ladder
Features patented SAFE-T-BOND rung-to-rail joints with automatic spring loaded safety locks. Includes polypropylene rope and pulley.
78.95 Our Reg. 87.95

DEPT 280
10'x9' SPACEMAKER STEEL GARDEN SHED
White Stocks Last!
496 cu. ft. storage area with lots of headroom. Over 6 1/2 feet peak height inside. Woodgrain embossed panels; famous Stelcolour finish throughout.
SAVE 40.00! Our Reg. 339.95 **299.95**

Comes in easy to install 12' width
DEPT. 302
ARTIFICIAL GRASS LUSH GREEN
100% polypropylene. Fade & stain resistant. Looks new season after season.
OUTDOOR CARPET 3.99 SQUARE METRE

"K.S.H." ROOF LOUVRES
#40 **8.99** #64 **9.95**
Smooth non-corrosive aluminum. Model 40 (17 1/2" Dia.) now only 8.99! Model 64 (18"x22") is now 9.95 DEPT. 473

4x8 WAFERBOARD SHEET 7/16" 8.99
Wall sheathing for new construction and re-modelling work. Dept. 160.

CASHWAY BUILDING CENTRES
8:30 A.M. - 6:00 P.M.
SATURDAYS till 5:00
THURS. & FRI. till 9
IN SOME AREAS, THESE HOURS VARY SLIGHTLY. PLEASE CHECK
4414 Steeles Ave. E. Scarborough Ont. 477-4461
Hwy. 7 & 12 Brooklin 655-3313
DELIVERY IS AVAILABLE

Home Improvements 704
ADAMS PROPERTY MAINTENANCE
683-8589
RESIDENTIAL & COMMERCIAL
• CLEANUPS • LANDSCAPING
• FERTILIZING • CEDAR HEDGES
• MOWING • RAILWAY TIES
Insured
FREE ESTIMATES
683-8589

Cambridge ELECTRICAL Services
MILESTONE SERVICES
ELECTRICAL DESIGN
SERVICE & INSTALLATIONS
COMMERCIAL - INDUSTRIAL
RESIDENTIAL
R.R. 3, Stouffville, Ont. John Miles LOH 110 640-3740
Market Basket 743

LAPP'S
Pick Your Own Vegetables
Hours 8:30 to 6:30
Closed Monday
478-2386
Queensville

IGA
THIS WEEK'S SPECIALS at **STOUFFVILLE I.G.A.**
Brookside Bread 454 grms 49¢
Fresh Loin Centre Cut Pork Chops 373 kg \$1.89 lb
B.B.Q. Loin
From our Deli Burns Slice Ham \$2.16 lb.

PICK YOUR OWN PLUM TOMATOES BY THE BUSHEL-\$6.00
—PICKLING CUCUMBERS—
—EGGPLANT—
—ZUCCHINIS—
—GREEN & WAX BEANS—
—VEGETABLE MARROW—
ROMANO BEANS (Fagoli-Romani)
FRESH CORN
MARKHAM GARDENS
LOCATION: 1 1/2 miles north of No. 7 Highway, on the west side of Highway 48 (Markham Road) across from Ford tractor dealer. Look for big sign Beans, green & wax. Or for picking information. please call
294-6397