



**Children enjoy "Concert for Kids"**

Rev. Ted Creen (left) of St. James Presbyterian Church and Rev. Philip Poole of Christ Church Anglican, Stouffville, held another "Concert for Kids" in Latham Hall, Saturday, with a portion of the proceeds going to the Town Recreation Centre Fund. Here, the two pastors serenade four-year-old Amy Sled, daughter of Mr and Mrs George Sled, Maystone Court, Stouffville.

SAVE - SAVE - SAVE  
\$-\$-\$-\$-\$-\$-\$-\$

**Spring Sale**

YOU SAVE MORE AT THE SWEATER LADY'S



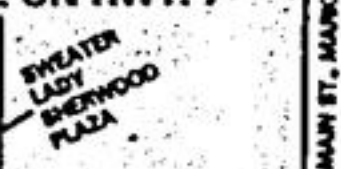
LADIES GABARDINE  
**SLACKS** 9.99  
elastic back, fly front  
reg. to 29.99  
special this week

\*\*\*\*\*  
LADIES  
**KNITTED TOPS** 7.99  
short sleeve, very attractive for spring wear, 1/2 dozen styles to choose from. Sizes small, medium & large to size 44.  
regular to 15.99  
special this week

NOW AT OUR NEW LOCATON!

THE **SWEATER LADY** 294-1106

SHERWOOD PLAZA  
JUST WEST OF HWY. 48  
NORTH SIDE ON HWY. 7



**GIANT PANSIES**

LOADED WITH BUDS AND BLOOMS  
Plant Now! These showy plants are absolutely hardy and will stand up to heavy spring freezes to bloom and bloom till late fall.

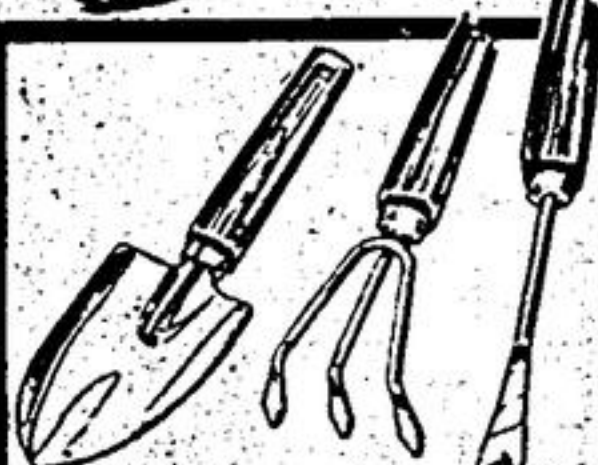
**66¢**

PER BOX OF 4 PLANTS

1 WEEK ONLY  
LIMIT 12  
PER CUSTOMER



RUSTIC WOOD BARREL 8.88



QUALITY HAND TOOLS 99¢

**INSTANT LANDSCAPING WITH JUNIPER SPECIMENS**

**\$5.00 off**



Top size plants-grown to perfection. Full-size for "instant landscaping" when you plant. Container grown to insure trouble-free transplanting.

**PYRAMIDAL...4.5 ft. tall**  
Entire selection of reliable varieties, including: Blue Haven, Spartan, Grey Gleam, Blue Point, Sky Rocket.  
reg. 28.95 to 39.95

SALE 23.95 to 34.95

**SPREADERS...2.3 ft. wide**  
All your favourites including: Andora, Heitz, Blue Danube, Gold Coast, Mint Julep.  
reg. 19.95

SALE 14.95

100% GUARANTEE



**FLOWERING SHRUBS**

- DOUBLE RED FRENCH LILAC Beautiful clusters of fragrant, double flowers in lavender, red or white. 7.98
- MOCK ORANGE DOUBLE Snow white fragrant flowers bloom in June. 5.98
- MOCK ORANGE GOLDEN Shrub with bright lemon-yellow foliage. Terrific accent plant. 6.98
- POTENTILLA GOLD DROP Brilliant yellow flowers from June to September with buttercup yellow flowers. 5.98
- ROSE TREE OF CHINA Double, deep lavender pink blooms, absolutely hardy. 10.95
- SPIRAEA BRIDAL WREATH Gracefully arching branches with clusters of white flowers in May. 4.98
- TAMARISK PINK CASCADE Unusual shrub with feathery foliage and masses of rosy pink flowers in July and August. 5.98
- HIGHBUSH CRANBERRY Strong growing shrub, blooms creamy white flowers, followed by bright red berry clusters, right into the winter. 5.98
- DOGWOOD SILVERLEAF Striking silver foliage gives impression of white blooms through out the season. Will thrive in sun or half-shaded areas. 6.98
- FORSYTHIA LYWOOD GOLD Brilliant yellow flowers, early bloomer. 5.98
- JAPANESE QUINCE Large masses of red or orange flowers, early bloomer. 5.98
- JAPANESE SNOWBALL Spectacular shrub with snowball like white flowers in May. 5.98
- WICKELIA BRISTOL RUBY Ruby red flowers bloom again in August and September. One of the hardiest. 5.98
- PURPLE PURPLE Easy trailing variety. Thin shelled with good eating qualities. Develops into broad shrub 8 ft. high. 9.98



**FINAL WEEK FERTILIZER SALE 20-40% OFF**  
Sale ends April 30

- CATTLE MANURE**  
Weed free composted odorless reg. 4.99 SALE 3.88
- PEAT MOSS**  
5 cu. ft. bale reg. 9.99 SALE 7.88
- SCOTTS**  
Turf Builder reg. 17.95 SALE 14.36  
Turf Builder Plus halts reg. 32.98 SALE 26.36
- SO GREEN**  
Premium 21-7-7 18 kg. reg. 24.99 SALE 14.99  
Weed & Feed 18 kg. reg. 24.99 SALE 14.99
- Premium Crabgrass Control**  
10 kg. reg. 39.99 SALE 27.99
- CIL**  
Golfgreen 14 kg. reg. 17.99 SALE 14.36
- WHITE ROSE IRON PLUS**  
Lawn Food 20 kg. reg. 19.99 SALE 14.99
- Weed & Feed 20 kg.**  
reg. 24.99 SALE 18.74

**White Rose** OPEN SUNDAY  
CRAFTS & NURSERY HOURS: Mon. to Fri. 9:00 a.m. to 9:00 p.m.  
Sat., Sun. & Holidays 9:00 a.m. to 6:00 p.m.

**UNIONVILLE**  
No. 7 Highway  
East of Woodbine Ave.

Sale ends April 26. We reserve the right to limit quantities.

**NOW OPEN IN MARKVILLE: THE BABY'S ROOM**

SERVICES AVAILABLE ~

- ① Installation-window treatments  
-Wallpapering  
-Painting  
-Decorating Consultations
- ② Rentals  
- porta-cribs  
(and other articles, by demand)
- ③ Gift Certificates  
- Gift Wrapping
- ④ Baby Registry

**The Baby's Room**

WHAT WE ARE ~

We are a one-of-a-kind, one stop shop for all the needs of the baby's room... and MORE

**BUNTING BAGS**  
Reg. \$40 - \$60  
SALE!  
\$18. - \$32.

WHAT WE HAVE

We have... quilts, bumpers, sheets, skirts, canopies, pillows, diaper stacks, wall hangings, growth charts, chair pads, kickers, bibs, bags, mobiles, gift baskets, cots for both babies and juveniles in mix and match coordinates. We also have matching window treatments, special wallcoverings and paint. Our Baby and Juvenile furnishings are the best available.

**QUILTS**  
Reg. \$50 - \$80.  
SALE!  
\$22. - \$48.

**BUMPER PADS**  
Reg. \$32 - \$35.  
SALE!  
\$21.75

**FITTED SHEETS**  
14 COLOURS  
Reg. \$14  
SALE!  
\$9.50

WE ARE THE ADVOCATES OF HIGH QUALITY ITEMS AT AFFORDABLE PRICES

Markville Shopping Centre

HIGHWAY #7 & McCOWAN RD.  
UPPER LEVEL - PHONE 475-9937