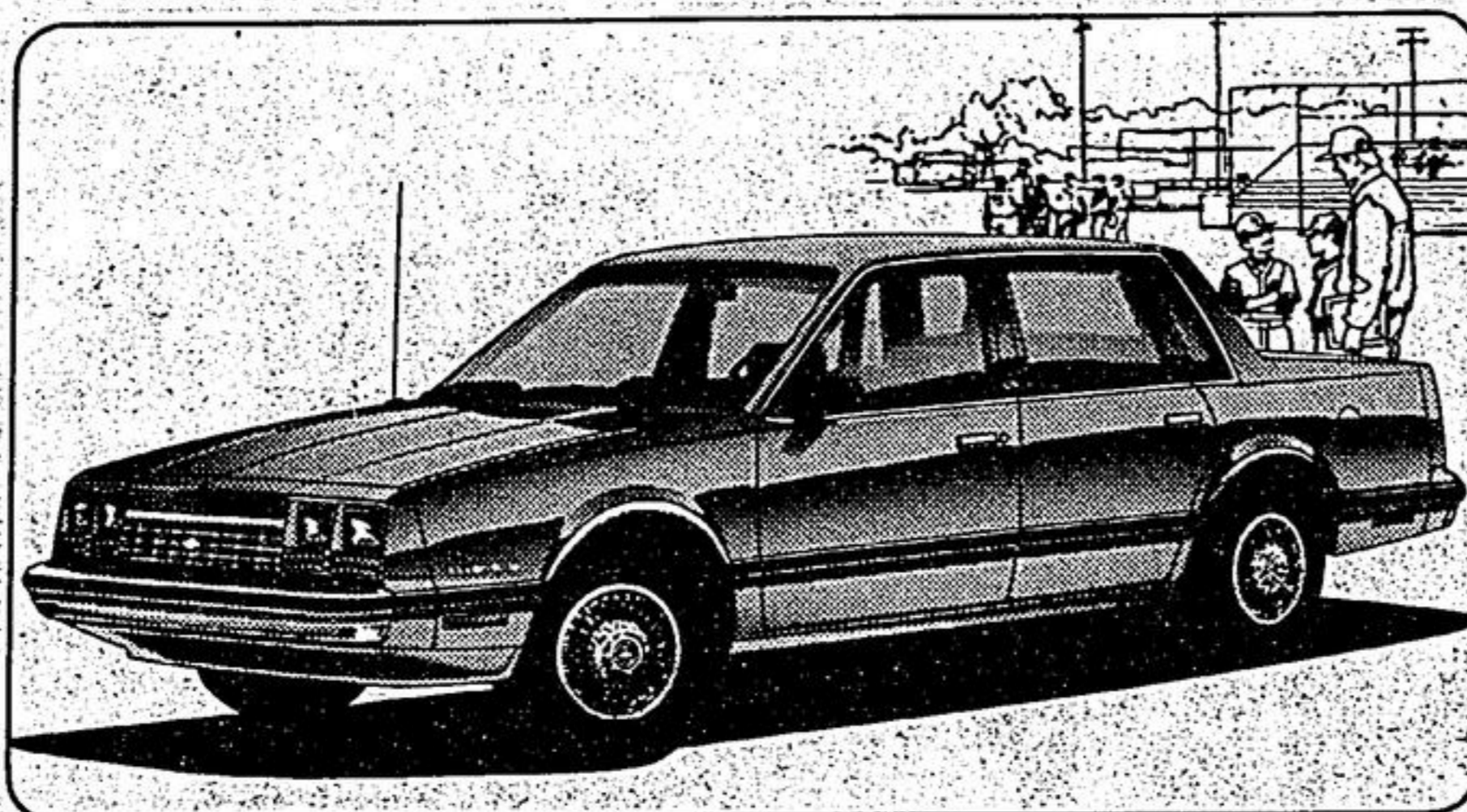
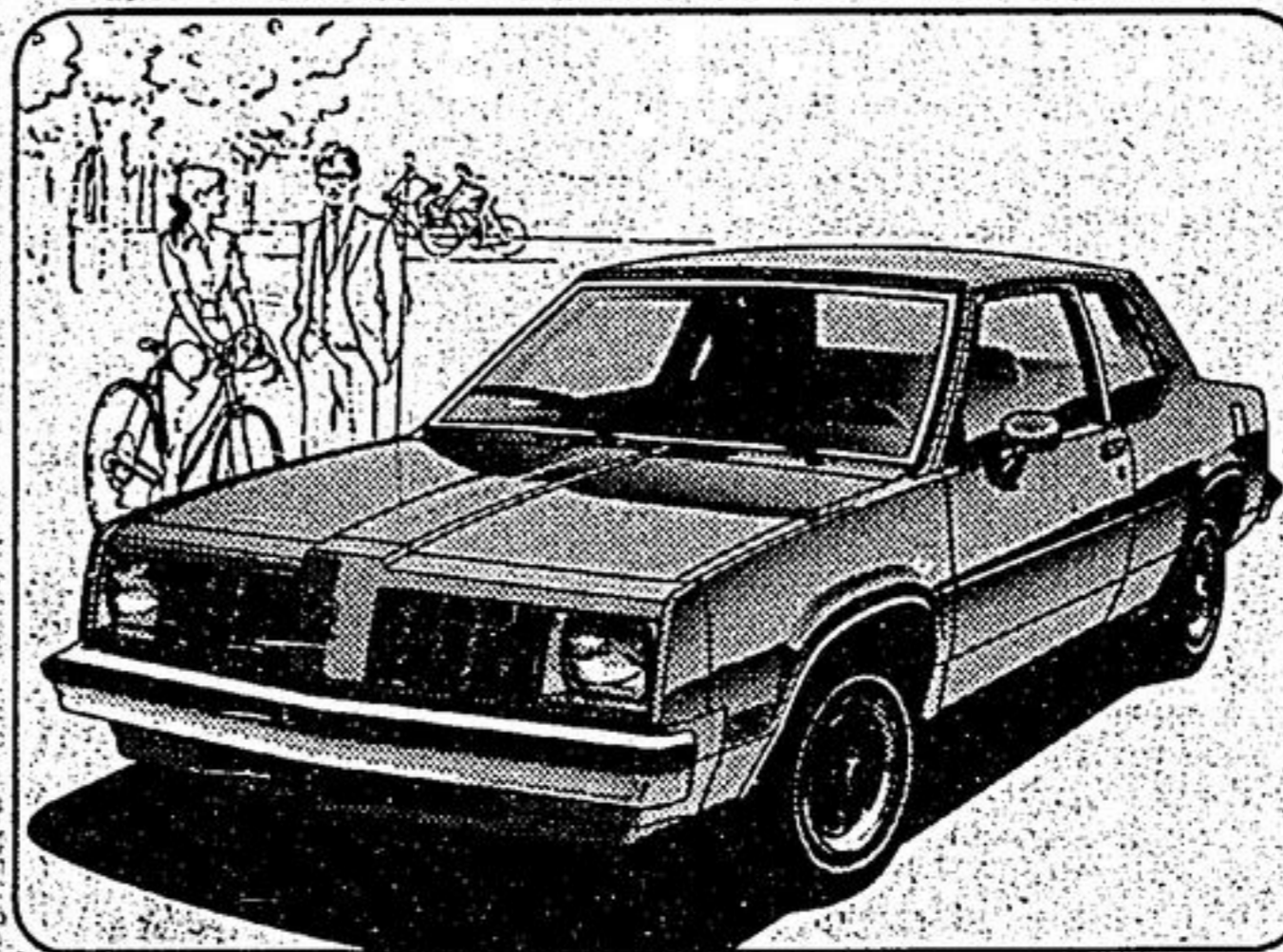


# If we didn't build them right in the first place, we couldn't make this offer:

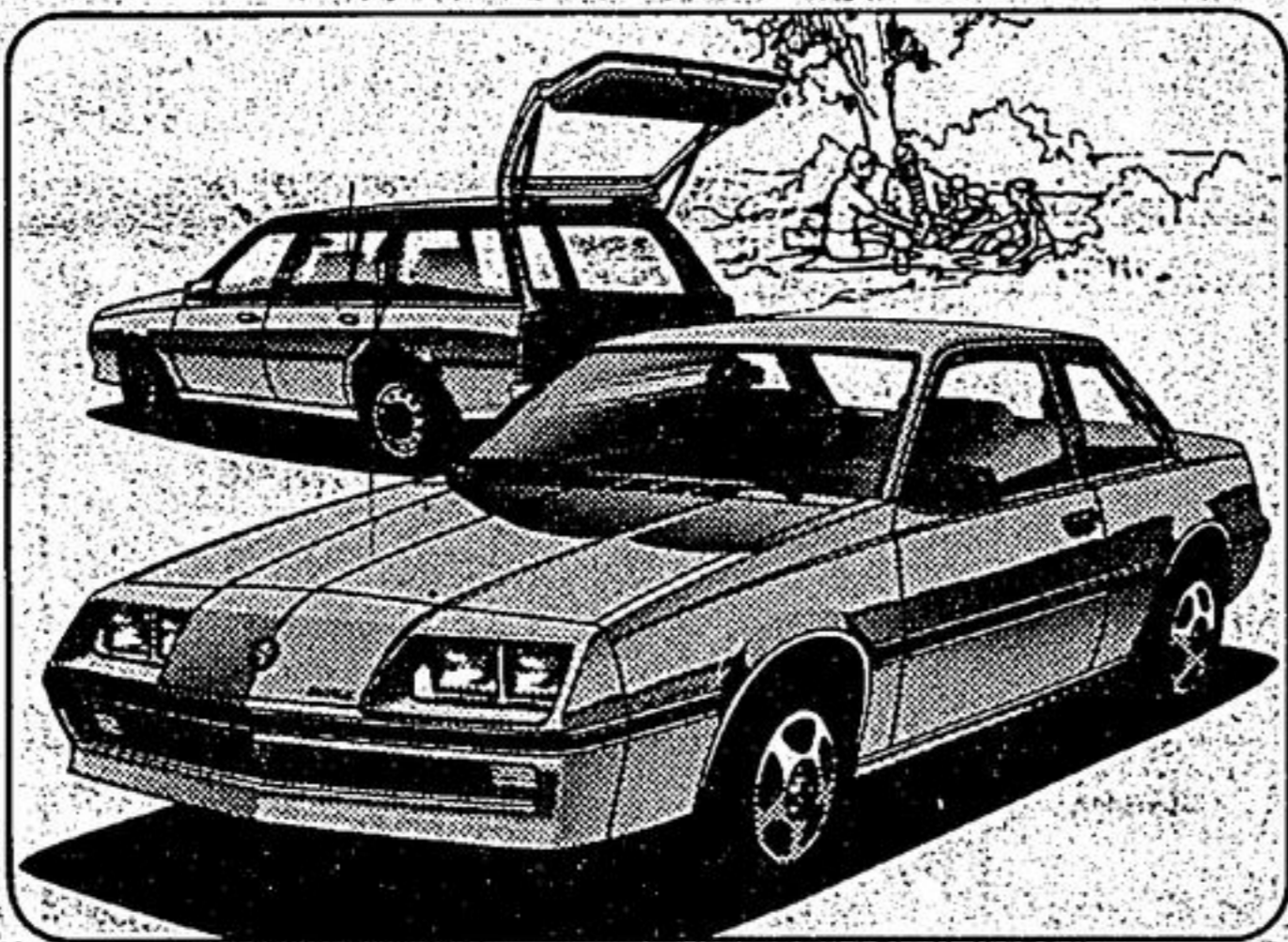
## Repair Protection at no extra cost for the next 3 years.



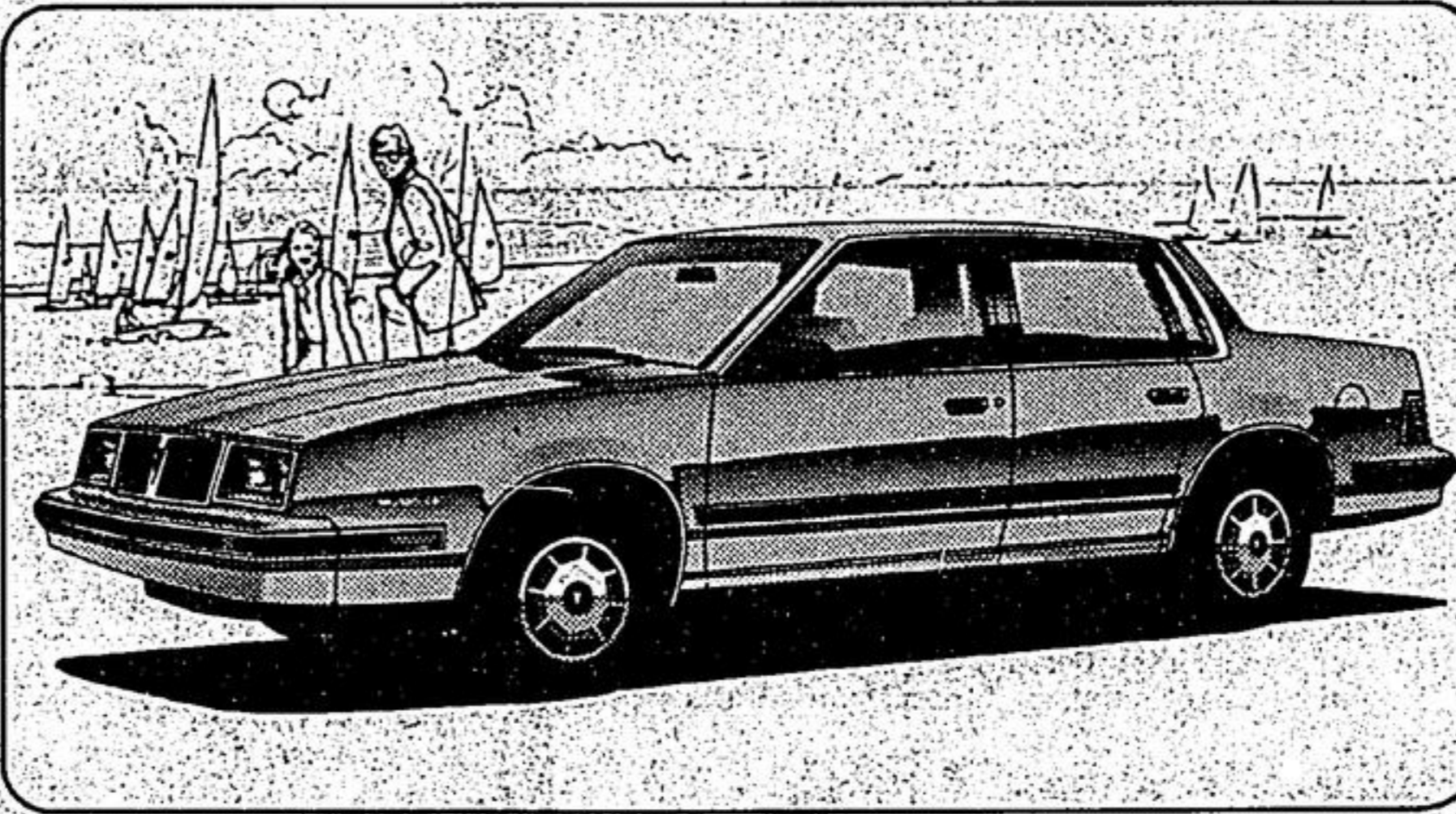
Chevrolet Celebrity 4-dr. Sedan



Oldsmobile Omega 2-dr. Coupe



Pontiac J2000 4-dr. Station Wagon, Buick Skyhawk Limited 2-dr. Coupe



Pontiac 6000 LE 4-dr. Sedan

Over 70 ways to go front-wheel-drive... mid-size, compact and subcompact cars only from General Motors.

### The right cars

Front wheel drive offers distinct advantages: in weight efficiency, which helps at the pumps; in traction in mud, snow, ice and rain; in handling when linked with MacPherson strut front suspension and rack-and-pinion steering; and in more generous passenger and cargo room when combined with a transverse (side mounted) engine.

They are all aerodynamically fine tuned, because reducing air resistance affects fuel economy. Aerodynamic designing also produces sleek, contemporary styling.

And these cars come from a world of automotive technology practically nonexistent a few years ago.

**Advanced technology.** It is a General Motors world where, increasingly, computer-controlled laser scanners measure body openings for precise fit.

Where gamma rays inspect otherwise-invisible parts.

A world where robots lend a helping and untiring hand.

It's a highly technological world, playing a growing part in how we design and build GM cars and how you drive and enjoy them.

They are meant to be enjoyed for a long time. We've made extensive use of corrosion-resistant materials like galvanized steel and aluminum, plus resilient coating to help prevent stone chipping.

Every model has its own unique appeal, but they all share certain other qualities in addition to front wheel drive. Including a standard

General Motors is so confident of the quality of their front-wheel-drive families of mid-size, compact and subcompact cars that, for a limited time, the GM Continuous Protection Plan option is being offered at no extra cost.

For three years or 60,000 kilometres (36,000 miles), you're protected against major electrical and mechanical repair costs, subject to a \$25.00 deductible fee except when covered by the GM New Vehicle

four-cylinder engine for optimum fuel efficiency. Our compacts also offer an optional V6 while most mid-size cars make available both gasoline and diesel V6s.

### At the right time

These cars are built to meet new demands for value and efficiency. Such as the built-in value that comes with a host of standard features. And the lasting value of high-quality manufacture.

The batteries are maintenance-free, should never need servicing. The clutch and brakes are self-adjusting. And the sealed wheel bearings are lubricated for life.

Oil and filter changes and chassis lubrication are recommended every 12 months or 10,000 kilometres (7,500 miles). While tune-ups, including spark plug and air filter replacements, are recommended every 48,000 kilometres (30,000 miles).

Besides the standard new car warranty, a warranty covers any defects in the powertrain for two years or 40,000 kilometres (24,000 miles) whichever occurs first. Also there's the no-extra-cost repair protection

option for three years that comes with these cars.

### With the right choice

General Motors is the only car company in the world offering so many ways to go front wheel drive, including over 70 mid-size, compact and subcompact models.

All-new mid-size cars. Chevrolet Celebrity, Pontiac 6000, Oldsmobile Cutlass Ciera and Buick Century introduce a new generation of mid-size automobiles. They offer five passengers a degree of comfort and luxury that make them logical family cars.

They are all available as aerodynamic 2-door coupes and 4-door sedans on a 2664 mm (104.9") wheelbase with standard 2.5 litre four-cylinder engine, automatic transmission, power steering and power brakes. All make available a gasoline V6 and Pontiac, Olds and Buick also offer a smooth, quiet diesel V6.

Mileage estimates with standard equipment are 36 MPG or 7.9 L/100 km, combined\*.

The compacts: Our front-wheel-drive compacts have been a success

### Limited Warranty

The Plan includes a car rental allowance if your car is tied up for repairs, plus an allowance for towing or road service. You're covered wherever you drive in North America at over 7,000 GM dealers.

It all adds up to extra value for your money. For full details, see your dealer for Chevrolet, Pontiac, Oldsmobile, Buick or Cadillac.

Offer expires July 30th, 1982 inclusive.

Chevy Cavalier and Pontiac J2000 offer 2-door coupes, 4-door sedans, 3-door hatchbacks and 4-door station wagons. New model additions, are even more attractively priced.

Fuel consumption with standard powertrain is rated at 40 MPG or 7.1 L/100 km, combined\*.

Oldsmobile Firenza and Buick Skyhawk are luxury small cars, our newest front wheelers. Olds offers 4-door sedans and 3-door hatchbacks; Buick, 2-door coupes and 4-door sedans.

Economy ratings with standard powertrain are 39 MPG or 7.2 L/100 km, combined\*.

Cadillac Cimarron 4-door sedan is a new kind of Cadillac for a new kind of Cadillac owner. Estimated fuel economy with standard equipment is 38 MPG or 7.4 L/100 km, combined\*.

### Right now.

Remember, the special no-charge repair protection offer applies only to those eligible vehicles purchased and delivered to the ultimate customer from May 11 through July 30th, 1982 inclusive. See your dealer for full details about the Plan. Today's car shopper can be a pretty tough customer and General Motors got the message. You get the goods. Buying or leasing, visit your dealer now for Chevrolet, Pontiac, Oldsmobile, Buick or Cadillac.

Some of the equipment shown or mentioned is available at extra cost.



# A world of change for your changing world.

\*Remember, these estimates are based on Transport Canada approved test methods. These fuel consumption/economy figures are estimates which may be subject to revision. The actual results you get will vary depending on the type of driving you do, your driving habits, your car's condition and optional equipment.