

**BONNAR CONSTRUCTION**  
**RENOVATIONS, ADDITIONS**  
**BASEMENT ALTERATIONS**  
**DECKING**  
**888-1515**

# Fine postal service

"The Stouffville post office is providing excellent delivery of The Tribune," says the paper's publisher Barry Wallace.

A story in last week's Tribune quoted readers who felt postal delivery of their Tribune was

poor. "Postal delivery of The Tribune is being affected by recent changes in the production of the newspaper," Mr. Wallace says.

"We're attempting to get most Tribunes into our readers' hands on

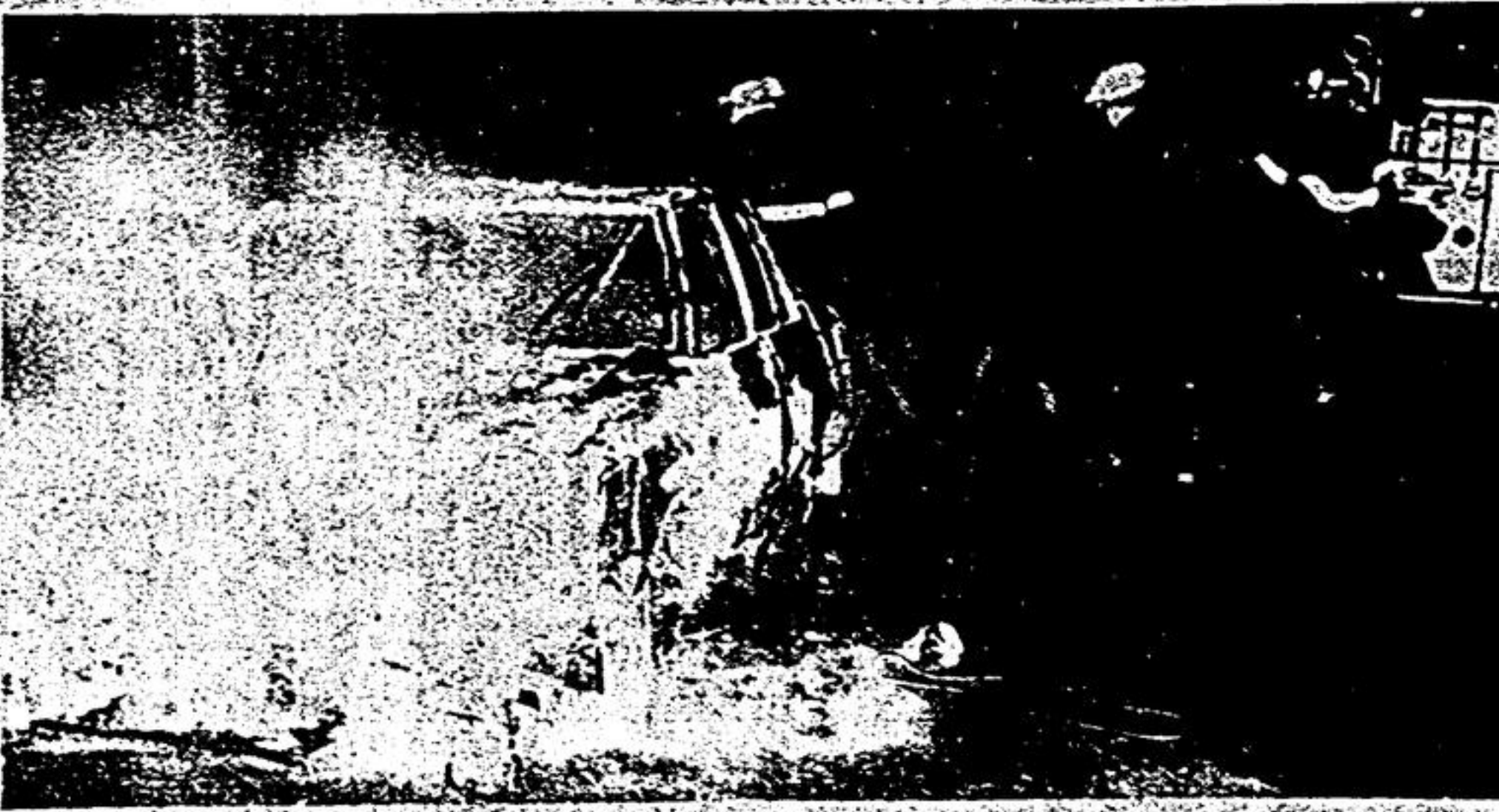
Wednesdays and the post office has been a big help."

Mr. Wallace feels a new printing schedule will allow Tribunes to reach the post office in time for distribution to post office box-holders Wednesday afternoon.

The new production deadlines, however, will not allow delivery

to subscribers on rural routes and suburban group boxes until Thursday morning.

"The onus is on The Tribune to meet its new deadlines," says publisher Wallace, "meanwhile, we're receiving tremendous co-operation from postmaster Fisher and his staff."



## BOX PLANTS CLEARANCE SALE

BUY 10 BOXES  
 FOR **\$750**  
 GET 3 BOXES  
 FREE

BUY 20 BOXES  
 GET 10 FREE

Quality Plants! Petunias, Marigolds, Phlox, Nicotine, Portulaca, Ageratum, Dusty Miller, Alyssum, Bonnie Best & Ball Early Tomatoes & Sweet Peppers.

640-2422

**RAMSEY FLORIST**

On Highway 48  
 5 miles N. of Hwy. 7  
 1/2 mile S. of Ringwood

## 'Enjoyable'

Dear Sir:

It was my pleasure to be in the audience May 29 for the Stouffville Players' production of "Leaving Home". It was gratifying to see a full house and welcome the return of little theatre to Stouffville.

I commend the choice

of play and hope to see the work of other Canadian writers in the future.

Thanks to the Players for an enjoyable evening's entertainment. Sincerely,  
 Kay Murray,  
 Stouffville.

## Isabel Burkholder

On Sat., June 5, Isabel Burkholder, wife of the late Frank Burkholder and daughter of the late Mr. and Mrs. Charles Sargent, passed away at Scarborough General Hospital. Surviving are two sons, Ralph and John; four grandchildren, Stephen, Linda, Susan and Brian and

one sister, Mrs. Joseph (Violet) Fry. For a number of years, Isabel was mother to John Alexander, son of the late Walter Burkholder. Service was held from the Dixon-Garland Funeral Chapel, Markham on Tues., June 8 with interment in Elmwood Cemetery.

## White hot

A 1981 Ford Granada, then suddenly, a blazing inferno. That's how owner Harold Sewell of Churchill Drive, Musselman's Lake described the speed with which flames spread through his vehicle, while westbound on the Glasgow Sideroad in Uxbridge Township. No one was injured but the car was a total loss.

—Jim Thomas

# Swimming Pool Chemicals

**Prices Slashed**

**TO SAVE YOU \$**

## STABILIZED CHLORINE

**Granular**  
**8 Kg** **\$54.99**  
 Reg. \$74.99

**Mini-Tabs**  
**8 Kg** **\$59.99**  
 (Ideal for automatic chlorinators)  
 Reg. \$86.99

**Dry Acid**  
**3 Kg** **\$3.95**  
 Reg. \$5.25

★ **Bulk Liquid Chlorine**  
 — Available —

★ **Sealed Air Solar Blankets**

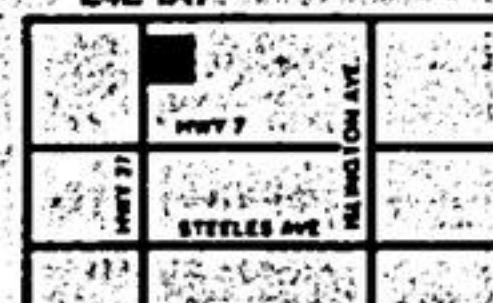
(available at East end store only!)

**SALE ENDS JUNE 25th**

**Yeall and Cullen**  
 Nursery Garden Centres  
 Mon. - Fri. 8-9 Sat. 8-6 Sun. 10-5

### WEST

#27 Hwy. (1/2 m. N. of #7)  
 Woodbridge, Ontario  
 L4L 1A7



851-2281/743-9177

### EAST

4290 Steeles Ave. East  
 Milliken, Ontario  
 L0H 1K0

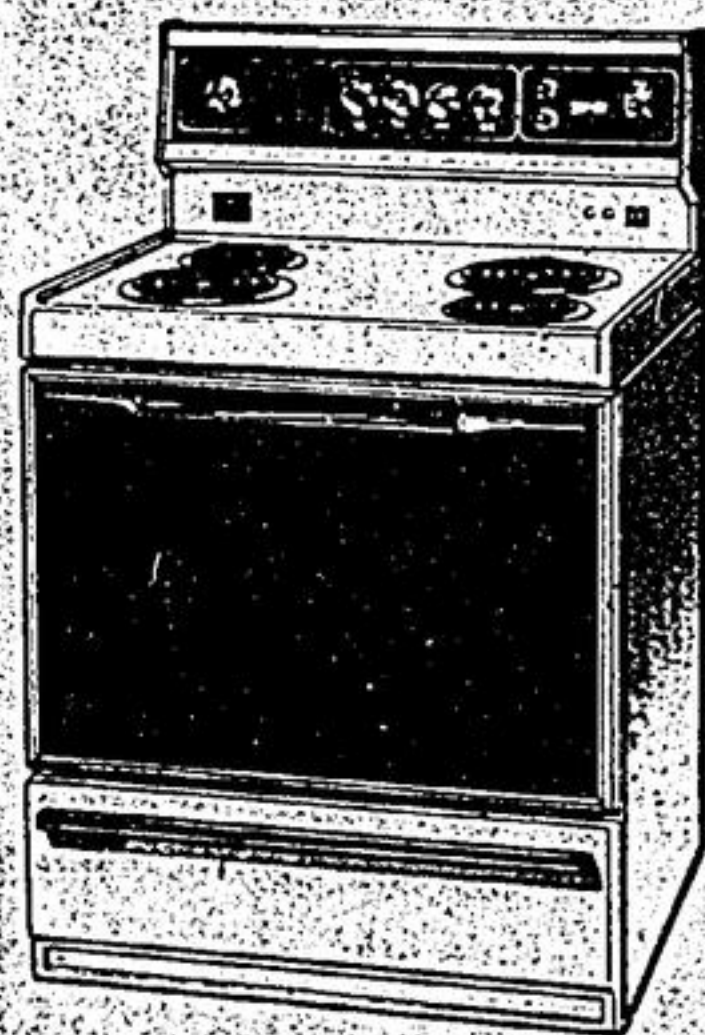


297-4477

# Leon's CANADA-WIDE PRICE BREAK

## Kelvinator 30" Range

Features an easy-to-clean porcelain broil pan and grill, illuminated back guard, regular appliance outlet, digital clock, infinite heat element switch, plug-out elements, oven and service pilot light, black glass oven window, and removable utensil drawer.



**\$559**

## Kelvinator



17 cu. ft. Refrigerator

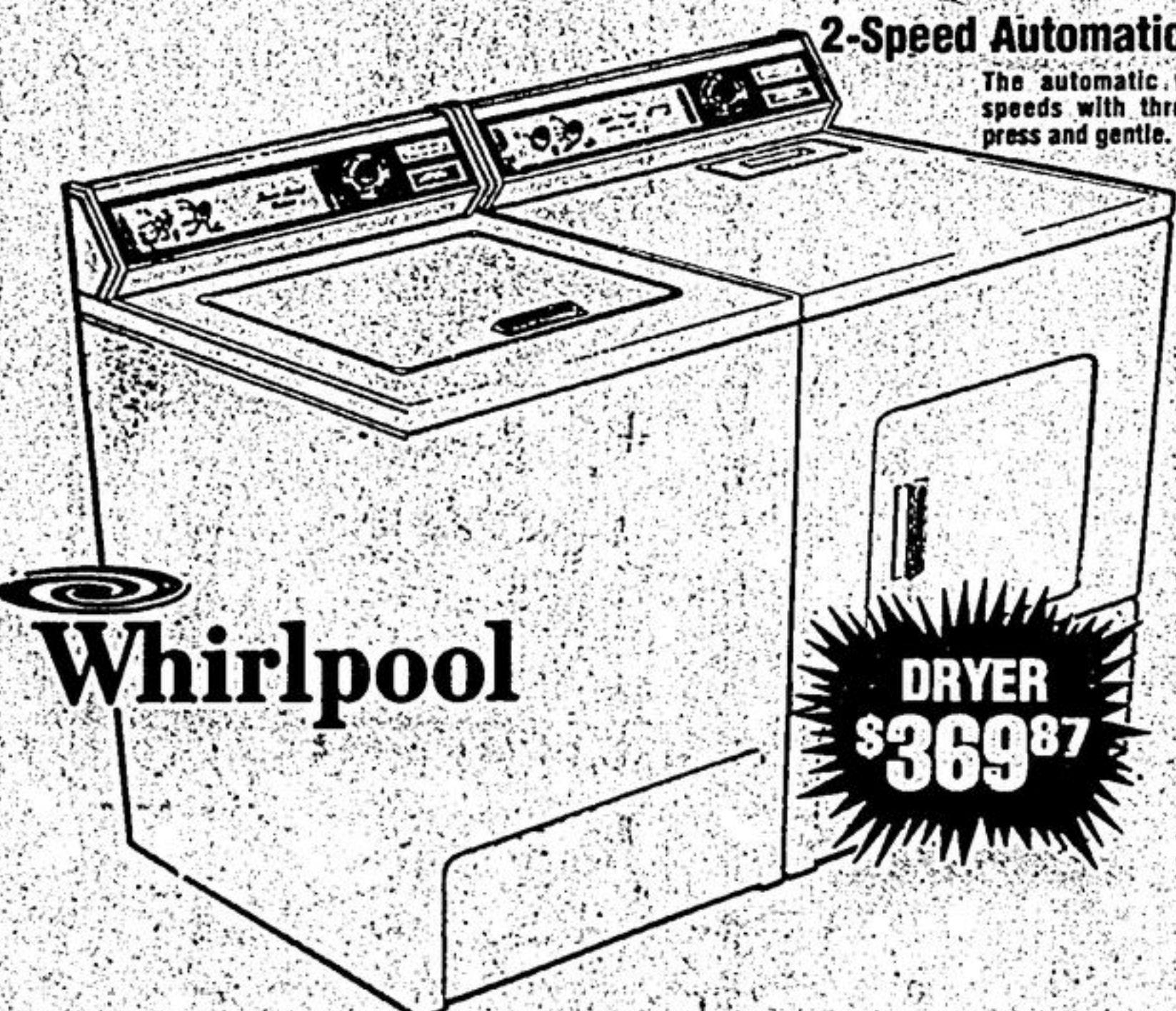
**\$748<sup>00</sup>**

Add up the value — 17 cubic feet capacity, plus one full and two half chrome multi-position shelves, meat keeper, smoke acrylic vegetable crispers, "injecto-flex" ice cube trays, ice bucket, egg bucket, and an energy saver and power miser switch.

## 2-Speed Automatic Washer and Dryer

The automatic washer features 2 wash/spin speeds with three cycles: normal, permanent press and gentle. Exclusive super surtigator agitator, variable water-level selector, 5 wash/rinse temperatures. The dryer brings you custom drying keyed for permanent press care. Three temperature selections. Includes Whirlpool's warranty plus free service and parts for a full year.

WHIRLPOOL INCLUDES A FREE IN-HOME DEMONSTRATION AND HOOK-UP WITH THE PURCHASE OF THIS AUTOMATIC WASHER.



**DRYER \$369<sup>87</sup>**

**WASHER \$579<sup>88</sup>**

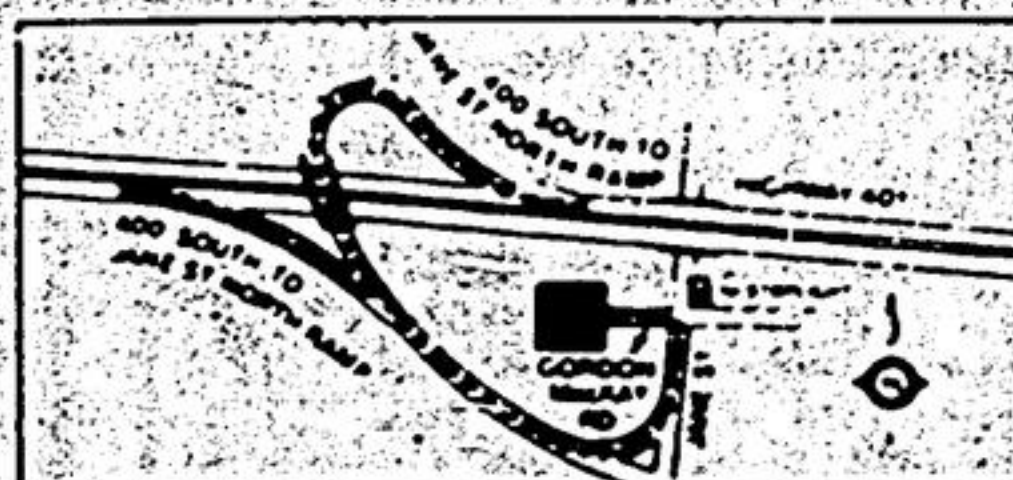
**ON-THE-SPOT PICK-UP .. DELIVERY EXTRA WITHIN 48-HOURS**

### TORONTO EAST

Markham Road  
 First stoplight  
 north of  
 Sheppard Ave.  
 Scarborough

### TORONTO WEST

401 to 400 cutoff to  
 Jane St. North  
 First stoplight turn west  
 on Gordon MacKay Rd.  
 Follow to Leon's.



**furniture—carpet—appliance warehouses and showrooms**