

## These pictures made news in '81



The year of 1981 presented opportunities for a variety of pictures, some depicting joy and others sorrow. One of the most tragic occurrences was a train-car crash at a level crossing on 18th Avenue, Markham, that took the life of Vicki Nash and her 18 month old son Rory, R.R. 1, Stouffville.



A group of Stouffville-to-Toronto commuters, determined to keep the train service operating, circulated a petition and collected several thousand signatures. Strong in support of this campaign were (left to right) - Fred White, John Pike, Doug Baird and Jack Kelterborn.



Wayne Feasby, Blake Street, Stouffville, was named "Citizen of the Year" and honored during the Town's Canada Week celebrations, July 1 to 5.



A delegation of Whitchurch-Stouffville residents, travelled to Queen's Park to protest the continued operation of a landfill site and the feared contamination of Town water.

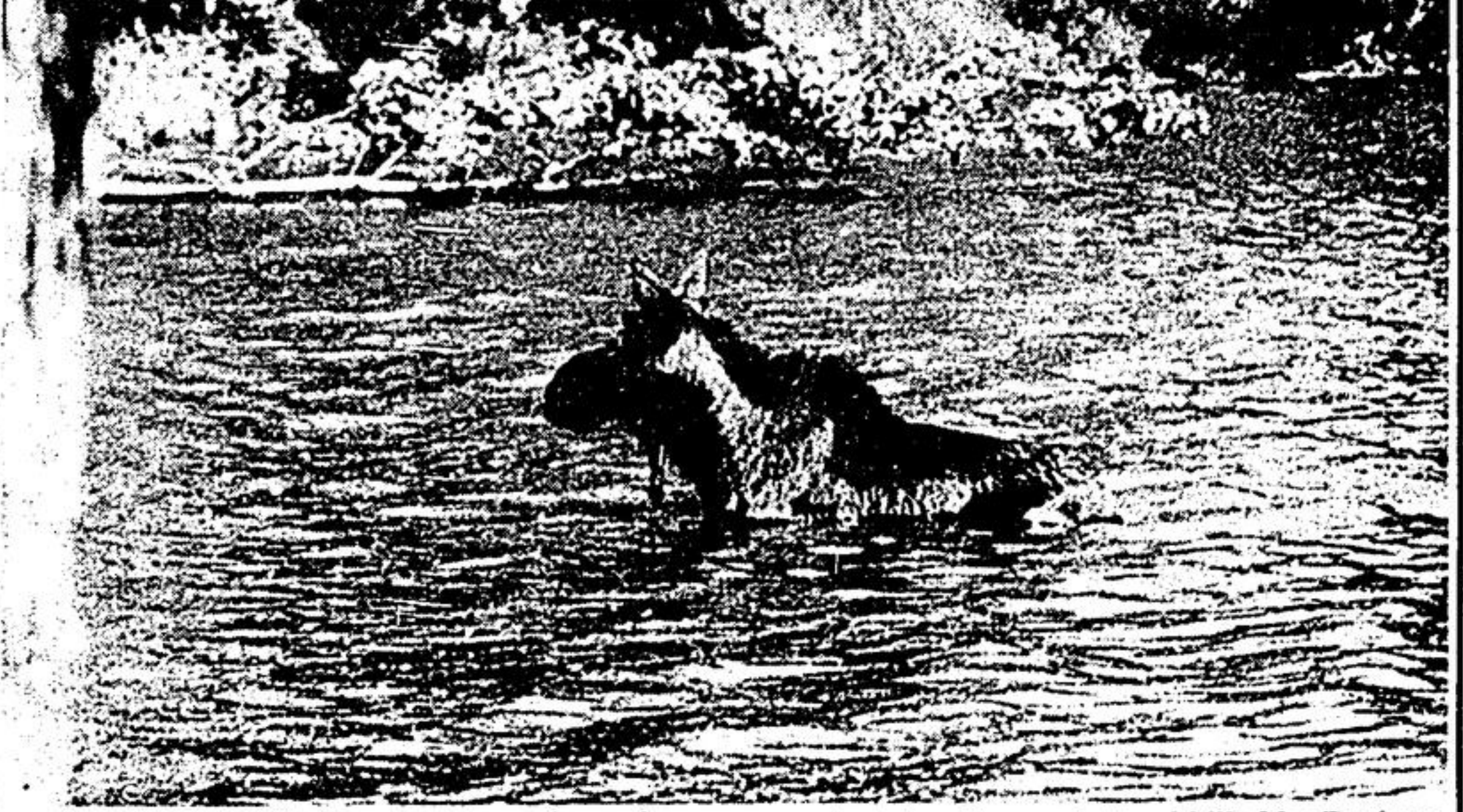


Barry and Marlene Nicholson of RR 1, Unionville, lost their home and contents in a \$100,000 fire, May 23. The century-old house was filled with priceless antiques.

Photos by  
**Jim Thomas**  
**Greg Coates**  
**Jim Holt**  
**Byran Armstrong**



C.H. NOLAN  
 Publisher retires



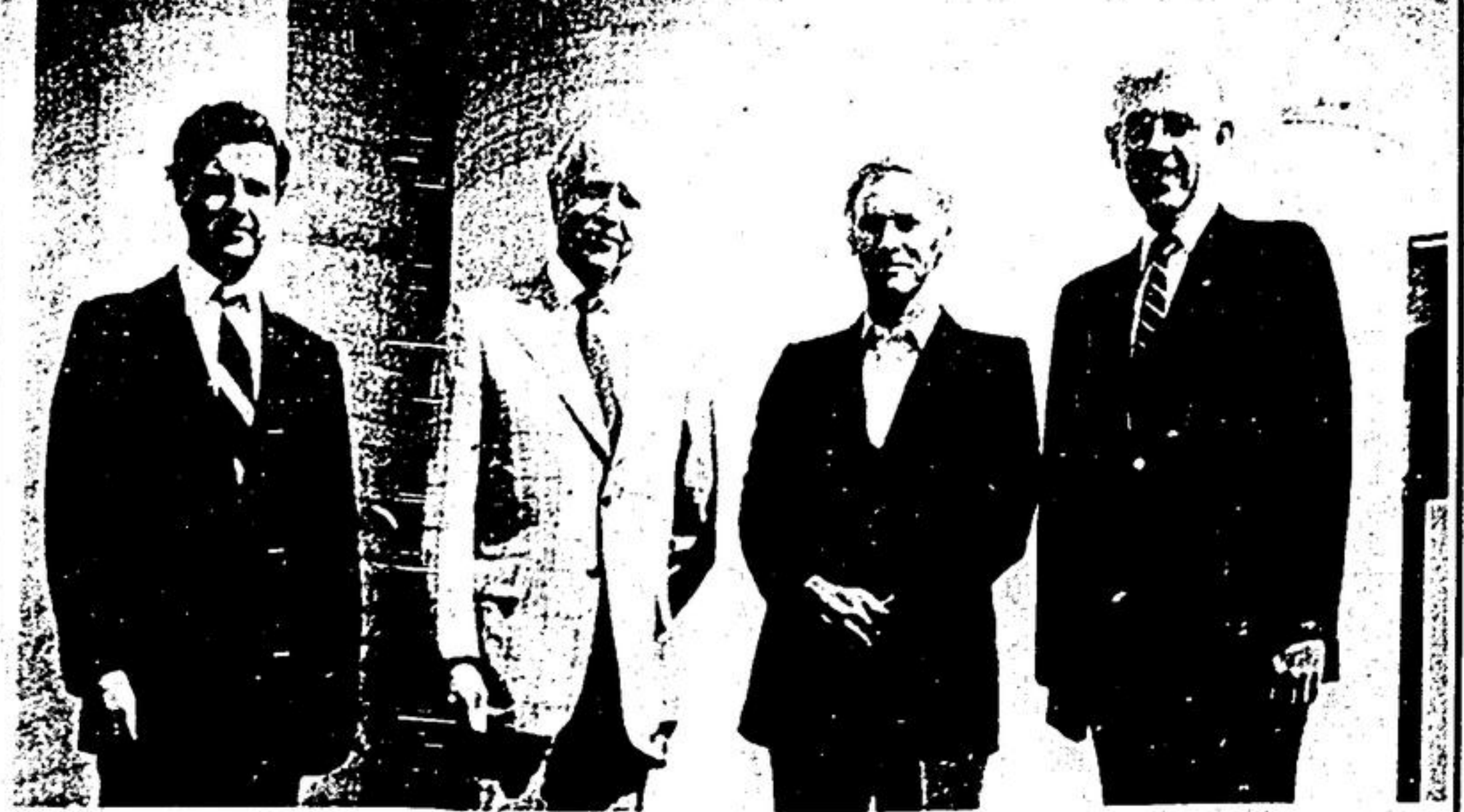
A 1,000 pound bull moose caused much excitement when it 'invaded' the resort centre of Musselman's Lake last September. Several weeks later, it was shot and killed by Durham Regional Police.



During Whitchurch-Stouffville's Canada Week celebrations, the Town hosted guests from Kirkland, Quebec. Mayor Eldred King (right) and Program Chairman Ged Stonehouse (left) were on hand to welcome Kirkland's pro-mayor Grace Shantz and asst. recreation director Neil Semanchuk.



KEITH ACTON  
 Stars in N.H.L.



St. Lawrence Starch Company Ltd., opened its multi-million dollar grain storage elevator near Lincolnville in Uxbridge Township. The 'open house' in September was attended by (left to right) - Ian Gray, vice-president of operations; John Gray, company president; Allan Lockie, branch manager and Hank Krech, executive vice-president.