



THE CORPORATION OF THE

# TOWN OF MARKHAM



## ONTARIO'S FASTEST GROWING COMMUNITY! OVER 2000 INDUSTRIES!

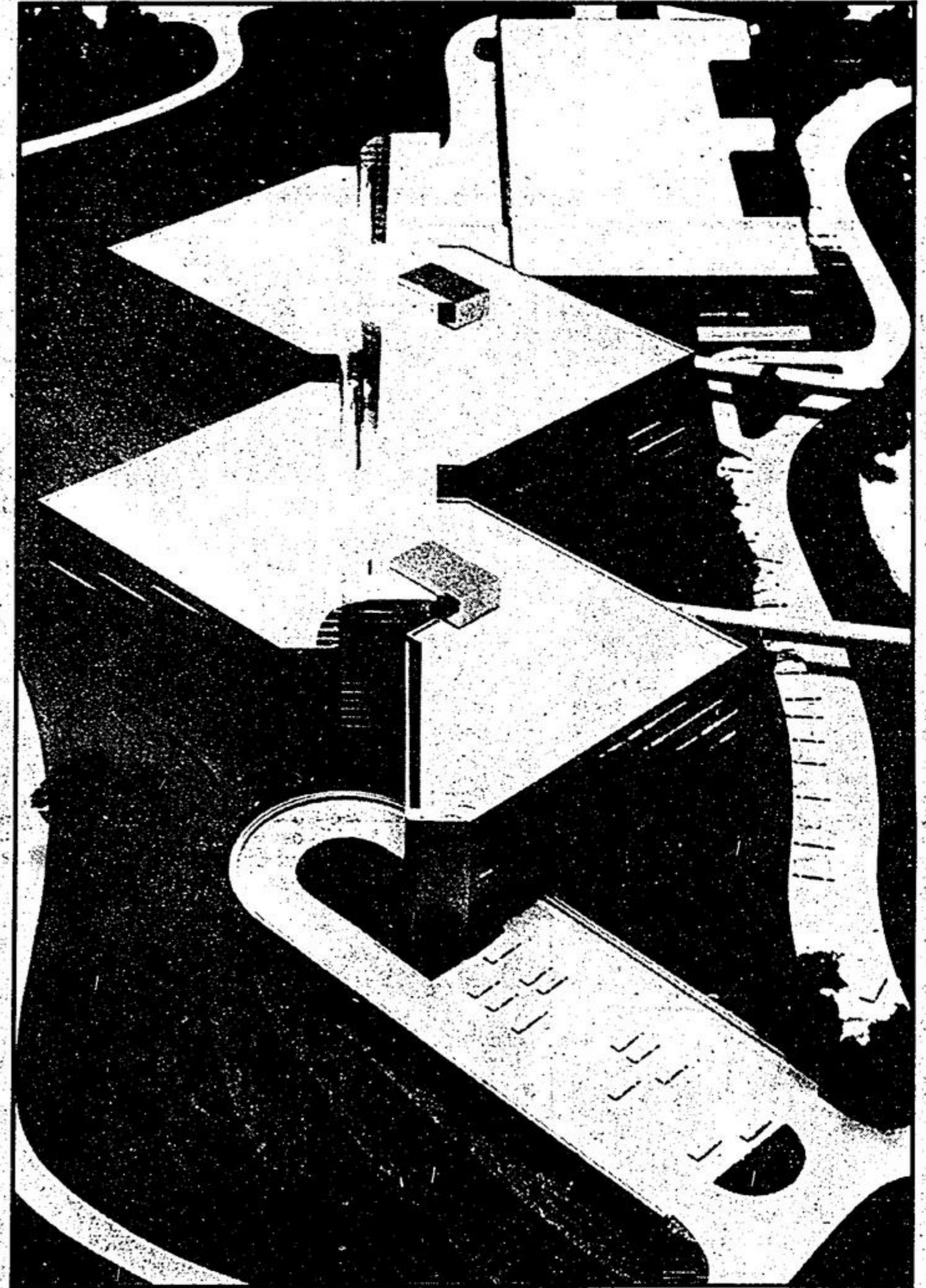
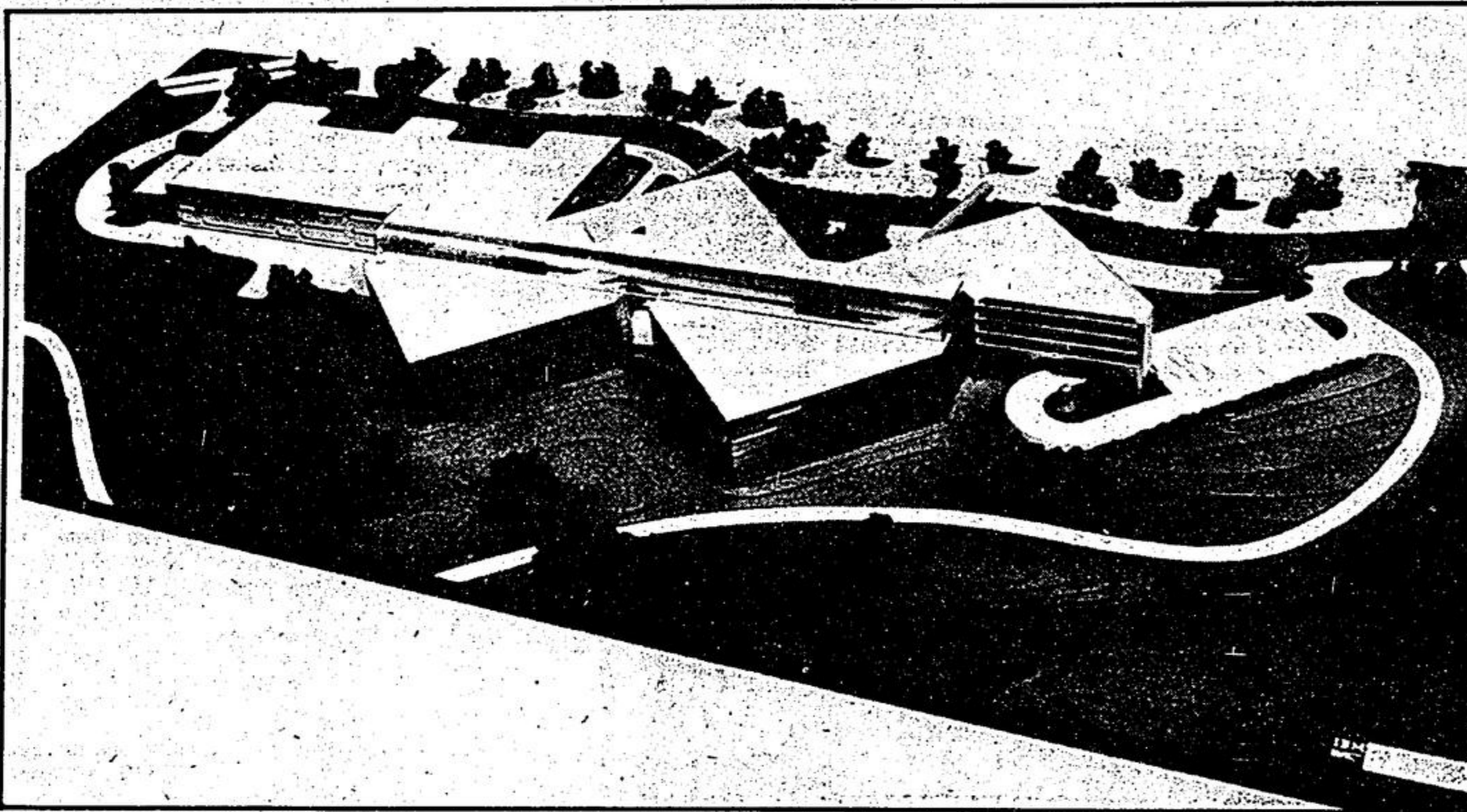


Anthony "Tony" Roman Mayor - Town of Markham    "Lorne" K. Lodge President I.B.M.    E. "Alex" Barton Treasurer & Industrial Commissioner Town of Markham

These Pictures taken on the occasion of IBM'S announcement to move to Markham.



IBM - ONE OF MARKHAM'S NEWEST INDUSTRIES - COINCIDENTALLY AND FITTINGLY DESIGNED SIMILAR TO MARKHAM'S LOGO.



This new facility will accommodate approximately 2,000 persons and will serve as I.B.M.'s Administrative Headquarters including Data Processing and Education Functions. The 700,000 square foot complex is designed for future expansion and is double the size of the former Headquarters in Don Mills.

Model of I.B.M.'s proposed new Markham Headquarters building located on the north side of Steeles Avenue between Victoria Park and Esna Park Drive. A 500 foot atrium connects the single rectangular and four triangular modules. Two elevated pedestrian walkways will connect the building with the parking lots.

