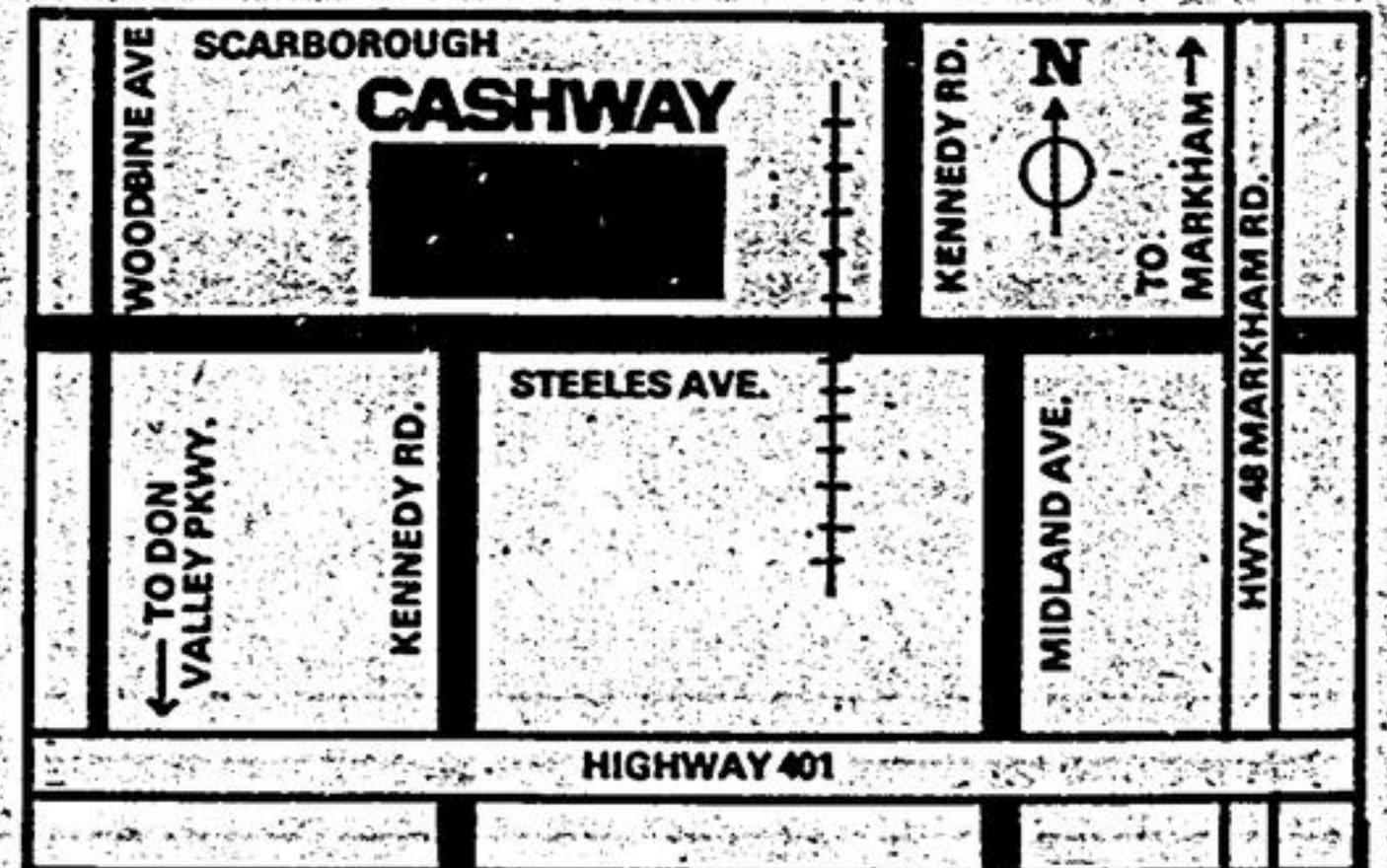


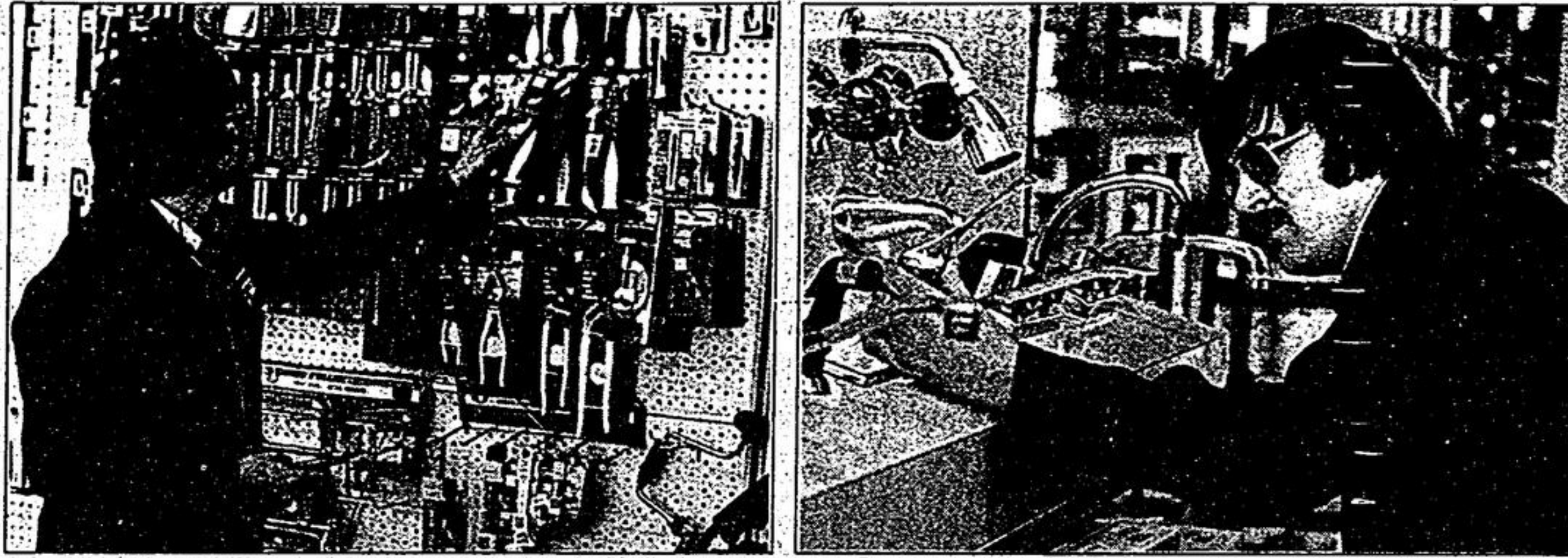
CASHWAY

YOUR DO-IT-FOR-LESS BUILDING CENTRES



RENOVATION CELEBRATION DAYS

APRIL 17, 18 and 19... **STEELES AVE. CENTRE ONLY!!**



4414 STEELES AVE. E. NEAR KENNEDY ROAD

**BRIGHTER AND BETTER..
A WHOLE NEW STORE TO SERVE YOU!**

Featuring Wider Aisles...More Merchandise Selections...
Everything Easy to Find...New Larger Order Desk...
Faster Service...And Quicker, Easier Check-Out!

**GET LUCKY!
VALUABLE
DOOR PRIZES!**
Come one...Come all. Door Prizes every day. Enter your name. You could be one of our winners!

DOOR PRIZES!

PRODUCT DEMONSTRATIONS!

SPECIAL VALUES!

UNADVERTISED VALUES!

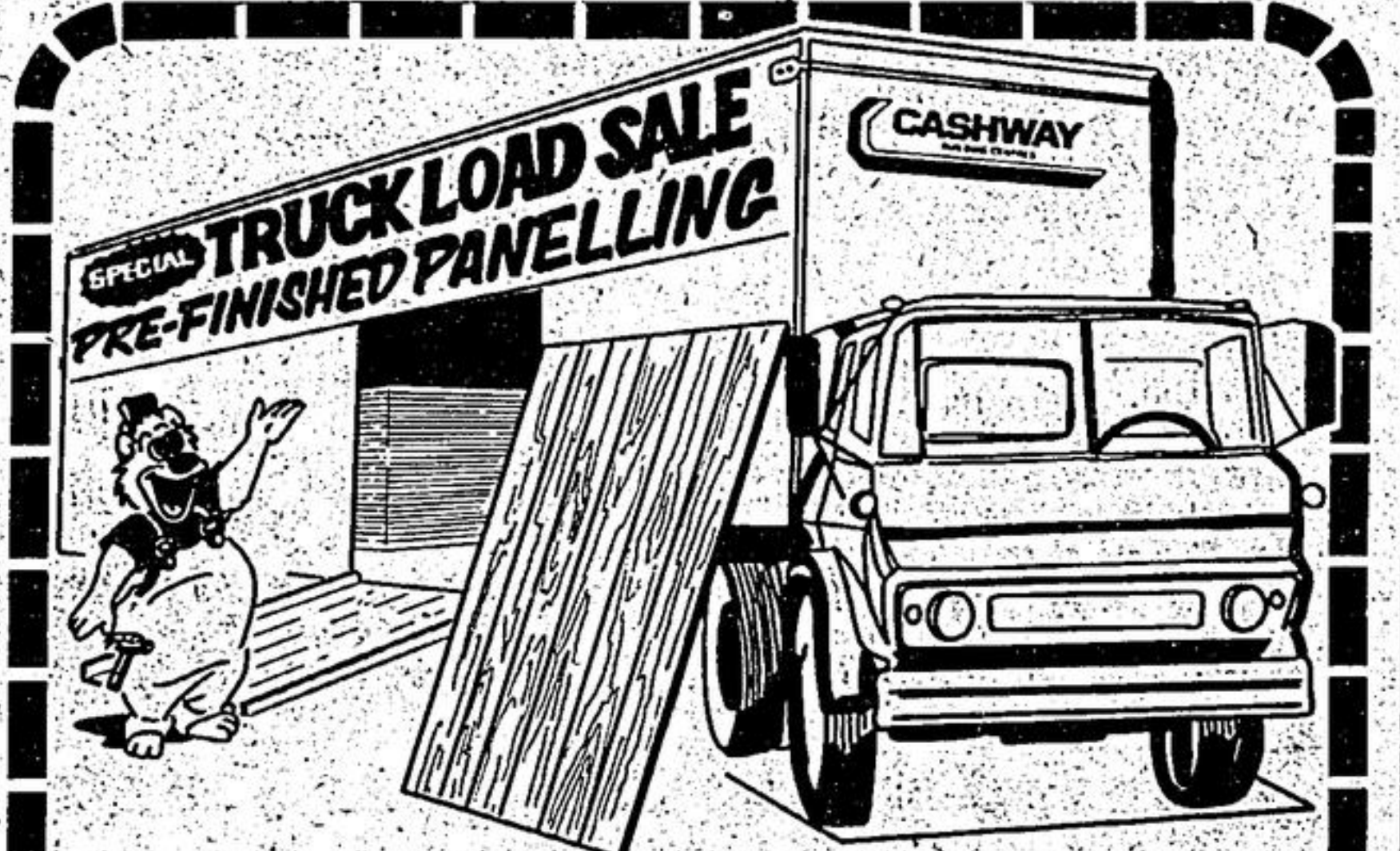
**INFORMATIVE
PRODUCT
DEMONSTRATIONS!**
"C.G.C."
"Z-BRICK"
"ROL-TEX"
STUCCO
"TREMCLAD"
"WATERLINE"
Ideal Hardware
"SUPER GUARD"
Safety Locks
"CELUKA"
SIDING SPECIAL!
Carton of 99 square feet only \$76.00, our regular \$88.00, during demonstrations.



**BRING THE KIDS!
FREE
BALLOONS AND
LOLLIPOPS**
All 3 days of our exciting Renovation Celebration!

**BRING YOUR FRIENDS!
FREE
COFFEE AND
DONUTS**
All 3 days...Have your coffee break on us!

DOORBUSTER VALUES!
3 DAYS ONLY AT THIS STORE ONLY...HURRY, HURRY! ITEMS NOTED AS "SPECIAL PURCHASE" OR OFFERED "WHILE THEY LAST" CANNOT BE SUPPLIED SHOULD STOCKS RUN OUT. BE AN EARLY BIRD SHOPPER AND BE SURE.



TRUCKLOAD SALE SPECIALS!

3 DAYS ONLY AT THIS STORE ONLY!

4' x 8' PANELS!
Both are first quality prefinished panels
"ICED ELM" OUR REG. \$7.48
OR
"OAK" OUR REG. \$6.25
\$4.98 PANEL

4' x 7' MENDEBOARD **\$3.58** SHEET
5mm. Thickness. Suitable as an economy panelling. Also other uses.

4' x 8' HICKORY PECAN **\$7.48** PANEL
For house or cottage. A handsome panelling. OUR REGULAR \$8.58

ALSO OTHER PANELLINGS - DON'T MISS OUT ON THE VALUES AVAILABLE DURING OUR SPECIAL RENOVATION CELEBRATION!!

**4' x 4' WHITE
CEILING PANELS** OUR REG. \$4.20 **\$2.97** PANEL
Scored into 12" x 12" Panels to simulate the look of ceiling tiles.

FOAM INSULATION **\$4.29** SHEET
4' x 8' x 1" SHEET OUR REG. \$5.27

LIGHT BULB DEAL
40, 60 OR 100 WATTI **4** Bulbs For **99¢**

Special purchase. Name brand inside frosted white. Available only in packages of two.

HANDY TRASH BAGS
26" x 36" SIZE PACKAGE OF 10 **66¢**

Special purchase! 1.25 Mil Green Bags with twist ties.

2x4-8's
Economy spruce or Jack Pine. 96" and/or P.E.T. 92-5/8" **88¢** EACH

SMOKE DETECTOR
9-VOLT BATTERY INCLUDED **\$9.97**

Save \$4.91! Our Reg. \$14.88! "Westclox" brand. Buy for home and the cottage. It could save your life!

ROSE BUSHES
2-year Nursery Grown Stock!
SUPER BUY **\$1.39** EACH
FEATURE!
Tea, Climber and Floribunda varieties, pink, white, red, etc. Buy what you need and get growing!
THIS IS A REAL SUPER BUY!

DIMMER SWITCH!
OUR REG. \$4.39 **\$3.67**

Push-on, push-off, deluxe model lets you dim lights from full bright right down to dark or anywhere in between!
CAULKING GUN
RATCHET TYPE!
OUR REG. \$2.29! **99¢** EACH
Limit 2 per customer. WHILE THEY LAST!

GARDEN VALUES!
1/2" HOSE **\$2.97** 50-FT. LENGTH!
Oscillating Sprinkler **\$4.97**
COVER UP TO 2000 SQ. FEET!

6-FT. PICNIC TABLE
SPRUCE! **\$18.88**
OUR REG. \$23.95
Includes package of pre-cut angled legs plus lumber for top and seats. Ready to assemble. Economy spruce.

"SKIL" POWER SAW
7 1/4" Limited Quantity! **\$29.88**
Model 1715, 115-V., 5200 RPM. Offered WHILE THEY LAST, so hurry!

5-SHELF STORAGE
SAVE \$5.00! OUR REG. \$24.50 **\$19.50**
"Spacemaker" unit. Approx 16" deep, 73" high, 36" wide when assembled. Gold colour.

METAL TOOL BOX
REG. \$7.95! Approx. 16" x 16" x 6 1/2" Single Tray **\$4.44**

10-6-4 FERTILIZER
40-LB. BAG "MIRACLE GREEN" LAWN & GARDEN **\$3.97** BAG

**Standard Spruce
METRIC SIZE
PLYWOODS**
1200mm.x2400mm.
Offered WHILE STOCKS LAST!

9.5MM. Thickness **\$6.66** SHEET
12.5MM. Thickness **\$8.88** SHEET
15.5MM. Thickness **\$11.99** SHEET

SHOP WITH CREDIT!



OPEN THURSDAY & FRIDAY UNTIL 9 P.M.
DELIVERY AVAILABLE AT REASONABLE RATES

**PLANNING TO BUILD? LET US ESTIMATE THE COST OF MATERIALS YOU'LL NEED...FREE AT NO OBLIGATION TO YOU!!
LUMBER AND BUILDING SUPPLY PRICES ARE FLUCTUATING.. BRING IN YOUR QUOTE FOR OUR CURRENT PRICES.**