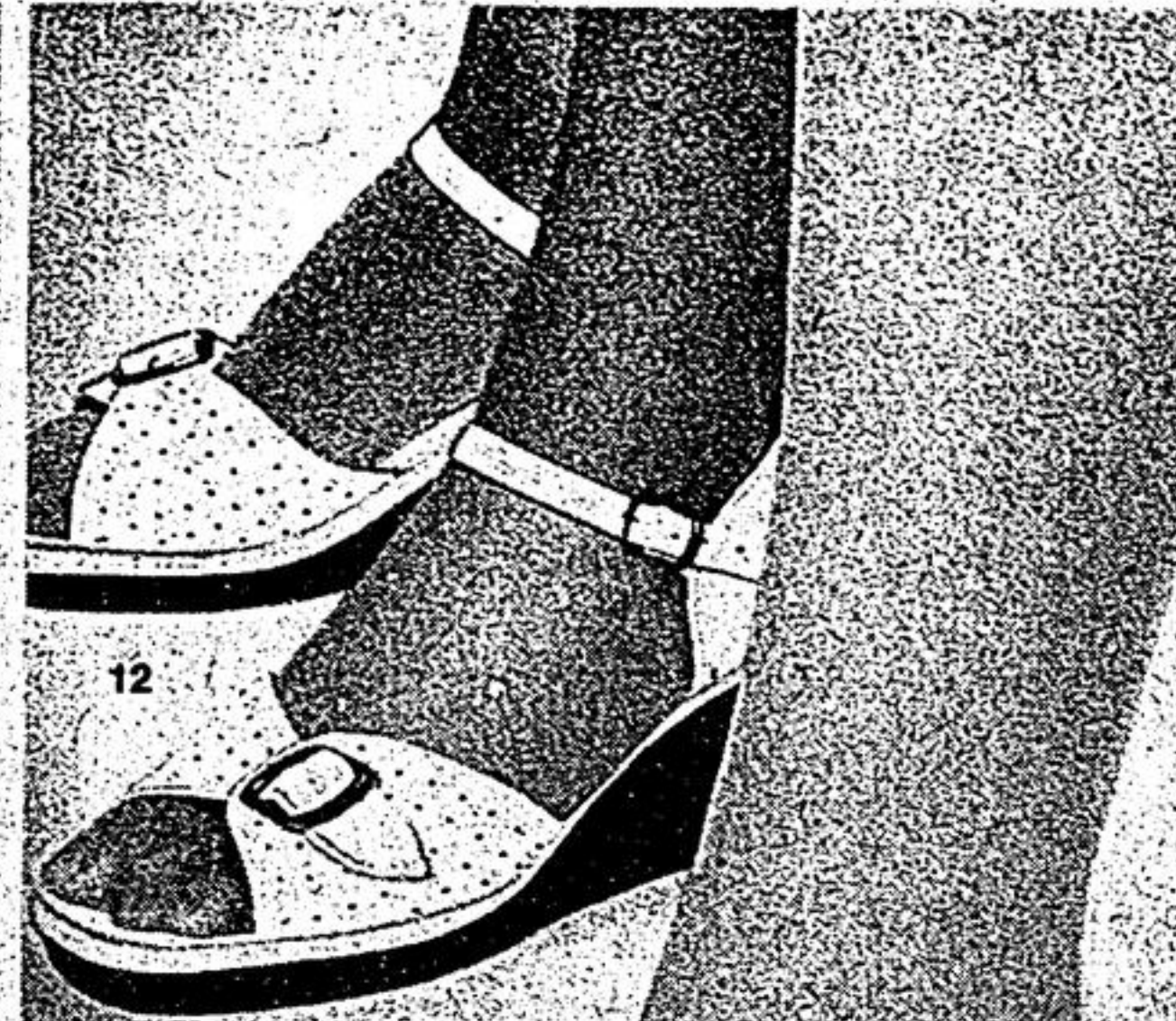
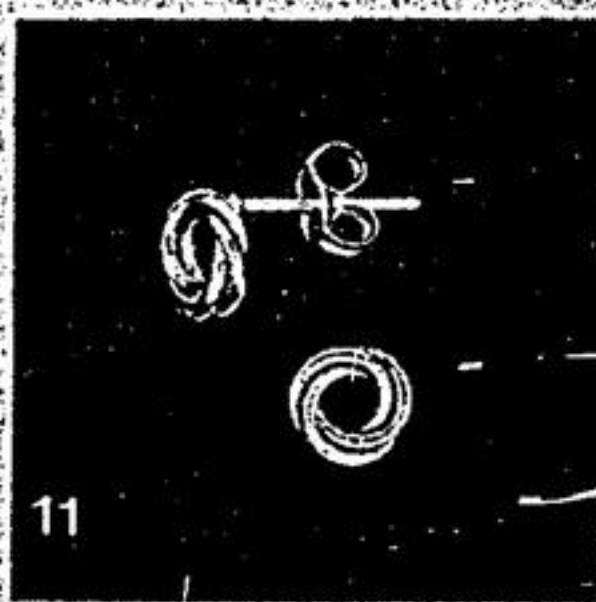
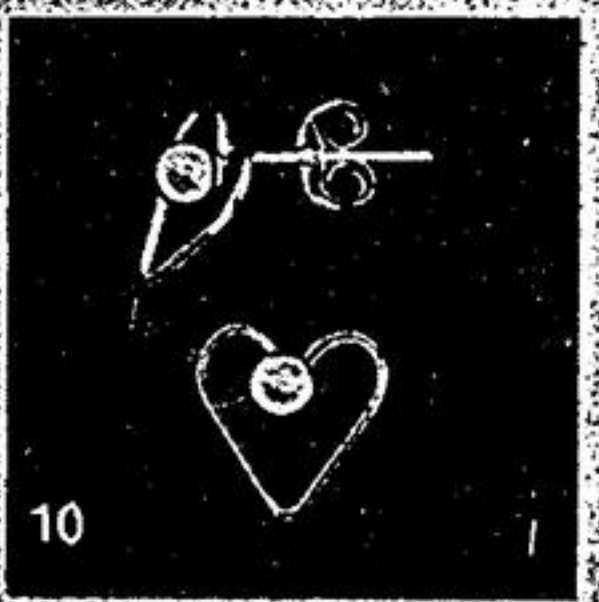
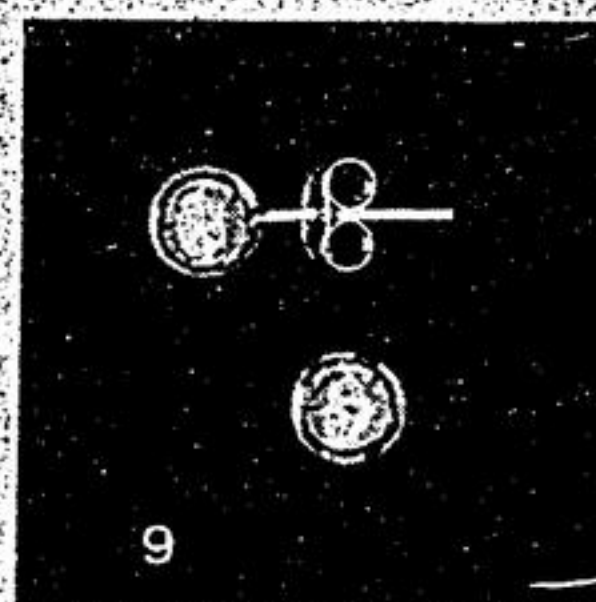
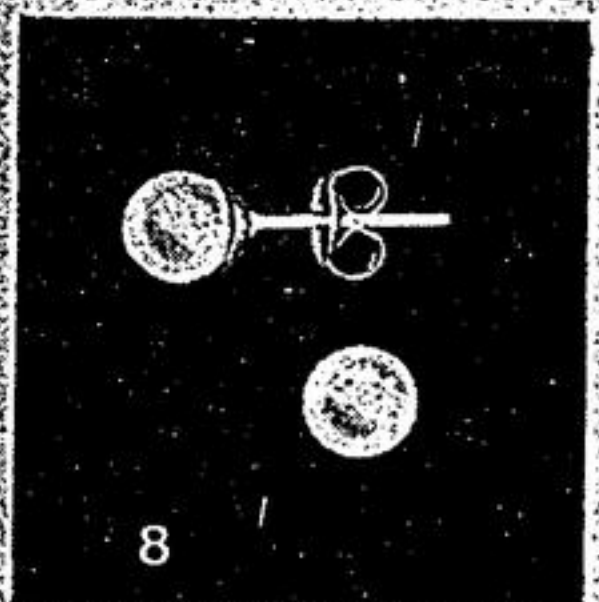
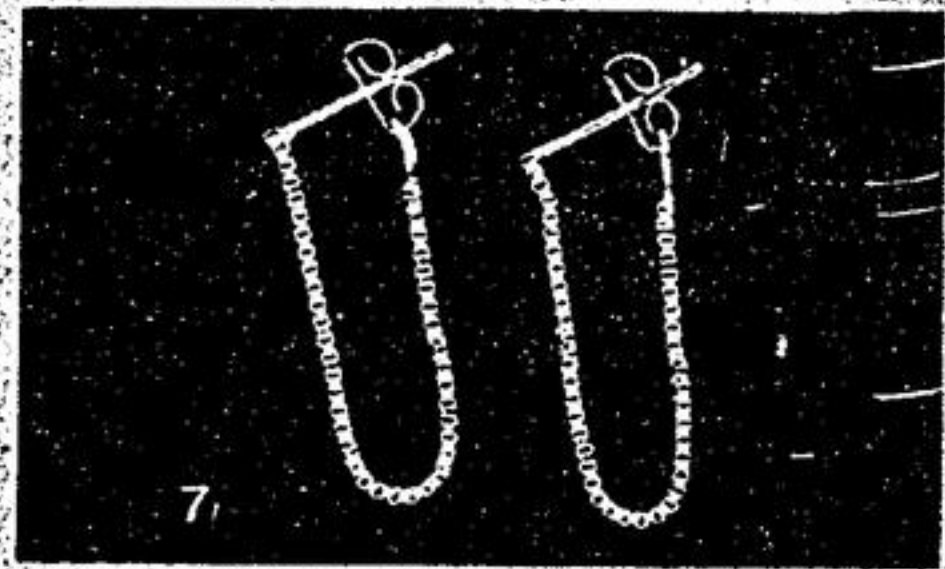
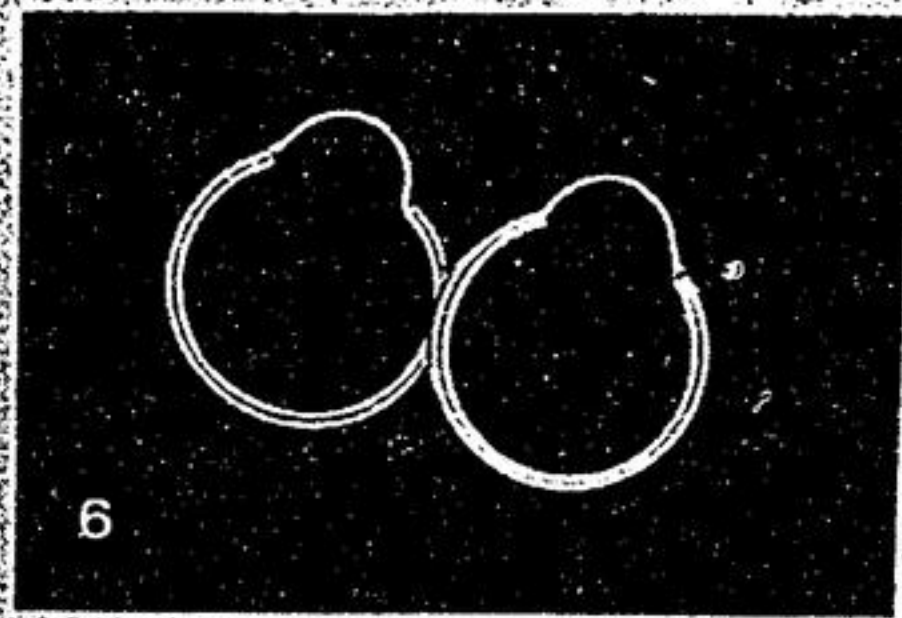
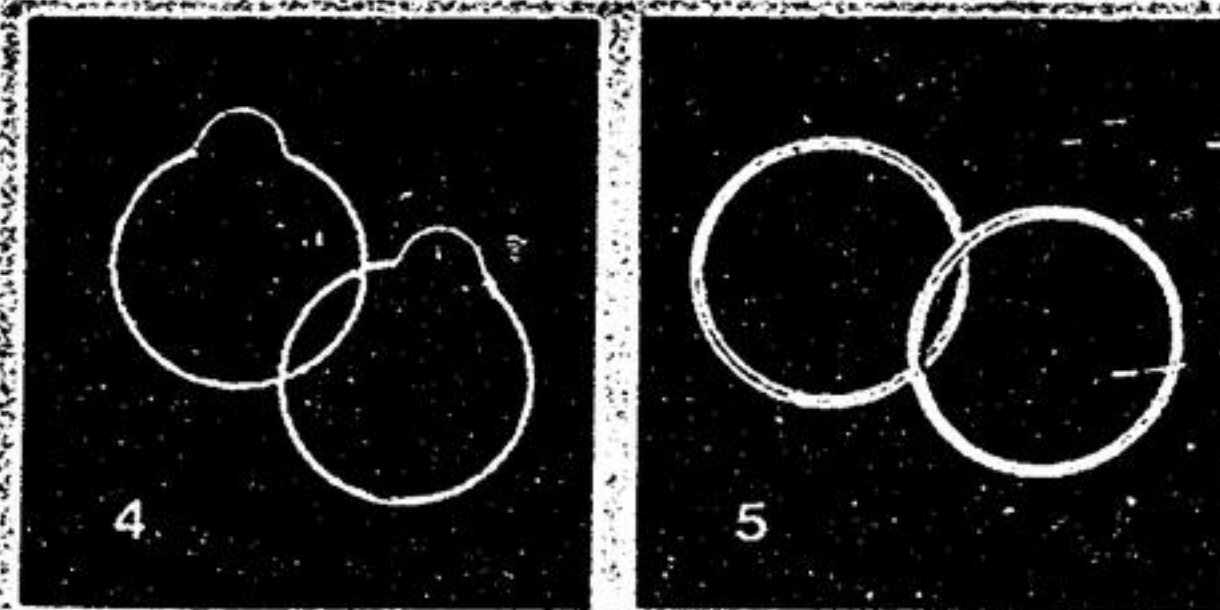


EATON'S TRANS CANADA

A double bill of action buys to



New summer knits! Super low prices!

Here's the pick of the crop in a lacy seed-stitch . . . phone — and collect yours!

Tops.
Eaton price, each

19⁹⁹

Skirt.
Eaton price, each

24⁹⁹

Cool, classic, and very collectible — in a textured blend of acrylic-and-nylon. Pull-on skirt goes with either top. Sizes S., M., L.
(1) 351 — Cap-sleeved top with V neckline. In off-white or medium blue.
(2) 351 — Short-sleeved top with keyhole neckline. In off-white or yellow.
(3) 351 — Pull-on skirt, fully lined, with elasticized waistband. In off-white, yellow, or medium blue.

(DEPT. 248)

50% off! 14K gold earrings for pierced ears . . .

Get here early. There's more in store — a really superb collection! All in gleaming 14K gold. Get some! And remember, Mother's Day is only weeks away. Earrings shown larger than actual size.

Description	Eaton reg.	Pair
(4) 116 — Large hoop U-wire	50.00	25.00
(5) 116 — Popular "sleeper"	35.00	17.50
(6) 116 — Med. hoop U-wire	45.00	22.50
(7) 116 — Box chain wrap	60.00	30.00
(8) 116 — Pearl stud	50.00	25.00
(9) 116 — Gold ball	50.00	25.00
(10) 116 — Heart with pearl	70.00	35.00
(11) 116 — Lover's knot	60.00	30.00

(DEPT. 215)

Wedge-wise at Eaton's.

Eaton price, pair

9⁹⁹

Phone for yours.

With a supersoft insole — light, strappy, snappy — in classic summer colours — The wedge sets the pace in light, cushioned urethane. All three styles with buckled halter-style ankle straps. Full sizes only 5 to 10:
(12) 808 — Perforated adjustable buckled vamp. In tan or bone.
(13) 808 — Wrapped vamp, with raindrop cutouts. In bone, tan, or navy.
(14) 808 — Strappy T-strap. In white or tan.

If you order by phone please give us a second colour and style choice.

(DEPT. 738)

Save 39% on

Eaton's own Lady Fair Sayelle knitting worsted yarn! In 29 colours!

Eaton reg. 1.08

10 balls 6⁴⁹

(17K) 172 — Super for knitting, crocheting or weaving. This soft, warm, medium-weight acrylic yarn machine wash-and-dries. Approx. 50 g ball. Moth-proof too. And a buy like this is just too good to miss! Order on your Eaton's account for now and future projects.
White, pink, sky, copen, navy, oatmeal, apricot, bluegrass, bright pink, burgundy, dark pink, silver-grey, aran, camel, walnut, brown, vanilla, lt. green, lt. yellow, gala gold, deep orange, autumn flame, dark rust, moss green, ripe olive, variegated shades of peaches-and-cream, pastels (pink/blue/white), lullaby (green/yellow/pink/white), soft oranges. Not all colours available in all stores.

(DEPT. 224)

Save 25% on Lady Fair Baby Sayelle!
It machine washes-and-dries!

Eaton reg. 1.44

5 balls 5³⁹

(17N) 172 — Soft acrylic — It's non-allergenic. Approx. 50 g ball. Pink, white, sky, yellow, green, pastels (white/pink/blue), lullaby (pink/white/green/yellow). Or in acrylic-and-rayon twist in crystal white or crystal yellow. Not all colours available in all stores.

(Dept. 224)

Phone 881-5111. EATON'S Toronto, Eaton Centre (main floor)-215; (2nd floor)-248; (3rd floor)-224; (2 below)-738; Yorkdale, Scarborough, Sherway, Don Mills, Shoppers' World, Bramalea, Oshawa, Rockwood, Rexdale, Dufferin, Yonge-Eglinton, Victoria Park, Gerrard Square.

EATON'S

Store Hours: Eaton's — Toronto Eaton Centre, Mon. to Fri. 10 a.m. to 9 p.m.; Sat. 9:30 a.m. to 6 p.m. Yorkdale, Sherway, Rockwood, Rexdale, Warehouse Store, Bramalea, Don Mills, Scarborough, Pickering, Sheridan, Oshawa, Mon. to Fri. 9:30 a.m. to 9:30 p.m.; Sat. 9:30 a.m. to 6 p.m. Dufferin, Mon. to Sat. 10 a.m. to 10 p.m. Yonge-Eglinton, Mon. to Fri. 9:30 a.m. to 9 p.m.; Sat. 9:30 a.m. to 6 p.m. Shoppers' World, Mon. to Fri. 10 a.m. to 9:30 p.m.; Sat. 10 a.m. to 6 p.m. Gerrard Square, Mon. to Sat. 9:30 a.m. to 9:30 p.m. Victoria Park, Mon. to Sat. 9:30 a.m. to 10 p.m.