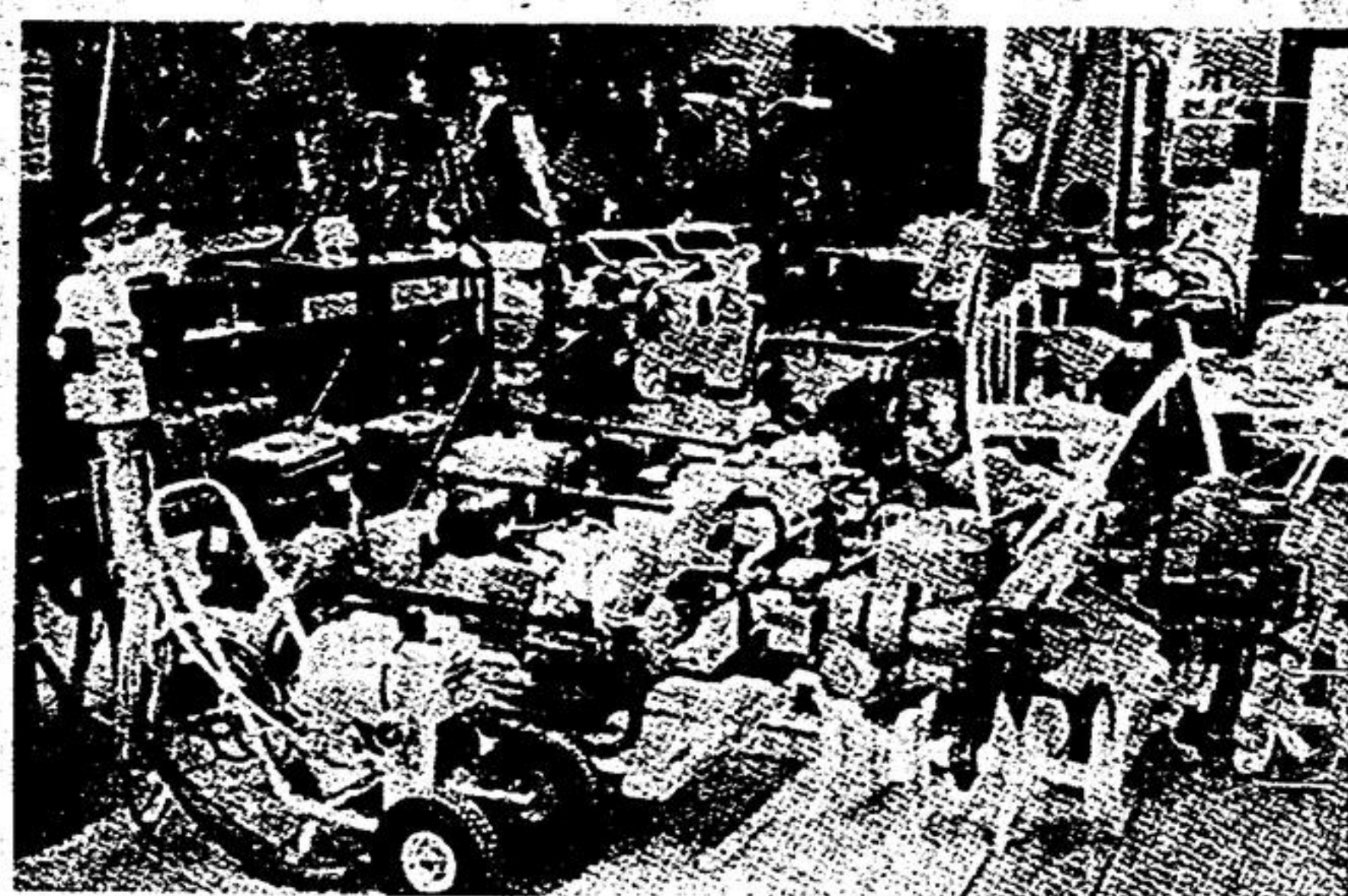


Stouffville Rental

HWY. 48 AT STOUFFVILLE

640-4686



TOOLS FOR: DO-IT-YOURSELFERS
- INSIDE OR OUTSIDE YOUR HOME

ALL HOME IMPROVEMENTS
LAWN & GARDEN TOOLS

INSULATING? RENT A BLOWER.

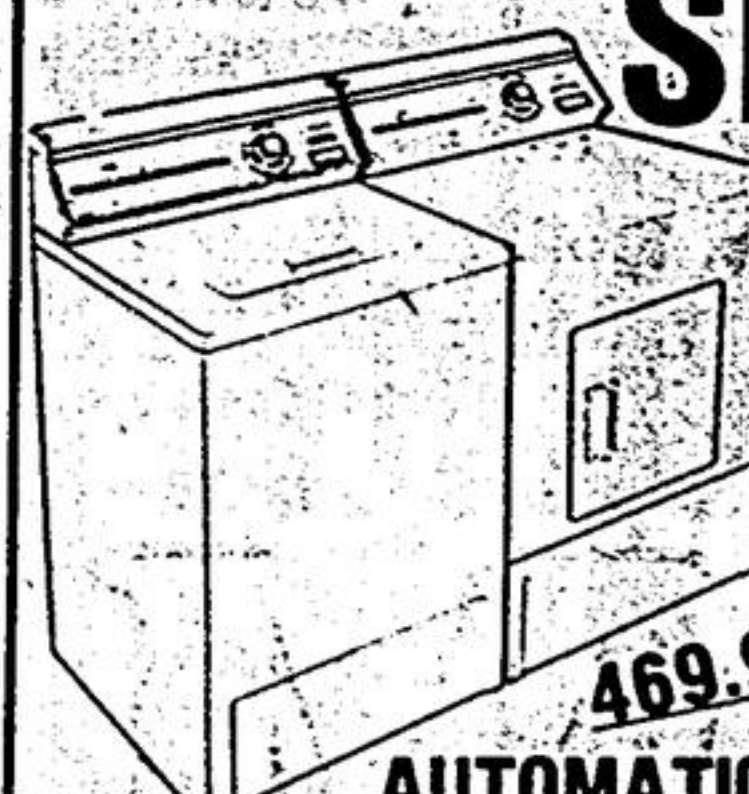
Inglis

ATOUCH OF TOMORROW

12th Anniversary SALE

IT'S OUR 12TH ANNIVERSARY and WE'RE CELEBRATING IT WITH THESE

SPECIALS:



294.99

AUTOMATIC DRYER

- 5 TEMPERATURE
- AUTOMATIC TIMER THAT SENSES AUTOMATICALLY AS THE CLOTHES DRY
- 3 DRYING CYCLES
- BOOT RACK
- UP TOP LINT FILTER
- SAFETY SWITCH
- WARNING END OF CYCLE BELL
- HEAVY DUTY

AUTOMATIC WASHER

469.99

- 6 CYCLE
- AUTOMATIC WASH RINSE TEMPERATURE SELECTION
- AUTOMATIC LINT FILTER
- WARNING COMPLETION BELL
- VARIABLE LOAD LEVELS
- HEAVY DUTY
- AUTOMATIC FABRIC SOFTENER DISPENSER
- BLEACH DISPENSER
- SELF LEVELING

SUPERB PLUS

NO PAYMENTS TILL APRIL 1

BRING THIS AD & SAVE AN ADDITIONAL \$15.00 OFF ANY APPLIANCE

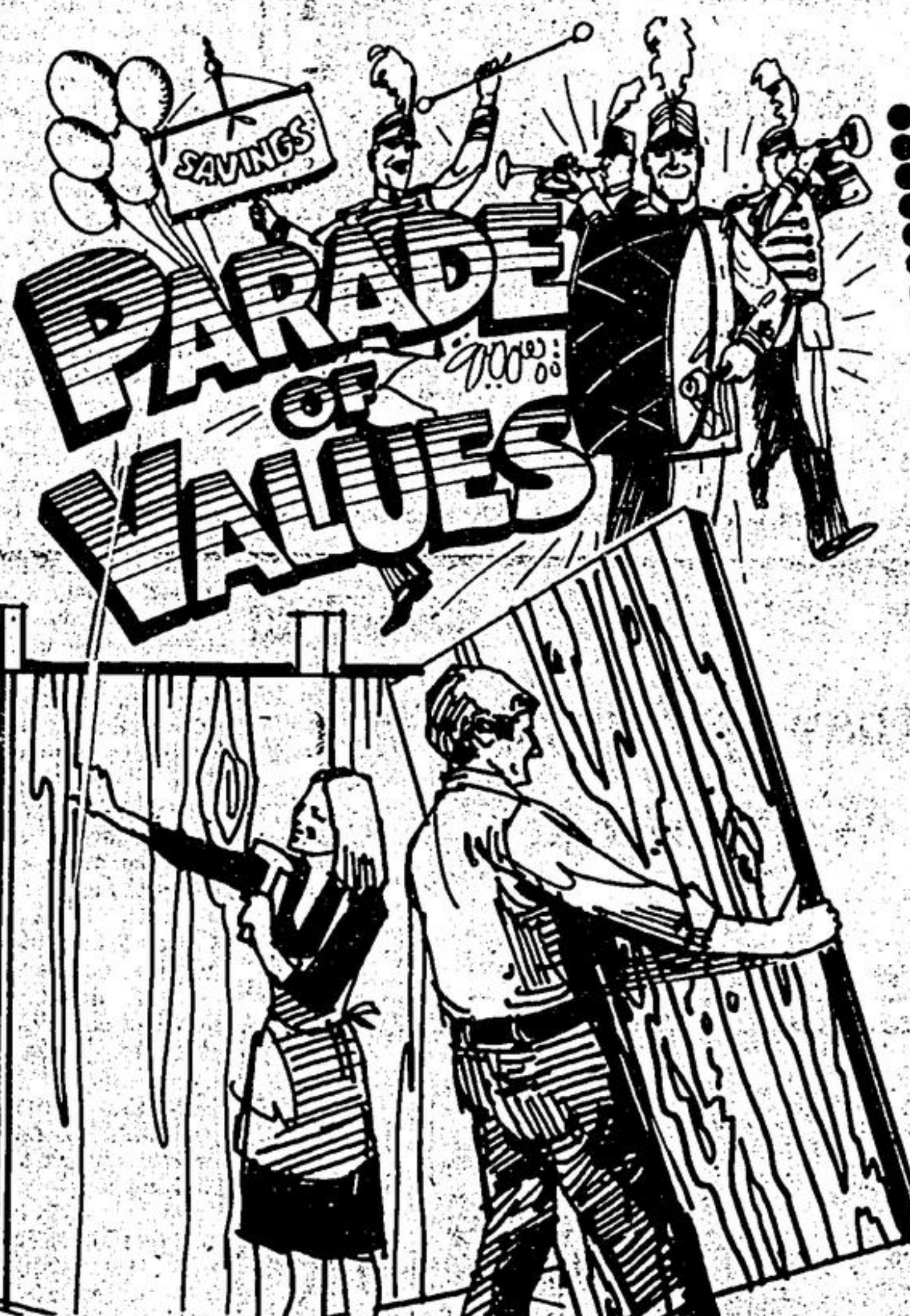
SALE ALSO INCLUDES DISHWASHERS, REFRIGERATORS & ELECTRIC RANGES

CARD'S

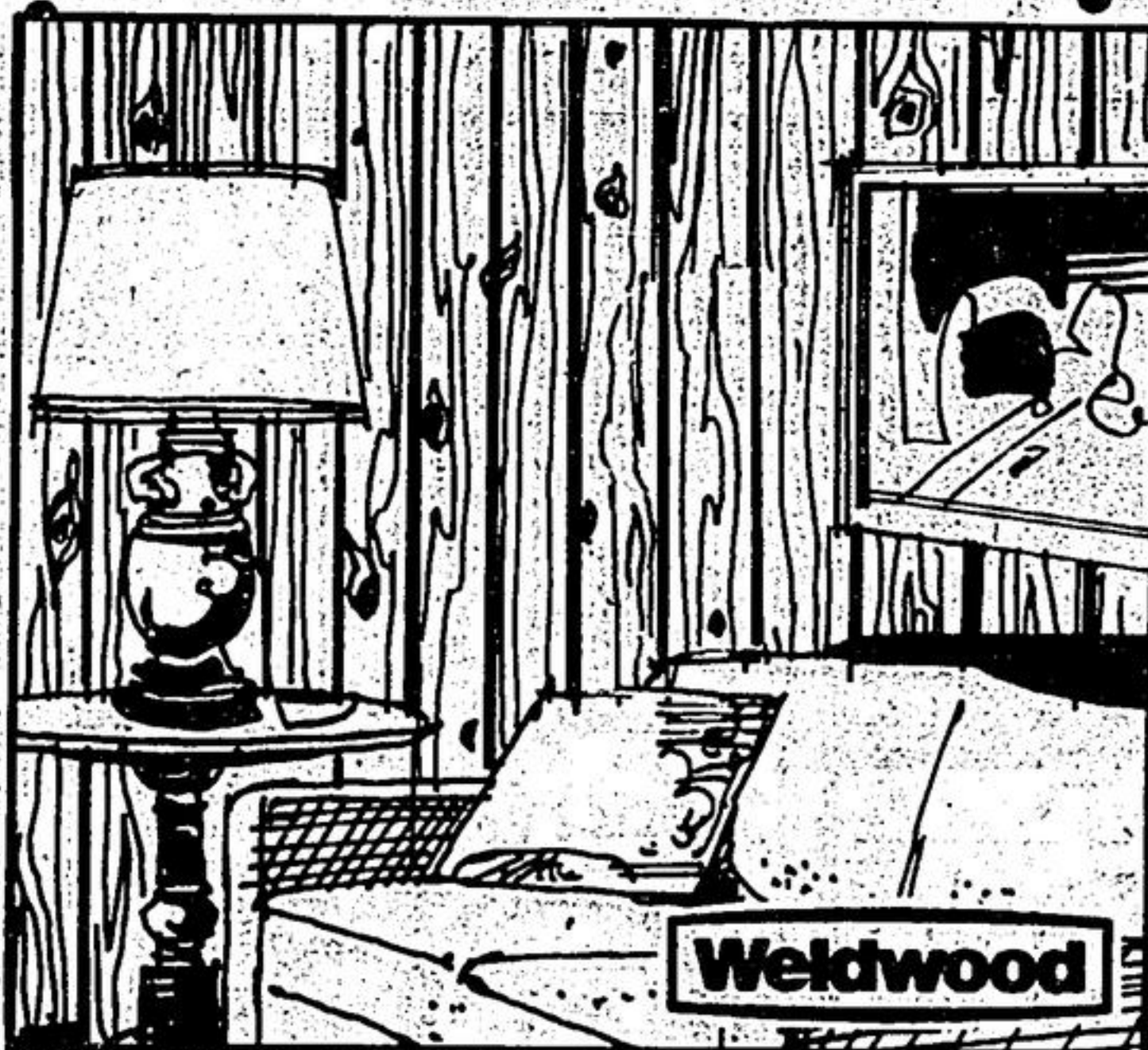
DOMINION HARDWARE & APPLIANCES

29 MAIN STREET WEST
STOUFFVILLE, ONTARIO 640-3622

Homecare



Lightweight easy to cut, prefinished Woodgrain Reproductions on Mahogany Plywood.



Weldwood

COACHMAN ROSEWOOD

Coachman is a pre-finished woodgrain panel that is a beautiful reproduction of a notable wood finish. The panels are designed to carry an unbroken pattern across the wall.

\$9.45

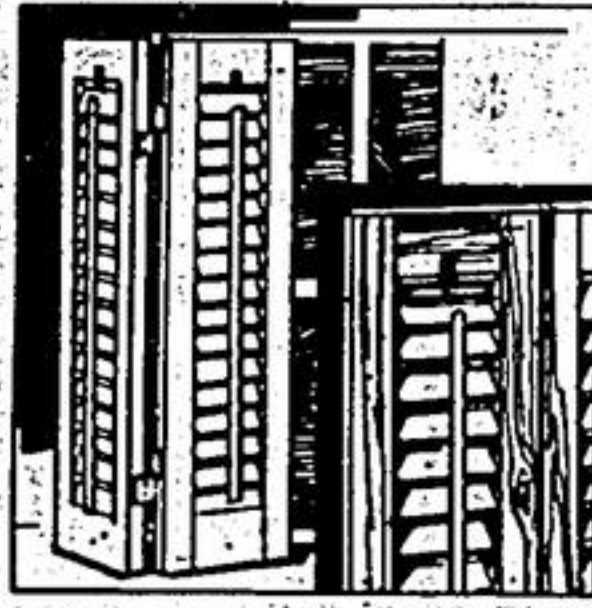
PER 4' x 8' PANEL

SHIP PLANK CYPRESS

This beauty is a realistic reproduction of weather-etched, rough sawed planking that has the deep texture of aged, ship's wood.

\$9.45

PER 4' x 8' PANEL



LOUVERED PINE SHUTTERS
Enhance kitchens, bathrooms or dens with these decorative interior louvered pine shutters. Louvers adjust for desired lighting. Made from sturdy pine.

FROM 7" x 10"
\$4.60 EACH SHUTTER TO 12" x 36" \$14.10 EACH SHUTTER



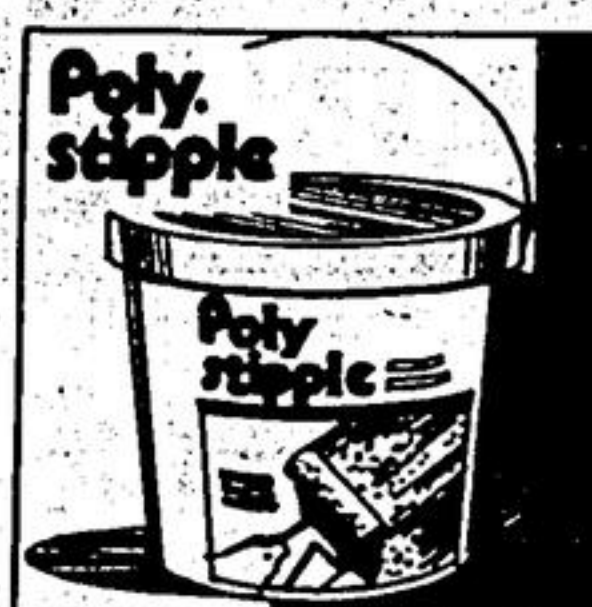
SPRUCE STRAPPING LUMBER
1 x 2's, 2 x 2's and 2 x 4's spruce strapping comes in 8 foot lengths. Ideal when building walls, sub floors and ceilings. So stock up on your lumber needs now.

1" x 2" x 8' .48 EACH
2" x 2" x 8' \$1.04 EACH
2" x 4" x 8' \$1.60 EACH



8 FT. STEP LADDER
Made of lightweight aluminum with the patented c-arch cut system for extra rigidity with full 3" rails. Has channel braces on legs front and back and heavy-duty slip resistant vinyl feet.

\$22.95



DECORATIVE STUCCO
Rooms virtually come alive when you apply the creative touch of Poly-stippe. The lightweight, white stucco for decorating walls and ceilings with that textured look.

\$11.25



CONSTRUCTION ADHESIVE
PL200... is the proven construction adhesive that will bond almost any material to any other material. It has remarkable holding strength and is easy to apply.

\$1.98 EACH



EXPANDED FOAM INSULATION
A lightweight insulating material that's easy to cut and install. Clean and doesn't irritate your skin. Moisture resistant.

4' x 8' x 3/4" SHEETS \$3.80
4' x 8' x 1 1/2" SHEETS \$7.20

Our Premium Interior Paint is sale priced for you!

Premium Interior Paint Type	StClair Everyday Low Price/Gal.	StClair Sale Price/Gal.
Flat Latex	10.99	7.97
Ceiling Flat Latex	9.99	6.97
Oil Base Flat	14.99	10.97
Semi-gloss Latex or Oil Base	14.99	10.97

Painter's essentials are on sale too!
50 mm (2") brushes on sale at 25% off
7 1/2" premium roller and tray set, hi and lo pile, Reg. \$4.99 SALE 3.99
1 mil plastic 8' x 12' drop sheet, Reg. \$1.69 SALE 1.19
StClair paint pad kit, Reg. \$5.99 SALE 4.99
PLUS MORE IN-STORE SPECIALS!
All StClair paint is 100% guaranteed!



StClair

The paint and paper people

Upper Canada Mall, Newmarket

898-2171

Open: Mon.-Fri., 9:30 a.m. to 9:30 p.m., Sat., 9:30 a.m. to 6 p.m.

SCHELL LUMBER LTD.

Homecare

BUILDING CENTRE

33 EDWARD ST.
STOUFFVILLE

640-3440

STORE HOURS
8 AM - 5:30 PM

FREE DELIVERY
PARKING AVAILABLE