

Clippers lose two straight

STOUFFVILLE — It was a case of first night jitters for the Anderson Haulage Clippers, when they lost to Port Hope 9-4 in their first league game of the season, at the Arena on Wednesday evening, Oct. 3.

Clippers' Bruce Rugelis played a strong game, in harness with Steve Spang who gave him two of his three assists. Rugelis tallied a hat trick for the Clippers during the second and third periods. Glen Gibson supplied the assist for his second goal.

The Clippers started badly, and it looked like a disaster was in the making when the first period ended with the Clippers trailing 5-0.

Things looked a little brighter after that. The Clippers came out and proved they could play as good a game as the visitors. Had coach Wayne Emmerson replaced the goalie a little earlier in the first period, no doubt the final score would have looked more respectable.

Ken Dix made a beautiful breakaway, halfway through the second period, and carried the puck right into the opposition net. It was then that the Clippers started to make a comeback.

One of the glaring faults in the game was the inability of the Clippers to post anyone in front of the Port Hope net. With everyone digging away in the corners, no one seemed to want to wait it out in front. Several passes came out of the corner which could have been translated into goals.

Dean Howes took over the net minding duties for the second and third periods and did a competent enough job in stopping a number of

tough shots from the point.

In their second game of the year the Clippers played away at Cobourg on Monday October 8 and went down 5-4.

Kelly Burrows, on an assist from David Raymer, put the Clippers on the board in the first period with no reply from the Cobourg team.

In the second, it all looked set for their first win of the season when Harold Wideman, from

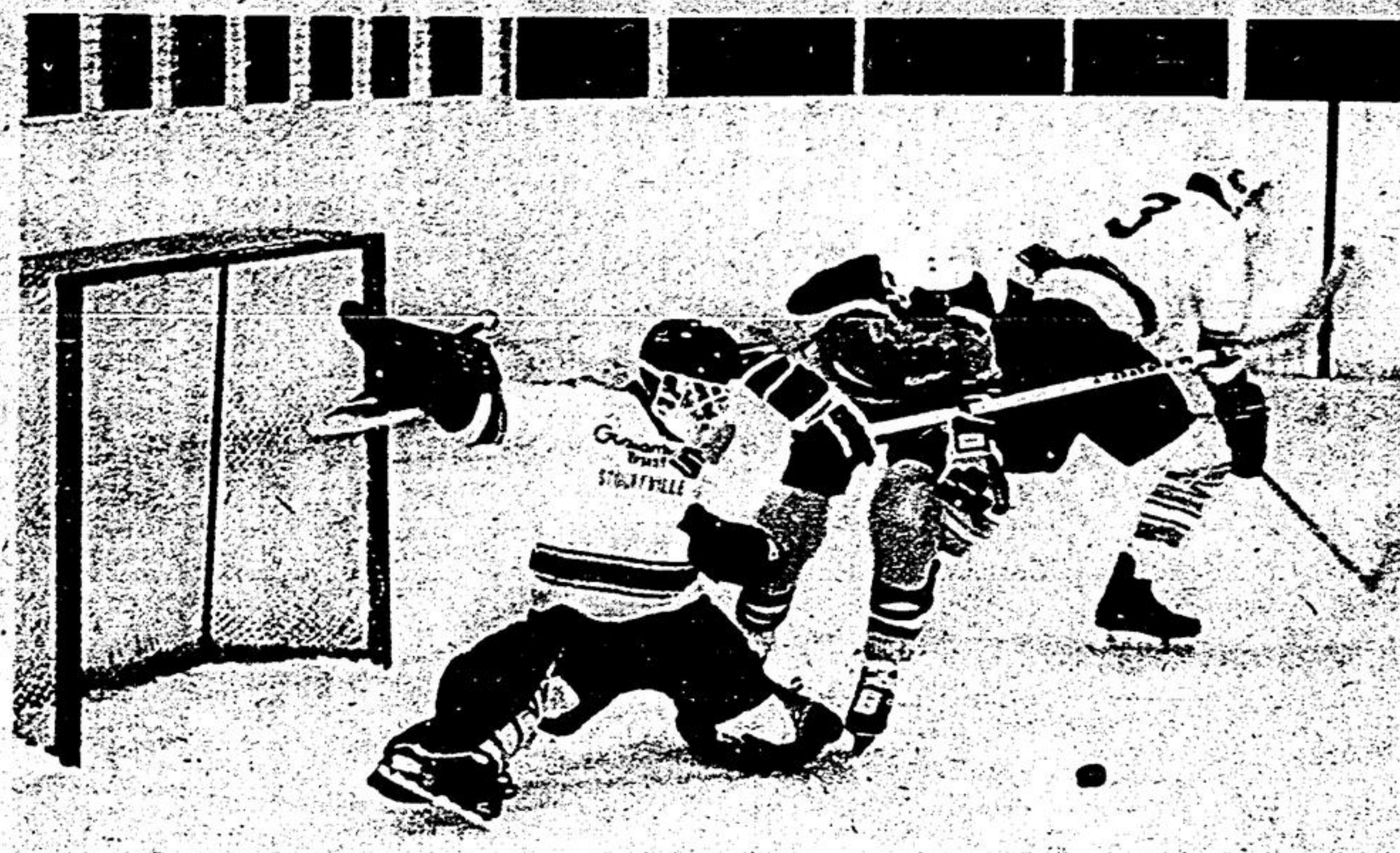
Kevin Bartley, collected the Clippers second goal, however, the penalty they collected minutes later gave Cobourg their chance to score.

The Clippers took a comfortable lead towards the end of the second period, with two goals from Bob Hughes, on assists by Harold Wideman and Kevin Bartley.

With a 4-1 lead at the

beginning of the third the Clippers were back in the penalty box for another four minutes, during which Cobourg added two more goals.

Being at the short end of the power play, the Clippers were obviously tired from having to cover and Cobourg tied it up 4-4. Seconds later Cobourg got the clincher and hung on to their lead to win 5-4.



Here we go again!

Bob Wagg, Guaranty Trust goalie was kept busy on Sunday morning. This was goal number nine in the making, on a shot in the third period by Ed. Rose of Pro Hardware. Jim Holt

Amateur hockey open season

STOUFFVILLE — The Stouffville Mens Amateur Hockey League started its season on Sunday morning at its new home, Stouffville Arena. All six teams played their opening games of the season.

Two more teams have been added to the league line-up since last year — Smirthwaite Heating and Fawns Sports. Both newcomers sprang a surprise in winning their opening games. Smirthwaite squeaked a 5-4 win over Success Steak House and Fawns Sports dumped Steerburger an impressive 5-1.

What must be rated as the mis-match of the day was the game between current champions Pro Hardware, and Guaranty Trust who ended last season at the

bottom of the standings. The reigning champs scored not only a shut-out, but a knock-out, with a 10-0 win.

First game of the day was Smirthwaite Heating and Success Steak House. For Smirthwaite the goals and assists came from Jim Pearsall, Bob Heeneey and Gene Bonds, whilst Wayne McCann made a beautiful breakaway in the third period to carry the puck into the net for Smirthwaite's fourth goal. It was a close game and despite all the hard work by Arends, Teeter and Bell up front, goalie Jamie Copeland could not stop Pearsall and Bond collecting the clincher.

The Smirthwaite team for the 79-80 season is as follows: Wayne Oldham (goalie), Ken Smirthwaite, Wayne

McMann, Don Kenny, Tom Coward, Angelino Papalinius, Jim Pearsall, Gen Bonds, Elio Zaffranieri, Murray Ferguson, Bob Le Mottee, Bob Heeneey, Jeff Agnew.

Success Steak House line-up: Jim Copeland (goalie), Ron Brooks, Clint Dickenson, Jim Teeter, Ron Arends, Ron Ellis, Gary Yoshita, Jim Kidd, Joe Martinello, Roy Mountjoy, Mel Gornick, Barr Hart, Bill Carr, Jim Bell.

In their opening game against Steerburger, Fawns Sports had no difficulty in tallying five goals in the first two periods, to win 5-1, Brian Sheridan collected the opening goals in the first and second periods with the remainder coming from Don Chillman, Bill Ormson, and Sam Casarina. Assists came

from John Miron, Larry Black, Sam Casarina and Bill Ormson.

Fawns line-up for the season is: Garry Williams (goal), John Miron, Steve Jones, Brian Sheridan, Bill Ormson, John Casselman, Peter Mubley, Larry Black, Don Chillman, Sam Casarina, Forbes Stanway, Al Hachey, Bill Woods, John Bell.

Steerburger line-up is as follows: Doug Graham (goalie), Bob Watson, Eric Scaife, Mike Sacco, Steve Davis, Ron Graham, Doug Major, Brian Bond, Doug Wall, John Beal, Don Schellenberg, Dan Farquarson, Paul Kirby, Phil Pirie.

Pro Hardware's line-up is as follows:

Rick Romanyck, (goalie), Lionel Villeneuve, Ed Rose, Frank Kafun, Bill Corner, John Blair, Robert Fisher, Al Parker, Danny Catali, Rick Atkinson, Doug Wilson, Gerry Cole, Charlie Upshall, Jim Gibson.

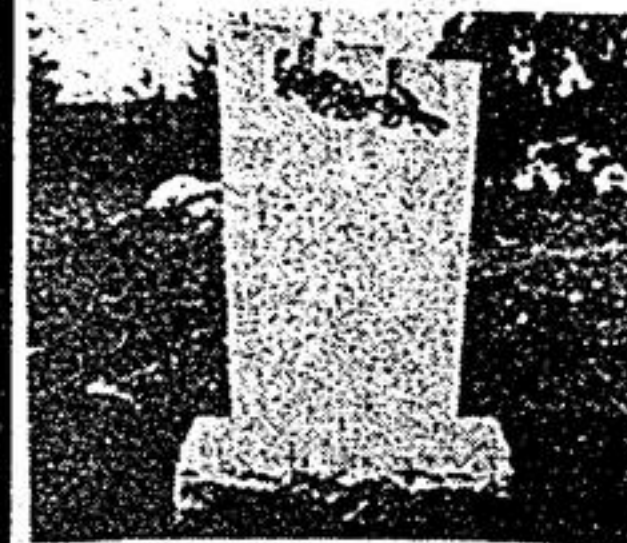
LUESBY MEMORIAL CO. LTD.

93 MAIN ST. S. NEWMARKET 895-4931

MEMORIALS OF DISTINCTION

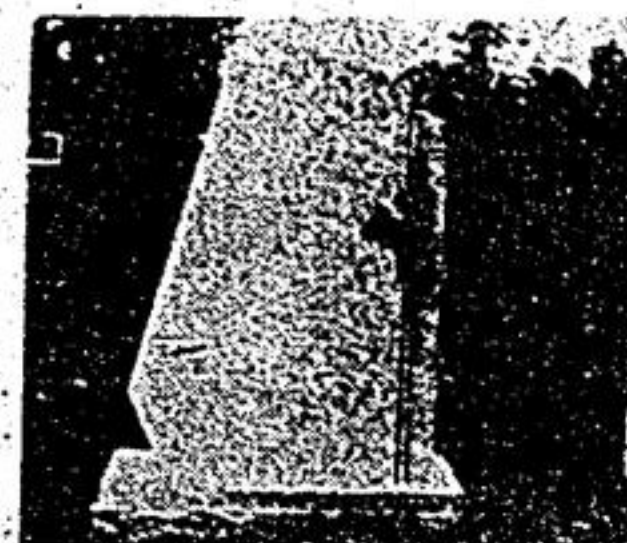
GRANITE - MARBLE - BRONZE

CEMETERY LETTERING & RENOVATIONS
CUSTOM DESIGNING & LETTERING
A SPECIALTY OF OUR OWN CRAFTSMEN.



Quality & Satisfaction assured by our own Written Guarantee

FOR PERSONAL SERVICE VISIT OUR SHOWROOM ON MAIN ST. AT QUEEN ST. SOUTH OF DAVIS DRIVE OR CALL R. TOMKINSON 852-7222



HOME APPOINTMENTS AND TRANSPORTATION BY REQUEST

CO-OP prices effective October 10 to 20, 1979

FALL SALE



DIRECT DRIVE BARN FANS!

- Steel welded housing box
- Balanced fan blades for less vibration and noise
- Totally enclosed motor with thermal overload protection
- Aluminum shutters angle-mounted for positive closing
- High speed 1725 rpm; low speed 850 rpm; 115 volt
- 12" 2-speed fan: 1/4 H.P. motor, Framing size 15" x 15", 507-041
- 18" 2-speed fan: 1/2 H.P. motor, Framing size 21" x 21", 507-039

11866

13666



Men's Deluxe Navy Nylon Parka 2988

Keep warm the light, comfortable way with this zipper front parka with half quilt lining and half pile. Fitted, detachable hood, fully lined with drawstring. Slash pockets. Available in even sizes 36 to 46. 546-808



Insulated Coverall 4444

Polyester-cotton coverall with nylon-polyester insulation. Perma pressed and "cunguarded". S. M. L. X. 546-804



STOUFFVILLE CO-OP

Farm Hardware Petroleum Products Feeds Seeds Fertilizers Lawn, Garden supplies Town & Country Supplies



8-Ton Hydraulic Jack 2999

Operates in vertical, horizontal or angular positions. Heavy-duty cast steel base, welded steel body. Adjusts 8-1/2" to 18" in height. 571-102



Heavy Duty Rotary Hog Feeder 6266

Hog feeder popular for pen feeding with an adjustable feed flow. Heavy duty 12 gauge feed pan. 5 bushel feed capacity. Also features rubber inside feed tank preventing feed from bridging. Less feed wastage than on a regular feeder. 577-016



All-purpose Wheelbarrow 5844

Wood frame with no-seam one-piece steel tray. 2-ply pneumatic tire with tube. 4 cu. ft. dry capacity. Unassembled. 591-000



Fleece-Lined Gloves 999

Heavy fleece lined top-grain Cowhide. Cowhide back. 546-405. 8-99

Lined mitten cream cowhide. Stained cuff. Elastic at wrist. 546-421



All-Purpose Showel 655

Good quality hot formed steel blade. "D" handle. Great to keep in the car trunk. 590-019



24" Aluminum Snow Pusher 1255

Special alloy heavy-gauge alum. "D" grip. 590-073

18" Steel Snow Pusher. 590-077



Work Sock 199

Combination of 56% wool, 29% nylon and 15% acrylic. Elastic at top. Cushioned with botany wool. Stretch fit. Ass't. colours. 546-121

Offer ends Wed. Oct. 17

Factory Carpet

Hot Sellers!

up to 50% off*

Hot Sellers means hot savings. Almost all our carpet, area rugs and vinyl flooring feature Hot Seller prices up to 50% off *the Factory Carpet Price

Satisfaction of your money back.

Shop in person, Shop in home 663-2170 under no obligation. Call for free in home estimate.

19 Giant warehouse locations.

Factory Carpet Outlet

Registered Trade Name of D. B. Overhead Ltd. We do everything but make the Carpet!

Stouffville Co-op
47 Edward St. 640-1550

HOURS OPEN: Mon-Fri: 9 a.m. to 9 p.m., Sat: 9 a.m. to 6 p.m.
 1618 DUNDAS ST. E. WHITBY/OSHAWA E. OF THICKSON RD., OPP. WHITBY MALL. 576-1500
 10720 YONGE ST. N. RICHMOND HILL AT ELGIN MILLS RD. 883-1723
 Scarborough, 1399 Kennedy Rd. • Downsview 1017 Finch Ave. W. • Mississauga 1658 Dundas St. E.