

Plan supports flow

What most people do not realize about the Markham Fair is the amount of planning involved in laying out the fair in the most efficient manner.

The buildings are set in a semi-circular or arch shape, with the main buildings at the base of the arch. The arch begins with the General Exhibits Building, which houses the work of school children, field crops and the displays of the 4-H Club.

Next to the General Exhibits Building is the Women's Building, containing entries in such classes as needlecraft, art, antiques, preserves and quilts.

Beside the Women's Building is the Commercial Building, with exhibits from field crops to crafts.

At the other end of the arch is the Livestock Building, its centre area serves as a showing area surrounded by stables and pens where the animals are housed. Small animals such as rabbits, calves (Guinea

horses, harness horse and greyhound racing crowds, like the gathering point for the children's parade and Saturday's official ceremonies.

In the centre of the buildings in the arch are the concession stands, where people can buy food and special sale items.

The northeast corner of the grounds is set aside for the Conklin Midway, separated from the rest of the fair by the buildings to cut down on the noise.

Fair planners purposely laid out the grounds in this manner, to assure a constant flow of people in a semi-circular way.

Parking aplenty

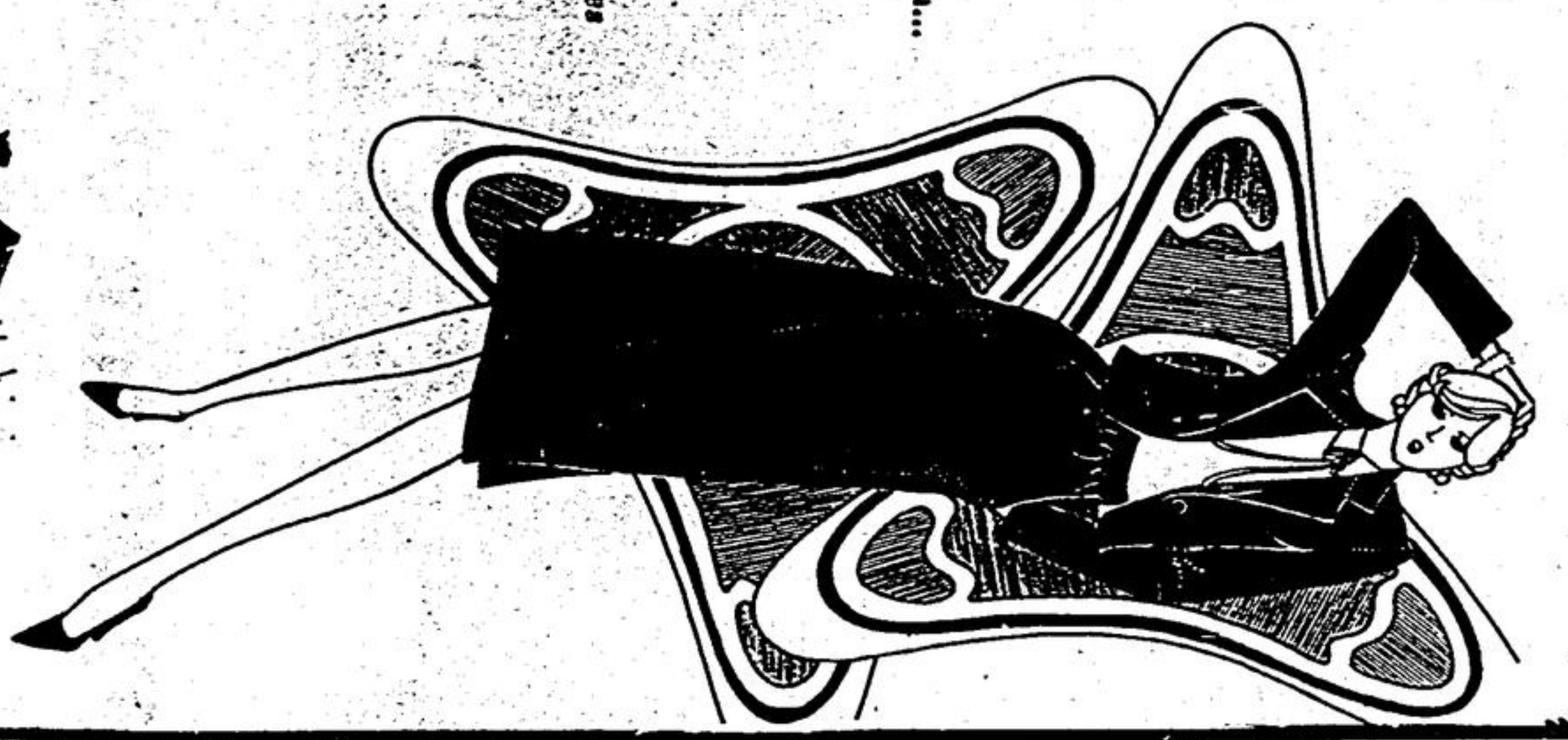
In the days before the change in the Markham Fair site, visitors to the fair had to battle poor parking conditions and traffic jams.

All of this has changed with more to the new site of the Markham Fair, at 18th Avenue and McCowan Road.

Of the 100 acres bought for the fairgrounds, 60 are devoted to parking. This Markham Fair has room for 6,000 cars.

On the busy days, when 10,000 cars are expected, the fair board has permission to borrow surrounding fields.

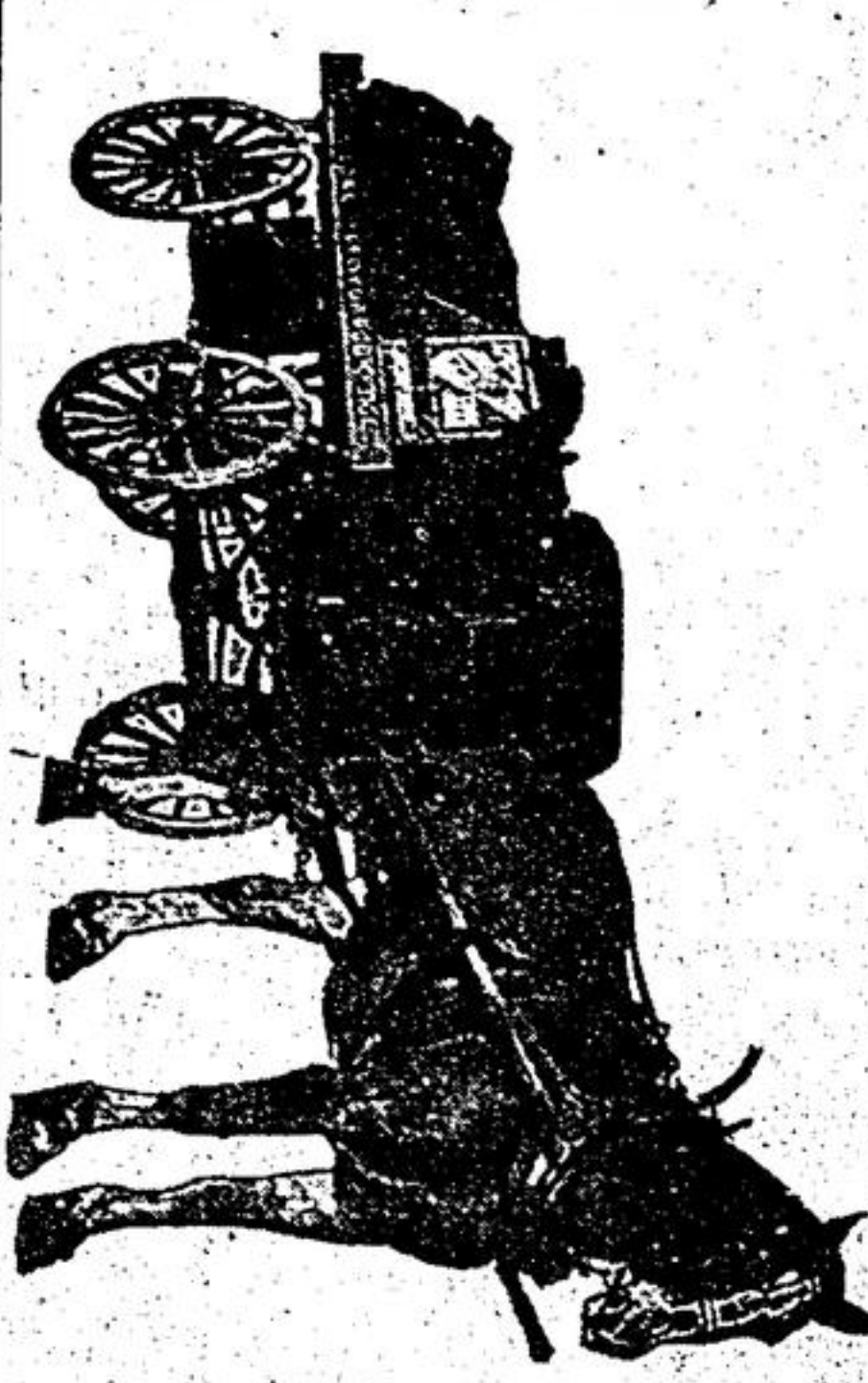
OPEN TONIGHT



"Suitable" never fits season...
A short curly jacket accents the waist...
knee grazing dirndl flatters the leg...
A soft blouse completes the new look for fall...

FREE PARKING at REAR OF STORE
TRENDSETTER
PORTS INTERNATIONAL
48 Main St. Markham 294-0966

GOAL-WOOD



WOOD
Full Cord 12" or 16" **\$165.**
Half Cord 12" or 16" **\$85.**
Quarter Cord 12" or 16" **\$43.50**

COAL
STOVE & NOT COAL
BAGGED 1/2 TON... \$124.00
LOOSE 1 TON... \$115.00
BULK FIREPLACE COAL
BAGGED 1/2 TON... \$87.00
LOOSE 1 TON... \$125.00
CASH & CARRY
45 LB BAGS STOVE OR UNIT... \$4.95
100 LB FIREPLACE OR HO... \$9.95
CAMEL COAL 40... \$11.50
THE FIREPLACE 40... \$11.50
BLACKBURN COAL... \$11.50

DOMINION
GOAL & BUILDING SUPPLIES
UNIONVILLE 297-1732
6 STATION STREET
MON. TUES. WED. 7:30 A.M. - 5 P.M.
THURS. FRI. 7:30 A.M. - 6 P.M.
SAT. 7:30 A.M. - 2 P.M.

MARKHAM FAIR DAYS DEALS

\$50 BETHESDA SALES SERVICE FAIR DEALS

\$50 ON HIS WORLD CHAMPIONS SERVICE

Make Your **BEST DEAL THEN USE** this **\$50.00** Coupon towards your deposit to order your **1980 ARCTIC CAT FROM**

BETHESDA SALES & SERVICE

R.R. No. 4 STOUFFVILLE 888-1166 & 884-7774
(Coupon offer good only at MARKHAM FAIR Sept. 27-30)
LIMIT ONE COUPON PER MACHINE SALE
HOME of the WORLD CHAMPIONS

ON YOUR WAY TO OR FROM THE FAIR, BE SURE TO STOP IN AT DISCOUNT MUSIC WAREHOUSE

ON 7TH LINE JUST NORTH OF HWY. 7 - 3 MILES SOUTH OF THE FAIRGROUNDS.

THIS WEEK'S "FAIR" SUPER SPECIALS

<p>WAYON JENNINGS - GREATEST HITS ONLY \$4.44 8-TRACK & CASSETTE \$4.88</p>	<p>LED ZEPPELIN - IN THROUGH THE OUT DOOR \$4.88 8-TRACK & CASSETTE \$5.44</p>	<p>ELO - DISCOVERY \$4.44 8-TRACK & CASSETTE \$4.88</p>	<p>GOOD BROTHERS - SOME KIND OF WOMAN \$4.44 8-TRACK & CASSETTE \$4.88</p>
<p>CHARLEY PRIDE - YOU'RE MY JAMAICA \$4.44 8-TRACK & CASSETTE \$4.88</p>	<p>TROOPER - FLYING COLONS \$4.44 8-TRACK & CASSETTE \$4.88</p>	<p>THE NEW LP FROM DREAM POLICE ONLY \$4.44 8-TRACK & CASSETTE \$4.88</p>	<p>DANIELS BAND - MILLION MILE REFLECTIONS \$4.44 8-TRACK & CASSETTE \$4.88</p>
<p>FOREIGNER - THE NEW LP FROM FOREIGNER - HEAD GAMES ONLY \$4.88 8-TRACK & CASSETTE \$4.88</p>	<p>KENNY ROGERS - THE GAMBLER ONLY \$4.44 8-TRACK & CASSETTE \$4.88</p>	<p>CHEAP TRICK - LIVE AT THE BUDDAKAN - FEATURING THE HIT SINGLE "I WANT YOU TO WANT ME" ONLY \$4.44 8-TRACK & CASSETTE \$4.88</p>	<p>BOB DYLAN - SLOW TRAIN COMING \$4.44 8-TRACK & CASSETTE \$4.88</p>
<p>BING CROSBY SEASONAL ONLY \$1.99 ON LP 8-TRACK & CASSETTE</p>	<p>COUNTRY KINGS - 20 ORIGINAL COUNTRY HITS ON LP \$2.69 8-TRACK & CASSETTE</p>	<p>IF YOU'RE AN ELVIS FAN, DON'T MISS THIS COLLECTOR'S ITEM ELVIS 7 ALBUM BOXED SET - 100 SONGS REG. \$69.98 retail value NOW ONLY \$29.95 WHILE OUR SUPPLY LASTS</p>	<p>Special selection of hundreds of LPs, 8-tracks and cassettes, priced as low as \$1.99 and \$2.99 Don't miss these bargains CHUM - TOP 30 HIT SINGLES \$1.19</p>

WE'RE ON YOUR WAY, TO OR FROM THE FAIR - IT WILL BE WORTH YOUR WHILE TO STOP IN.

LIMIT ON ADVERTISED SPECIALS ONE EACH PER CUSTOMER
Overall lowest prices on all records and tapes anywhere!
1000s to choose from: rock, pop, country, big bands, disco, children, classics and international.

We're a little out of the way - but it will be worth your while to find us

DISCOUNT MUSIC WAREHOUSE LIMITED

294-2066 7th line, just north of Hwy 7 - 1 1/4 miles west of Hwy 48
Open Thursday and Friday nights until 9 p.m.

WOODBINE	7th LINE	DISCOUNT MUSIC WAREHOUSE LIMITED	RECORDS & TAPES	7th LINE	WOODBINE
7th LINE	WOODBINE	DISCOUNT MUSIC WAREHOUSE LIMITED	RECORDS & TAPES	7th LINE	WOODBINE