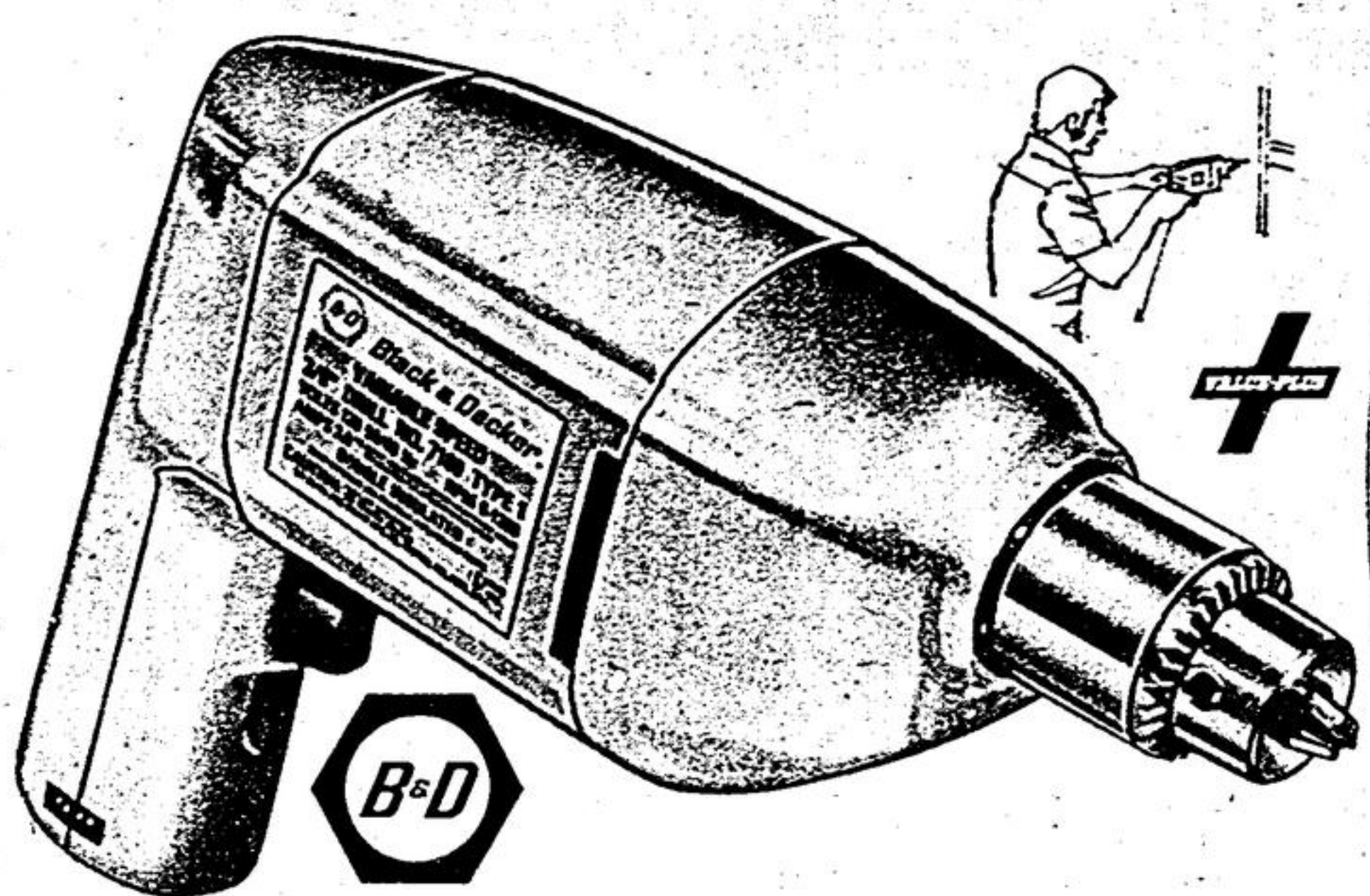


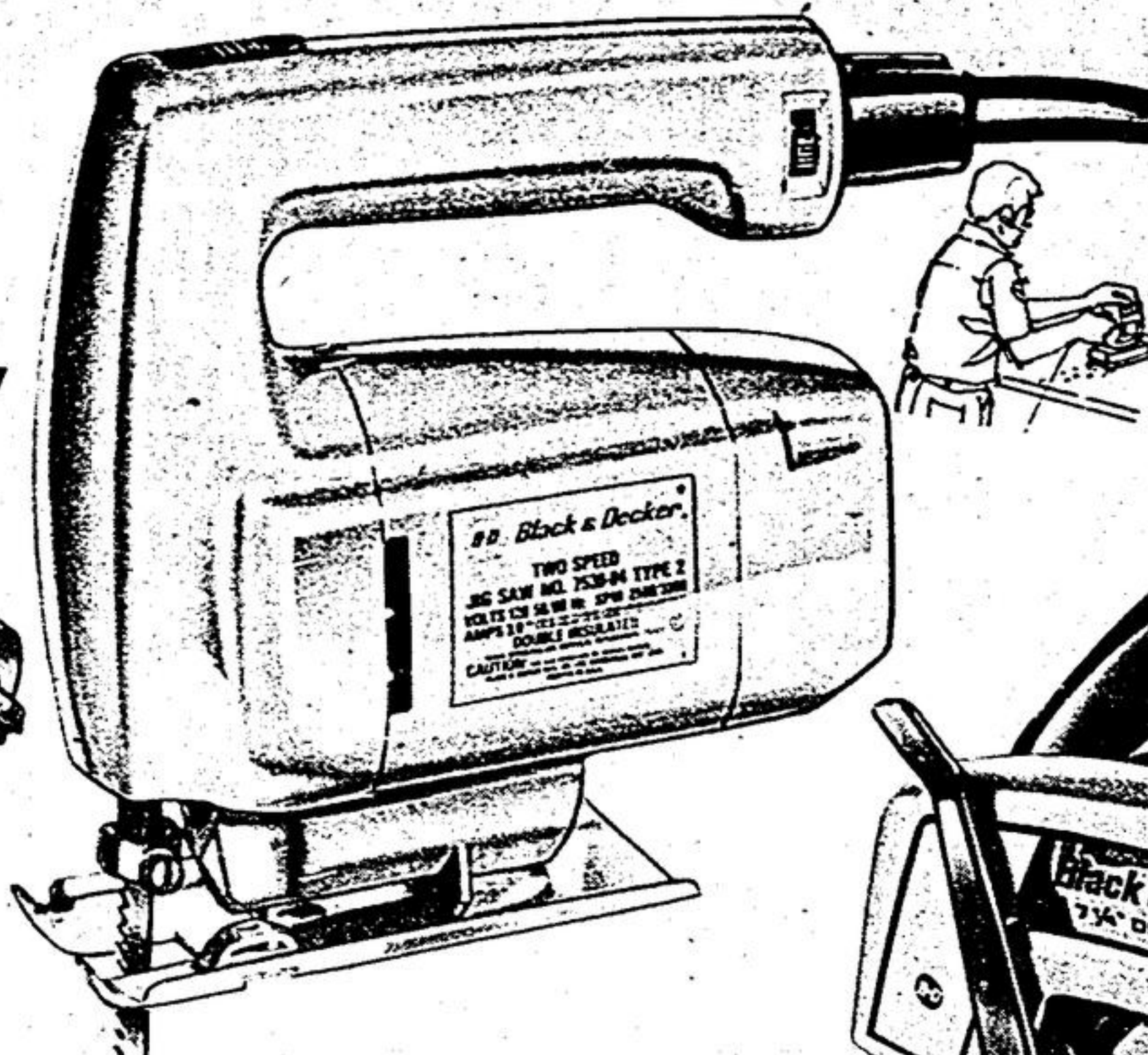
# SEPTEMBER SUPER SALE



## Variable-Speed B & D 3/8" Drill

Regular \$31.95  
**27<sup>88</sup>**

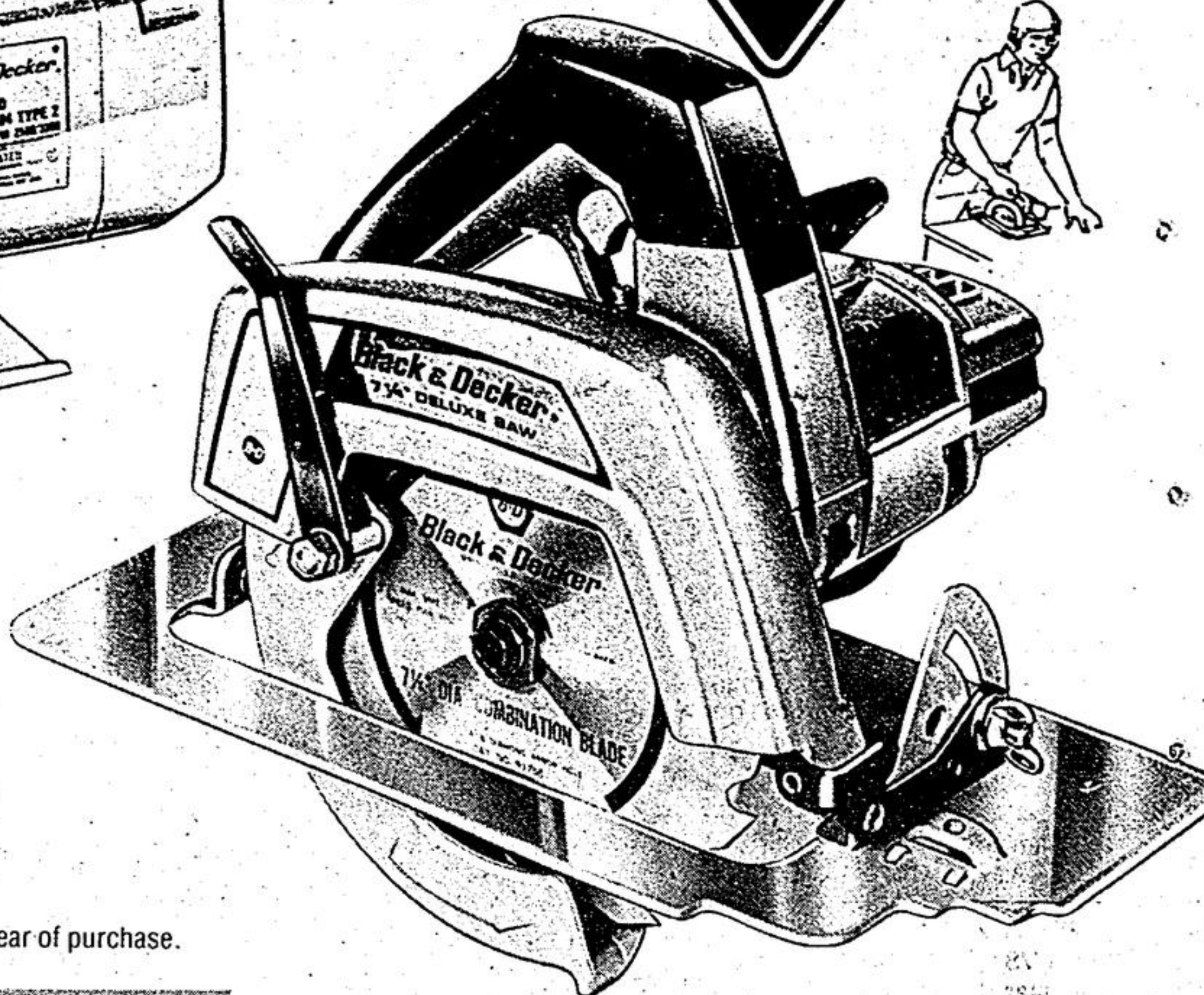
'Value-Plus' model #7180 lets you pick the speed to suit the job. Double-insulated 3-amp motor and double reduction gearing for extra torque; 0 to 1200 rpm; 6-ft detachable cord. 54-2856



## 2-Speed Jig Saw

Regular \$24.95  
**19<sup>88</sup>**

'Value-Plus' model #7530-04 slows down on tight corners and speeds up on straight cuts. Double-insulated 3-amp motor develops 2500 or 3200 spm. Cuts angles to 45°. Complete with blade. 54-8107



## 7 1/4" Circular Saw

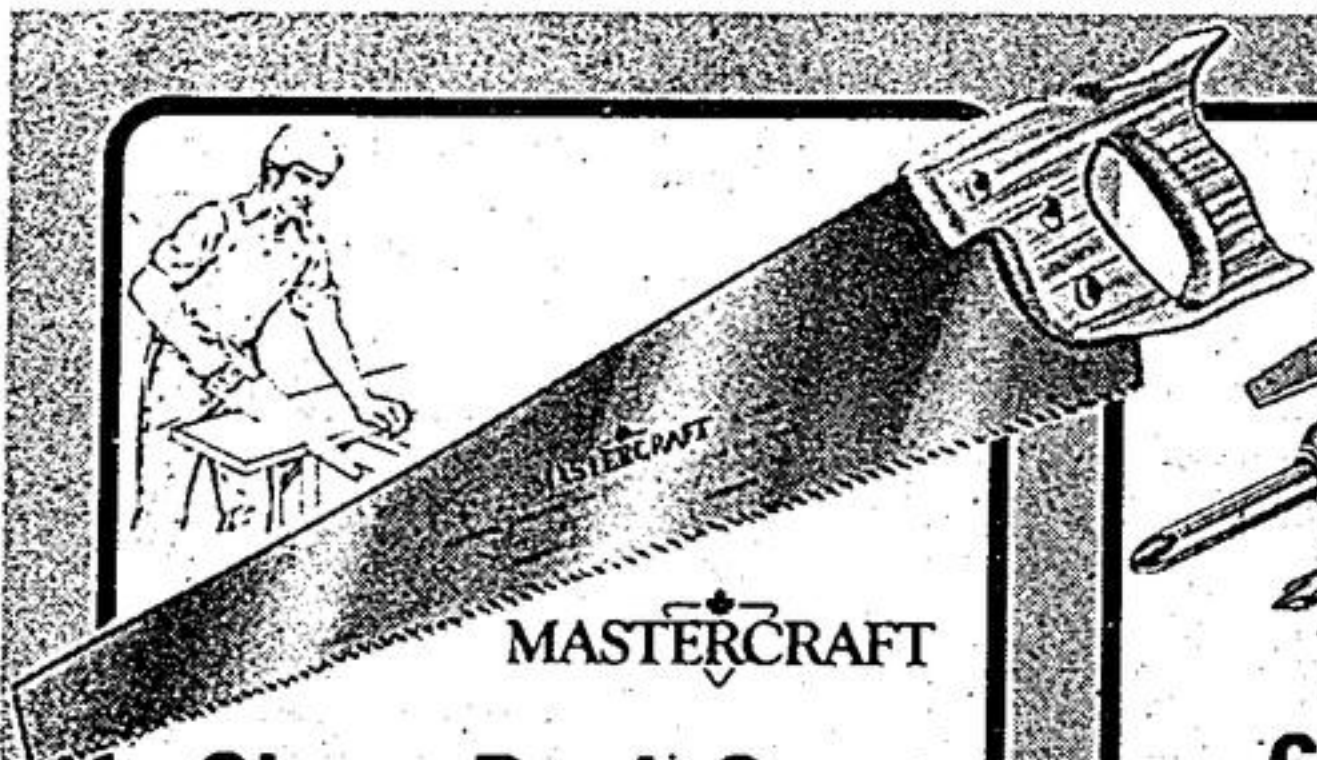
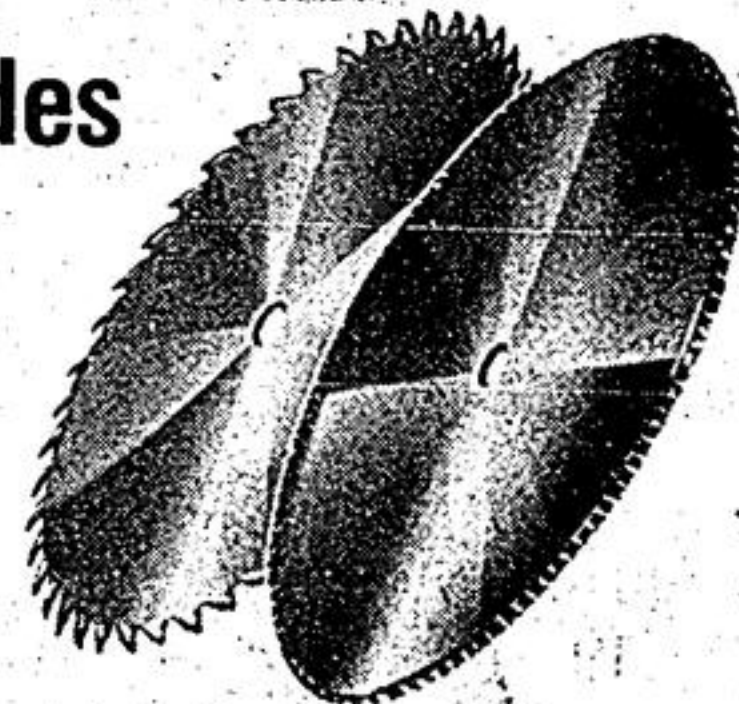
**52<sup>88</sup>**  
Special Purchase

'Best' model #7320 with wrap-around shoe for firm support. Roller bearing equipped at heavy load points for long life. Burnout-protected 9.5-amp motor develops 4700 rpm. Cuts 2 3/8" at 90° and 1 7/8" at 45°. 99-2295

## 7 1/4" Circular Blades

Special Purchase  
**5<sup>99</sup>**  
Card of 2

Combination and plywood types. 7 1/4" for 1/2" arbors: 5/8" round, 13/16" diamond. Heat-treated, precision-filed. 99-3632



## Skew-Back Saw

Regular \$9.99  
**8<sup>44</sup>**

MASTERCRAFT quality. All-purpose handsaw with sharpened 22" (10-point) blade. Contoured beechwood handle. 57-7459



## 6-in-1 Ratchet Driver

Regular \$10.95  
**8<sup>95</sup>**

MASTERCRAFT. Hollow plastic handle stores 2 Slot, 2 Phillips and 2 Robertson bits for quick change-over. 57-3530

Save \$2.00

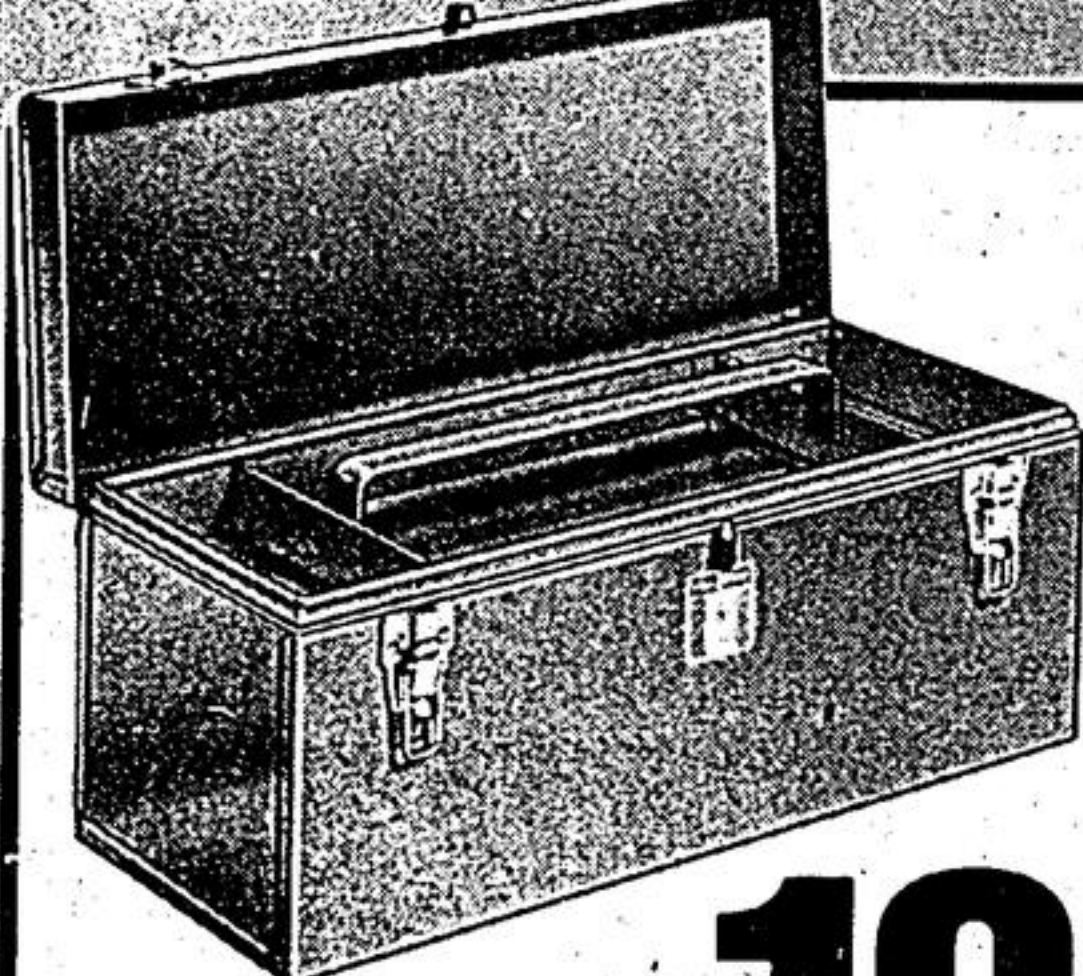


## 21-Pc Socket Set

Regular \$19.95  
**15<sup>95</sup>**

MASTERCRAFT. Your choice of SAE or Metric sizes. Includes ratchet handle, extensions, nut driver, metal case. 58-9161X

Save \$4.00

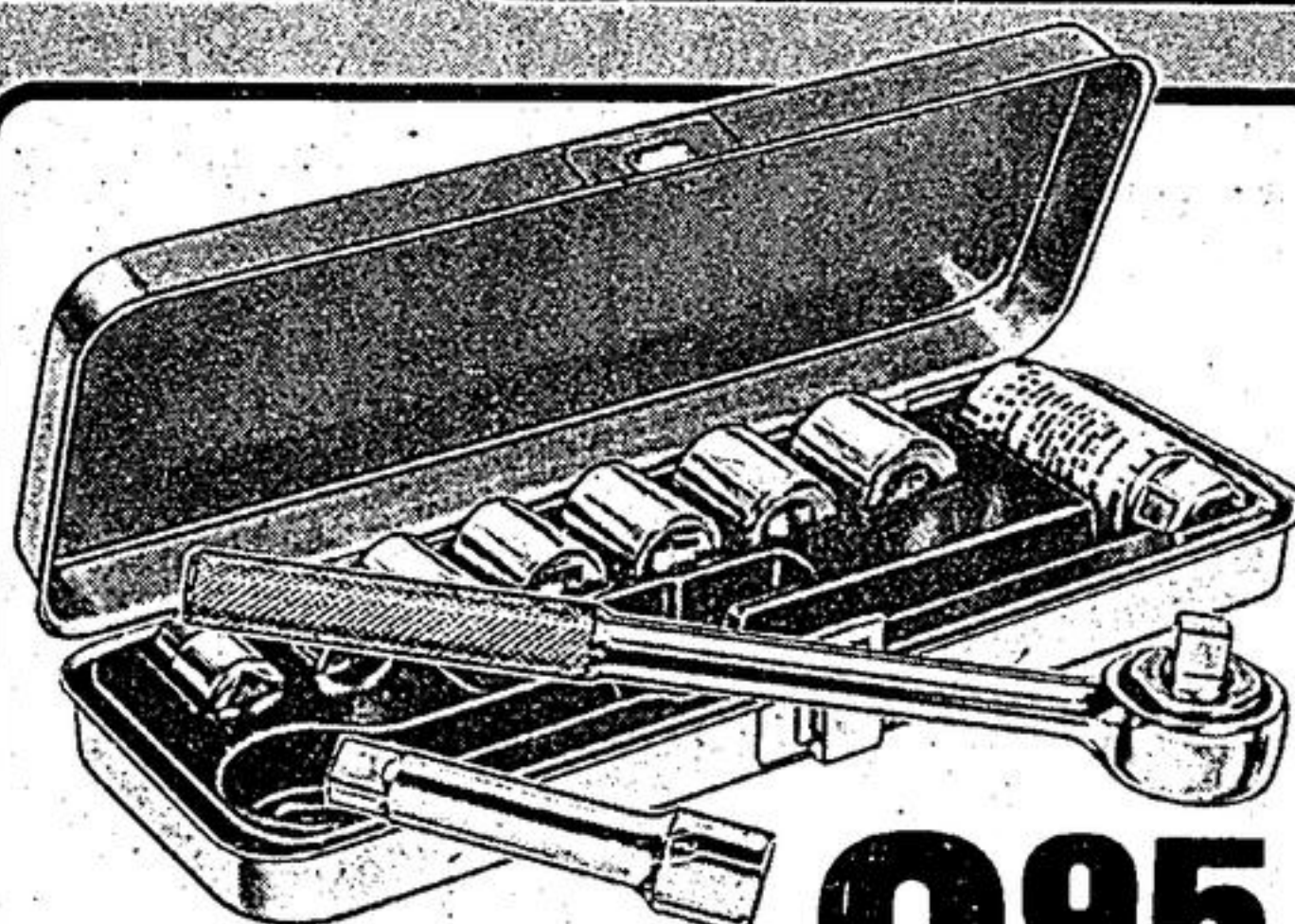


## Mechanics' Tool Chest

Regular \$15.99  
**13<sup>99</sup>**

Pro 22-gauge steel built for storage of big tools. Features separate tote tray for easy access. Handy piano-type hinge, built-in padlock-eye and plated hasps. About 21 x 8 3/4 x 9 inches high. 58-0818

Save \$2.00



## 11-Pc Ratchet Socket Set

Special Purchase  
**9<sup>95</sup>**

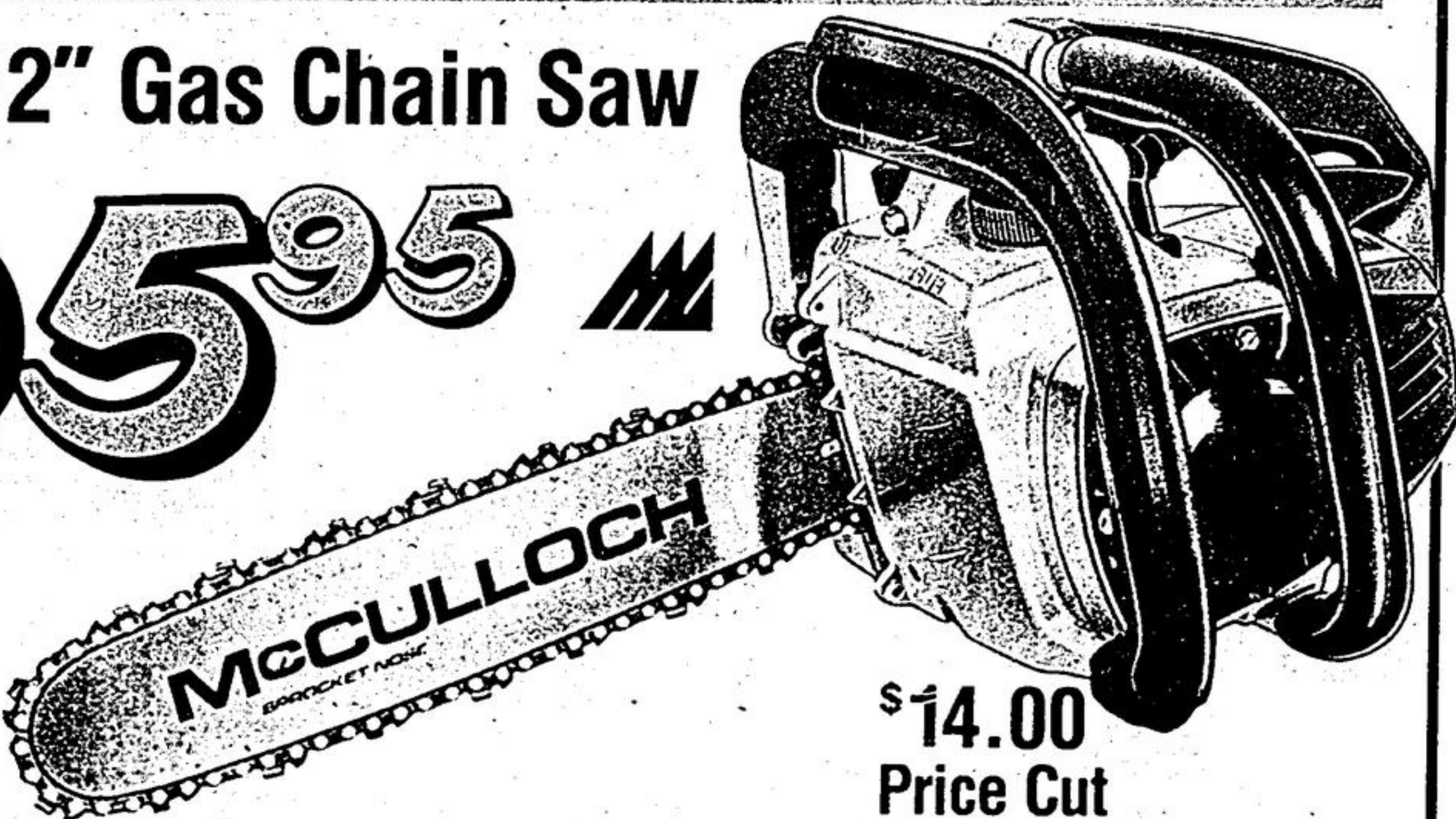
Your choice of SAE or Metric sizes. Set includes: Ratchet Handle (8" or 200 mm); Extension Bar (3" or 74 mm); Spark Plug Socket (13/16" or 21 mm); Seven sockets (7/8 to 3/4" or 10 to 19 mm). 99-1706X

## McCulloch 12" Gas Chain Saw

Regular \$109.95

**95<sup>95</sup>**

Mac 110 works like a beaver! Powerful 32 cc engine; automatic oiler with manual override for extra delivery. Safety features: chain brake, chain catcher, hand guard, super quiet muffler shield. Compact 8 1/2-lb. 58-5644



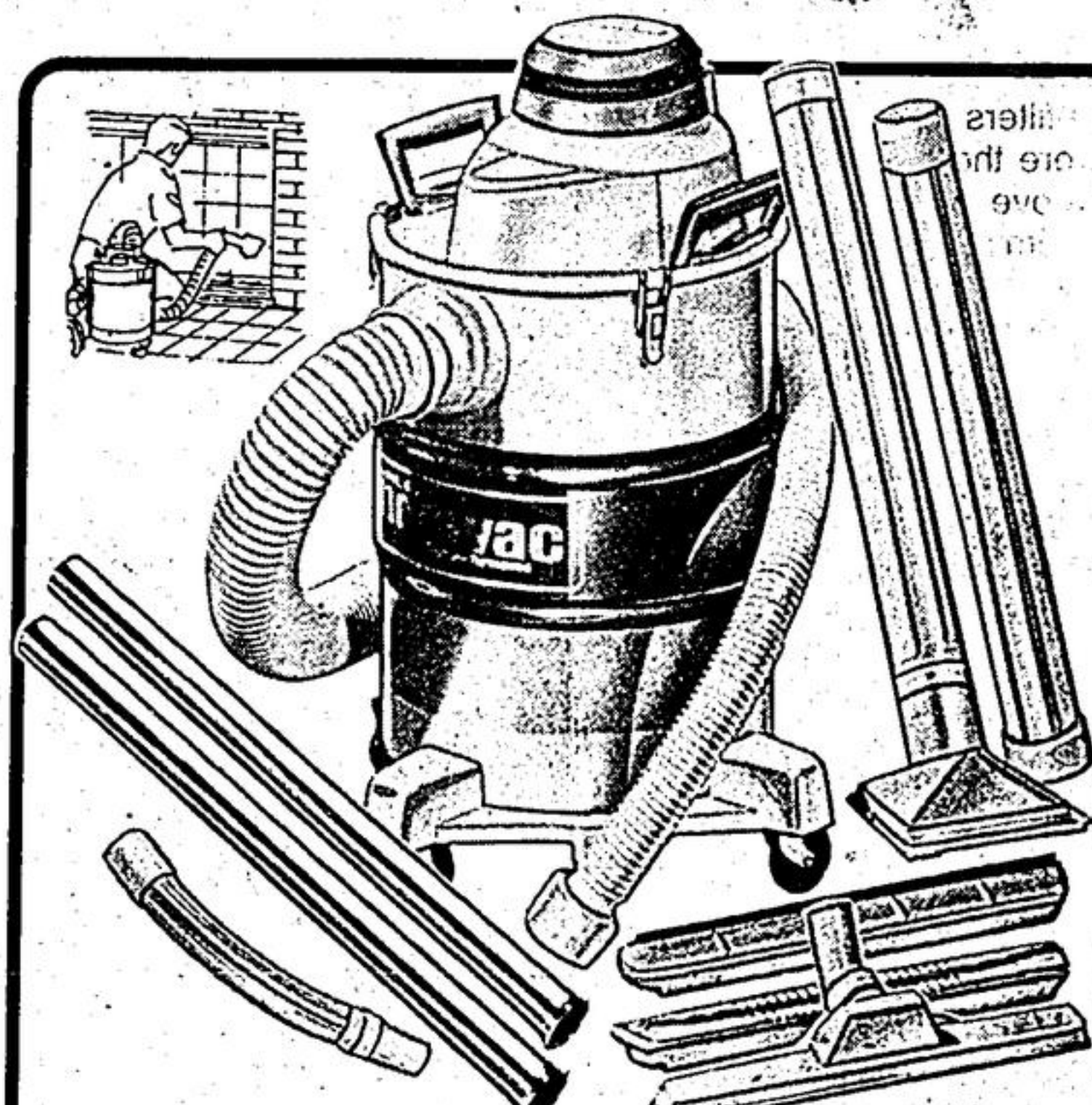
\$14.00  
Price Cut

## High Performance Wet/Dry Shop Vac

Save \$10.00

**75<sup>95</sup>**  
Regular \$85.95

5-Imperial Gallon model with industrial-type bypass motor — gulps up to 135 cu ft per minute. Industrial 2 1/2" accessories: 6' hose, 2 extension wands, 6" utility nozzle for bulk dry pick-up. Domestic 1 1/4" accessories: 6' hose, 2 extension wands, master nozzle, squeegee shoe, rug shoe and curved wand. 4-wheel dolly. 120V AC/DC. 54-0018



Just say 'Charge-It' — Use your Canadian Tire Card