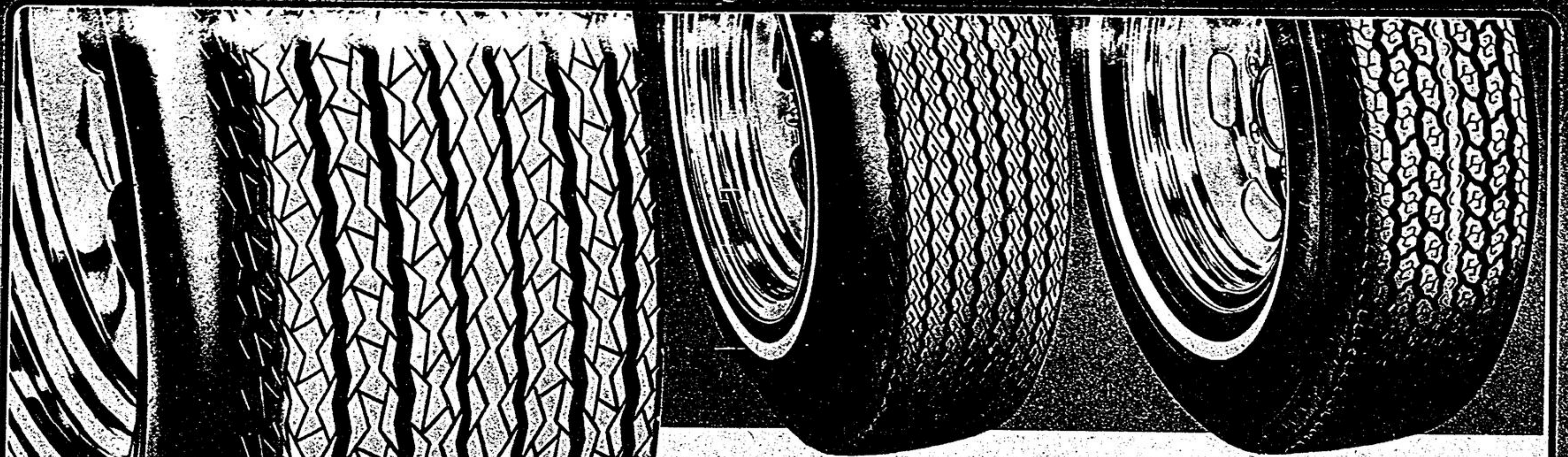


How's this for great tire value:

Our regular low passenger-tire prices include 5-year road hazard insurance



Turnpike 2+2 Wide-Track

2760

A78-13
Whitewall

After discount for cash payment* **26²²** Each

Built with 2 Glass Belts for comfort & performance

Glass-belted tires with 2 body plies of Polyester have equipped millions of cars over the last decade. This same basic construction is found in our Turnpike Wide-Track. It's a structure that has proven itself by consistently providing better steering and traction plus added mileage. Years of engineering development ensure that this 2+2 meets the requirements of modern driving.

25,000-Mile (40,225 km) Performance Rated

Turnpike 2+2 Wide-Track			
Whitewall Size	One Tire Price	After discount for cash*	
600-12#	27.95	26.55	
A78-13	27.60	26.22	
B78-13	29.45	27.98	
C78-13	30.30	28.78	
C78-14	29.75	28.26	
E78-14	31.95	30.35	
E70-14#	34.70	32.96	
F78-14	33.30	31.63	
F70-14	35.95	34.15	
G78-14	34.95	33.20	
G70-14	37.90	36.00	
H78-14	37.50	35.62	
560-15	27.30	25.93	
F78-15	34.70	32.96	
G78-15	35.45	33.68	
G70-15	38.80	36.86	
H78-15	37.70	35.81	

#Different tread than shown

Safety 99 Polyester		
Whitewall Size	One Tire Price	After discount for cash*
A78-13	26.50	25.17
B78-13	27.75	26.36
C78-14	28.95	27.50
E78-14	31.40	29.83
F78-14	32.90	31.25
G78-14	34.40	32.68
560-15#	27.25	25.89
G78-15	34.90	33.15
H78-15	36.80	34.96
J78-15#	40.95	38.90

#Different tread than shown

4-Ply Polyester

Safety 99 is a modern-design, 78-series tire built for stability and performance. 4 Polyester plies reinforce a deep-siped, 7-rib tread for cushioned ride and extra-long mileage. 20,000-Mile (32,180 km) Performance Rated.

Steel-Belted Radial

The Supreme is a uniquely durable radial because it features 2 additional Nylon cap plies in most sizes to improve performance and control. 2 Steel belts reduce tread squirm for better mileage. A high-strength Polyester casing delivers a stable, smooth ride. 40,000-Mile (64,360 km) Performance Rated.

Supreme Steel-Belted Radial		
Whitewall Size	One Tire Price	2 or more each after discount*
155R-12#	42.95	37.00
165R-13#	44.95	38.90
BR78-13	46.45	40.33
DR78-14#	52.95	46.50
P205/70R-14 (DR70-14)	55.95	49.35
ER78-14	55.45	48.88
FR78-14	57.65	50.97
GR78-14	58.45	51.73
HR78-14	61.25	54.39
165R-15#	47.65	41.47
FR78-15	58.70	51.96
GR78-15	59.70	52.91
HR78-15	63.45	56.48
JR78-15#	65.95	58.85
LR78-15	69.65	62.37

#Different tread than shown

*5%

Discount for Cash Payment on Tires in lieu of Bonus Coupons

No Extra Charge for Installation

We will install our new passenger tires on most standard rims at no extra charge when you buy a Dill or Schrader valve at our regular price of \$1.00. We must install tire and valve together.



Turnpike Whippet II

Blackwall Size	One Tire Price	After discount for cash*
600-13	17.80	16.91
B78-13	19.90	18.90
C78-14	20.80	19.76
E78-14	21.50	20.42
F78-14	22.25	21.14
G78-14	23.60	22.42
560-15	20.25	19.24
F78-15	22.50	21.37
G78-15	23.95	22.75
600-16#	19.90	18.90

#Different tread than shown

Ride with Confidence on Nylon Whippet-II's

1780

600-13 Blackwall

After discount for cash* **16⁹¹** ea

The Whippet II, with its radial-like contours, is made of double-ply DuPont 66 Nylon cord that is 50% stronger than that used in regular 4-ply tires. This permits fast heat dissipation for cooler high-speed running and a cushion-smooth ride.

Your Light Truck Tire Centre



TORNADO is a go-anywhere performance tire specially designed for recreational vehicles. Polyester bias-ply body provides smooth, vibration-free ride. Raised outline white letters.

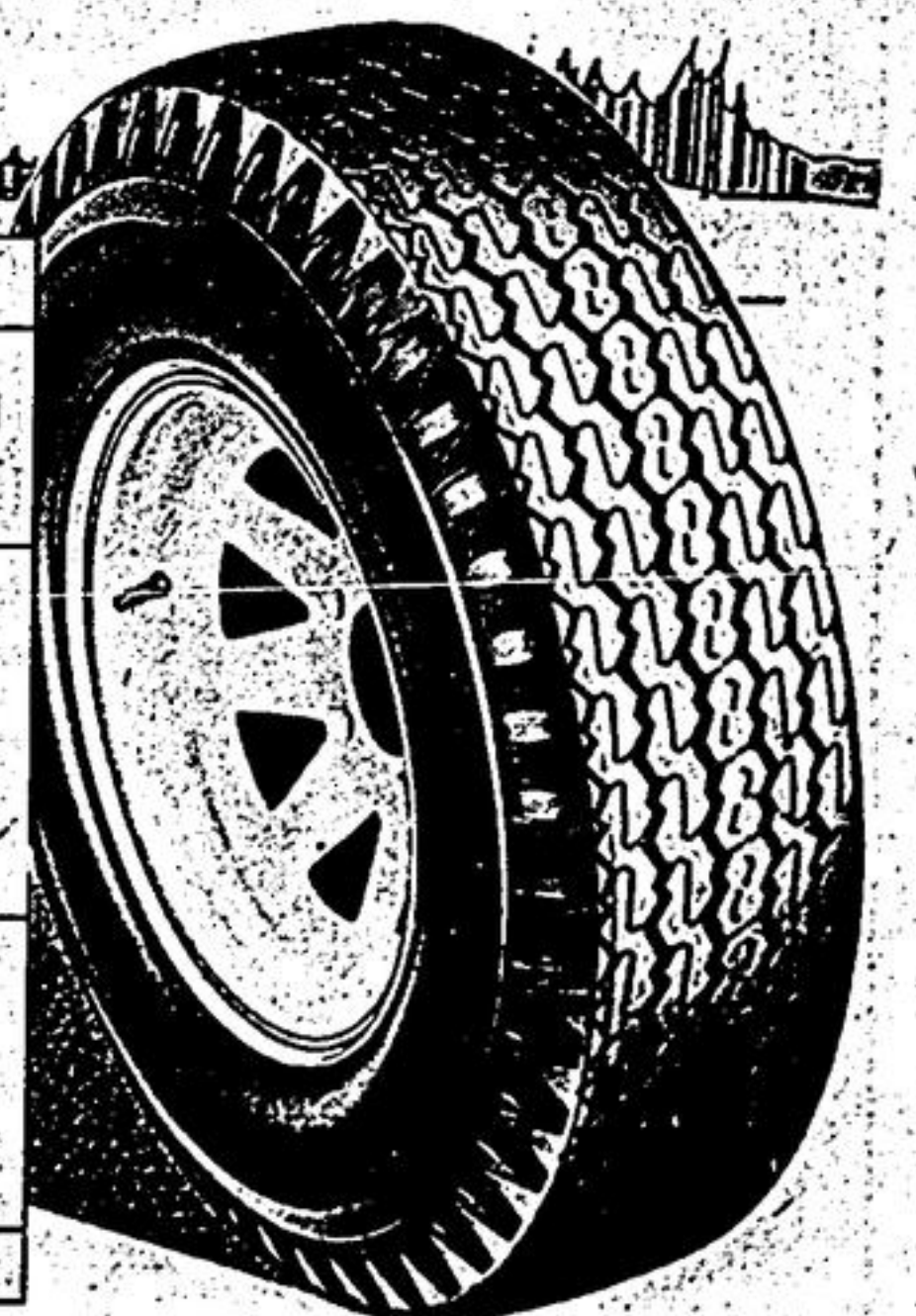
TORNADO for RVs				
Size (tubeless)	Ply rating & load range	One tire price	After discount for cash*	Road Hazard Protection
10-15LT	4B	67.75	64.36	3.39
11-15LT	6C	77.25	73.39	3.86

Optional 5-Year Road Hazard Protection available for truck tires

Master Highway is a modern, 5-rib tire with inter-locked elements to reduce noise and improve steering control. Constructed of heavy-denier DuPont 66 Nylon for durability and strength with high resistance to bruising. Deeply-grooved for added traction and long mileage. It's a dependable hard-working truck tire.

Master Highway				
Size (tubeless except as noted)	Ply rating & load range	One tire price	After discount for cash*	Road Hazard Protection
670-15	6C	41.95	39.85	2.10
700-15	6C	46.75	44.41	2.34
650-16	6C	44.40	42.18	2.22
800-16.5	8D	57.90	55.00	2.90
875-16.5#	8D	66.90	63.55	3.35
950-16.5	8D	69.95	66.45	3.50
670-15•	6C	38.95	37.00	1.95
700-15•	6C	43.75	41.56	2.19
650-16•	6C	41.40	39.33	2.07
700-16•	6C	45.40	43.13	2.27
750-16•	8D	58.30	55.38	2.92

#Tread not shown •Tube-type



STOUFFVILLE

360 Main St. West

Phone 640-5800

OPEN MONDAY TO FRIDAY 9 a.m. to 9 p.m.



ASSOCIATE STORE