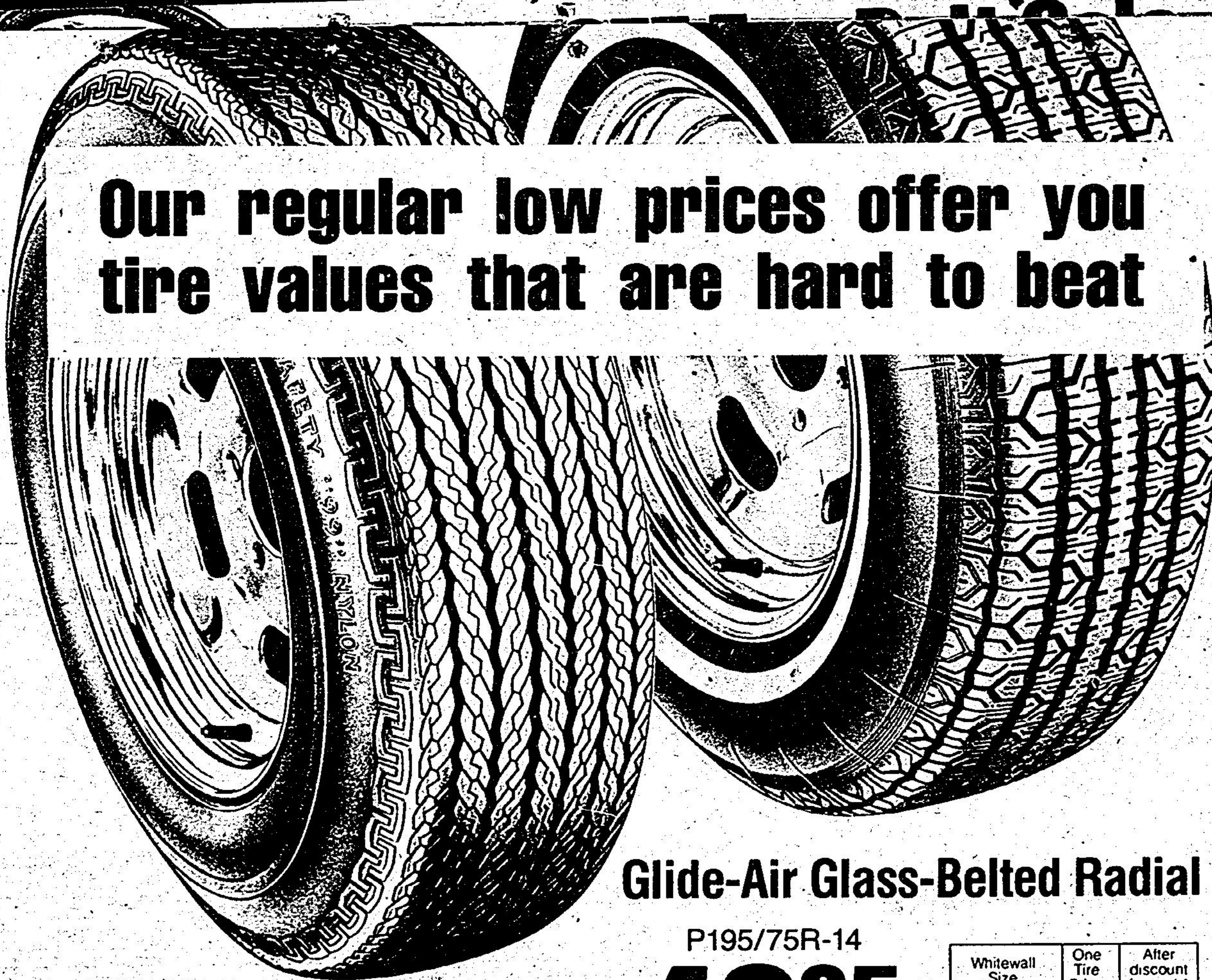


Our regular low prices offer you tire values that are hard to beat



Safety 99 All-Service Nylon

A78-13 Blackwall

2250

Each

After discount
for cash* ... **2137** Each

A high-quality replacement tire constructed with DuPont 66 Nylon—the very same that goes into racing car, truck, aircraft and even giant earth-mover tires. Nylon's great strength permits a construction that dissipates destructive heat at highway speeds. Over the years, millions of Canadians have equipped their cars with All-Service Nylons. Continual modernization and construction improvements ensure it's kept current with automotive design changes. 18,000-Mile (28,962 km) Performance Rated except 10,000-mile rated 520-10.

Blackwall Size	One Tire Price	After discount for cash*
520-10#†	16.60	15.77
550-12#†	18.40	17.48
600-12#†	20.80	19.76
P-155/80D-13#	23.95	22.75
A78-13	22.50	21.37
B78-13	23.75	22.56
C78-13	24.90	23.65
B78-14	25.25	23.99
C78-14	25.75	24.46
D78-14	25.95	24.65
E78-14	26.90	25.55
F78-14	28.40	26.98
G78-14	29.90	28.40
H78-14	32.30	30.68
560-15#	25.25	23.99
C78-15	26.70	25.36
F78-15	28.95	27.50
G78-15	30.40	28.88
H78-15	32.30	30.68
L78-15#	38.90	36.95

Whitewall in most sizes at \$2.00 more
 *Whitewall # Tread not shown
 †Double-ply (4-ply rating) for compact car compatibility

Glide-Air Glass-Belted Radial

P195/75R-14

4295

Each

After discount
for cash* ... **4080** Each

The Glide-Air is a super radial... even at this low, low price! Designed to meet the requirements of the new, energy-conserving cars, it's built with 2 lighter, yet extremely strong, glass belts atop a polyester casing. This combination contributes to a significant reduction in weight for better performance and increased gas mileage. And it loses none of the excellent characteristics which the modern radial is noted for — long mileage, great wet and dry traction, sure-footed stops and starts plus good cornering and steering. And the lighter construction offers the added bonus of a more comfortable ride than is possible with steel radials.

32,000-MILE
(51,488 km)
Performance Rated

Whitewall Size	One Tire Price	After discount for cash*
P155/80R-12# (155R-12)	34.45	32.73
155R-13#	36.45	34.63
165R-13#	37.45	35.58
AR78-13#	34.45	32.73
P185/75R-13 (BR78-13)	35.95	34.15
175R-13#	38.95	37.00
165R-14#	45.95	43.65
P185/75R-14 (CR78-14)	41.95	39.85
P195/75R-14 (ER78-14)	42.95	40.80
P205/75R-14 (FR78-14)	45.95	43.65
P215/75R-14 (GR78-14)	47.45	45.08
165R-15#	42.95	40.80
P205/75R-15 (FR78-15)	46.95	44.60
P215/75R-15 (GR78-15)	47.95	45.55
P225/75R-15 (HR78-15)	51.45	48.88

Different tread than shown

***5% Discount**
for cash payment on tires
in lieu of Bonus Coupons

All our Passenger
Car Tires are 5-Year
Road-Hazard Insured

No Extra Charge for Installation of
our new passenger tires on most
standard rims when you buy a Dill
or Schrader valve at our regular
price of \$1.00. We must install tire
and valve together.

Check the full benefit terms
of our replacement warranty
in your local store.

 **CANADIAN TIRE 19**