



**Nothing runs  
like a Deere**

• QUALITY..SELECTION..SERVICE



**CARL PAINTER**  
SERVICE  
MANAGER



Service  
is the other half  
of a great product

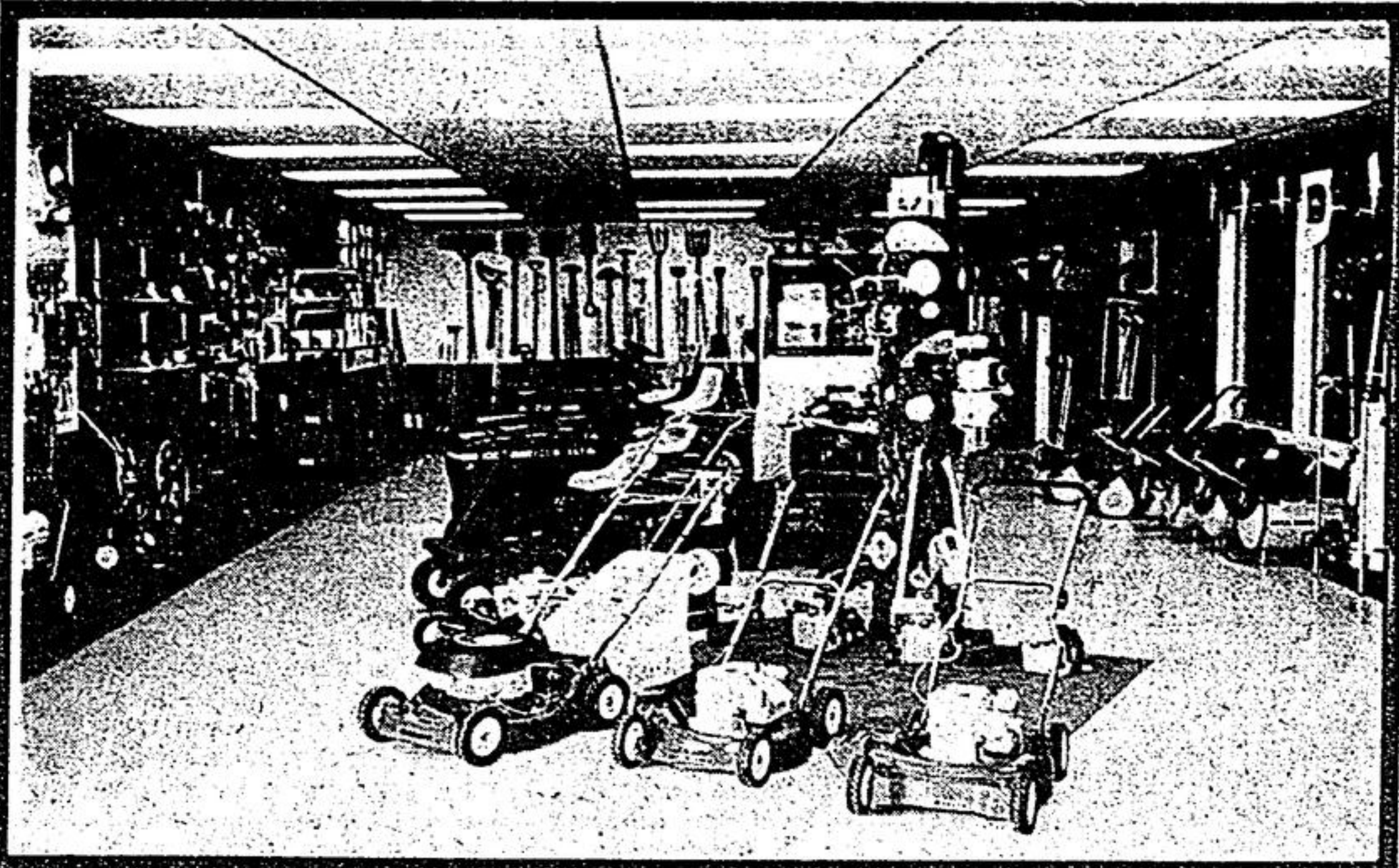
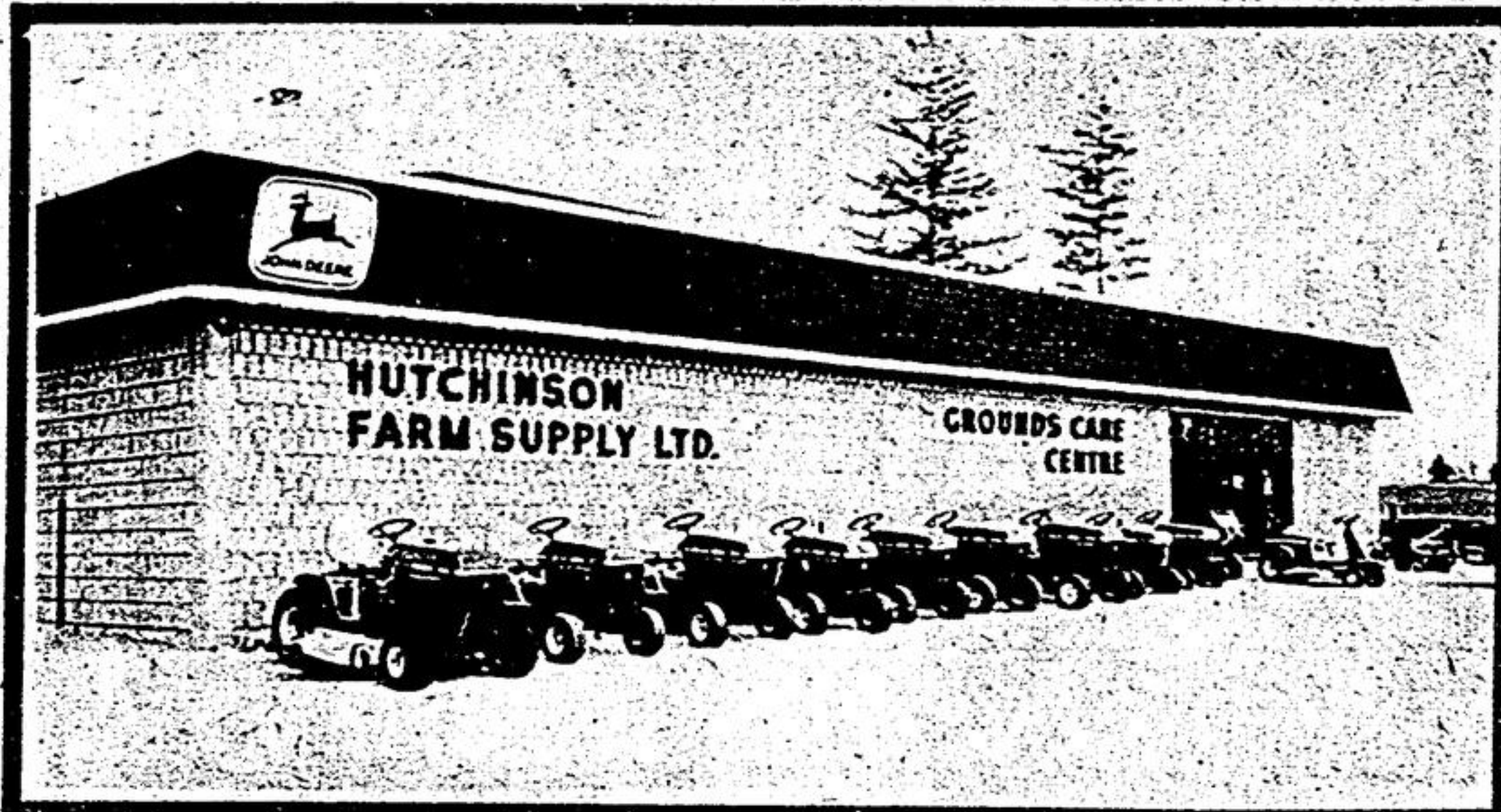
**The  
captain  
of our  
service  
team**



**SHAUN GARRETT**  
Service Specialist  
on our  
Mobile Service  
Unit

**Service  
Specialist**

Service  
is the other half  
of a great product

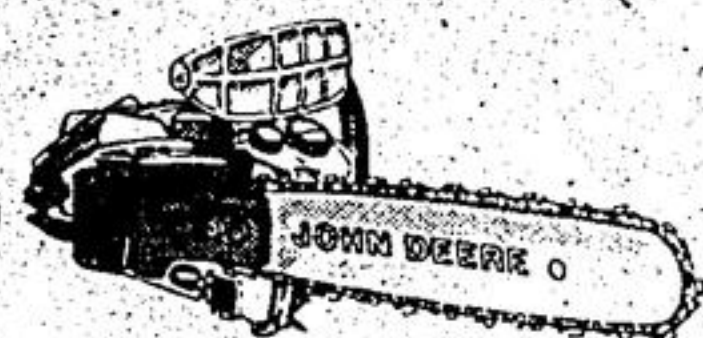


**DOWN TO EARTH  
VALUES**



**Chain Saws**

Five models, 30 to 70 cc's. Sprocket-nose guidebar, 12 to 27 inches. Automatic oiler. Counterbalanced crankshaft. Most models also have an isolated engine for more operating comfort. See us for details.

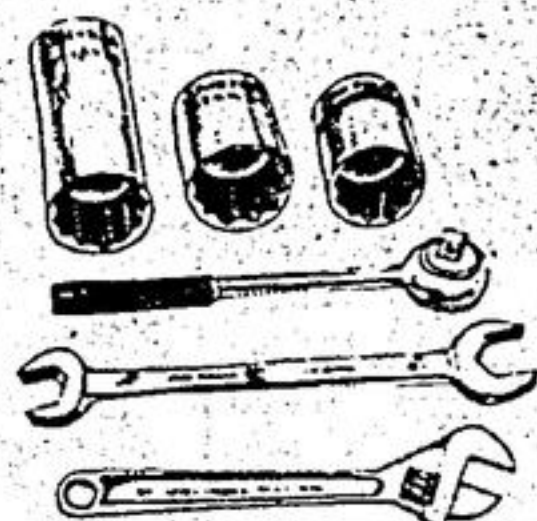


**High-Pressure Washers**

Electric current and cold water are all you need to put a no-scrub cleaning machine to work: Five models with nozzle pressure from 500 to 1,100 psi.



**Top-Quality  
Mechanic's  
Tools**



**Work Gloves**

We have ladies' garden gloves in a variety of styles and colors. For men, we have work gloves in cotton, jersey, and leather styles. Lightweight but durable.



**Cut quick and  
easy with a  
nylon-line  
trimmer**



**Electric  
Nylon-Line  
Trimmer**

The John Deere 65E Trimmer is ideal for keeping smaller lawns trimmed. It weighs only 3 1/4 pounds, yet trims a 10-inch path.



**Quality and  
Selection**

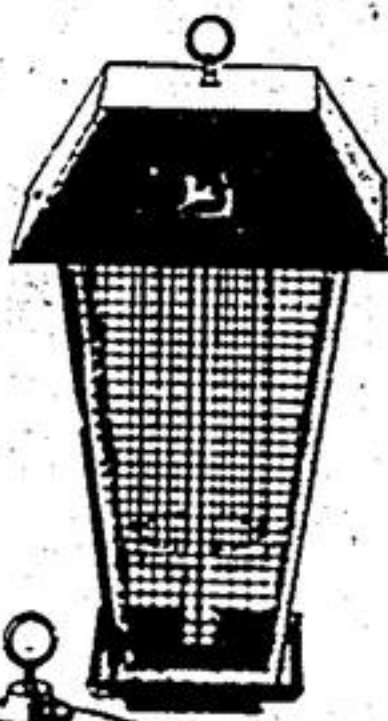


**Lawn and  
Garden  
Tools**

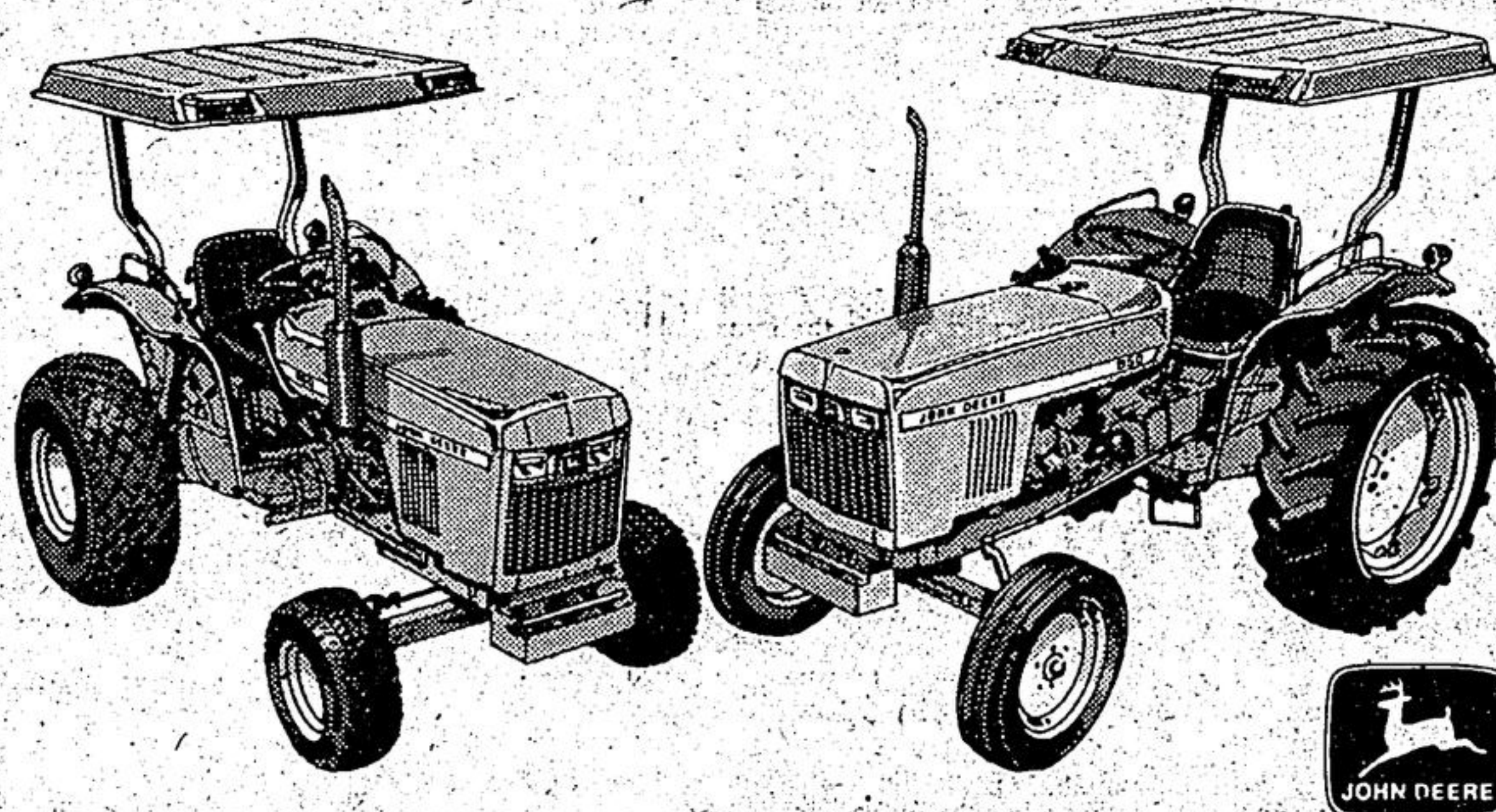
We have a wide selection of top-quality tools. Rakes, hoes and shovels. Trowels, transplanters, pruners and loppers. Stop in soon.

**New  
Insect Killers**

Rid outdoor areas of flying insects. Three models — 25, 45 and 145 watts — draw insects with ultraviolet light. electrically charged self-cleaning grid kills them quickly.

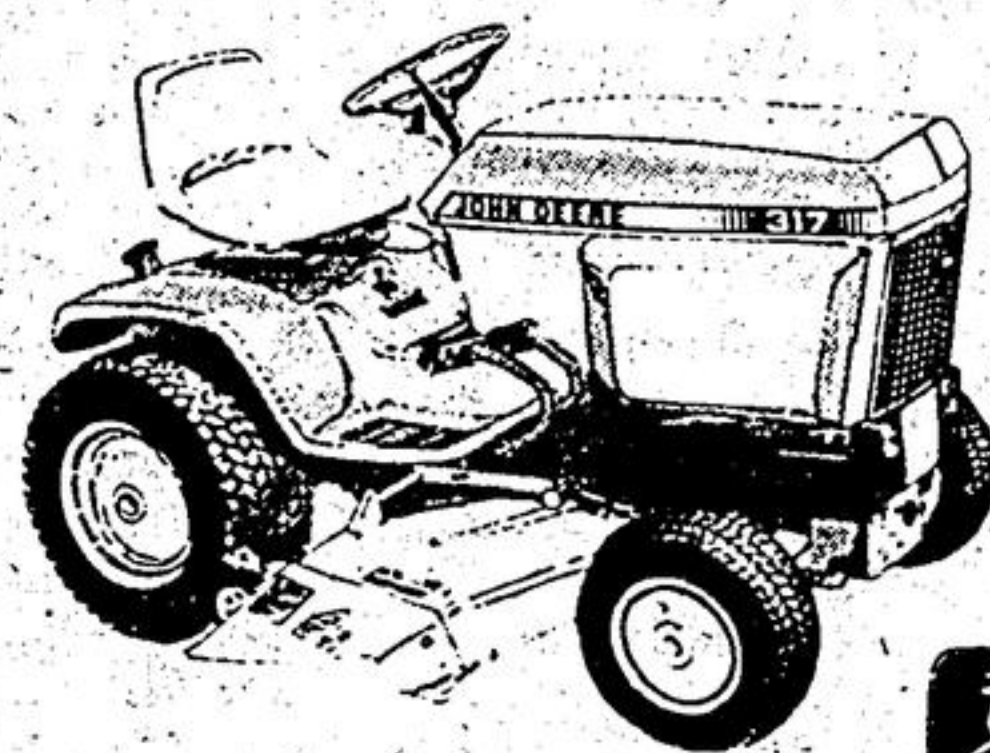


**JOHN DEERE  
'LITTLE-BIG' TRACTORS**



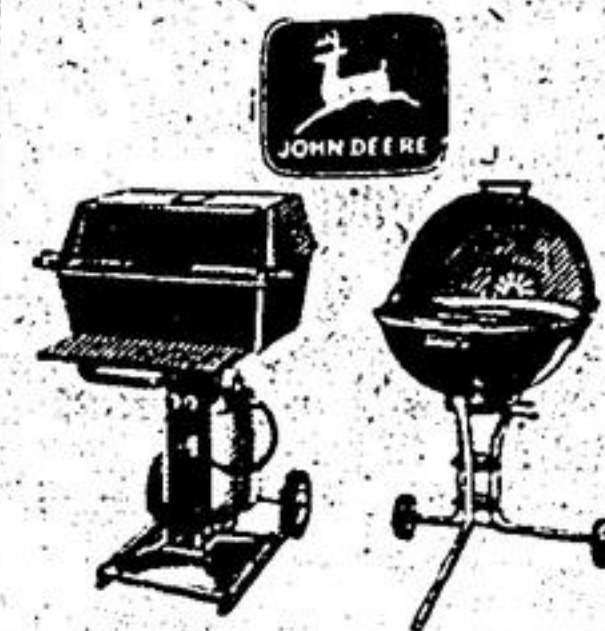
**Small-size tractors with big-tractor features**

- Two power sizes — 850 with 22-PTO-hp diesel engine; 950 with 27-PTO-hp diesel engine
- 8-speed "Hi-Lo" transmission
- Differential lock
- Category 1 3-point hitch
- Rear 540-rpm PTO
- Hand- and foot-operated throttle controls
- Adjustable wheel tread



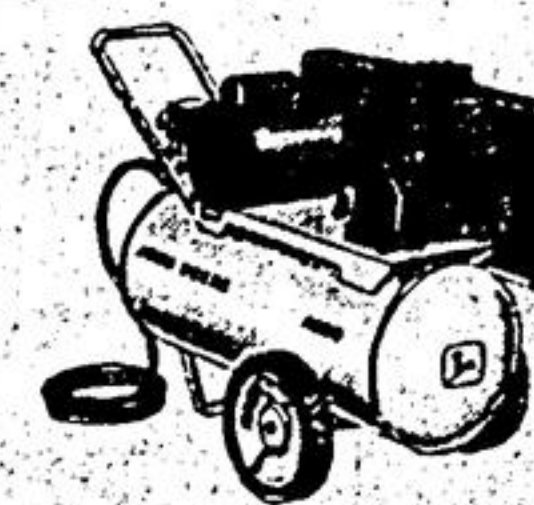
**Lawn and Garden  
Tractors**

John Deere offers a choice of 7 power sizes — from 10 to 19.9 horsepower — and transmissions with hydrostatic or variable-speed drive. Triple-safety starting guards against accidental starts. Color-coded controls are clustered for easy use. Rustproof fiberglass hood, padded seat, roomy operator's area. Wide range of implements available.



**Barbecue  
Grills**

John Deere Grills are available in gas, charcoal and electric models. All feature quality construction for easy cooking, long service life. We also carry a variety of grill accessories.



**Air  
Compressors**

Put air power to work with a John Deere Compressor — 1/2 to 2 hp. Spray paint, operate air tools, inflate tires... compressed air provides the muscle.

**HUTCHINSON FARM SUPPLY LTD.**