

Bantams lead

STOUFFVILLE — In their first game of their semi-final play-off against Huntsville the Bantams B's had to work very hard to pull off a 5-3 victory.

With Kevin Barry recuperating from the previous Saturdays hammering at the Napanee arena John Carrick acquitted himself well in goal.

Norm McKenzie collected both first period goals for Stouffville with assists coming from Dave Mahaffey and Barry Greenshields at 5:09 and 0:16. Huntsville managed to get one into the net with only eight seconds left in the period.

Seven minutes into the second period, Huntsville evened the score and it was left to Kevin Bartley, with an assist from Barry Greenshields, to pull the Bantams ahead. With

Huntsville putting on terrific pressure it was Brian Todd who gave them breathing space, when he picked up a loose puck and hammered it in to give Stouffville a comfortable 4-2 lead.

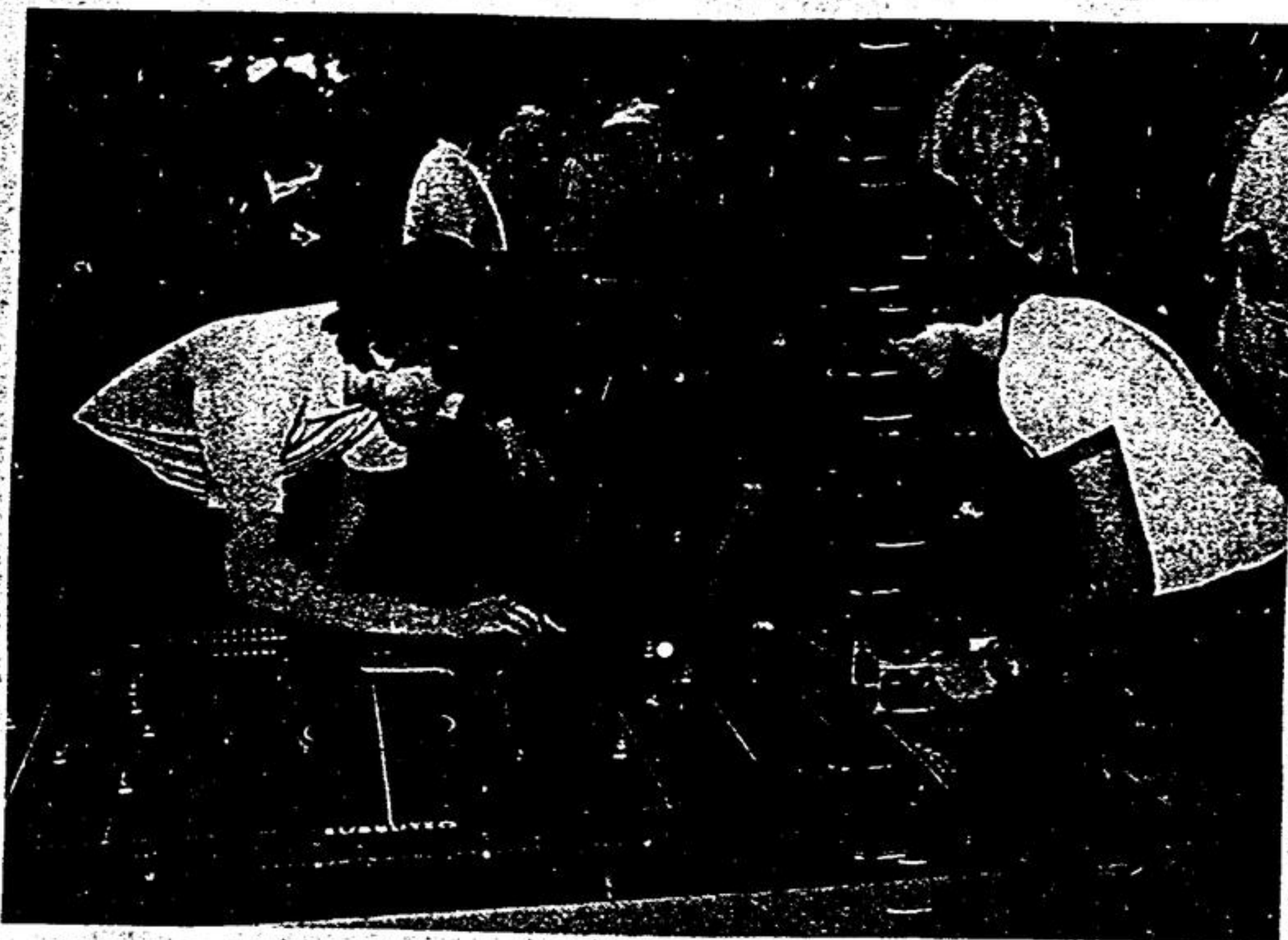
Huntsville got their third, halfway through the final period, when John Carrick ricocheted a hard shot high into the air and instead of letting it go tried to get it the second time. In doing so the puck got away and it was all the Huntsville centre needed.

With such a slim lead and the Huntsville front line hitting hard towards the Stouffville net it took the home team a couple of minutes to get itself together. Then they were off, Bartley, Greenshields and McKenzie, went on a raid and stayed in the visitors end zone banging away at the puck for three and a half minutes

until, at last, Norm McKenzie on assist from Barry Greenshields managed to find an opening. The final score of 5-3 was a pretty fair reflection on the abilities of both teams.

The game was noted for its lack of penalties; there were only two apiece, and the way in which Stouffville's front line fell back nicely in defence. Stouffville played very cohesive hockey throughout the game and they should not have too much trouble in their three away games.

Saturday night saw the Bantams play the second of their semi-final games at Huntsville, where they came away a 6-3 winner. Having proved they can win against this team, away from home, they should have no trouble taking this round in three straight games.



Canadian Subbuteo Soccer Champion, Frederico Serrafiero (left) on his way to a 4-0 victory, against Cleve Jones (right) from Richmond Hill, Ont. while the referee looks on closely.

Girls hockey league

STOUFFVILLE — L and M girls sprung the surprise of the week-end play-offs when they pulverized Sales Barn 6-1. This brings both teams to a first place tie with six points apiece.

Julie Thompson and Kathy McBeth headed the scoring for L and M with Bonnie Hollingsworth and Mary Albright collecting singles. Julie Thompson gave three assists and Cheryl Hardy supplied one.

It was left to Janet Dunkeld to stave off a shut-out for Sales Barn with assists coming from Jannette Cooper and Lori Bartley.

I.G.A. scrambled to third place in the standings, giving them a total of four points, when they squeaked by Credit Union 2-1.

It was not until the second period that Barb White put IGA on the board with Karen Brown getting number two just one minute later.

Lyn Ferris from Marie Underwood saved Credit Union from a shut out.

Junior House League standings are as follows: Gornaley 4 points Lions 2 points, Kinsmen and Lauralea tie in third place with one point each.

Atoms ahead 3-2

STOUFFVILLE — Leading 2-1 Stouffville Atom A's hosted Port Perry for game three on Wednesday 14.

Despite a first period in which the Stouffville team bombarded the Port Perry net from almost every angle neither team managed to get on the board.

A second period goal by David Fockler from David Collins was offset by the visitors collecting two. The home team tied the score in the third with a goal by Brian Lewis from David Collins, and for the second time in the series went into overtime.

With only two minutes left of overtime play Port Perry surprised everyone by collecting not one but two goals, giving them their first win of the series.

Stouffville returned to Port Perry on the sixteenth and Port Perry again won in overtime, this time 3-2. This tied the series at 2-2.

On Monday 19th Stouffville hosted game number five and came up with a real first class total team effort.

Six minutes into the first period Jeff Conway shook the Port Perry defence with a shot from

the face-off and went on to collect his second goal of the game in the second period on a very pretty pass from Kevin Ferris.

It was Brian Lewis who salted the game away when he picked up a pass from Graydon Card and Jeff Conway.

Chris Harper earned a well deserved shut-out for the Stouffville team.

Sixth game of the series is at Port Perry on Monday 26 March and if necessary a seventh game at Stouffville on Wednesday March 28.

The Atoms would greatly appreciate everyone's support for these two crucial games.

Table soccer championships

STOUFFVILLE — On Saturday, March 24 and for the second year in a row, Upper Canada Mall, Newmarket will host the regional qualifying round of the Canadian Subbuteo Table Soccer Championships. The competition is open to all ages and sixteen year old Mark Crayden of Keswick, the current champion, will be back to defend his local title.

For those who have not seen Subbuteo Table Soccer played, it is a unique 'Flick to Kick' game, for two players, that requires considerable skills. Each player has a team of eleven miniature players which are flicked around the table, controlling the ball. Many players put in hours of practice and have formed their own leagues, with friends and neighbours. If you want your team to play in your favourite colours, there are over 300 to choose from.

Subbuteo commands a great deal of respect from soccer coaches who frequently use it as a coaching and teaching aid. As such it is endorsed and recommended by the Ontario Youth Soccer Association.

It was a Subbuteo sponsored Aurora select mosquito team, led by local soccer enthusiast Alfons Rubens, who toured Scotland, England and Sweden so successfully last summer. A Newmarket team also played in the Subbuteo colours last year.

Competition is open to anyone who wishes to display their table soccer skills. To enter all you have to do is contact George Daghish at 457-7111 or 826-6911 prior to tournament day.

SPRING CLEARANCE

MATTRESS OR BOX SPRING

WITH HEAVY GAUGE POSTURE COILS BUILT FOR FIRMNESS AND EXTRA LAYERS OF FELT FOR GENUINE SLEEPING COMFORT. MULTILAYERED.

54" Posture Sleep	78.77
60" Queen Size Posture Sleep	159.95 118.77
39" Mattress	59.99 38.77
Rug Roller Frames	24.95 17.77

BEVERLY CHIROPRACTIC - POSTURE THERAPY
POSTURE SLEEP - CHIROGUARD ORTHOPEDIC
SPECIAL SIZE MATTRESSES MADE TO ORDER

54" Mattress and Box Spring	99.95
-----------------------------	-------

AURORA MATTRESS
234 Yonge St. S., Aurora
727-1600

Budget Terms CHARGEX VISA master charge

GORDON SINCLAIR

MR. NICE GUY STRIKES AGAIN!

AND AGAIN... LET'S BE PERSONAL 11:45 AM MONDAY-FRIDAY

AND AGAIN... NEWS AND COMMENT 11:50 AM TUESDAY-FRIDAY

AND AGAIN... SHOW BUSINESS 5:45 PM MONDAY-FRIDAY

You'll love every minute of it!
CFRB 1010
THE PEOPLE, PEOPLE LISTEN TO

★ All-Star Radio ★

Bowling scores

Monday men's

STOUFFVILLE — In the Monday night Mens Bowling league Roger Todd lead the field with a high triple of 850. Other scores were: Gary Dube 803, Glen Jackson 789, Bill Dart 781, Geo Brodie 757.

Bob Tran 754, Red Bond 745, Robert Gleave 744, Gord Hardie 741, Bob Morley 740, Barry Irving 727, Doug Gilbert 703, Byron Turk 701, Bill Cargill 700, Barry Zeller 689, Murray McLaughlin

664, Ross Cairo 674, Bob Bondy 673, Art Grove 659, John Vanderlight 653, Grant Drewery 652.

Tuesday

STOUFFVILLE — In the Tuesday afternoon Legion Ladies game Lois Bartley scattered the pins for a high triple of 717 and single games of 272, 236 and 209. Other scores were: Gaye Lehman 687; 298, 227, Aldine Sinclair 662; 273, 201, Marion Grove 649; 239, 215, Betty Turner 647; 270, 202, Nancy Lehman 621; 238, 204, Gladys Clarkson 611; 241, 200, Rose Fronse 609; 243, Karen Foote 609; 258, Scores over 200 were: Ella Nichols 243, Pat Appleton 240, Miltzi Aida 228, Florence Ball 224.

Wednesday

STOUFFVILLE — In the Wednesday night 9 p.m. Mixed Bowling league Jose Sage led the scores with a high triple of 700 and singles games of 242 and 278. Other scores were: Elroy Clodd 663; 283, 233, Dale Knabb 638; 223, 215, 200, Larry Crozier 622; 285, Singles over 200 were: Joan Corcoran 240, 209, Doug Clark 200, Don Taber 221, Dee Bundy 222, Paul Kent 220, John Wilson 207, 211, Jacquie Hare 207, 209, Bruce Johnson 222, Pat Barker 200, 244.

1979 TAX CREDIT

TOWN OF WHITCHURCH-STOUFFVILLE

Application forms for a municipal tax credit are available at the TOWN OFFICE, 19 CIVIC AVENUE, STOUFFVILLE, or phone 640-1900 or 895-2423 for more information.

THIS MAY BE AVAILABLE TO YOU
MAXIMUM CREDIT OF \$100 FOR EDUCATIONAL PURPOSES
You must meet all of the following 5 requirements to qualify

IF

- You own and occupy your home
- You are 70 years of age or over
- Are in receipt of old age security benefits and monthly guaranteed income supplement
- You have continuously been the owner and occupier of your residential real property in the Town for the past 5 years
- You do not have an income in excess of \$3,830 if you are a single person or as a married couple your total income is not in excess of \$7,660.

IF YOU DO QUALIFY.....
YOU SHOULD IMMEDIATELY COME IN TO THE TOWN OFFICE TO COMPLETE YOUR APPLICATION FORM FOR 1979 TAX CREDIT, AS THEY MUST BE FILED BY APRIL 20, 1979.

J. E. Foskett, Treasurer.

LAST WEEK

PIONEER POOLS
14th ANNUAL PRE-SEASON POOL SALE

WHY BUY NOW?
EARLY INSTALLATION - BEAT 1979 PRICE INCREASE!
A RELIABLE SIGN OF SUMMER FOR 14 YEARS

CALL FOR MORE INFORMATION 297 1551

The Town of Markham
PUBLIC MEETING
WEDNESDAY, MARCH 28, 1979, 8:00 P.M.
DICKSONS HILL PUBLIC SCHOOL, DICKSONS HILL

A Public Meeting will be held by the Planning Committee of the Town of Markham to consider a zoning by-law for the Hamlet of Dicksons Hill.

The Hamlet of Dicksons Hill is located east of Highway 48 in the vicinity of 19th Avenue and comprises parts of Lots 28, 29, 30 and 31 in Concessions 7 and 8.

On December 15, 1978 the Minister of Housing amended Ontario Regulation 104/72 (Minister's Order for the Airport) with Ontario Regulations 961/78, which removed a substantial portion of the hamlet area from the Minister's Order (Airport) area. These lands have thus reverted to municipal zoning control. The Council of the Corporation of the Town of Markham is accordingly considering a zoning by-law for the hamlet area.

The purpose of the by-law is to establish zoning categories suitable for the existing development in the hamlet and to apply appropriate development standards.

You are invited to attend the meeting and to state your support of or objection to the proposed by-law. Should you be unable to attend, written submissions will be received up to the time of the meeting.

Copies of the proposed zoning by-law may be examined in the office of the Planning Department.

T. Gove, Chairman, Planning Committee. T.M. Januszewski, Planning Director.

GARBAGE DISPOSAL IS A MAJOR PROBLEM TODAY

DON'T BE PART OF THE PROBLEM...

MAKE RECYCLING A WAY OF LIFE

AND BE PART OF THE SOLUTION!

BRING YOUR NEWSPAPERS, MAGAZINES, CATALOGUES, PAPER BAGS, CARDBOARD (including boxes from Corn Flakes, Kleenex, etc.); EGG CARTONS; POP CANS, KITCHEN CANS (labels removed, cleaned, and flattened); CLEAN GLASS JARS & BOTTLES; SCRAP METAL & APPLIANCES.

TO THE WHITCHURCH-STOUFFVILLE RECYCLING DEPOT
PARK STREET SOUTH (OPPOSITE SWIMMING POOL)

WE ARE OPEN - THURSDAYS 10:00 a.m. to 12:00 noon
SATURDAYS 9:30 a.m. to 12:30 p.m.

FOR INFORMATION - HELEN GARRETT 640-1737
JOYCE NAILER 640-4479
JEAN BELISLE 640-4870

The Depot is operated by volunteers, and the monies realized from the sale of materials are turned back into community projects. To date contributions have been made to Minor League Sports, new Town Band, Block Parents' Ass'n., Santa Claus Parade, free public skating, purchase of tennis nets for Stouffville, Rescue Equipment for Fire Department.

WHITCHURCH-STOUFFVILLE RECYCLING DEPOT

Member of the Whitchurch-Stouffville Chamber of Commerce