



This dog's a back-seat driver

When Don Piche and Anne Maddocks of RR 3, Claremont, snowmobile into Stouffville to pick up their week's supply of groceries, "Jasmond", a

1½ year old English Sheepdog always tags along. Jasmond rides in a 'pup' sled, a kind of 4-legged back-seat driver.

Jim Thomas

Town man — big winner

Cash over car in Lions' draw

STOUFFVILLE — Ted Tindall, Lloyd Avenue, Stouffville, was presented with a problem, Saturday; a nice problem. He had the difficult task of choosing between a 1979 Pontiac Acadian hatch-back of \$3,500 in cash. It didn't take him long. He selected the money and

will put it in the bank. However, as a sign of appreciation, he gave a sizeable sum back — to the Stouffville Lions Club, sponsors of the event. The buffet, dance and lucky draws were held at Rolling Hills, Bethesda, with several

hundred people in attendance. Gary Hoy, Stuart Street, Stouffville, was in charge. An amusing sidelight to the show was ticket No. 507, held by Mrs. Danika Ovcacic of Toronto. She received it from her friend, Mrs. Nina Campbell of Stouffville, who purchased two. Mrs. Campbell kept No. 508 for herself and passed the other on to Mrs. Ovcacic. To the latter's complete surprise, she won a seven day trip for two to The Bahamas.

Ironically, Mr. and Mrs. Ovcacic had just purchased a new automobile. Because of the expense involved, they had decided to forego a holiday this year.

Other prize recipients were: Jim Spang, Stouffville, a lady's diamond ring; Stan Durward, Sunderland, a micro-wave oven and Mrs. Allan Connor, R.R. 1, Stouffville, an automatic dishwasher.

Safeguard crossing

WHITCHURCH — The last 'unguarded' level crossing in the rural area of Whitchurch-Stouffville, will soon be protected by automatic warning lights.

The C.N.R. has approved the installation of "flashers" on St. John's Sideroad, between concessions 5 and 6. The Town's net share of this expense will be \$2,925.00.

The total road appropriation for 1979 is \$490,000 of which, \$245,000 will be returned in subsidy. However, this does not mean Whitchurch-Stouffville will spend this much, Mayor Eldred King told The Tribune. No capital works projects are planned this year. To be completed, however, is reconstruction of Commercial Street, George Street, Duchess Street and Park Street, all in the former village of Stouffville.

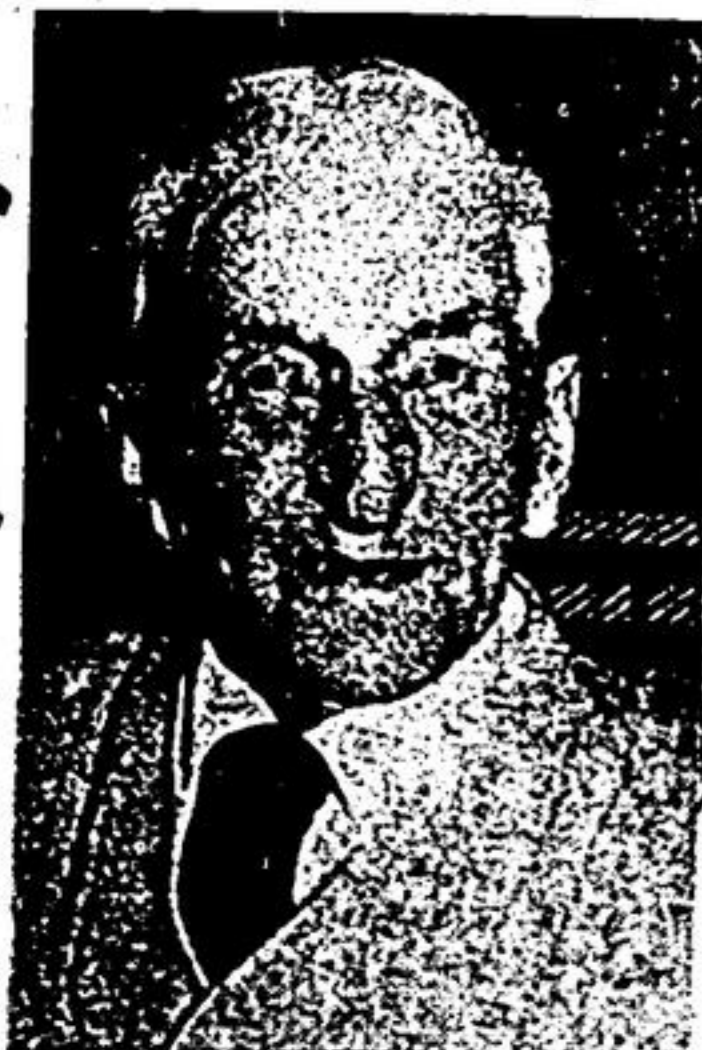
The intersection at St. John's Sideroad and the 6th concession was improved in '78, with the Town to absorb \$30,000 of this cost less subsidy.

Driver dies

A tragic single-car accident, Tuesday, took the life of one of this area's most talented musicians.

Ed Wideman, 30, of Richmond Hill and formerly of Dickson's Hill, died when his westbound car skidded off the Stouffville-Gormley Road and rolled over several times.

Erle Reesor, 29, of RR 2, Markham, a passenger in the vehicle, was seriously injured.



FRANK WAGG

Snowmobiler Larry Van Dyke

American champ

WHITCHURCH — Twenty-two year old Larry Van Dyke, Bethesda Road, RR 4, Stouffville, is the toast of snowmobilers everywhere this week, following a 1st and 2nd place finish in the "world series" of snowmobile racing, Feb. 23-25 at Fulton, New York.

Larry became the first Canadian ever, to sweep the 40 Mod class, competing against top drivers from all

across the United States and Canada. He was a runner-up in the 250 Mod division.

Piloting an Arctic Cat but switching engines, Larry flashed around the half-mile oval track at blinding speed. The crowd attending the finals, Sunday, was estimated at 5,000.

Racing conditions were anything but good. The track was extremely rough, a witness to the feat told The Tribune.

Given much of the credit for Larry's weekend success were 'super' mechanics, John Bolender and Bill Rising. Among other things, they were kept busy shifting motors back and forth from the single chassis.

On hand for the trophy presentations were Larry's girlfriend, Katrina Hannan; his sister, Bonnie and her boyfriend, Jim Saltys.

Christian School

STOUFFVILLE — A bid to establish a Christian Day School in Stouffville, introduced in 1978, is not "dead"; very much alive in fact.

In response to concerns expressed by some members of the Stouffville Missionary Church, a steering committee has been formed to study the feasibility of such a project.

Members are - Harold Knights (chairman); Ruth Herbert, George Timbers, Bob Stover and the church's associate pastor, Jim Clubine.

Once sufficient information is obtained, the committee will report back to the congregation on its findings.

The Tribune

VOL. 91 NO. 44

WHITCHURCH-STOUFFVILLE, FEBRUARY 28, 1979

20 CENTS

16 PAGES

New town plaza

Supermarket plan attractive to Board

STOUFFVILLE — A two-man delegation of developers dangled a supermarket "carrot" in front of planners' noses, last week, and while members didn't exactly 'bite', some admitted it appeared rather tempting.

Builder Frank D'Amico and town merchant, Graydon Card informed the Board of their desire to establish a small plaza on the north side of Main Street West at Palmwood Gate. It would, they said, include a new Home Hardware Store, a bank, several small stores and—a supermarket.

Mr. D'Amico said Dominion Stores Ltd., had completed a market survey in town and were definitely interested in locating at this site. He told of receiving letters of interest from Dominion as well as Loblaw's, Safeway and the Bank of Montreal. He produced them at the meeting.

Mr. Card said he had been prepared to "go it alone" on the hardware store, but the expanded proposal had come to the fore since he last addressed the Board.

Councillor Becky Wedley spoke of Dominion's popularity, with many people, herself included, going out of the community to shop there. She pointed out, however, that developers of the proposed Harding Gate Plaza in Stouffville's east end, had indicated the town's population was not sufficient to support an additional food store at this time.

Mayor Eldred King said approval of the Harding Gate supermarket had been denied for that very reason. "After turning down one application, I don't see how, in good faith, we could turn around and accept another".

Councillor Bill McNalley

stressed the importance of treating all developers fairly, but noted the Board was dealing with a different location. The Card property is close to a built-up residential area.

Councillor Bill Kamps said he'd rather see a project "with a fighting chance" go ahead,

rather than one that, in his opinion, had been doomed with "the kiss of death" since its inception.

Mayor King suggested that if the west end plaza was allowed to proceed, the Harding Gate project would undoubtedly be scrapped.

"Bury the hatchet"

STOUFFVILLE — Wishing to preserve political harmony in Council, Becky Wedley has sidestepped further confrontation with Mayor Eldred King over a story published in The Tribune issue of Feb. 8.

In it, councillor Wedley took exception to the mayor's description of water quality at the Hwy. 48 sanitary landfill site and was quoted as saying he (the mayor) could "lull

residents of Whitchurch-Stouffville into a false sense of security".

Mayor King called for a retraction.

The Ward 2 member said her "Letter to the Editor" used in the form of a news story, was in no way meant to be an attack on the mayor. Her only purpose in contacting the paper was to put forward her own views, she explained.

Councillor Wedley provided Mayor King with the original copy of her letter and invited him to discuss its content further, but in private.

In the past, she said, she and the mayor had enjoyed what she described as "a good working relationship" and she wished that spirit of co-operation to continue.

May widen 7th Line

LEMONVILLE — Residents opposed to the widening of the 7th Concession of Whitchurch-Stouffville, from a point opposite the entrance to the Lemonville Community Centre to the Bloomington Road, a distance of about 2,300 feet, will be heard at an Engineering Committee meeting, March 13.

The hearing is set for 2 p.m., at the Engineering Building, west side of Woodbine Avenue.

Re-construction through this area failed to hold up due to inadequate drainage, Mayor Eldred King told The Tribune. The region wants to widen the 7th to a maximum of 100 feet at this location only and improve the road bed, he explained. Four property owners are directly affected.

Road design plans may be seen at the office of Ronald Gee, Woodbine Avenue, phone 384-8731.

"Growing"

STOUFFVILLE — We're growing — not rapidly but gradually.

Population figures released this week by deputy-clerk Pat Muir show Whitchurch-Stouffville at 13,219 at the end of 1978 as compared to 13,044, the year previous. This is a gain of 175.

Stouffville alone stands at 5,966, up 84 from '77. Whitchurch has increased by 91.

Put squeeze on Library

STOUFFVILLE — The Whitchurch-Stouffville Library Board isn't happy with financial restraints placed upon it by Council, but it's "prepared to get by," chairperson Marie Adams told The Tribune.

The proposed budget for '79 is \$104,222, up from last year's figure of \$99,080. The total includes a '78 deficit of \$4,200; not that the Board over-spent, said Mrs. Adams, but the Town failed to come through with funds that had been promised.

Marie Adams said that while services would suffer (particularly if cutbacks are continued), there was nothing to be gained by thinking negatively.

Transport driver

Averts tragedy

RINGWOOD — The quick actions of a 19 year old transport driver, may have averted a tragedy at the Ringwood intersection of Hwys. 47 and 48, Monday.

Kevin Bartlett of North Bay rammed his tractor-trailer into deep snow and rolled it on its side, after a leak in the line caused the

truck's brakes to fail as he approached the lights. No one was injured.

Commercial Sand and Gravel Co., provided a front-end loader to remove lumber, valued at \$36,000 from the trailer before the unit could be righted. Traffic was reduced to a single lane until the debris was cleared.



The last unprotected level crossing in Whitchurch-Stouffville, will soon have warning lights installed. The C.N.R. and Town Council have

approved the erection of 'flashers' on St. John's Sideroad, between Concessions 5 and 6. Jim Thomas.