

SPORTS

THE WIRING MART

ONE STOP SHOP FOR ALL YOUR WIRING SUPPLIES
LET US HELP YOU —
DO IT YOURSELF & SAVE

BUILDING A COTTAGE • CHANGING YOUR SERVICE • UPGRADING YOUR WIRING? LET US HELP YOU DO IT YOURSELF AND SAVE

SERVICE ENTRANCE
HOUSE POWER PANELS
100 amp - 200 amp combination fuse or breaker
SAVE 40%
off m.p. tag, list or F.P.E. As indicated on Square 0



BASEBOARD HEATERS
NAME BRAND 240V PERMANENT TYPE

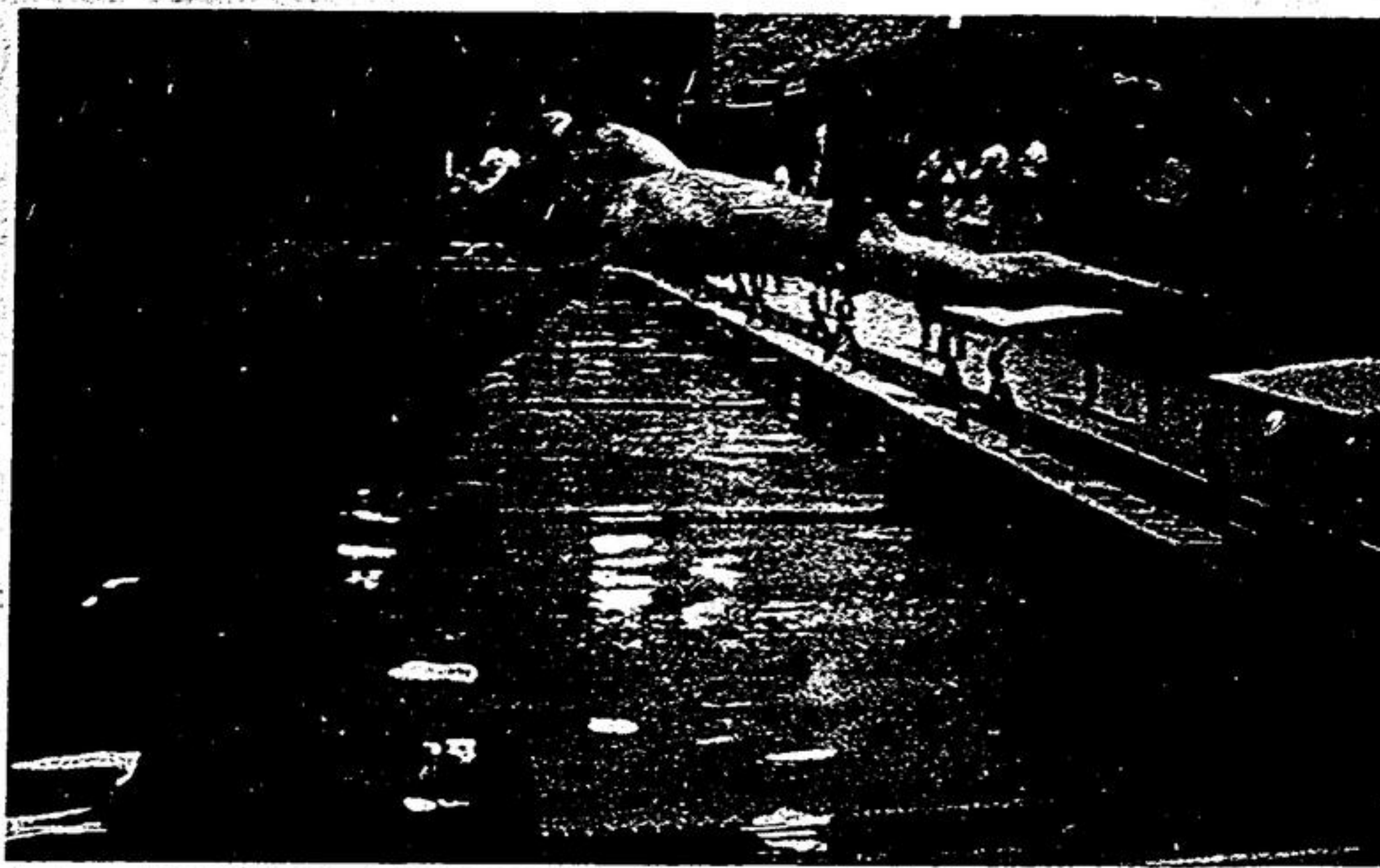
| WATTS | LENGTH | MFG. LIST | SALE |
|-------------------------|--------|-----------|-------|
| 500W | 28" | 27.00 | 15.55 |
| 750W | 38" | 31.25 | 18.75 |
| 1000W | 48" | 37.25 | 22.35 |
| 1250W | 58" | 44.50 | 26.70 |
| 1500W | 72" | 49.25 | 29.55 |
| 1750W | 84" | 58.25 | 34.95 |
| 2000W | 96" | 62.50 | 37.50 |
| 2250W | 96" | 65.50 | 39.50 |
| 2500W | 108" | 70.00 | 42.00 |
| UNITED MOUNTED CONTROLS | | 12.00 | 8.25 |
| WALL MOUNTED CONTROLS | | 9.00 | 6.49 |

"HURRY WHILE SUPPLIES LAST"

53 BERTRAND AVE. SCARBOROUGH
(2 N. of Eglinton, E. of Warden)
Open daily to 6; Thurs. & Fri. to 8 Sat. 9-1

752-7360

WE STOCK MASTS - CABLE CONDUIT - METER SOCKETS AND FITTINGS
Layout and Design Service Available



A flying start to the 1500 metres event at Markham's Centennial Pool.

Clippers go down fighting

STOUFFVILLE — 'Oh dear what can the matter be?' may well be the lament of Clippers supporters after the debacle against Port Hope in Saturday night's game at the arena.

To be a Clipper's supporter is to experience the full range of emotions, from utter despair to "How could I ever doubt them". Unfortunately there is, as yet, no emotion available for a 12-3 defeat other than suicide.

To be fair to the Clippers there were extenuating circumstances surrounding Saturday night's game. First of all Spang and Schell were absent from the Clippers line-up, and for some unaccountable reason Bert Wensink sat out most of the game as a spectator. With this

valuable trio missing the result was almost a foregone conclusion.

This is not to say that the Clippers did not try hard, in fact they played their hearts out. However, without the dash and sparkle of the customary line up and no repeat performance of the 'Bowmanville game' it was too much to ask the Clippers to shine against

such formidable opposition. The Port Hope team rank third in the league standings at present.

Strangely enough the first period was very even. Glen Gibson with an assist from Ted Waite put the Clippers on the board first. Port Hope replied with two goals at 6:44 and 12:39. Both teams had an equal number of shots on

goal during the first period at 14 apiece.

It was Bruce Rugelis from Ted Waite who evened the score early in the second, but try as they may the Clippers just could not seem to get going.

At the end of the second period Port Hope had collected five more goals and outshot the Clippers 18 to 8.

Against such an onslaught the Clippers simply had no reply and at the final buzzer the Port Hope boys had tallied another five goals giving them an impressive 12-3 victory.

both alpine and cross country events, against times put up by the experts. Awards were made on the basis of bronze, silver and gold medals. This was not so much a competition as a test of stamina and ability.

This event has had a steady following over the last ten years and this year was no exception.

There were over fifty entrants for the down-hill event. Fastest time of the day went to Chris Lehman who collected a gold with a time of 33.8 seconds.

Fastest in the ladies section was Daryl Bernhart with a time of 38.6 seconds. Daryl collected a silver.

Swim Double win

STOUFFVILLE — Markham Aquatic Club hosted 317 swimmers from 18 different clubs at their first Annual Invitational meet held over three days last weekend.

Commonwealth Games triple gold medal winner Carol Kilmpel equaled her Commonwealth time in the 100 metre free-style.

Brian Mercer of Stouffville, who already holds his club's records for the 400 freestyle and 200 individual medley, set a new record in both these events.

The one event in which Brian was expected to do well, the 1,500 metre, was rather a disappointment for him as he could do no better than a seventh place.

STOUFFVILLE — Stouffville's OMHA Peewee 'A' team collected honor and glory in their weekend at the Haliburton arena. Not only did they come away with the 'Consolation Cup' but were awarded the 'Founders Trophy' as well, for the team showing the most sportsmanlike qualities on and off the ice.

The team played a total of four games. The first was on Friday against a very powerful team from Amherst, New York. The last this one 6-0.

In their second game, against Oshawa, they walked away with a 7-1 win. Lee Brown was

outstanding in this game and gave the Stouffville team four of their seven goals. Rick English collected 2 and Mike Anderson one.

Their third game on Sunday morning was just a little tougher. However, Mike Feasby, Lee Brown and Stephen Small scored one goal apiece and the game ended in a 3-1 win.

For the Sunday night game against Oak Ridges the arena was packed tight. Despite having two men with a bad dose of flu they made no mistake in taking the game 6-4. Stephen Small and Rick English scored 2 goals apiece and Vince Jennings, Lee Brown, Luigi Tesoro and Mike Anderson collected singles.

Molstar Ski

STOUFFVILLE — With more than 3.2 million Canadians enjoying the nation's second most popular participation sport annually, you'd think skiing has been part of our natural heritage since the Vikings first arrived. But skiing in Canada is just 100 years' old and still growing.

There are approximately 3.2 million skiers in Canada, 1.4 of whom enjoy alpine skiing and 1.8 million are cross-country skiers.

To celebrate National Ski Week, January 20 to 28, Dagmar ski resort held a 'Molstar' event, in which the public could measure themselves, in

Unfortunately the future of this very popular event is in jeopardy, due to government legislation forbidding brewery sponsorship of events open to minors.

The Stouffville and District Snowmobile Club will be giving 100 per cent support to the annual Whipper Watson 'Snowarama' event being held at Bradford on Sunday, February 4th.

The club wishes to extend an invitation to anyone wishing to attend. Entry forms may be obtained from the club secretary Debbie May at 640-5880.

Charity

STOUFFVILLE — The Stouffville and District Snowmobile Club will be giving 100 per cent support to the annual Whipper Watson 'Snowarama' event being held at Bradford on Sunday, February 4th.

The club wishes to extend an invitation to anyone wishing to attend. Entry forms may be obtained from the club secretary Debbie May at 640-5880.

MAGNAVOX .. SKLAR .. BRAEMORE .. ROXTON .. DAVELERVILLE .. KINGKOIL .. DIELCRAFT .. SONY .. GERRARD .. KITCHEN-AIDE .. HOTPOINT

CHARGEX • OPEN 9 to 9 Thurs. & Fri. Sat. 9 to 6 P.M.

VISA

BRICE'S FURNITURE BARN

WOODBINE AVENUE NORTH
(416)478-4175 QUEENSVILLE ONTARIO TOR. 363-1954

BRICE'S GUARANTEED LOWEST PRICES
If you can ever find a lower priced new item elsewhere, please let us know and we will gladly lower our price below any competition.



JANUARY SUPER SALE

•• COME ON UP! •• HEATS ON!!

COOK 'N' CLEAN CENTRE THE RANGE THAT WASHES DISHES

Simplicity

A McGraw-Edison Product

EXCLUSIVE - 2 YR. REPLACEMENT WARRANTY ON ALL PARTS

WASHER-DRYER
\$995.00

DISHWASHER PORTABLE SANI-WASH 6 PUSH BUTTONS
\$339

DELUXE WASHER \$399.
DRYER \$269.

DISHWASHER BUILT-IN BLACK FRONT
\$299.

SUPER-TWIN COMPACT
\$235.

WRINGER-WASHER PUMP-TIMER FILTER GYRATOR
\$235.

FREEZERS ALL SIZES SPECIAL PRICES!

MICROWAVE OVEN
\$459.00
• FULL SIZE OVEN
• SIMPLE CONTROL



Camping on Wheels
February 1 to 4
Exhibition Place, Toronto

- Trailers, motor homes, truck campers, tent trailers, fold-down campers, van conversions, fifth wheels, tow vehicles, four-wheel drives and accessories.
- All vehicles on display built in Canada to CSA Z-240 standards.


Weekdays: Noon to 10:30 pm
Saturday: 10:30 am to 10:30 pm
Sunday: 1:00 pm to 7:00 pm
Adult: \$3.00 • Junior (5-15): \$1.00
Senior Citizens: \$1.00

Canada's largest all-Canadian recreational vehicle show

Produced in aid of Conservation by Canadian National Sportsmen's Shows




TEAR INTO A TOUGH WINTER SNOW WITH A GRAVELY!



A Gravelly likes to tear into the deepest winter snow! Just attach the hefty SnowDozer blade and move out. Our exclusive drive won't let you down, because there aren't any belts to slip, come loose or break. And come spring, your Gravelly will still be rarin' to go on the tough garden and lawn work you have to do.

It's the choice of the pros! It can be yours, too. Come in for a demonstration.



GRAVELLY

Choice of the Pros.

OTTO RICHTER & SONS EQUIPMENT
12 HERITAGE RD.
UNIT 5 MARKHAM
294-1407

CHARGEX VISA

WITH US... SERVICE IS NO SIDELINE