

Bears drop road games

The Neil Patrick Polar Bears had a rough time on the road last week, losing two straight games, to Oshawa and Peterborough.

The first game saw the Stouffville Novice team put up a good fight against Oshawa coming back from a three goal deficit, only to lose the game 4-3 in the final minutes.

Mike Ferguson was the strength on the Bears side, collecting three points on a goal and two assists. Other goals were scored by James Hume and Craig Mucci. Assists went to James Hume, Brad May, Mark Goldring and Kirk Smythe.

The following game in Peterborough saw the Bears simply out-hustled

and out-muscled by their opponents. Peterborough walked off with an easy 5-1 victory, with Stouffville's lone goal coming from Kirk Smythe with only 49 seconds left in the game.

In an exhibition game on Monday, the Bears returned home to play host to Port Perry, and managed a 1-1 tie.

Kirk Smythe banged in the tying goal for Stouffville with 2:49 remaining in the game. The Polar Bears play this Friday night in Newmarket then travel to Ajax on Saturday. On Monday, Dec. 4 the Bears are home against Pickering, at 7 p.m.

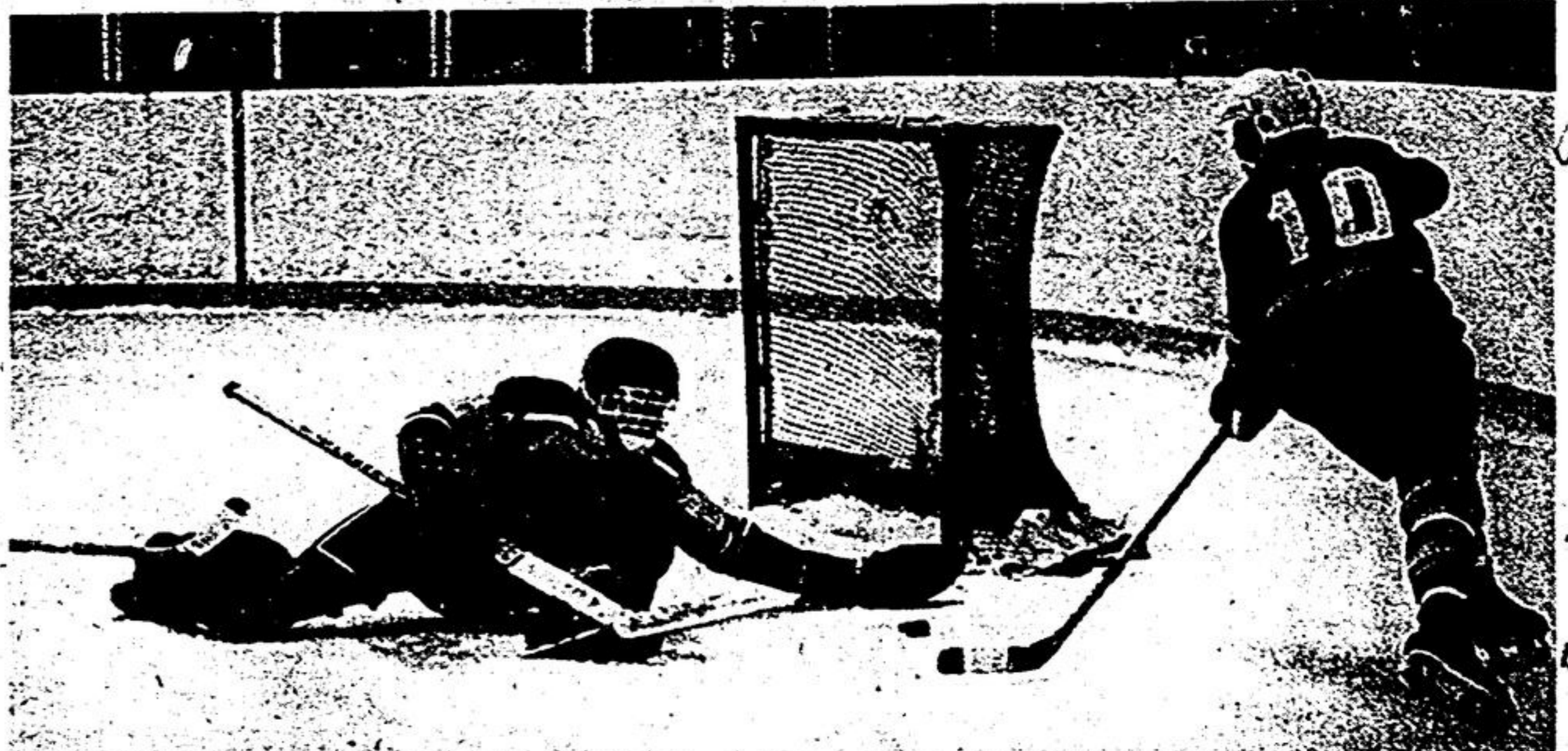
Skate-a-thon big success

Last Saturday's Stouffville skate-a-thon was, for the first time in years, a resounding success.

According to one of the organizers, John Hutchinson, there were approximately 260 boys and 50 girl players who participated, "that's almost 100 per cent turnout on a team basis," he said.

This year marked the first time the skate was categorized into teams and times, and John said the system "worked super, there's no question we'll use it again next year."

There is no estimate of the amount of money to be collected yet.



The Stouffville mens hockey league, which plays in Scarborough, is providing some good hockey unknown to most people. Above is action between the top two teams, Pro Hardware and Steerburger, played last Sunday. The Pro team won 6-0 and no. Number 10 for Steerburger did not score on the play.

Bantam team wins

The Stouffville Bantam A's soundly defeated their Oshawa opponents last Sunday 6-2.

However, it was all scorers were: Scott Frisby with two; Norm McKenzie, Bryan Todd, Kevin Bartley and Barry Smith with singles.

The Souses were led by Dave Conell's 12 points. Don Beachamp was close behind with 10, followed by Jim Hill, nine; Randy Barber, seven; Eric Button and Jim Fletcher with four points each.

Souses edge by Baseline Bullets

Undisputed first place is what the Stouffville Souses achieved after their 46-42 victory over the Baseline Bullets in men's basketball play last week.

The Bullets, last year's champions, led the game most of the way but the Souses came on in the last few minutes and pulled out the win.

This Monday the Souses take on the Markham Jesters.



Canadian Imperial Bank of Commerce announces the election of W. Dorey McKeough as a Director of the Bank.

Mr. McKeough is Chairman of McKeough Sons Company Limited, Chatham, Ontario. He is a former Treasurer of Ontario who served for 15 years in the Ontario Legislature as a member for Chatham-Kent Riding. For 11 years Mr. McKeough was a member of the cabinet and held several important portfolios.

The Cooking Experience

FRENCH CUISINE CLASSES

The Perfect Christmas Gift For The Man Or Woman Of Your Choice

- No Previous Experience Required
- Basic Techniques Taught
- Complete Menu Prepared Each Class

For More Information Call
Barbara Forsythe
Stouffville 640-6192
Evenings & Weekends



Who says an annuity has to have a fixed premium?

Ask your Sun Life agent to explain the features of the new Flexible Premium Retirement Annuity, such as adjustable premiums, interest and annuity rate guarantees, waiver of premium upon disability, and current tax deductions into the bargain

HEINZ DAUES
C.L.U.
INSURANCE
AGENCY LTD.
924-6674
SunLife OF CANADA

Clippers prepare

The Stouffville Clippers, idle all last week, are preparing for an important two game series with Uxbridge.

The first game against Uxbridge takes place this Saturday, Dec. 2 in Stouffville at 8 p.m. The Clippers then play in Uxbridge on Tuesday, Dec. 5.

Games in Stouffville needed League seeks recognition

By KEITH BOLENDER

One of the best kept secrets of this hockey season has been the fact that Stouffville is involved in a highly successful men's hockey league.

However, the organizers of the league

are trying desperately to make themselves known. The problem is, although almost all of the players come from Stouffville, they play out of Centre Ice Arena in Scarborough on Sunday mornings 9 to 11 a.m. As Eric Scaife,

president of the first year league, noted the location was not one of choice. "We definitely wanted to play in Stouffville, but there just wasn't any ice time available. We are planning to apply for the 1979 season. It's rough not

getting the exposure in town, because I know the people here will support us once they see the brand of hockey we play."

What Eric was referring to was that the league plays non-contact hockey, one has to play the puck and not the man. The result is clean, very fast hockey with an abundance of scoring chances and few penalties. It makes for exciting hockey, and Eric is banking on that to make the league a success.

In fact, Eric claimed the strength of the league has been how well the players have given their support.

"We've had very little trouble so far, the players all enjoy being involved and, despite the time and location at least 95 per cent come out each week."

STOUFFVILLE MONUMENT WORKS LTD.

We carry in stock, at all times a large selection of beautiful designs crafted in Granite, Marble or Bronze for your choice. Satisfaction guaranteed. Monuments erected in all cemeteries. Cemetery lettering and renovations. Our of respect and understanding, we refrain from untimely solicitations. When time and circumstances are convenient will you please consult us.

APPOINTMENTS OR COURTESY CAR BY REQUEST

113 MAIN ST. WEST STOUFFVILLE	PHONE (416) 640-3643	POST OFFICE BOX NO. 235
----------------------------------	-------------------------	----------------------------

THE PRO'S CHOICE

Worn by more pro's than any other make.

CCM Super Tacks. This is the skate consistently chosen by the pro's over all others! Features you won't find in any other skate include the famous Tack last for premier fit, exclusive CCM ballistic nylon uppers, Pro-Fort toe, molded surlyn sole, unique "L" pads for tighter ankle fit. With CCM Prolite or Tuuk blade.

Super Tacks **\$135.95**
Junior Super Tacks **\$85.95**

Mustang, the CCM skate with features of the higher priced sets, yet priced way down. Built on the famous Tack last for outstanding fit and comfort. Special nylon uppers for strength and durability. Pro-Fit surlyn sole and many other CCM features. The proven Nylite blade is extra light, extra strong.

Senior Mustang **\$64.95**
Junior Mustang **\$44.95**

TACK NYLON \$119.95

BONUS - buy either hockey set and CCM will send you an official Team Canada equipment bag valued at \$24.00. Mail a copy of this ad along with your receipt of purchase from this dealer to CCM Bonus Offer, 2015 Lawrence Ave. W., Weston, Ontario M9N 1H6, postmarked no later than 7 days from date of advertisement. Allow 4 weeks for delivery.

\$5,000 Insurance

With every CCM helmet and wire mask combination purchased, you get at no extra charge \$5,000 insurance policy against accidental facial injury at no extra charge. Ask us all about it.

Helmet with wire mask is super light because CCM uses special wire and unique flip-up design. Special lower jaw padding. C.S.A. certified and C.A.H.A. approved.

CCM Helmet and wire mask only **\$35.95**

XMAS GIFT CERTIFICATES AVAILABLE!
••X-COUNTRY SKI PACKAGES••

FAWNS SPORT CENTRE

58 MAIN ST. W. STOUFFVILLE ••640-6322

ATTENTION: BEER BUFFS

Do you really know beer? Can you taste the quality that makes a good beer great? If so, read on. If not, turn the page.

Magnum 5.5 is a new, premium ale brewed for this festive season.

Magnum 5.5 celebrates the fine art of brewing and is available only in a limited quantity. So get it while it lasts.

You may want to share your good taste when entertaining friends during this holiday season. (But if you keep it to yourself, we understand.)

Magnum 5.5 is a premium priced, premium quality ale for people who really know their beer. If all beer tastes the same to you—save your money.

Magnum 5.5—there's no other beer like it.

Available in limited quantities at your Brewers' Retail outlets in 6, 12, 18 or 24 packs and cans.

MAGNUM 5.5 WHILE IT LASTS!