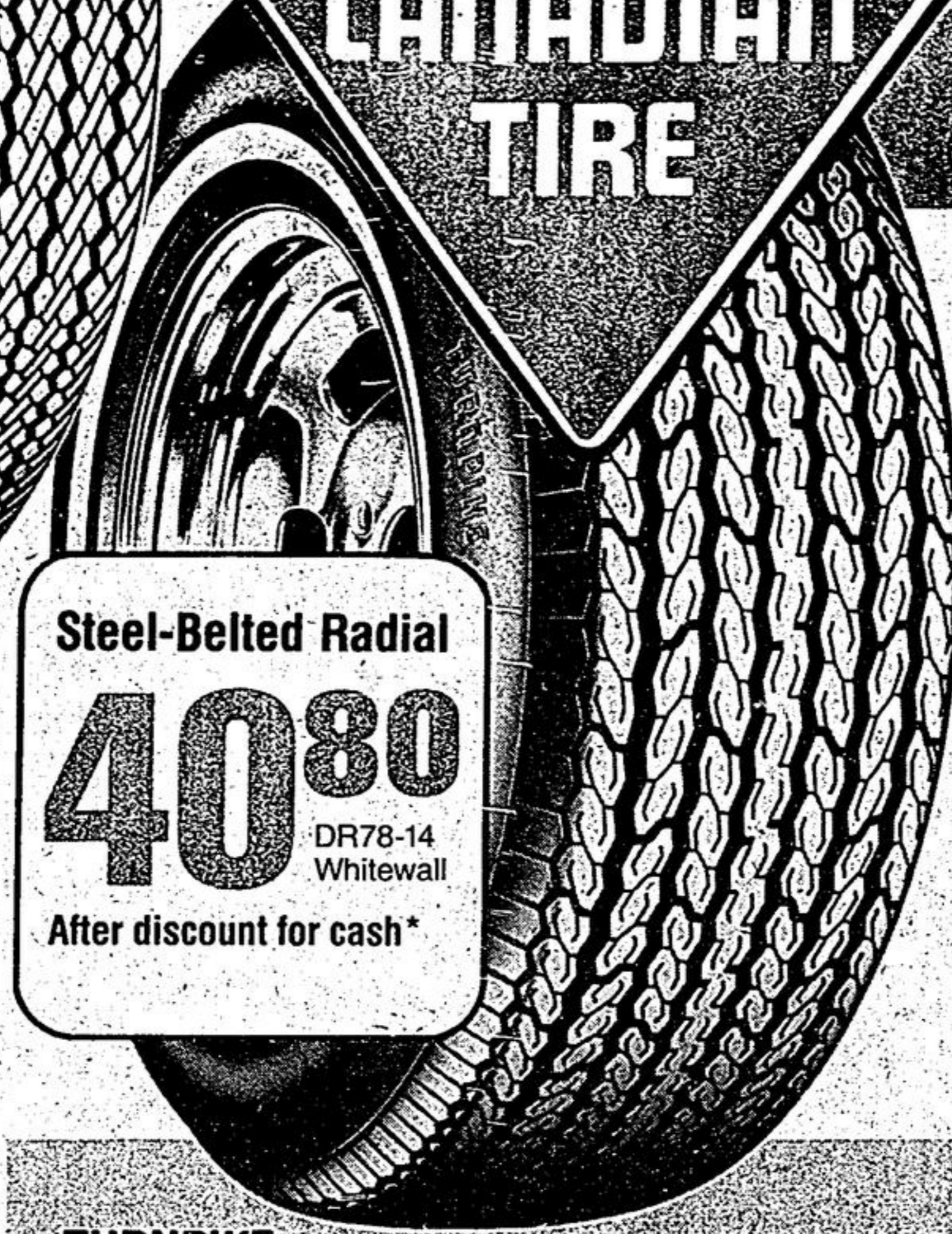


The Safety of NYLON

You can depend on a tire constructed of DuPont 66 Nylon. Nylon's unique resistance to heat fatigue ensures durability. That's why most aircraft, earthmover, truck and racing tires are reinforced with Nylon. You can depend on our everyday low tire prices too! Compare for yourself and see...



**CANADIAN
TIRE**



**Safety 99
All-Service
NYLON**

2161
A78-13

After discount for cash*
Whitewall available at \$2.00 extra

18,000-MILE Performance Rated
(except 520-10 which is 10,000-mile rated)

Since 1963, millions of Canadians have equipped their cars with All-Service Nylons, making them our most popular tire ever. Continual construction improvements and modernizing facelifts ensure the latest in tire technology is built right in. Constructed of DuPont 66 Nylon to beat highway heat.

E78-14 Whitewall
3268 Each
When you buy 2 or more after discount for cash*

4+2 Belt-O-Glass
30,000-MILE Performance Rated

Features 4 body plies (that's 2 more than most belted tires) of super tough DuPont 66 Nylon for exceptional strength and proven safety (see Nevada Desert Test results posted in store). 2 stabilizing Glass belts ensure long mileage, extra traction. In our experience the 4+2 is the toughest glass-belted passenger tire going.

Steel-Belted Radial
4080 DR78-14 Whitewall
After discount for cash*

TURNPIKE
Steel-Belted RADIAL
36,000-MILE Performance Rated

Built tough with two Steel belts to provide extra rigidity to the tread for sure-footed stops and starts plus increased mileage. Double plies of DuPont 66 Nylon give exceptional casing strength coupled with slim, med down sidewalls for excellent high-speed, high-heat durability. An outstanding tire value for the cost-conscious radial buyer.

Whitewall Size	One Tire Price	After discount for cash*
DR78-14	42.95	40.80
ER78-14	45.45	43.18
FR78-14	46.95	44.60
GR78-14	48.95	46.50
GR78-15	49.95	47.45
HR78-15	52.95	50.30

Our Passenger Tires carry 5-Year Road Hazard Insurance

***5% DISCOUNT**
for cash payment on tires in lieu of Bonus Coupons

No Extra Charge for installation of our new passenger tires on most standard rims when you buy a Dill or Schrader valve at our regular price of \$1.00. We must install new tire and valve together.

Performance Ratings, explained in detail in your Canadian Tire Store, represent mileages easily attained in normal service and are supplied as an aid to tire selection.

Whippet II Twin-Ply NYLON

NOT ILLUSTRATED

600-13 Blackwall

Made of double-ply DuPont 66 Nylon cord that is 50% stronger than used in regular 4-ply tires. This construction permits fast heat dissipation for cooler high-speed running with a soft, cushioned ride.

1610 Each
After discount for cash*

Safety 99 All-Service Nylon			Whippet II	
Blackwall Size	One Tire Price	After discount for cash*	One Tire Price	After discount for cash*
520-10† #	16.30	15.48	—	—
550-12† #	17.75	16.86	—	—
600-12† #	19.95	18.95	—	—
600-13	—	—	16.95	16.10
A78-13(600-13)	22.75	21.61	—	—
B78-13(650-13)	23.30	22.13	18.90	17.95
C78-13(700-13)	24.50	23.27	—	—
B78-14(645-14)	24.80	23.56	—	—
C78-14(695-14)	25.25	23.99	19.80	18.81
D78-14	25.50	24.22	—	—
E78-14(735-14)	25.95	24.65	20.40	19.38
F78-14(775-14)	27.70	26.31	20.95	19.90
G78-14(825-14)	29.30	27.83	22.70	21.56
H78-14(855-14)	31.40	29.83	—	—
560-15 #	24.60	23.37	19.45	18.48
C78-15(685-15)	25.80	24.51	—	—
F78-15(775-15)	27.95	26.55	21.45	20.38
G78-15(825-15)	29.80	28.31	22.80	21.66
H78-15(855-15)	31.25	29.69	—	—
600-16	—	—	18.90	17.95

Whitewall in most sizes at \$2.00 more. # Tread not as illustrated
* Whitewall: † Double-ply (4 ply rating) for compact car compatibility

Belt-O-Glass 4 + 2			2 + 2 Polyflex	
Whitewall Size	One Tire Price	2 or more each after discount*	One Tire Price	After discount for cash*
600-12	—	—	24.90	23.65
A78-13	31.30†	27.83	23.80	22.61
B78-13	—	—	25.45	24.18
B78-14	32.75†	29.21	—	—
C78-14	34.30†	30.68	26.30	24.98
D78-14	35.25†	31.59	—	—
E78-14	36.40	32.68	27.90	26.50
F78-14	38.75	34.91	29.95	28.45
G78-14	40.70	36.76	31.40	29.83
H78-14	41.60	37.62	33.60	31.92
C78-15	33.75†	30.16	—	—
F78-15	40.25	36.34	—	—
G78-15	40.90	36.95	32.40	30.78
H78-15	43.40	39.33	34.90	33.15
J78-15	46.75	42.51	—	—
L78-15	48.60	44.27	—	—

† 2 + 2 construction for compact car compatibility

Tire Gauge
166
Reg. \$2.19

Low-pressure type with 6 to 50-lb readings. Convenient, pen-style with handy pocket clip, dust cap. 09-5505.

Litter Basket
444
Special

Sup-R-Grip saddle sits securely over the hump. Features a litter basket, two cup holders and a tissue dispenser. Complete with 6 liner bags. In Gold, Blue, Green, Black or Oxblood. 37-0034X.

Wedge Cushion
199
Reg. \$2.79

Conforms to body shape for comfort—helps prevent back fatigue while driving. Foam-filled with soft, leather-look vinyl covering. Approximately 15 x 14" size. 33-1514.

A Sporty look for any car
Bucket-style Auto Cushion
799
Reg. \$8.99

Fully ventilated for cool comfort. Handy front pocket with elastic hold downs. Choose Black, Blue, Brown or Red color. 33-1436X.



STOUFFVILLE
360 Main St. West Phone 640-5800
OPEN MONDAY TO FRIDAY 9 a.m. to 9 p.m.