



(Artist's Concept)

### CONSTRUCTION - JUST STARTING

Introducing **STOUFFVILLE ESTATES**, a mini community located just 2 1/2 miles north of Stouffville Plaza, on the Bloomington Sideroad, just 1 mile east of Highway 48.

15 exclusive homes reflecting ageless design, exciting interiors and custom features included only in better built homes. Homes designed with today's lifestyle in mind. Homes that are built to last and to pass on to the next generation. Come and see these exciting plans today.

#### SOME CUSTOM FEATURES

- ★ All clay brick exterior
- ★ Block basement
- ★ Plaster interior walls
- ★ Solid cedar exterior doors
- ★ Copper wiring
- ★ Walkouts
- ★ Approx. 1/2 acre lots
- ★ Aluminum soffits
- ★ Choice of hardwood or broadloom
- ★ Double attached garage
- ★ Brick fireplace
- ★ Quality accessories

#### 5 PLANS TO CHOOSE FROM OR YOUR OWN PLAN

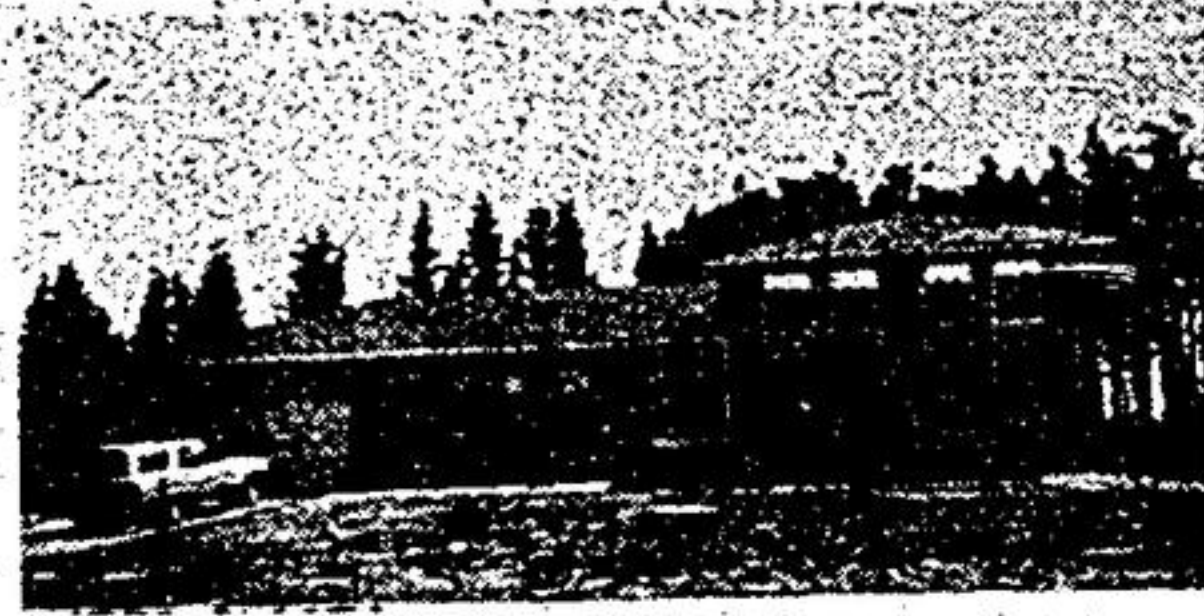
STARTING AT \$89,900.00 for 1700 sq. ft. home

- Price subject to increase OPTIONS ARE AVAILABLE  
ASK ABOUT OUR VERY REASONABLE CUSTOM BUILDING PRICES



#### CLOSE TO STOUFFVILLE

3 acres with custom built 5 bedroom sidesplit. Rec room with fireplace & walkout, den, broadloom, balcony. Only \$99,500. Call Ross.



#### 1/2 ACRE LOT

2200 sq. ft. 4 level sidesplit in Stouffville area, 4 bedrooms, 3 baths, fireplace, 3 walkouts, cedar deck, 2 patios. Must be seen. \$98,500.00. Call Lynda.

### STOUFFVILLE REAL ESTATE LTD., REALTOR

North-west Corner Hwys. 47 & 48  
EXCLUSIVE AGENTS - OPEN WEEK-ENDS

640-1200 or 297-3800



**HOWARD S. LEE**  
Real Estate Ltd. Member Broker

#### UXBRIDGE

Custom 2 storey on 11 acres just east of Stouffville. Spacious country kitchen with custom cupboards & walkout to huge cedar deck overlooking rolling countryside. Large master bedroom with walkout to upper deck & two other bedrooms; 4 pc. & 2 pc. baths. Fireplace in living room. Exterior trimmed with original bamboo and stucco. Perfect for estate or house set up. Asking \$119,000. Call Jarl Andresen, 297-2223 or 887-5156.

#### MARKHAM 19th AVE.

Century brick four bedroom two storey, located 4 miles north of Hwy. No. 7. House is an antique collector's dream with 8-inch pine floors throughout, three fireplaces all in pine, large kitchen with separate dining room, with finished family room. Must be seen to be appreciated, all this and large bank barn on 13 acres with over 700 ft. frontage. Call Mike Stacey, 297-2223.

#### CACHET COUNTRY CLUB

Fantastic is the only way to describe this property; you enter the hallway to an oak staircase landing to a 27 ft. living room, with fireplace. Separate majestic dining room with ceramic tiled floor, huge kitchen with all modern appliances, four bedrooms, master has ensuite, family room over 27', with stone fireplace, billiard room and sauna plus wine cellar, fully air conditioned, central vacuum, garage door electrically operated, many, many extras. Call Ossie Tancock.

#### STOUFFVILLE AREA

95 acres, 2 miles east of Stouffville, rolling and very scenic. Asking \$139,000. Call Ossie Tancock, 297-2223.

#### UXBRIDGE - 10 ACRES

Brick three bedroom bungalow on level land, ideal for horses, small farm, over 300' frontage. Large living room with fireplace. Separate dining room, country sized kitchen with double car garage, 200 amp service, beautifully paneled home. A real winner. Herb Bell.

#### MARKHAM - WHITCHURCH 1 ACRE

On paved road just north of Unionville, 246 x 332, will not be around long. Ossie Tancock.

#### MILLION DOLLAR VIEW

Just east of Ballantrae on paved road, 19 acres of high rolling land, building permit available. Asking \$79,900. Kay Mathes.

#### PROUDLY OFFERS



**OPEN HOUSE**  
Every Saturday & Sunday, May and June, 12 noon - 4 p.m.  
Call for Directions, 297-2223, 887-5156.

**PRESTIGIOUS COUNTRY HOME**  
Located Stouffville Area, 2 storey brick home on 10 acres, outstanding workmanship, four bedrooms, 3 baths, fully broadloomed, full unspoiled basement. Must be seen.

#### VANDORF

Newly renovated 3 bedroom farm house on 19 acres just east of Don Mills Road, spacious kitchen with breakfast nook, fireplace in living room plus full recreation room, has many extras including pond and party treed. Call Raymond Vallee.

#### MARKHAM - 10 ACRES

Located on 17 AVE. between 7th and 8th conc. with over 400' frontage, building permit available. Mike Stacey.

#### ONE OF A KIND - UXBRIDGE

Custom built three bedroom brick and aluminum home on 1 acre. Fully air conditioned, oversized rooms throughout with separate dining room plus kitchen with island, two baths, marble finish, brass fittings, family room on main floor with brick fireplace, log or coal burning, full basement. Set in country only a few yards off main paved road. Marlene Stacey 852-7727.

#### UNIONVILLE - ONE ACRE

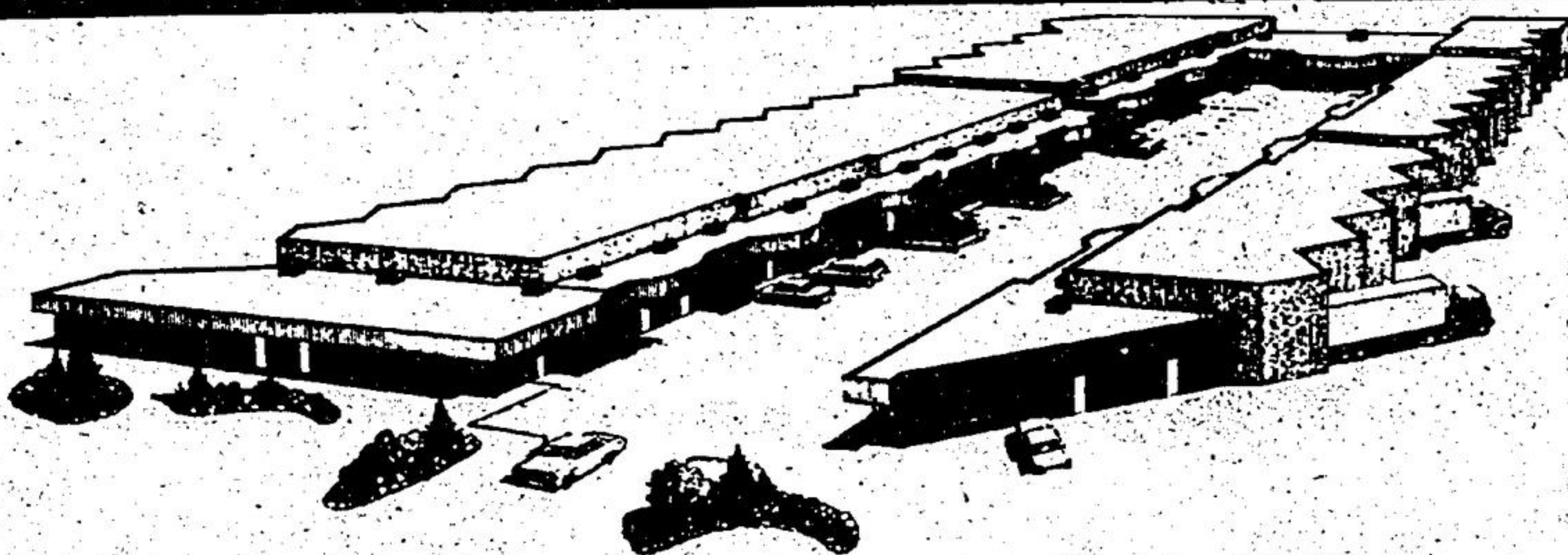
Highway 7 in Unionville with large frame bungalow, double car garage, possible future commercial, Bill Talbot.

297-2223

887-5156

852-7727

# FOR SALE INDUSTRIAL CONDOMINIUMS



McPherson Court Condominiums, Pickering

Registered No. 63

### PURCHASE YOUR OWN BUILDING UNIT

One of the most common themes you hear today is: 'I wish I had bought a building years ago.' As rents rise you hear it more and more. At McPherson Court Condominiums, we make it easy to own a quality building by keeping expenses down — through sharing. Landscaping, external lighting, outside maintenance, snow removal and lawn care are a joint venture that keeps the lid on cost. The building itself, there are low monthly payments to cover principle, interest and taxes. You control your own building without the problems that are usually associated with property management. These Condominiums offer you a pleasant environment, with flexibility of design and floor space from 800 to 2500 sq. ft. for office and warehouse/manufacturing facilities.

FOR COMPLETE INFORMATION CALL OR WRITE:

**JACK JACOBSEN**  
(416) 683-9200



"The house that JACK built"

**JACK JACOBSEN CONSTRUCTION LTD.**

Brock Road North Pickering Ontario L1V 2R1

Getting to McPherson Court from Downtown Toronto — take the Don Valley Parkway North to 401 East. Head East on the 401 to Pickering and exit at Brock Road South. McPherson Court will be on your left. One block south of Bayly Street.  
For further information call 639-7292 or 683-9200

