

MISSISSAUGA CLEARANCE

# \$995 DOWN

**MOVES YOU IN TODAY**

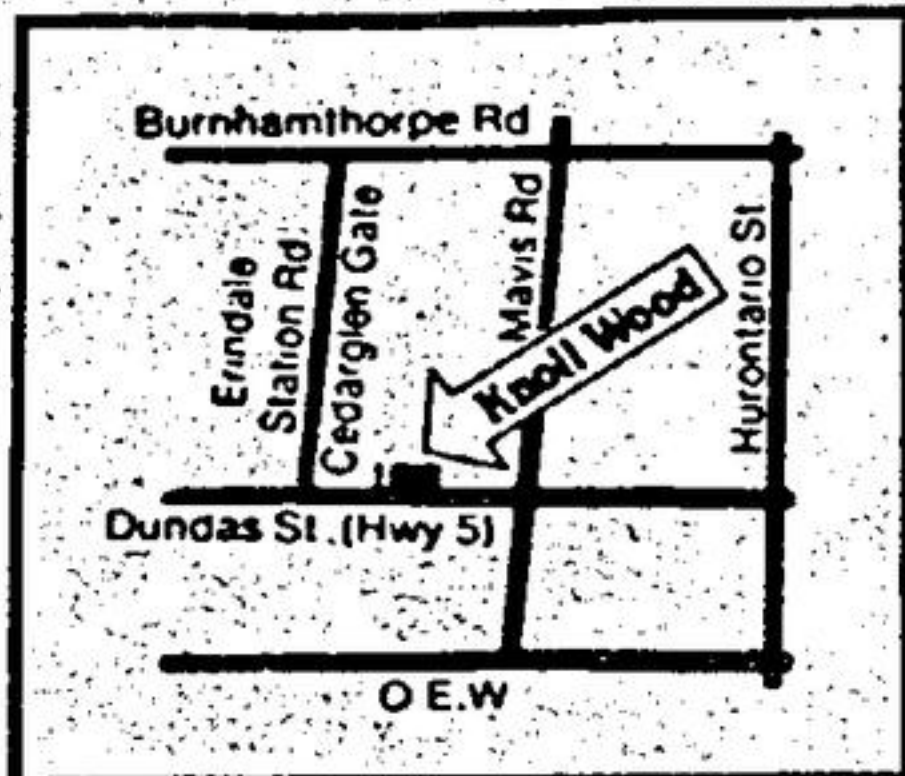
One of the lowest prices in Mississauga from \$51,500

**FEATURING**

3-bedroom homes & 3 bedrooms plus den, Broadloom, stove, fridge, washer, dryer incl. Garage (2-car parking). Swimming pool.



Follow Highway 5 (Dundas St. W.) 2 miles west of Highway 10 (Hurontario St.) to Cedarglen Gate.



**Knoll Wood Gardens**

The Cedarwood 4-bedroom townhome with garage

Now Registered. Phone 275-6510

Sales Office Open Weekends. 12 a.m. to 6 p.m. Weekdays. 1 p.m. to 8 p.m.

Revenue Properties Garfreed Construction joint venture. Prices, terms and conditions of sale are subject to change without notice.



275-6510

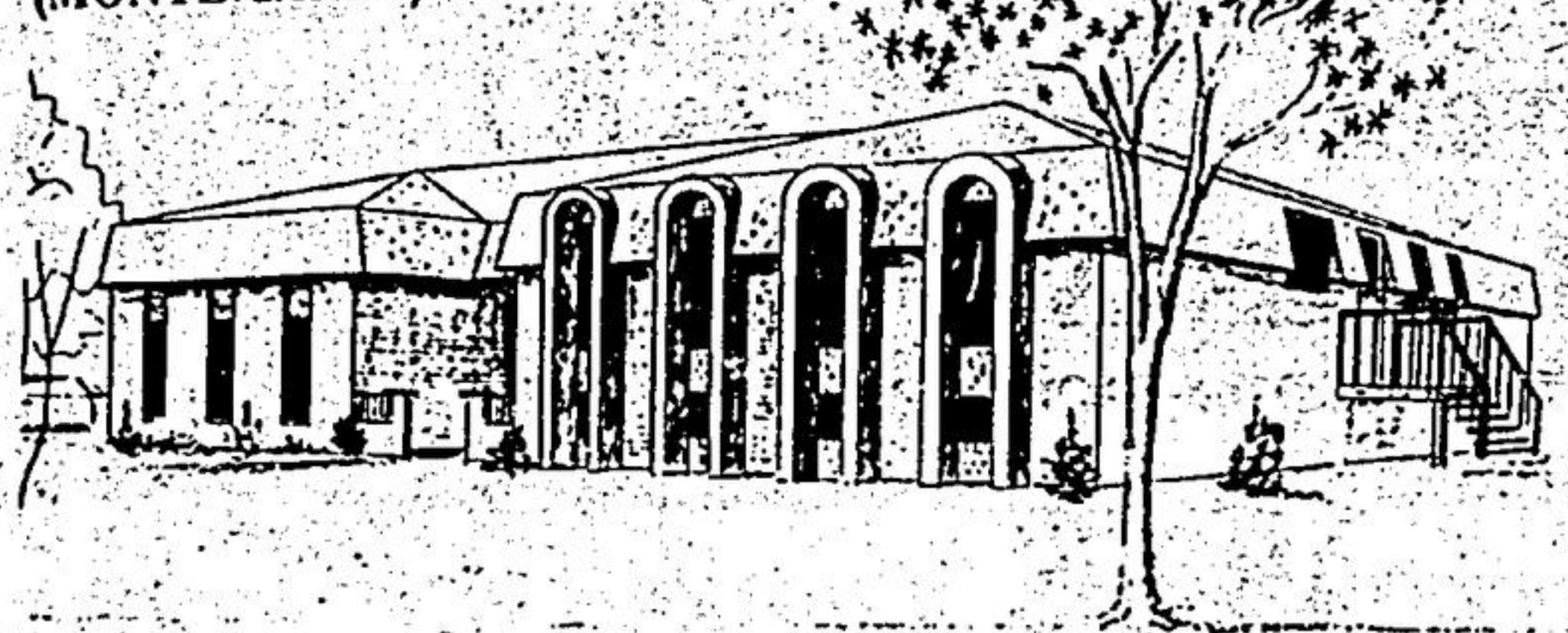
ANNUAL INCOME (FAMILY) OF \$17,500 OR BETTER TO QUALIFY

COME AND LOOK AT THE SUPER HOMES OFFERED FOR SALE ON HALF-ACRE LOTS IN THE NOBLETON HEIGHTS SUBDIVISION — — — NOBLETON, ONTARIO

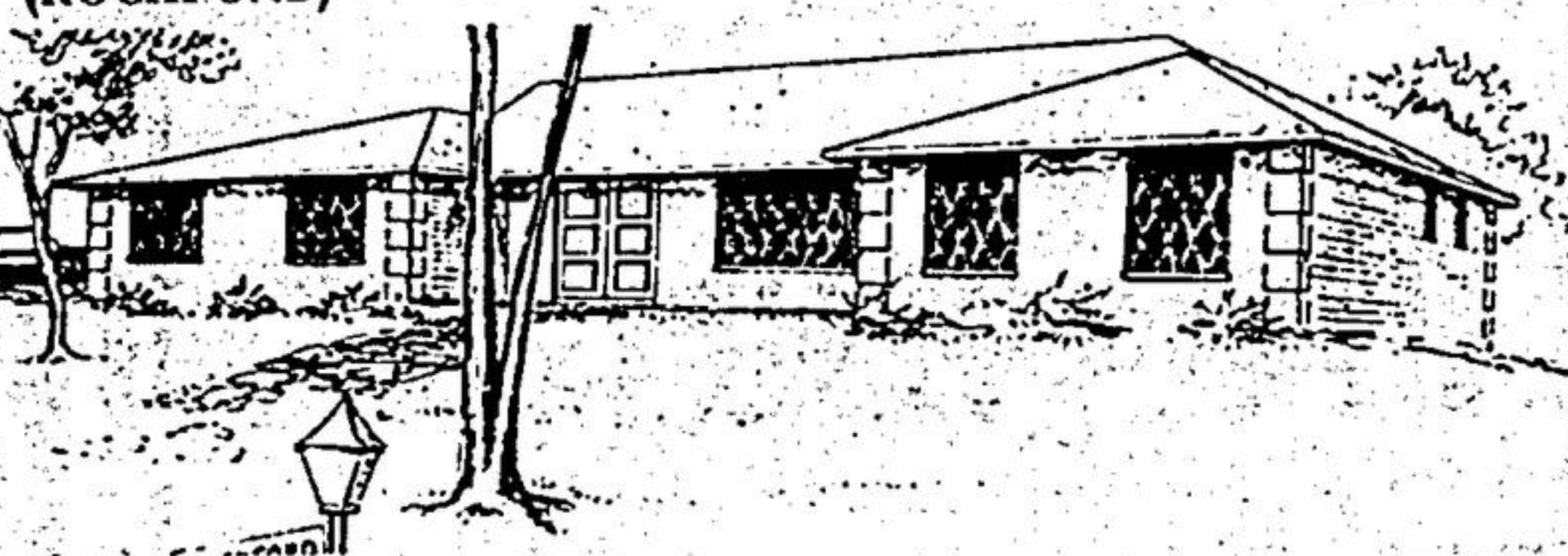
(ANNANDALE)



(MONTE CARLO)



(ROCKFORD)



**LOCATION — HWY. 27 & KING SIDE ROAD**

Just 15 Min. North of the 401 Representative on Duty 7 Days a Week

Call John Howlett Real Estate 663-2959 or 635-7993

HOMES BUILT BY THE GOLDCREST GROUP

# Neuchatel Place

beautiful detached homes situated on a quiet private crescent



MEADOWVALE MISSISSAUGA

25% ALREADY SOLD

Home Ownership Made Easier

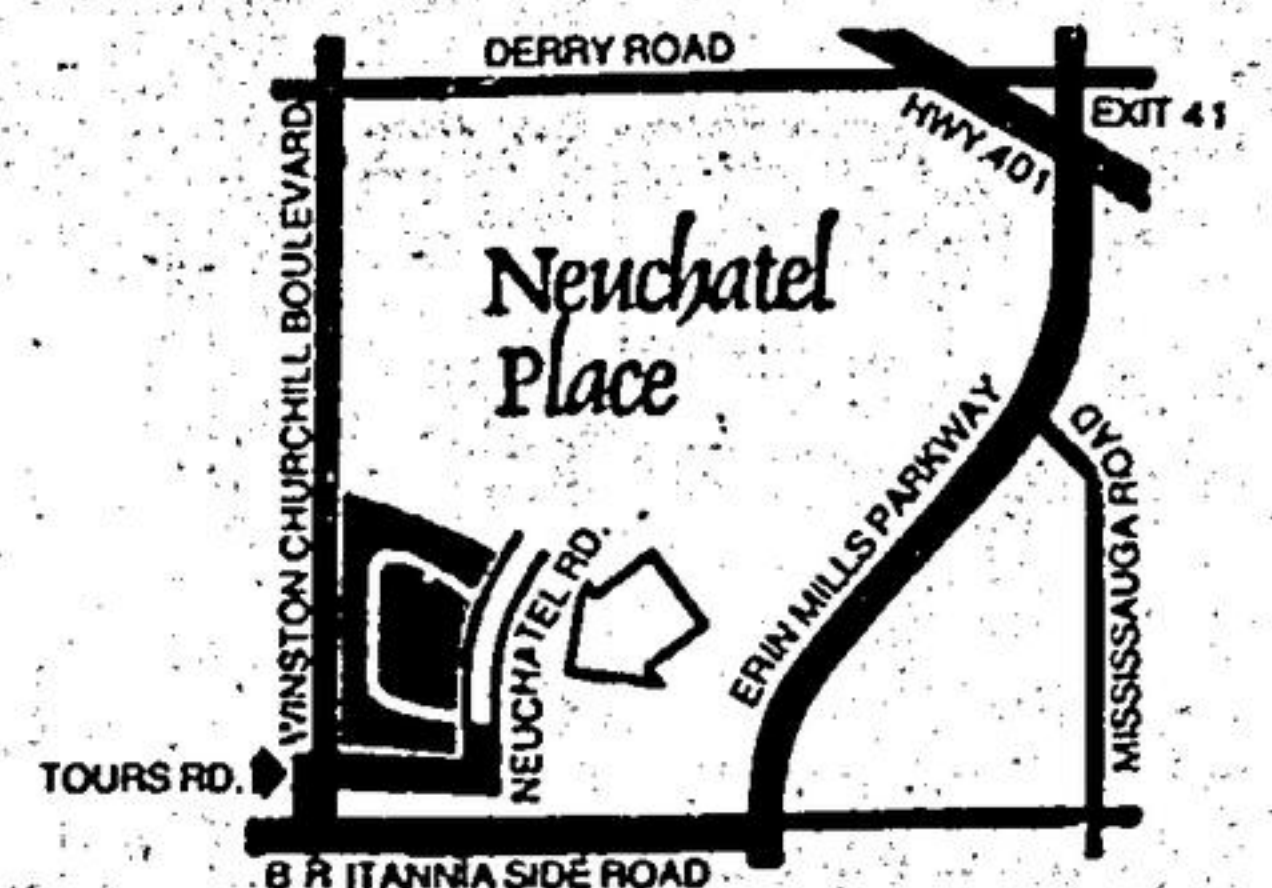
- A. Down Payment of \$3,350 can be tailored to needs of Purchaser.
- B. 2 years Deferred 2nd Mortgage.
- C. Carries for as low as \$479 monthly all expenses including Principle, Interest & Taxes (to qualified purchasers)

Priced from as low as \$66,9000

Many, Many, quality features you will like:

- Exciting spacious floor plan with separate living room and dining room
- Cosy fireplace in living room, finished fireplace in basement
- Beautifully styled eat-in kitchen, cabinets and vanities
- Broadloom throughout all areas other than tiled and basement areas
- Fully sodded front and rear yards • Light fixtures
- Quality ceramic tiles • Kitchen exhaust hood and fan
- Double stainless steel sink • Laundry tub in basement
- Clean, modern gas heating • Open stair steps in most models
- Vinyl tiles • Wooden sliding insul-glass doors to patio in all models
- Patio area finished in new interlocking patio stones
- Decorator mirrors in bath and powder room
- Quality double glazed windows
- 2 appliances
- Choose from 3 & 4 bedrooms
- Attached garage
- Close to all conveniences

Is Neuchatel Place For You? As Little As \$995. Down For A single Family Home.



NEUCHATEL PLACE IN MEADOWVALE MISSISSAUGA

PROBABLY THE BEST PLANNED COMMUNITY IN CANADA

PHONE — 826-4611

Take 401 to Mississauga Road South exit, to Ervin Mills Parkway, to Britannia Sideroad west to Winston Churchill Blvd., north to Tours Road. See signs.