

A HOME IN THE COUNTRY?

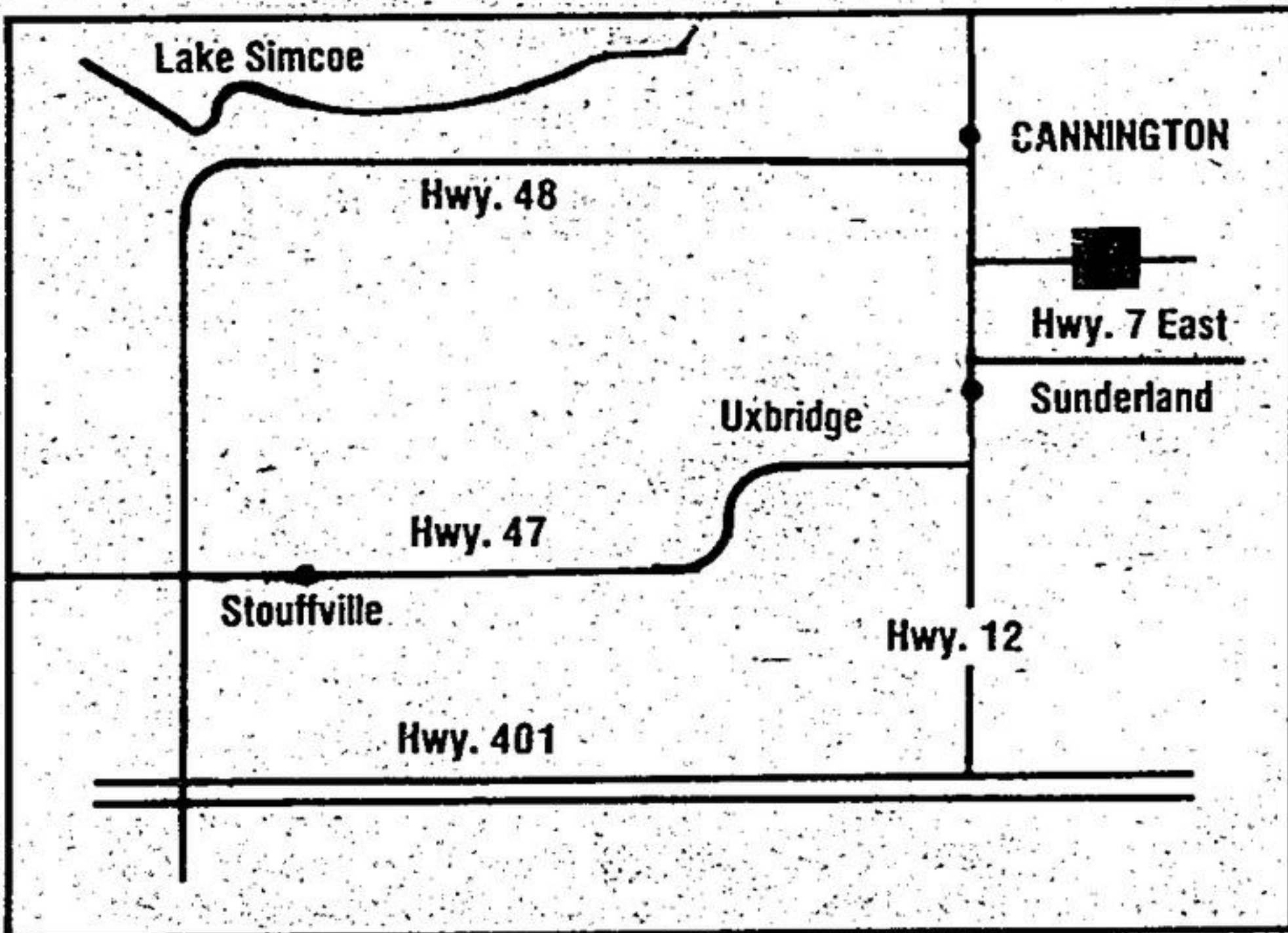
Enjoy that Country Village Atmosphere.

Architecturally Designed Homes. Superb sites with a view.

Professionally Landscaped Lots. Energy efficient Homes and all at an affordable Price!

CANNINGTON

Bordered by pastoral settings and the Beaver River, Beaver Ridge Estates combines suburban living with the neighbourly attitude of a small Ontario town and offers the best of both. Parks, public schools, shopping and businesses are a short walk from the doorstep — lakes and forests a mere country mile beyond.

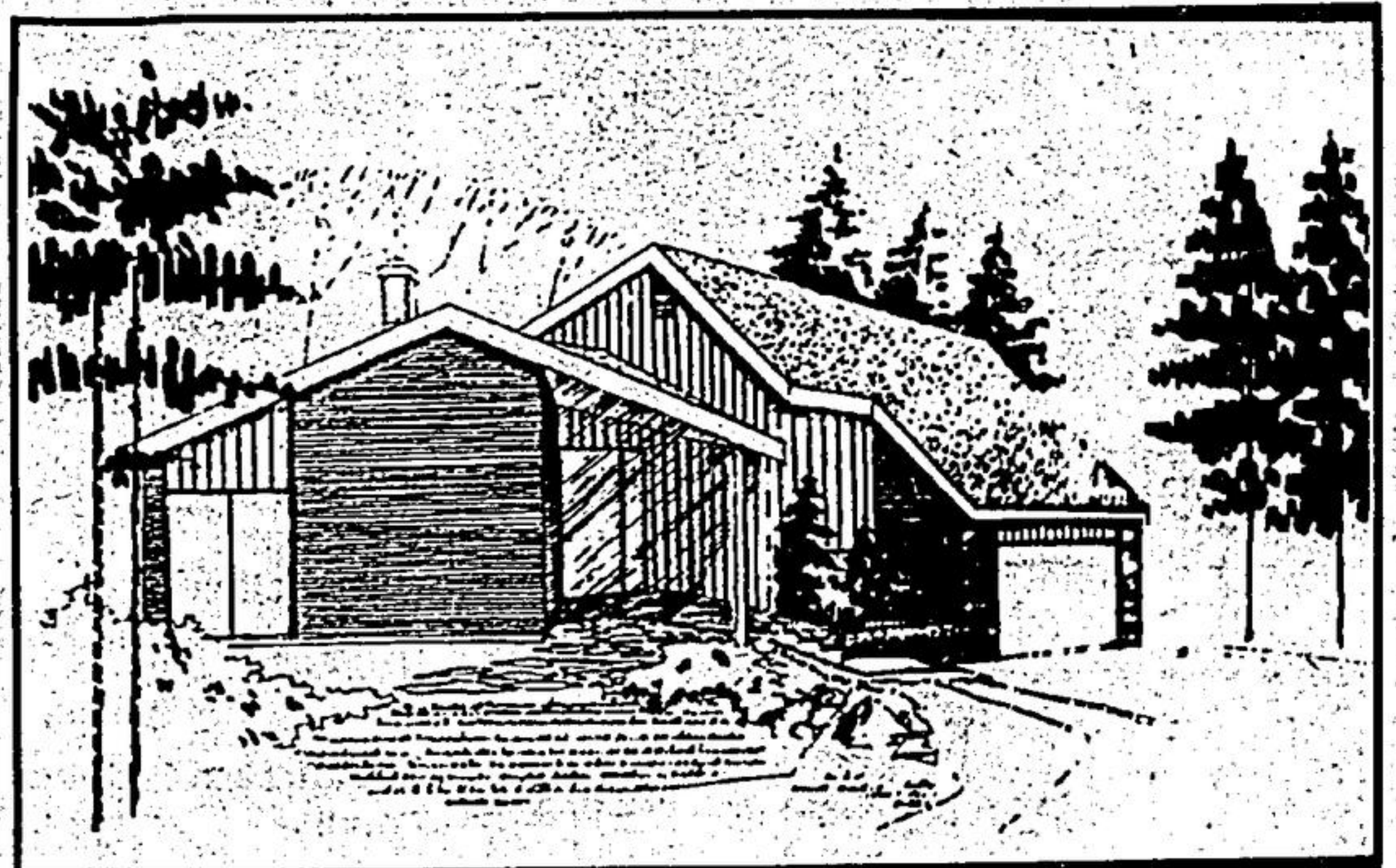
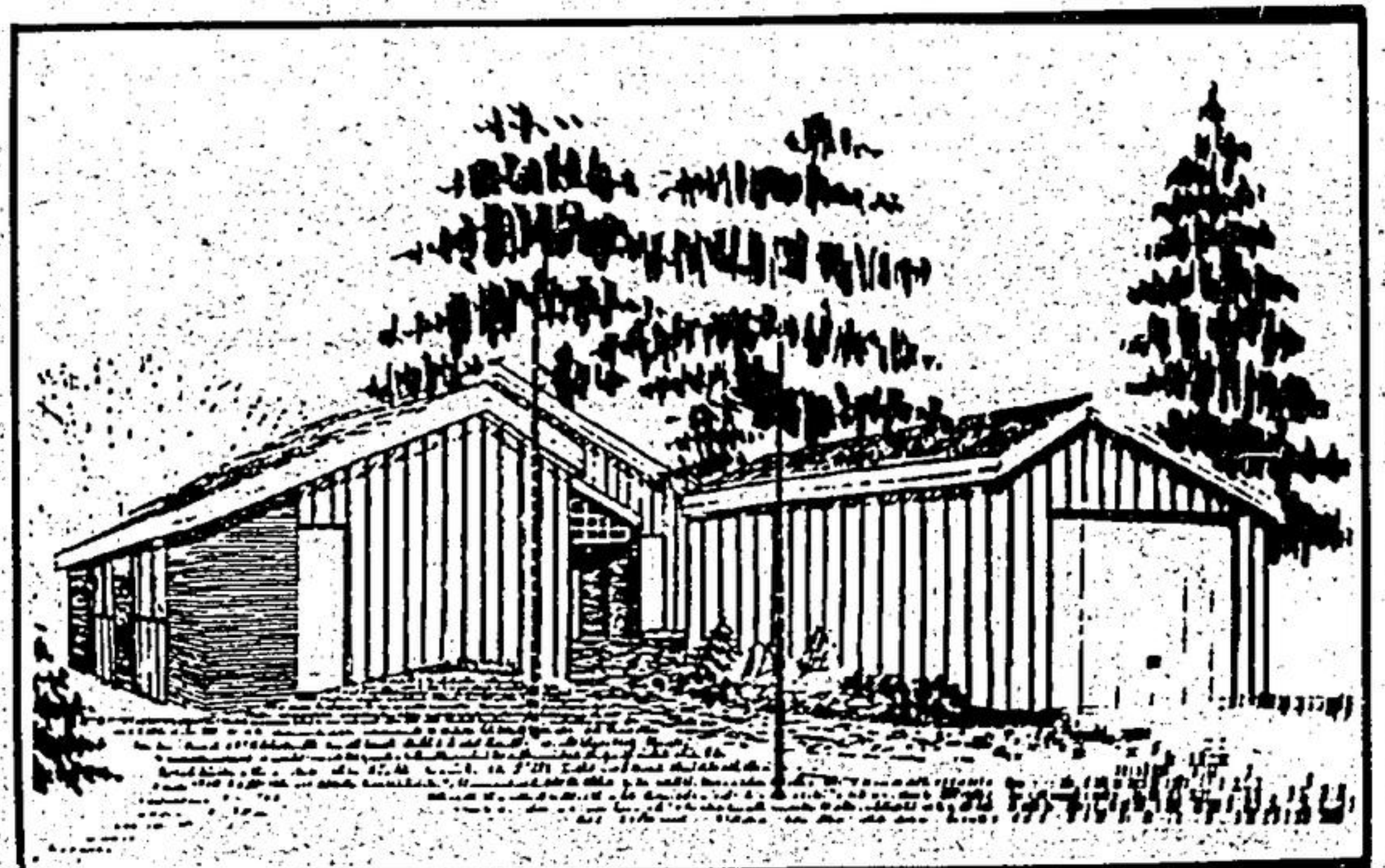
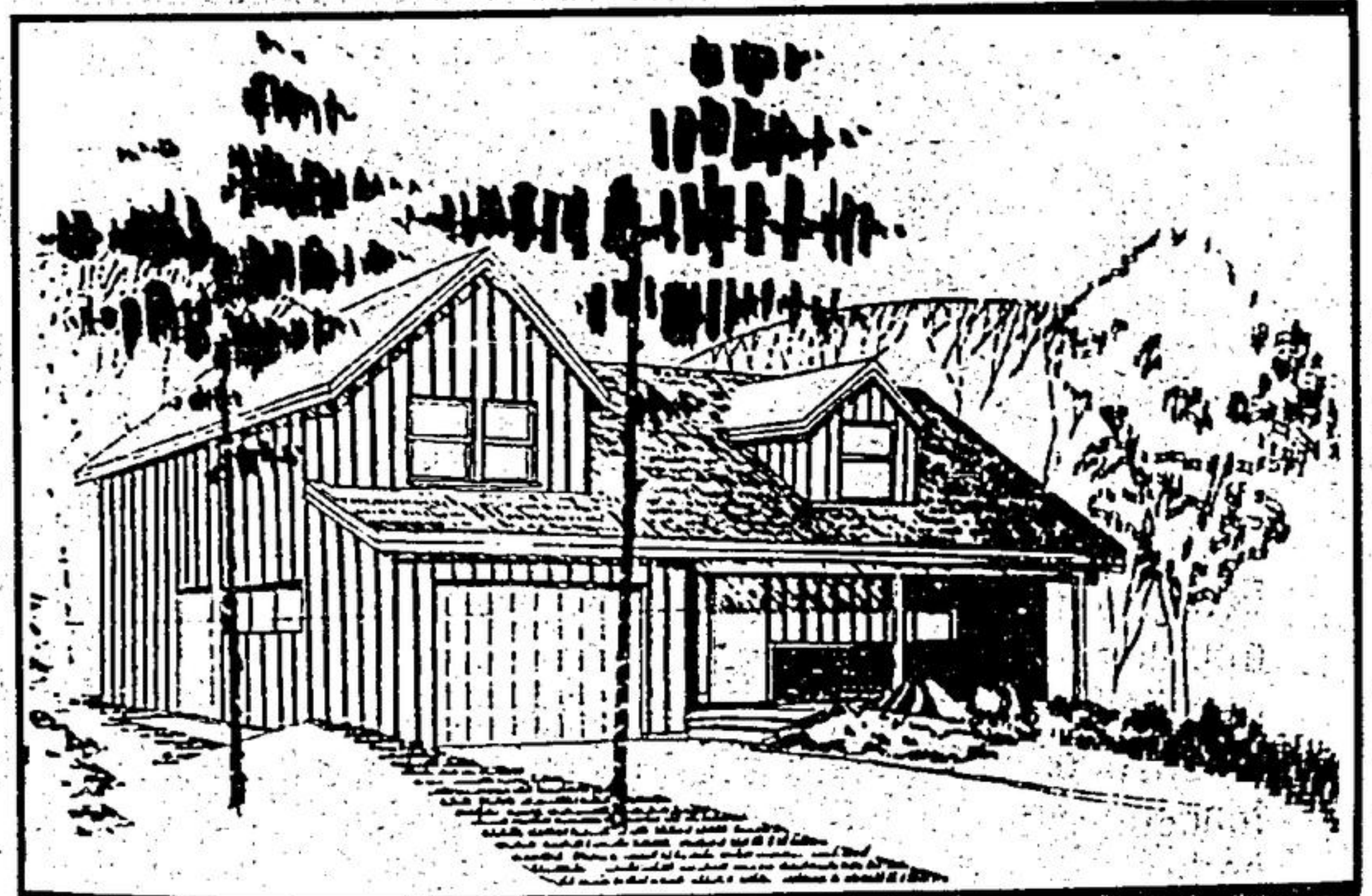


401 to Brock St., at Whitby. North on Hwy. 12 - 6 miles North of Sunderland to signs for Cannington. Follow signs for Beaver Ridge Estates.

**ATTENTION TO AN ARCHITECTURAL CONCEPT
 BUILT FOR ENERGY CONSERVATION.
 BUILT FOR DURABILITY.
 BUILT WITH LASTING FINISHES.
 LANDSCAPED FOR SENSITIVE SETTINGS
 BY GIVING CAREFUL ATTENTION TO LAND AND
 PLANT FORMS.**

Meet us on the Site
10 a.m. to 5 p.m.
over the Long Weekend

Prices from **\$54,900**



Beaver Ridge Estates
in the tradition of Cannington

Developed and Built by

EDWIN BARKEY CONSTRUCTION LIMITED

1-705-432-2229 FOR LOCAL INFORMATION CALL TED CADIEUX-840-2000