

New GO area services

With the advent of the new GO rail line to Richmond Hill, travel patterns will be changing and GO timetables will be changing in turn. Some of the schedule changes will be in response to the re-routings in association with the Richmond Hill GO Train service, and others will be as a result of recent evaluations of passenger travel patterns and load levels on existing routings.

General outlines of the major schedule and route changes are listed below. For more complete details, pick up a new timetable (available soon) from your nearest GO Station or your local ticket agency.

A new Monday-to-Friday service leaving Uxbridge at 6:35 a.m. and 7:15 a.m. operating via Clarendon and Brougham is scheduled to meet the GO Train in Pickering then continue via Highway 2 and Highway 401 to the Scarborough Town Centre and York Mills subway station, terminating at Yorkdale. In the evening, a reverse pattern will connect with trains at Pickering at 5:35 p.m. and 6:15 p.m.

The trips that since April 1 have operated from Clarendon through Markham to York Mills and Yorkdale will now originate and terminate at the 9th Line in Markham. Passengers from Clarendon and Brougham will be accommodated on the new Uxbridge - Pickering service. Stouffville train feed service

GO rail service to Richmond Hill has resulted in a near-complete revamping of the Stouffville service via Richmond Hill. The round trip bus service that formerly operated between Stouffville and Union Station via Richmond Hill will now terminate at Finch subway station and will operate as a train-feeder at Richmond Hill. Two trips will leave Stouffville at 6:20 a.m. and 7:00 a.m. and run via the Richmond Hill GO Station and Bayview Avenue to Finch, with a reverse pattern in the evening.

Low ridership has necessitated a revision in weekend and holiday service as well. Through buses to Toronto will leave Uxbridge at 9:55 a.m. (Sat. only), 3:45 p.m. and 8:00 p.m., operating via Stouffville, Markham, Scarborough Town Centre and Warden

subway station to the downtown bus terminal. The 2:15 p.m. trip from Uxbridge, Clarendon and Brougham will terminate at the Pickering GO Station and meet the 3:00 p.m. GO Train to Union Station. Northbound trips will leave Toronto at 8:00 a.m. (Sat. only), 12:15 p.m. and 6:00 p.m., and from Pickering at 2:55 p.m.

LAWN-BOY SPRING CHECK-UP SPECIAL!

THIS WEEK ONLY \$12.50

Factory authorized LAWN BOY service

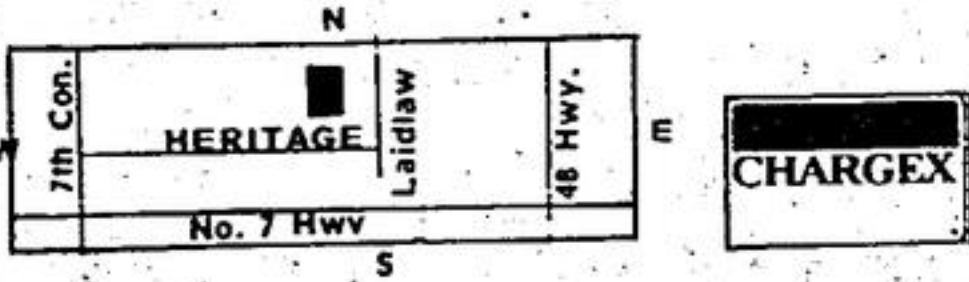


Make sure your LAWN-BOY is in top shape for the coming season. Let us give it a thorough check-up at this special early spring price. Here's what we do:

- Clean engine, housing, muffler, gas tank, exhaust ports and air filter
- Clean and adjust spark plug
- Check carburetor operation
- Test ignition system and switch
- Sharpen and balance blade
- Check compression and tighten all bolts
- Test run and inspect engine

SEE US TODAY
OTTO RICHTER & SONS EQUIPMENT

12 HERITAGE RD. Ste. 5
MARKHAM 294-1407



WITH US... SERVICE IS NO SIDELINE!

THE NEW MANAGEMENT OF **Fresta** HAIR DESIGN
83 MAIN STREET IS HAPPY TO ANNOUNCE 10% OFF TO ALL SENIOR CITIZENS
For Appointment Call 640-3933

SERVICE DIRECTORY

CALL 640-2100 OR 361-1680

CUSTOM PAINTING & PAPER HANGING
Top quality work only
EUROPEAN PROFESSIONALS
640-6088 (after 5:00 P.M.)

HANDYMAN
Complete household repairs, renovations, additions, fencing, painting, decorating, rec rooms, roofing, plumbing and electrical.
PROMPT EFFICIENT SERVICE
Free estimates
Call Ron or Cliff
640-5477 895-5238

TOROMARK FURNITURE REUPHOLSTERY

By Markham's Best - the price of a new suite. Workmanship guaranteed.



294-2581 297-2055

Landscaping Services Available
Plum Hollow Garden Centre
To serve you in supply and maintaining your green environment
PAUL CHESTER
Hwy. 47 Just North Of The Salesmen Stouffville, Ont.
Business No. 294-6554

HB CONTRACTING
A personal-professional company of European Craftsmen
Experts in residential, commercial, renovations and additions
Our specialty - Custom built homes.
A tight knit team of carpenters, cabinet makers and stone masons.
A select group of sub-trades who care like we do.
Architect or draughting services - we can recommend the right ones from experience.
For information call
Hans Bergert 640-3828 or Paul Peterell 649-5197

SMALL BUSINESS INCOME TAX SERVICE
- A year round service specializing in small businesses
- Should a small business incorporate? If you are incorporated are you getting your maximum tax deductions possible?
- Call STEVE DEACUR 640-3141

BARKER ROOFING and SIDING LTD.
Alcan Siding
REPAIRS - RE-ROOFING
EAVESTROUGHING
Free Estimates 640-4964

FOUR SEASON ALUMINUM SALES
Phone 294-5606
Alcan Building Products Authorized Dealer
WINDOWS DOORS
AWNINGS FASCIA
SOFFIT
EAVESTROUGH
INSULATION
AL GLENN
Stouffville, Ont.
655-4320 640-5824

ALSTACK SHOP
finest in saddlery
english & western
jewelry hats books
294-5148
R.R. 4, Stouffville, Ontario 640-2011

HOUSE TRAVEL LTD.
Ged Stonehouse
640-5491 294-6571
153 Main St. Stouffville

NORMAN MAY CONSTRUCTION
Additions
Rec. rooms, kitchens
Brick or stone
fireplaces.
655-4320 640-5824

ALUMINUM SIDING SPECIALISTS
STOUFFVILLE HOME IMPROVEMENTS LTD.
640-1891 FREE ESTIMATES 640-1891

COMTECH electric plumbing and heating ltd.
FORMERLY WATTS ELECTRIC
Electric Plumbing & Heating Contractors, Retail Electrical Supplies Appliance Sales and Service
106 Main St. North Markham 294-3642

PENNANEN ROOFING
INDUSTRIAL & RESIDENTIAL FLATS
Repairs to all types of roofs
Call Glenn 640-3926
STOUFFVILLE

Alcan Building Products Authorized Dealer
• WINDOWS • SOFFIT
• DOORS • FASCIA
• SIDING • TROUGH
AWNINGS

KING CITY PAVING LIMITED
Owned by Gallo Bros.
Industrial - Residential - Commercial
Members: Toronto Better Business Bureau & Consumer Protection Bureau
Head Office - Toronto 248-4242

BALLANTRAE CONTRACTING LTD.
• Additions • New Homes,
• Renovations • Barns Etc.
• Concrete Work
FOR ESTIMATES CALL ARCHIE PATERSON
640-4758

N. ROHWER CONSTRUCTION LTD.
General Building Contracting
Clarendon
649-2441

THE TACK BARN
Come & Compare
1 mile west of 48 Hwy. on Stouffville Road
640-4198

ADVERTISING DOESN'T COST - IT PAYS
640-2100 or 361-1680

STOUFFVILLE PRINTING & Office Supplies
11 Main St.
640-2612

WILSON'S Water Wells Ltd.
Pumps
Sales & Service
887-5337 after 6:00 p.m. TF33

THORNTREE DESIGN CONSULTANTS
Planning services for homes, offices, additions and renovations.
GAY ROBERTSON
157 Main St. W. Stouffville 640-1416

CUSTOM MADE WROUGHT IRON
Specializing in Railings Room Dividers Fire Screens Tools etc
Free Estimates
Bob Jensen 294-5066 or 292-8166

ED (BUSTER) NESBITT CONSTRUCTION
Custom homes Alterations - Barns, etc.
R.R. 2, Stouffville
Phone 640-1791

THIS SPACE FOR RENT
Phone 640-2100 or 361-1680

SUNBURST LANDSCAPING
Complete lawn & garden maintenance and supplies
Sodding - Planting - Designing
Contracts available
640-5431

UPHOLSTERY
The Finest of Craftsmanship and Materials
FURNITURE HAND STRIPPED AND REFINISHED
No Job Too Big or Too Small
We are darn good, darn fast and Darn Reasonable.
Free Estimates - Pick Up and Delivery
W. Hudson Ayres & Sons
Markham 294-0859

SOUTH LAKE ALUMINUM
Alcan Building Products Authorized Dealer
• Siding
• Trough
• Insulation
• Windows
• Soffit
• Doors
• Fascia
Free Estimates
Larry Yakeley 640-5909 R. R. No. 2 Stouffville

This Space For Rent
Phone 640-2100

JOHN HEATON "PAINTING"
High Quality Decorating
Fully Guaranteed
Completely Insured 640-4338 evenings
Free Estimates 640-5844 days

SILK SCREENING
YOUR DESIGN OR OURS
Available on T Shirts and Sweat Shirts etc.
CLUBS
GROUPS
TEAMS
INDIVIDUALS
Cedar's of Musselman's
STOUFFVILLE 640-2177

JERRY BREEN GENERAL CONTRACTOR
NEW HOMES ADDITIONS RENOVATIONS KITCHENS ESTIMATES
852-3516

HATHAWAY BROS.
PAINTING PAPER HANGING AIRLESS SPRAY
INTERIOR & EXTERIOR
COMMERCIAL INDUSTRIAL RESIDENTIAL
FREE ESTIMATES
115 MAIN ST. STOUFFVILLE 640-3075

Sauder Well Drilling Ltd.
Pumps Sales & Service
852-7264 TF35

ANTIQUES AND COLLECTIBLES

LARGEST SHOWROOM IN NORTH AMERICA

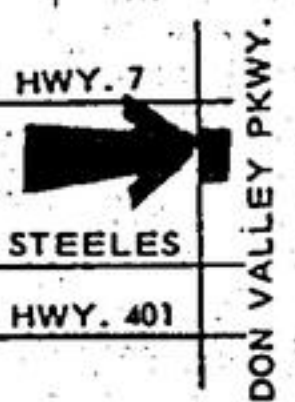
Largest antique and collectible permanent, indoor, showplace in North America, right here in the Toronto area, on the Don Valley Parkway - just 1/2 mile south of Highway No. 7. One hundred carefully selected dealers, each for his or her expertise in a different field of antiques and collectables.

(Grand Opening)

Sat. and Sun., May 6 and 7 and every Sat and Sun., year round. No admission charge, ample free parking. Because of our huge selection of antiques and collectables of every description, we probably have, in stock, just what you are looking for - or we will soon find it for you

FOR INFORMATION CALL

BILL AYERS 294-0859
H. WADDINGTON 294-9533
8241 WOODBINE, MARKHAM HALF MILE SOUTH OF No. 7 HWY. ON WOODBINE AVE. (DON VALLEY PARKWAY)



NO MORE!! WAXING YOUR CAR OR TRUCK AGAIN GUARANTEED



Spring's just around the corner and it's once more time to think of CAR CARE. Here's how to maintain that showroom finish on your car or truck - and without ever WAXING AGAIN!

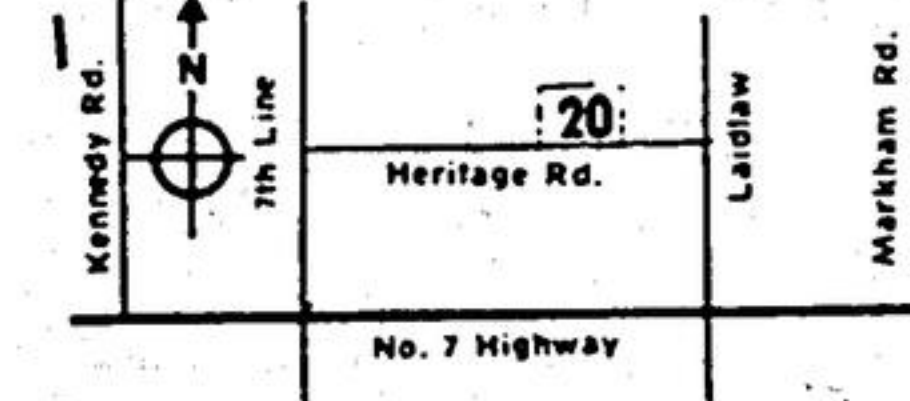
PERMA-SHINE

•• THE PERMANENT FINISH! ••
ADD YEARS TO THE LIFE OF YOUR CAR!

Spring SPECIAL
\$15.00 OFF
PERMA SHINE and PERMA GUARD
(COMBINED PACKAGE)

Call the Shine Line
294-6542

OPEN 8 A.M. - 6 P.M. Mon. to Sat.
20 Heritage Road. Unit No. 4 Markham



Heritage Rd. 20
No. 7 Highway
Kennedy Rd.
7th Line
Markham Rd.