

A HOME IN THE COUNTRY?

Enjoy that Country Village Atmosphere.

Architecturally Designed Homes. Superb sites with a view.

Professionally Landscaped Lots. Energy efficient Homes and all at an affordable Price!

CANNINGTON

Bordered by pastoral settings and the Beaver River, Beaver Ridge Estates combines suburban living with the neighbourly attitude of a small Ontario town and offers the best of both. Parks, public schools, shopping and businesses are a short walk from the doorstep — lakes and forests a mere country mile beyond.

CAREFUL ATTENTION TO LAND AND PLANT FORMS

- * Existing tree lines are reinforced with new planting.
- * Supplementary tree planting in shelter belts answer the functional requirements for protection from sun and wind.
- * The intrusion of automotive noise and lights is minimized by yet further planting and landscaping devices.

ATTENTION TO AN ARCHITECTURAL CONCEPT

Beaver Ridge Estates goes beyond a simple adherence to co-ordinated style and colours.

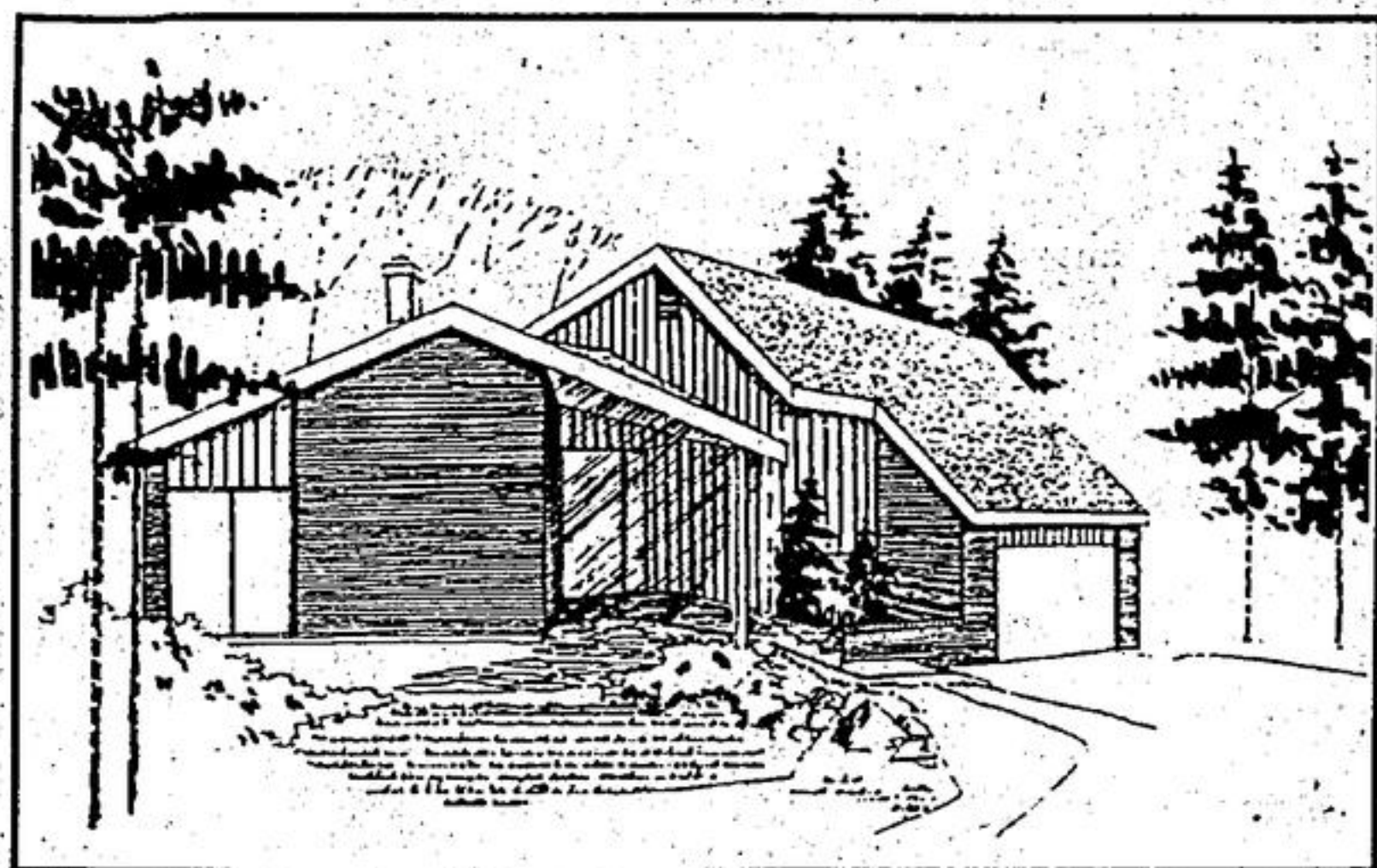
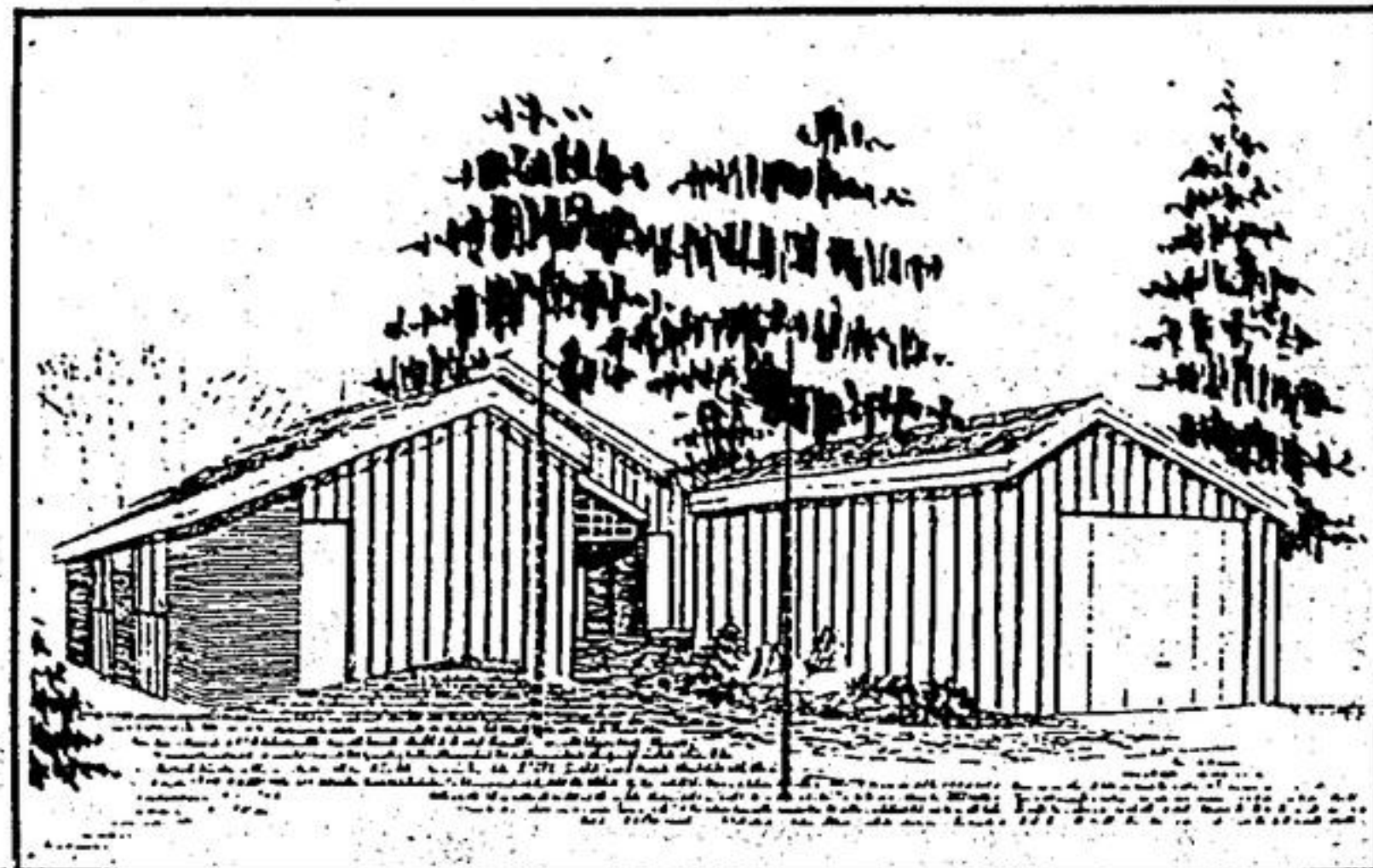
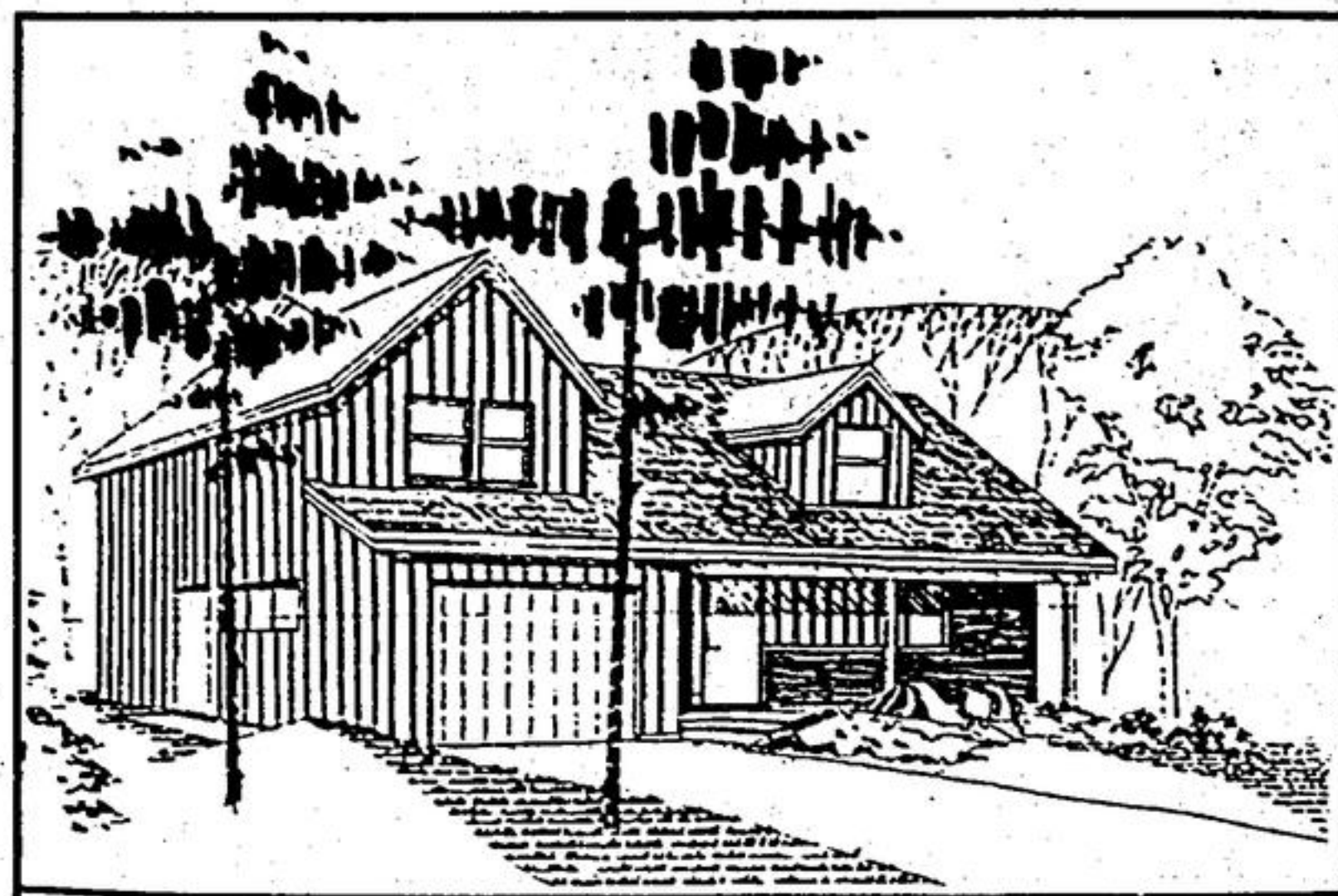
- * Buildings are turned to take advantage of views and sun exposure, and to increase the level of privacy.
- * Houses are staggered in their setback from the streetline to provide variety, and driveways paired to maximize the effect of landscaping.
- * Individual house plan designs are developed locating the kitchen to take advantage of morning and mid-day sun, and living spaces, afternoon sun.
- * Garages are located to create patio privacy areas.
- * Patio areas are provided in both front and rear yards to accommodate changes in sun exposure and climate.

BUILT FOR ENERGY CONSERVATION. BUILT FOR DURABILITY.

BUILT WITH LASTING FINISHES.

LANDSCAPED FOR SENSITIVE SETTINGS

We invite you to explore the desirability of living in Beaver Ridge Estates - a complement to both the community of Cannington and a distinctive life - style



Beaver Ridge Estates
in the tradition of Cannington

Developed and Built by

EDWIN BARKEY CONSTRUCTION LIMITED

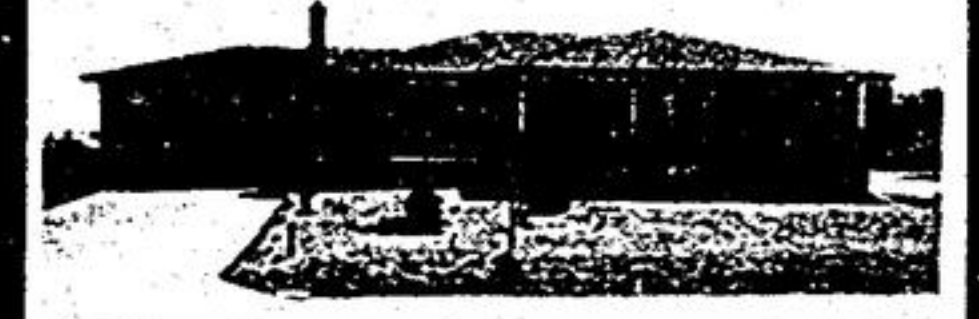
1-705-432-2229 FOR LOCAL INFORMATION CALL TED CADIEUX-640-2000

STOUFFVILLE REAL ESTATE LTD.
640-1200 297-3800



JUST LISTED - 1 1/2 storey home on large lot with mature trees. Huge new master bedroom with 3-pc. bath and new country kitchen. Heated 1 1/2 garage workshop for year round hobby. Backs onto golf course. Asking only \$63,900.00. Call Sal.

\$59,900.00 - Immediate possession, newly decorated 3 bdrm. detached bungalow in Aurora. Rec room with fireplace, den or 4th bdrm. Close to all conveniences. Must sell, make an offer. Call Vikki



BRICK HOME ON 1/2 ACRE - Immaculate 3 bdrm. home features living room with fireplace, separate dining room, large kitchen with dishwasher, 2 baths & gleaming hardwood floors. The rec room is too fabulous for words — come and see for yourself. Call Lynda.

MUST BE SOLD - Victorian brick home with main floor family room and new modern kitchen. Situated in quiet neighborhood on 150' deep lot. Must be seen. Asking \$69,900.00 Call Gayle.

2200 SQ. FT. SIDESPLIT ON 1/2 ACRE - This home has 9 spacious rooms including 3 baths, 3 walk-outs, cedar deck off kitchen, 30' family room with fireplace, 2 cold cellars, & upgraded broadloom. A dream home! Call Lynda.

STOUFFVILLE - Attractive 3 bdrm. backsplitted nestled in park-like setting. Walkout from living room to patio, eat-in kitchen with dishwasher, finished rec room & 2 garages. Asking \$67,900.00 Call Judy.

PLAN FOR SUMMER - Move now into your cozy 3 bdrm. sidesplit with heated inground pool. Features park-like landscaped lot, rec room. On a dead end street with open fields. Priced right at \$74,900.00. Call Sal.

SOMETHING DIFFERENT - New tri-level home waiting for your choice of colours. Features family room with fireplace & wainscotting, 4pc. master ensuite & double garage. See it today. Call Gayle.

STOUFFVILLE NORTH - \$36,900.00. Cozy 2 bdrm. home on treed lined lot, nicely decorated, broadloom. Ideal starter home. Call Vikki

INVESTMENT - 13 acres with 830' water frontage on Lake Simcoe. Zoned seasonal residential. Excellent property for cottage lots. Call Ross.

CLOSE TO STOUFFVILLE - Spacious 5 bdrm. custom built brick sidesplit, situated on 3 acres. Large modern kitchen, broadloomed living & dining room, walkout from master bdrm. onto balcony. Main floor den. Rec room with brick fireplace and walkout. Beautiful decor thru'out. Asking only \$99,500.00 Call Ross or Judy.

WE HAVE MANY OTHER PROPERTIES GIVE US A CALL
640-1200 or 297-3800

A great place to hang your hat

Willow Lane

A new community in Mt. Albert Opening May 1

5. Offices, Buildings
COMMERCIAL BUILDING for lease, Main St. Stouffville, \$650.00 per month. Store 1000 sq. ft. Upstairs 2 bedroom apartment. Full basement with 1 bedroom. Available July 1st. Phone 640-1841.

12. Room and Board
STUDENT employed in Stouffville requires board, July and August. 640-3773. 2W48

14. Wanted to Rent
SMALL APARTMENT, or room and board for one person - west end. 640-3904.

4. Lots for Sale, 4. Lots for Sale, Wanted

WANTED IMMEDIATELY

Small acreage or large lot either vacant or with small brick home. Private individual.

Call **888-1081**

14. Wanted to Rent
FLAT or apartment wanted in Stouffville, reliable senior man, phone 9 a.m. - 5 p.m. 640-1610 after 5 p.m. 640-5457. Ambrose Pullen.
A YOUNG Christian couple, employed in town, good references, looking to rent a small house in Stouffville or nearby. We will take good care of it and the grounds. Please contact Stojan Ninkovic, Box 366, Stouffville.

15. Coming Events
EUCHRE at Cedar Grove School. On Monday, May 1st, at 8:00 p.m., 2nd game of the series.

15. Coming Events
MARKHAM CLOTHING CENTRE - Nearly new sale Friday, April 28th, 1 - 3:30 p.m. at St. Andrews United Church, Markham. Bake tables, boutique, white elephants and toys. 3W47
SQUARE DANCE Sponsored by Melville choir, Friday, May 5th, 8:30 p.m. at Victoria Square, Marg Hough, caller. Refreshments. Everyone welcome. \$4.00 per couple 2W49
GIANT YARD SALE Saturday & Sunday, April 29th & 30th, 2 miles east of Stouffville 1 mile north of Altona on 2nd conc. of Uxbridge. Follow signs.

KINSMEN WHITE ELEPHANT SALE
May 13, 1978
Latham Hall, Stouffville
10 a.m.
Articles wanted For pickup call
640-4678 or 640-5501

6. Vacation Properties for Sale, Rent, Wanted

THE VACATION SPECIALISTS

\$19,900
A new, 3-bedroom lot and shell cottage, 85 miles east of Metro. Close access to Sand Beach and six acre private park with 1,400 feet of water frontage on the Trent System.
GEORGIAN BAY RETIREMENT
A two acre, estate lot with panoramic view of Georgian Bay and close to Collingwood Ski Hills Marina. Shopping and access to each. Only \$13,200.
LAKEFRONT
Near Huntsville, 100' lake frontage, sandy beach, nice trees, approximately 3/4 acre lot. Only \$15,500.
\$12,500 for this level, 2 acre lot, close to all Collingwood ski areas.
A well treed, lakefront lot, on a large lake east of Metro. Only \$9,800.
Brand new 3-bedroom, winterized cottage, on a large, clean lake near Dorset. Full price \$39,900.
A 3/4 acre lot and 2-bedroom cottage, 100' of lake frontage, only 100 miles north of Metro. \$32,500.
A 3-bedroom, 1 1/2-storey, shell cottage, 135' lake frontage, in Parry Sound area. Just \$29,900.
85 miles east of Metro, close access to Sand Beach, boat docking and 6 acre private park, town water and 1,400' of water frontage. Only \$8,700.

M.I.H. REALTY LIMITED
(416) 635-7082 - Call collect

15. Coming Events
STOUFFVILLE FIRE DEPARTMENT Annual Festival and Dance Stouffville Arena, Saturday, June 17. 2W47

15. Coming Events
GARAGE SALE Saturday, April 29, 11 a.m. Churchill Drive, South, Musselman's Lake. Antique gramophone, china cabinet, etc. 2W47

15. Coming Events

GARAGE & YARD SALE - Moving. Baby items, furniture, housewares, garden equipment 1/2 mile west of Hwy. 48 on Aurora Sideroad (Ballantrae) Saturday & Sunday, April 29th & 30th, 10:00 a.m. to 6:00 p.m. 640-5019

EUCHRE AND BRIDGE Thursday, May 11th, 8:00 p.m. Christ Church, Stouffville. 2W49

16. Births
CROWDER - Wally and Brenda are happy to announce the birth of their son, Adam Jordan, 6 lbs. 12 ozs. April 24, 1978 at Oshawa General Hospital. Little brother for Graham, Grandparents - Mr. and Mrs. Leslie Usher and Mr. and Mrs. Earl Crowder. Great grandmothers Mrs. Eda Beal and Mrs. Rose Crowder. Many thanks to Drs. Finch and Ross and maternity staff.

STOODLEY - Teri Lyn wishes to announce the arrival of her little brother Robert Timothy on April 17, 1978. Proud parents are Carol and Mac. Special thanks to Dr. Petrie.

18. Marriages
Robert & Betty James, Goodwood wish to announce the marriage of their daughter Sherril Lorraine, to John Gerald Noble, son of Gerald & Shirley Noble, also of Goodwood. Marriage to take place June 3, 1978 in the Goodwood Baptist Church.

19. Deaths
SCHMUCKER, Floyd - Suddenly on Monday, April 24, 1978 while visiting family in Markham, Floyd Schmucker of Calendar, Ont. in his 74th year. Beloved husband of Lillian Wright, loving father of John, David, Grace, (Mrs. M. Biehn), Dennis, Lil (Mrs. D. Grove), Robert, Kenneth, Alice (Mrs. J. Weitzel), and Doris (Mrs. E. Hurst). Beloved grandpa of 16 grandchildren. Resting at Dixon Garland Funeral Home, until 1:30 p.m. Thursday, then to Wideman Mennonite Church for service at 3 p.m. Interment Wideman Cemetery. "At rest with the Lord."

20. In Memoriam and Cards of Thanks
ATKINSON, Janet Leona - In loving memory of a dear wife, mother and grandmother who passed away April 30, 1977.
A page in the book of memory
Silently turns today,
We remember you in silence
And make no outward show,
And what it meant to lose you
No one will ever know,
Sadly missed by husband Walter, daughters Marion, Isabel and families.
Thank you to the Stouffville Fire Department for the promptness with which they answered our call on Monday, April 24.
Larry, MaryAnn and Brent Yakeley.

21. Articles for Sale
FOR SALE - small bank barn, 16 x 25 ft. sound roof and frame. \$200. also split cedar rails, any quantity. \$1.00 per rail. 683-1527 evenings. 2W49

21. Articles for Sale
2 USED round wood stoves, & 1 - 2 burner range with Coloroid elements. 640-3000.
SPRING SALE - Chain saws as low as \$99.95. Call 640-1814 11A9

21. Articles for Sale

PONTING'S Music Centre
Est. 1947
Don Mills Rd., 1/4 miles south of Davis Dr., Newmarket
895-6311

20% off from reg. prices (not inflated)

ALL NEW ORGANS-MUSIC-LAMPS-METRONOMES
until April 30
Drop out and take advantage
Open 9:30 a.m. - 9 p.m.

WOOD STOVES COMBI FIREPLACES
Long & controlled burning

TIDMAN'S FURNITURE LTD.
166 Sulton Rd NEWMARKET
Call for information 416 895 8700

610 BOB CAT 160 hours with bucket & post hole auger attachments, and 1 1/2 tandem trailer, will sell separately. 14' Crestliner Aluminum boat, 1 5/8hp chain saw 20" cut. 294-2467.

COMBINATION radio TV, and stereo, walnut finish, good condition. 640-4806.

3 AIR CONDITIONERS, 1 dehumidifier, 20" fan. 640-3904.

22. Articles Wanted
HIGHEST cash prices or trade value paid for used furniture and appliances. Brices Furniture, 478 4175.

20. In Memoriam and Cards of Thanks
CLARK - (Berale Gimley). In loving memory of a dear mother, who passed away April 28th, 1978.
Our hearts are like a memory book,
Its pages, Mother dear, hold all the loving thoughts of you.
Recorded year by year,
A book of golden yesterdays,
Bound with love and care.
A rare edition, Mother dear,
Because you're treasured there.
Memories are like threads of gold,
They never tarnish or grow old.
Sadly missed by daughter Joyce and son-in-law Bill.

21. Articles for Sale
SNOW BLOWER AND CHAIN SAW sale. Call 640-1814 TF27
PINE SHAVINGS Bulk and Bagged Call 433-0232 TF31

WHITE ELNA sewing machines, parts & service to all makes. Trade-ins accepted. 129 Main St. North, Markham. 294-6800. TF-4

SWIMMING POOLS - Leading swimming pool manufacturer must dispose of brand new 1978 models. Fully warranted, complete with pump, motor, filter, fencing, walkaround and deck. Suggested retail price \$2350. Available at pre-season special of \$1322. Call now for early installation. Long term financing available. Call toll free 1-800-268-1944. TF33

LUMBER FOR SALE
2 x 4 - 11 cents lin. ft.
2 x 6 - 17 cents lin. ft.
4 x 4 - 25 cents lin. ft.
This is a good grade of utility & economy spruce.
6 x 6 Rough Hemlock 69 cents lin. ft.
6 x 8 Rough Hemlock - 96 cents lin. ft.
PLUS TAXES Century Mill Industrial Lumber Ltd., 4 miles west of Stouffville on Gormley Road. 640-2351 TF19

SWIMMING POOLS TO RENT - Will lease and install for homeowners, family size aluminum swimming pools with patio. Choice of styles, meeting all fencing regulations on a one, two, or three year rental basis with option to own. Try before you buy! Call Toll Free 1-800-268-1944 TF33

PARTS & SERVICE
CARABELA Trail Bikes
POLARIS & RUPP Snowmobiles
SIMPLICITY-SNAPPER & HAHN Lawn Equipment
WALLS SALES & SERVICE Bethesda 888-1998 TF-47

TEAKWOOD FURNITURE SALE
791-2355
881-0000
EINAR CLAUSEN LTD.

USED railway ties for sale, good condition. 640-3165 or 640-2987 after 6:00 p.m. 2W49
TEAKWOOD & ROSEWOOD furniture, bedroom suite, 3 piece, dining room 9 piece, chesterfield suite, coffee, 2 end tables, wall unit, brand new, very reasonable. 1-241-6990. 11-35
1 DROP LEAF dinette set, suitable for 4. 640-5411.