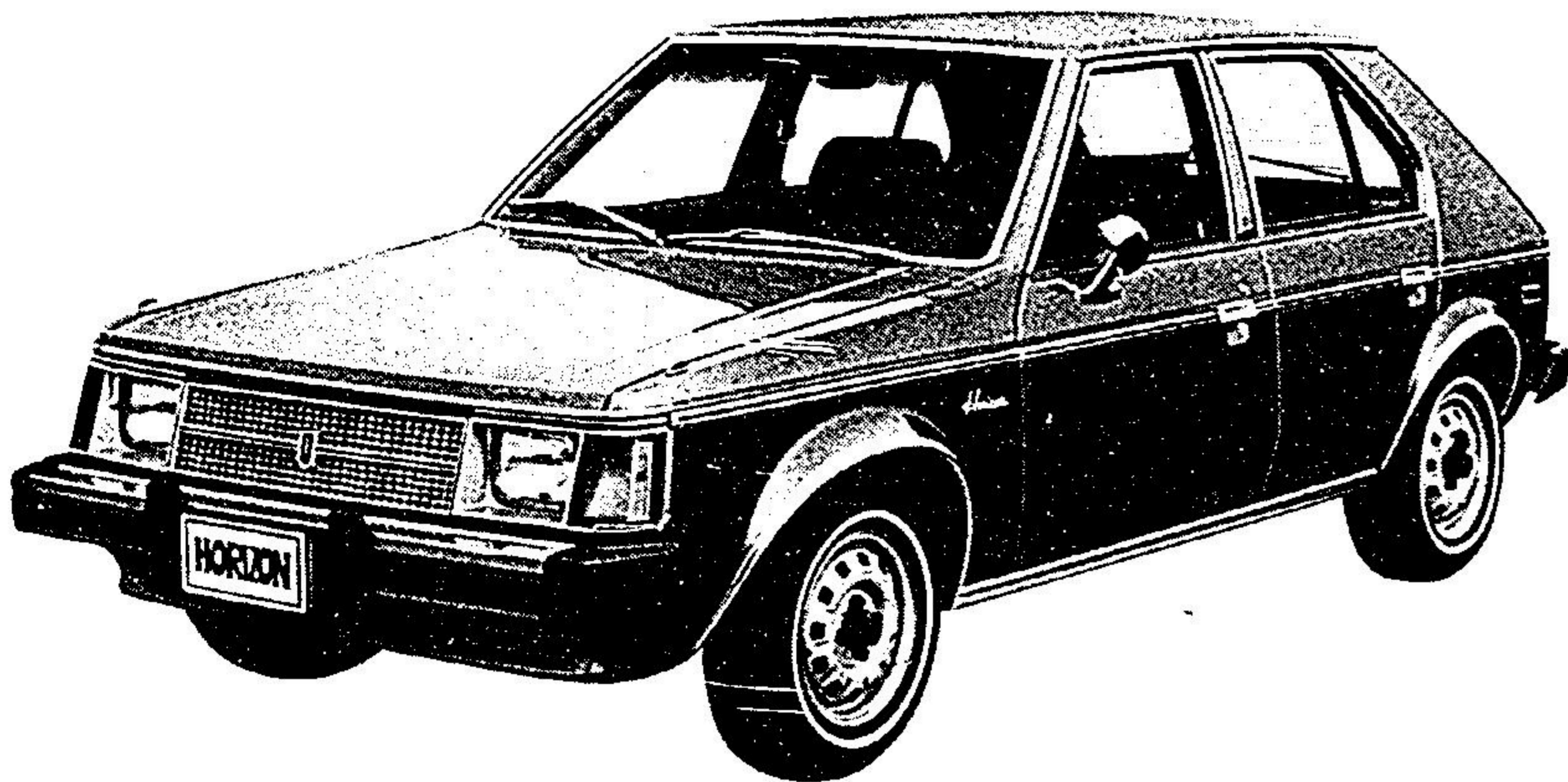
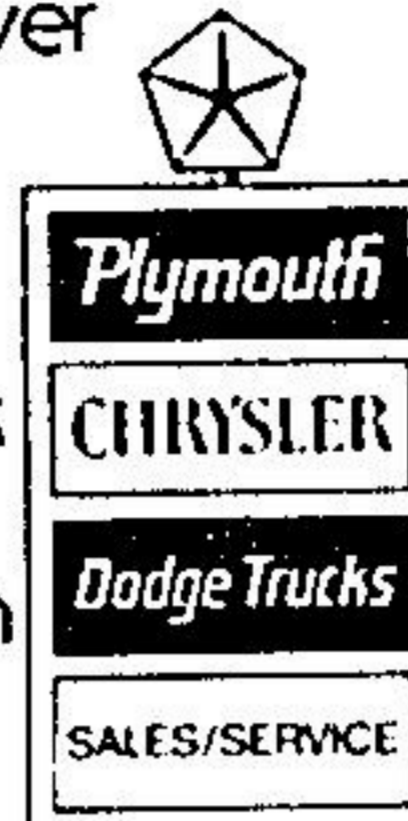


NEW PLYMOUTH HORIZON



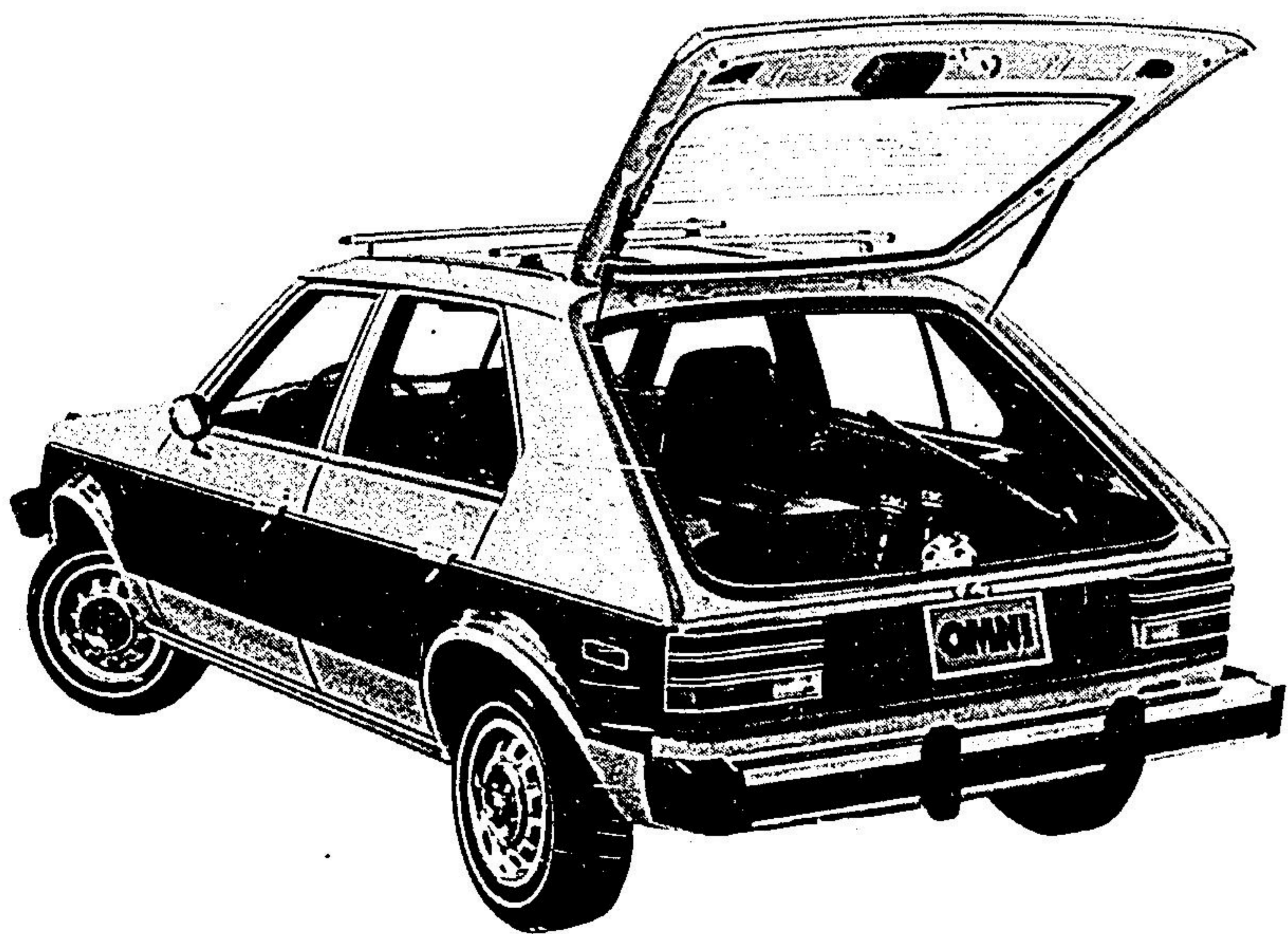
On the open highway, in a right turn, in the stop and go of city traffic—relax, Horizon can handle it. Front-wheel drive and iso-strut independent front suspension combined with Horizon's nimble 99.2" wheelbase produce superb handling wherever the driving situation.

A 1.7 litre engine, front disc brakes and the sure feel of rack and pinion steering make Plymouth Horizon one city car that's at home in the country.



BUY OR LEASE

TWO TO GO (WITH EVERYTHING)



NEW DODGE OMNI

Talk about interior roominess, easy access, great roadability, with plenty of zip—you're talking new Dodge Omni. The inside story on Omni is space and lots of it, whether you're driving full-up with four big adults or on the move with the rear seat down for extra cargo space.

Five big doors give easy access. Top it all off with a roof rack, just one of the many options designed to make new Dodge Omni just right for you.



BUY OR LEASE

MOTOR TREND MAGAZINE'S CARS OF THE YEAR.