

New real estate is officially opened

The new Farquharson Real Estate office on Main St. was officially opened last Saturday and Mayor Gord Ratcliff was there to welcome the new business.

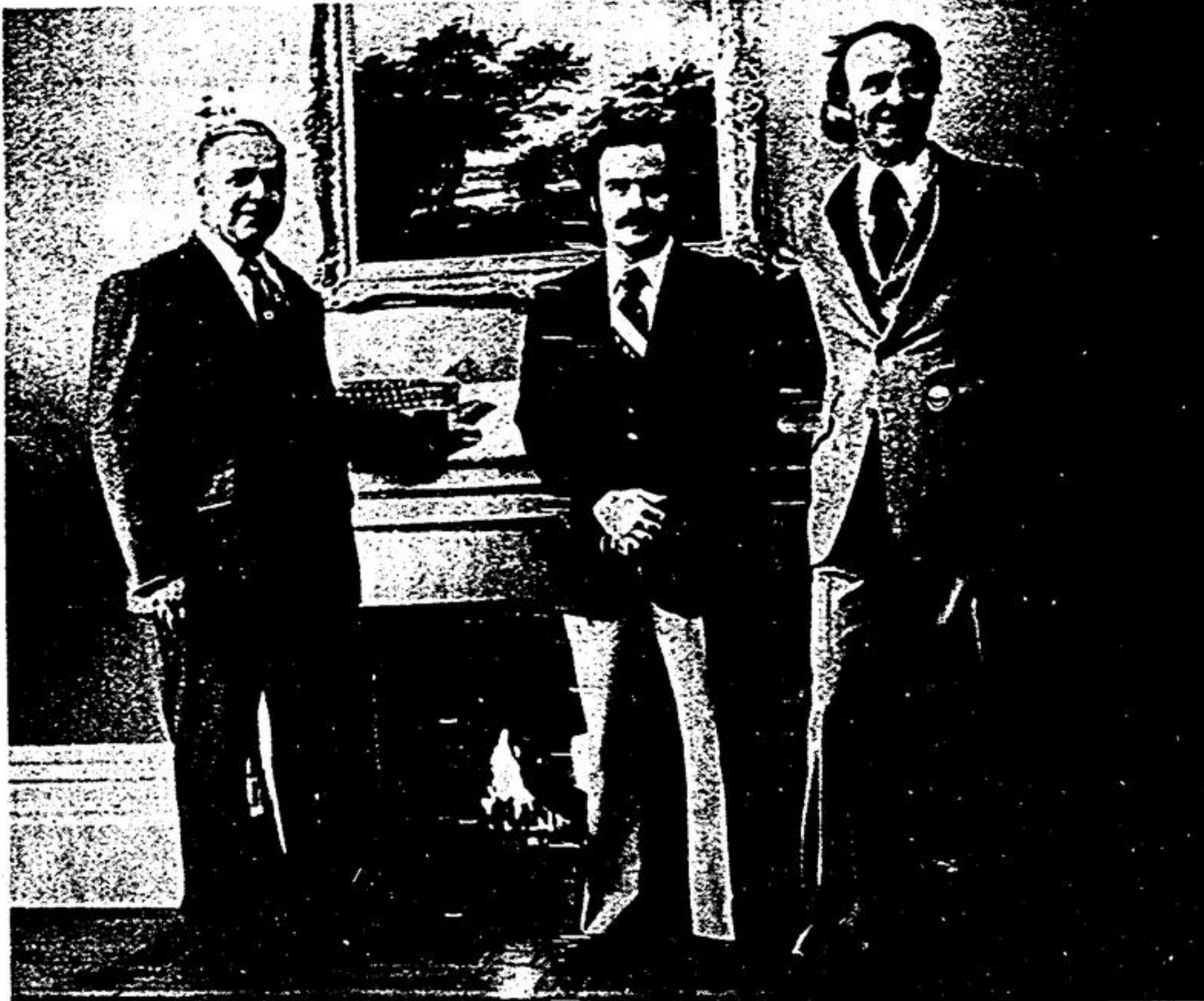
Tom Stephenson, office manager, opened the speeches by thanking everyone and commending his staff for the fine preparatory work

and he wished Farquharson Realty "every success in your real estate venture."

Longtime resident dies

The death occurred at Parkview Home on Nov. 26, of Mrs. A. H. Williams, the former Effie Cameron, and widow of Andrew H. Williams. The late Mr. Williams was well-known in the area as the manager of the former Eaton's Shadow Lake Camp, as well as manager of the Lions Swimming Pool. The couple had resided for many years on Rose Avenue.

Deceased is survived by a son Fred of Stouffville, and a daughter Mary (Mrs. D. F. McNinch) Toronto. There are also six grandchildren. A brother George and sister Mary (Mrs. T. Johnson) of Alberta.



The elegant new quarters of Farquharson Real Estate were much admired by the crowd that came to the firm's opening last Saturday. Mayor Gord Ratcliff, (who was on hand to cut the ribbon), Tom Stephenson and president J.M. Farquharson here gather around the fireplace in the reception area.

60. Auctions

AUCTION SALE
Herongate Country Auctions, every Wed. evening at 7:00 a.m. — located 4 miles North of Rouge Hill on the Altona Road, off No. 2 Highway (East Metro) or 4 miles East and South of Markham. Featuring every week: Good selection of antiques, fine furniture, glass, china, collectables, etc. So join us every Wed. and participate in one of Ontario's most authentic, old fashioned auctions, with no bids or reserves. The "True" Auction. Preview all day Wed. Consignment and estate selling our specialty. Kahn Auction Service — Ph. 294-0426 (Bus.) or 985-8161 (Res.)

AUCTION SALE

SATURDAY, NOV. 26 7 P.M. SHARP
Town Hall in Brougham (North Pickering) Brock Road and No. 7 Highway. Sale will consist of in part many new and used articles, furniture, TV's, antiques, dishes, china, wallpaper, car speakers, binoculars, clothing, and many other Christmas items too numerous to mention, snack bar will be open. Please attend and bring a friend. Norm Faulkner Auctioneer.

H. WILLIAMS & CO. LTD.

Jewellers and Pawn brokers. Auction sale of unredeemed pledges **THURSDAY** evening, Dec. 1st at 7:30 sharp at Victoria Square Hall, 3 1/2 miles north of Highway No. 7, 2 1/2 miles south of Gormley, Don Mills Road. Over 200 lots of unredeemed pledges under instructions of prominent Ontario Pawnbrokers. Wrist watches, ladies & gents, valuable diamond and stone rings, electric shavers, radios, numerous other articles. Every watch has a written guarantee. Free draw for ladies ring. Terms cash. Buy your Christmas boxes now. Alvin S. Farmer, auctioneer. Phone 887-5311.

WED., NOV. 30 1 P.M.

Holstein Auction Sale of Maryvyn Holsteins owned by Alvin Pegg, R.R. 1, Newmarket, Ont., 2, lot 14, East Cawillimbury, 3 miles north of Newmarket, 1 mile west and 1 mile north of Sharon or 1 mile north of North York Drive-In Theatre. All by unit sired, 25 milk cows, 5 heifers, due soon, balance open heifers and calves, Reg. (5 Grade) R.O.P. tested. This herd has a very high test mostly over 4 percent, several fresh cows. Maryvyn Gaiety Belinda (G.P.) 5 year 305 days, 20026 milk, 831 fat, 1.1 percent (174-193 B.A.) She is fresh again and milking heavily. Also DeLeval 3600 lb. bulk tank. Sale managed and sold by Lloyd Wilson Auctions Ltd. Uxbridge 416-852-3524.

ANTIQUE AUCTION SALE

Tuesday, November 29th AT 7 P.M.
At Victoria Square Community Hall (Woodbine at 18th Avenue) at 7 p.m. A large sale of quality items including ref. Ontario linen cupboard, raised panelled doors, hand-forged nails; pine harvest table, splayed legs; pine lift-top commode; early rosewood shelf clock; all original; pine hanging cupboard; the following furniture as found: arrowback rocker; 10' table; 10' bench; oak desk; pine armchair; 3 plankseat gunstock chairs; 3 bowback chairs; captain's chair; Boston and 2 other rockers; lamp table; cradle; ladderback; armchair; several small benches. Many items of woodenware including dash churn; sugar bucket; chopping block; oblong butter bowl; cutlery tray; wall box; clock shelves; wall telephone; pair of wooden shovels; pair of yokes; fancy frames; set of wooden carrier and lives print; "Our Pets, Fast Asleep"; framed watercolour of tulips; complete hanging lamp with brims — solid brass frame; shade has bluish ground with pink and blue peonies; min. brass oil lamp; numerous patterned lamps; blue flowered crock and Culp type jug (sl. dam.) and other crockery; Beaver bell; several early horse brasses; ornate cast iron pot stand and trivet; 2 iron pot stands and trivet; 2 "Star" pocket watches; "Star" pocket collection of glass sealer; bottles; Wriggley's Spearmint; apothecary bottles, etc. Crystal Wedding compote, sugar, and creamer; 1884 cakeplate; Nugget bowl; N.S. Grape and Vine open compote; interesting antique tin; duck decoys; N.Y. Central railroad lantern; child's state. Many items not listed, something for everyone. Preview from 4 p.m. Terms: cash or check with I.D. Not responsible for accidents. Henry Milbrer Auctioneer, Sutton West. 1-47

60. Auctions

SATURDAY, DECEMBER 10 AT 12 NOON FURNITURE -ANTIQUES -APPLIANCES
Auction sale including upright piano and bench, Frigidaire refrigerator (auto. defrost), Frigidaire 30" stove, RCA dryer (Like new), Hoover washer, spin dry, winger washer, small electrical appliances, Woods freezer 2 pc. dining room suite, bunk beds, Kroehler hide-a-bed and chair, vinyl chestfield and chair, 19" portable TV, kitchen set, 3 press back chairs, wicker fernery, wicker rocker, Aladdin lamp, 2 milk cans, trunk, fruit jars, parlour table, small chest of drawers, books, small tables, humidifier, Polaroid camera, record player, electric guitar with amplifier, Moped-1500 miles, power lawn mower, steel work bench, 3 speed bicycle, electric hedge clippers, aluminum step ladder, dishes, plus many other items. The property of PERCY YAKE in Goodwood on Conc. 3, immediately north of Goodwood School. Lunch available. Sale at 12 noon. Sale managed and sold by Lloyd Wilson Auctions Ltd., Uxbridge 416-852-3524.

AUCTION SALE

Wednesday, Nov. 30th AT 7 P.M.
At King City Community Centre. South off the King Road just east of Keele St. Lots opposite I.G.A. store. Sale includes: refinished pine flatback cupboard with glass door top; pine dough box, bake board, pill yoke, harness maker, bench vice, piano stool; Canadian rocker; Boston type rocker; extra large pressed back arm chair; raised head couch (old); colonial style extension table, 4 chairs, sectional chestfield, bedroom suite; child's rocking chair, clover leaf table, claw and ball feet; oil lamps; Crock; Avon bottle collection, quantity of china; glass silver, etc., including, Noritake, delft, depression glass Satsuma vases, oil paintings, old books, hooked rugs, fire long, 302 army rifle, camera, portable power saw and jigsaw etc. approx 250 items in all. Terms cash, cheques with I.D. only Gord Orr, Auctioneer. 1-47

THURSDAY, NOVEMBER 24

Auction sale of furniture and antiques to be held at Victoria Square Hall, 3 1/2 miles north of No. 7 Highway on the Don Mills Rd., the property of MRS. CHARLOTTE FARQUHARSON, OAK RIDGES and RON FREIL, Thornhill. Included will be chestfield, sofa, bedroom suite, sideboard, fireplace screen, no. chairs, dressers, spooled hall tree, 1890 stamp book and collection, rugs, bedding, old newspapers, magazines, pictures frames, dining suite, library chairs, Victorian chair, parlour set, beds, hall table, no. of antique dishes, oil lamp, silver tea service, electric snow blower, many other articles. No reserve. Terms cash. Sale at 6:30 p.m. Norm Faulkner, Earl Gauslin, auctioneers.

TOO LATE TO CLASSIFY

AVIATION COMPANY
Flight secretary receptionist for Buttonville airport office. Must be experienced and able to work in an unsupervised environment. Own transportation required. Interviews will be conducted via our Malton airport office. Call Mr. Shrewsbury-Gee 674-9030.
PROPANE STOVE with wood annex, car filter, electrical parts. Best offer. 640-1553.
EXPERIENCED girl over 18 for night shift full time. Regal Restaurant & Tavern. 640-4838.
REG'D. SIBERIAN HUSKY PUPPIES, 2 litters. Call 294-5574 evenings, after 8 or weekends.
FREE to good home — 2 small black dogs, one puppy, one 1 year old. Call 294-5574 evenings after 8 or weekends.

MPP feels airport will proceed

WHITBY — Durham West MPP George Ashe thinks the controversial Pickering Airport project will probably proceed after all.

Mr. Ashe visited Whitby council Monday night where he responded to questions including the future of the frozen airport property.

The federal government designated land in north Pickering for an international airport five years ago but the project was set aside apparently because Queen's Park refused to finance new roads and other hard services needed for the airport.

Mr. Ashe said the airport question will be answered when a complete southern Ontario transportation study is finished in March. But he noted that Malton International Airport's capacity will be reached by the mid 1990's and the federal government has promised Toronto that Malton will not be expanded. "It would seem to indicate in my view that Pickering or another airport project will proceed," Ashe said. Then he said it's highly unlikely the government would start looking for a new site when it has fought so hard to control. The government's "frozen zone" extends into Whitby, councillor Tom Edwards remarked. He and other councillors want to learn of the

airport project's future because it will affect town planning. New industry and jobs associated with such a project were also mentioned Monday. "The Pickering Airport was one of the pros of regional government," said councillor Bob Carson. He said since the project was canned the foreseen industry and housing has failed to materialize. "We must have more industry for the industrial

(tax) base we need so badly," Carson said. Ashe suggested that new housing has proceeded in Durham West regardless of the airport and industrial growth has been reasonably good "compared with other areas." He said the airport issue has grown out of true proportion in terms of its value as a catalyst for industry. As he said the airport would help but we shouldn't rely on it for industrial growth.

ARMOUR REAL ESTATE INC.
70 MAIN ST. N. MARKHAM

DON'T BE SHY!
I can introduce you to a beautiful home in Stouffville for only \$69,900. This four bedroom brick backsplit is located on a quiet street and is close to shops. A large family room with fireplace, a workshop, and games room are just a few vital statistics. Telephone now Barbara Newman 297-2533 or 294-5817.

YORK-PEEL (FEDERAL) LIBERAL ASSOCIATION

GENERAL MEETING

THURSDAY, DECEMBER 1, 1977 8:00 P.M.

ALBION — BOLTON COMMUNITY CENTRE — HIGHWAY 50, BOLTON

TO

- ELECT DELEGATES FOR NATIONAL BIENNIAL CONVENTION IN OTTAWA, FEBRUARY, 1978.
- POLICY FORUM — DISCUSS & CREATE POLICY

GUEST THE HONOURABLE DR. FRANK PHILBROOK, M.P., HALTON

Drive a better bargain with a Credit Union loan!

Stouffville District Credit Union Limited
96 Main Street West, Stouffville, Ontario 640-2811 - 640-4822

THE HAIRWORKS

MEN'S HAIR STYLIST

STOUFFVILLE PLAZA

NOW OPEN ON MONDAYS

BEGINNING NOV. 28th

Multi-car crash kills Mt. Albert man

A Mount Albert man was killed, a second man was hospitalized, and extensive damage was caused in multiple car pile-up on Highway 48 near Mount Albert late Friday afternoon.

OPP Constable Robinson said the accident occurred when a southbound car driven by Fraser Tramer, 24 of Cedar Valley collided with a northbound car driven by Mary Elizabeth Nigh of Pefferlaw, continued on down the road and struck a northbound car driven by Robert A. Dell of Mount Albert, then

crashed into another driven by Richard E. Malinowski, 32, of Mount Albert. Mr. Malinowski was dead at the scene. A second accident occurred as a car driven by Leslie Ptasiniski of Ballantrae approached the first tangle, and was struck from the rear by a vehicle driven by Bertram Evans of R.R.2, Stouffville.

Couple's mothers die

Mrs. Philmore Hamilton, the former Merle Richmond, and mother of Mr. Belfrey Hamilton of Stouffville, passed away on Nov. 19, at Parkview Nursing Home. She was in her 86th year. Mr. Hamilton's mother-in-law, Mrs. Stouffer, also passed

away at Parkview Home only a few days previously. There also survived a son Howard of Barrie, a brother George Richardson of Simcoe, and two sisters Mrs. Lillian Cleland and Mrs. Eunice Park, both of Listowel. There are seven grandchildren and five great grandchildren.

Mr. Ptasiniski was admitted to York County Hospital with injuries, and Mr. Evans was treated and released. Mr. Tramer also received bruises. Mr. Tramer has been charged with criminal negligence causing death, and Mr. Evans has been charged with careless driving.

The Stouffville Centennial Committee

New Year's Eve Dance

Saturday, December 31, 1977
9:00 p.m. to 1:00 a.m.

Rolling Hills Golf and Country Club

\$20.00 per couple Buffet Dress Optional

LICENSED UNDER THE L.L.B.O.

ORGAN SALE

SAVE ON A NEW YAMAHA

HOME OR APARTMENT-STYLE COMPARE THESE FEATURES

Model B2R as illustrated **AT ONLY \$795.**

Features:

- 2 Keyboards — 74 playing keys
- 13 Pedal notes
- 5 different organ sounds
- 5 automatic rhythms
- Headphone jack (for silent practice)
- Tape Recorder plug-in
- Beautiful walnut finish
- Matching bench included

2 LOCATIONS

TORONTO ORGAN CENTRES

PIANOS TOO!

1110 Finch Avenue West 661-2060 (W. of Dufferin)

Sherway Gardens 621-1871 (Opposite McDonalds)

OPEN EVENINGS

Bank Terms Christmas Layaway Plan

A Lasting Gift

A SUBSCRIPTION TO The Tribune

Greetings

We take pleasure in extending to you the compliments of the season and advising that we have entered your name for a year's subscription to The Tribune. a gift from

The Tribune
Stouffville, Ontario

.....Cut Along Line.....

Please Send A Copy Of The Tribune Each Week For One Year TO..... ADDRESS..... FROM.....

Please mail your **THE TRIBUNE** 54 Main St., Stouffville 640-2100 361-1680